

STATE OF NEW MEXICO
ENERGY AND MINERALS DEPARTMENT

OIL CONSERVATION DIVISION

P. O. BOX 2088

SANTA FE, NEW MEXICO 87501

Form C-101
Revised 10-1-78

NO. OF COPIES RECEIVED	
DISTRIBUTION	
SANTA FE	
FILE	
U.S.G.S.	
LAND OFFICE	
OPERATOR	

5A. Indicate Type of Lease
STATE ☒ FEE ☐

5. State Oil & Gas Lease No.
B-9311

APPLICATION FOR PERMIT TO DRILL, DEEPEN, OR PLUG BACK

1a. Type of Work

b. Type of Well DRILL ☒ DEEPEN ☐ PLUG BACK ☐
OIL WELL ☒ GAS WELL ☐ OTHER ☐ SINGLE ZONE ☒ MULTIPLE ZONE ☐

2. Name of Operator

Sirgo-Collier, Inc.

3. Address of Operator

P. O. Box 3531, Midland, Texas 79702

4. Location of Well

UNIT LETTER E L LOCATED 2630 FEET FROM THE South LINE

AND 970 910 FEET FROM THE West LINE OF SEC. 32 TWP. 24-S RGE. 38-E NMPM

7. Unit Agreement Name
West Dollarhide
Queen Sand Unit

8. Farm or Lease Name

9. Well No.

95

10. Field and Pool, or Wildcat
Dollarhide Queen

12. County

Lea

19. Proposed Depth

3900'

19A. Formation

Queen

20. Rotary or C.T.

Rotary

21. Elevations (Show whether DF, RT, etc.)

GL

KB

21A. Kind & Status Plug. Bond

Cash Statewide

21B. Drilling Contractor

Peterson Drilling

22. Approx. Date Work will start

December 7, 1987

23.

PROPOSED CASING AND CEMENT PROGRAM

SIZE OF HOLE	SIZE OF CASING	WEIGHT PER FOOT	SETTING DEPTH	SACKS OF CEMENT	EST. TOP
12-1/4"	8-5/8"	24#	410'	250	Surface
7-7/8"	5-1/2"	15.50 & 17#	3900'	1000	Surface

Queen zone will be selectively perforated and stimulated as needed for optimum production.

4. ABOVE SPACE DESCRIBE PROPOSED PROGRAM; IF PROPOSAL IS TO DEEPEN OR PLUG BACK, GIVE DATA ON PRESENT PRODUCTIVE ZONE AND PROPOSED NEW PRODUCTIVE ZONE. GIVE BLOWOUT PREVENTER PROGRAM, IF ANY.

hereby certify that the information above is true and complete to the best of my knowledge and belief.

Signed Amy L. Whitley Title Agent Date 11-11-87

(This space for State Use)

ORIGINAL SIGNED BY JERRY SEXTON

APPROVED BY DISTRICT 1 SUPERVISOR TITLE DATE

CONDITIONS OF APPROVAL, IF ANY:

Approved for drilling only --well cannot be produced until NSL is approved.

Permit Expires 6 Months From Approval Date Unless Drilling Underway.

NOV 23 1987

RECEIVED

NOV 13 1987

OCD

HOBBS OFFICE

NEW MEXICO OIL CONSERVATION COMMISSION
WELL LOCATION AND ACREAGE DEDICATION PLAT

Form C-102
Supersedes C-128
Effective 1-1-65

All distances must be from the outer boundaries of the Section.

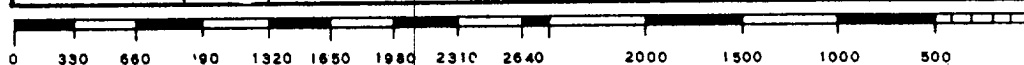
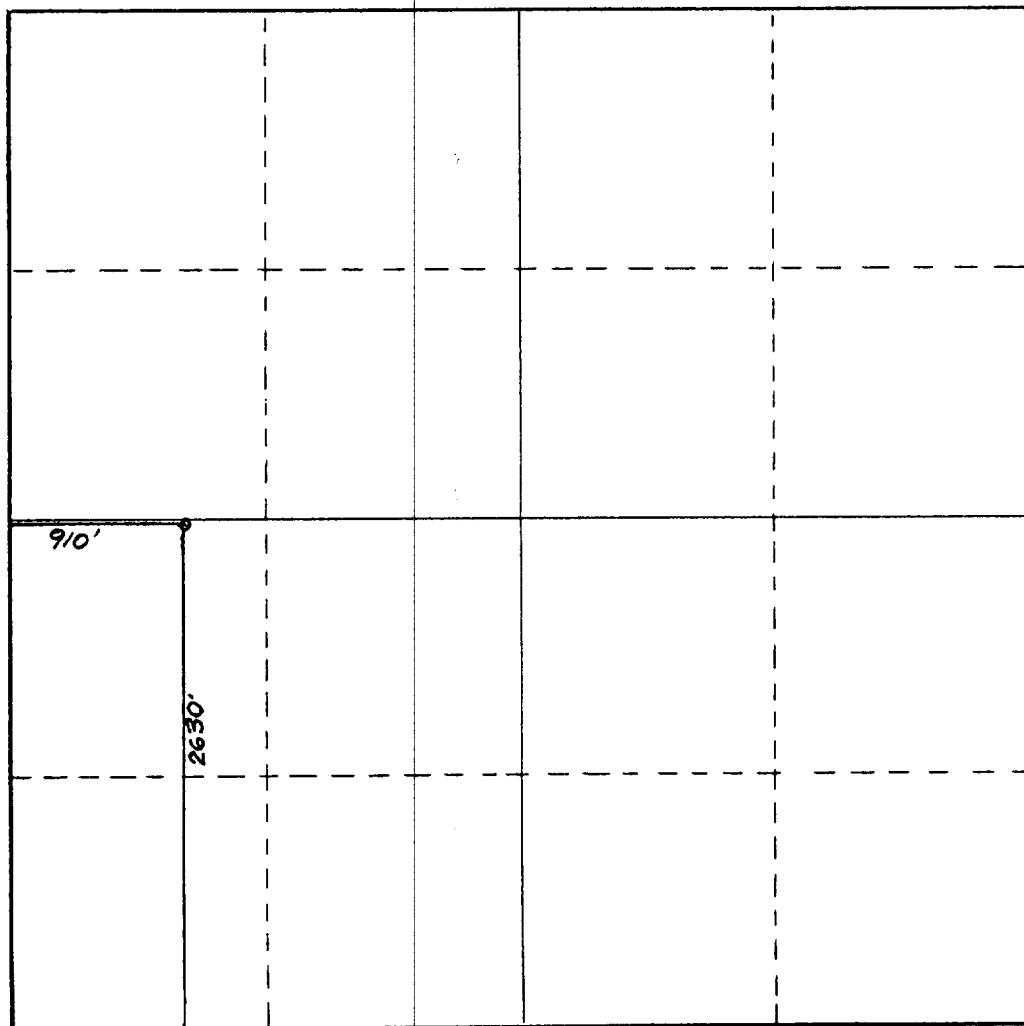
Operator SIRGO-COLLIER, INC.		Lease WDQSU 32-95		Well No. 32-95
Unit Letter L	Section 32	Township 24 South	Range 38 East	County Lea County, N.M.
Actual Footage Location of Well; 2630 feet from the South line and 910 feet from the West line				
Ground Level Elev. 3155.	Producing Formation Queen	Pool Dollarhide Queen	Dedicated Acreage: 40 Acres	

1. Outline the acreage dedicated to the subject well by colored pencil or hachure marks on the plat below.
2. If more than one lease is dedicated to the well, outline each and identify the ownership thereof (both as to working interest and royalty).
3. If more than one lease of different ownership is dedicated to the well, have the interests of all owners been consolidated by communitization, unitization, force-pooling, etc?

☒ Yes ☐ No If answer is "yes," type of consolidation R-2356, Unitization

If answer is "no," list the owners and tract descriptions which have actually been consolidated. (Use reverse side of this form if necessary.) _____

No allowable will be assigned to the well until all interests have been consolidated (by communitization, unitization, forced-pooling, or otherwise) or until a non-standard unit, eliminating such interests, has been approved by the Commission.



CERTIFICATION

I hereby certify that the information contained herein is true and complete to the best of my knowledge and belief.

Amy L. Whitley
Name

Amy L. Whitley

Position

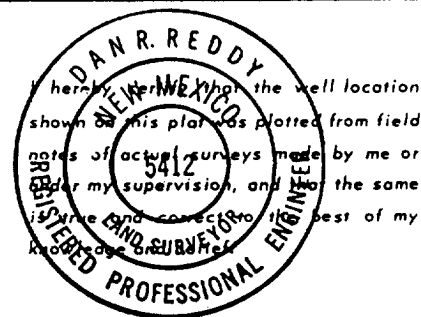
Agent

Company

Sirgo-Collier, Inc.

Date

11-11-87



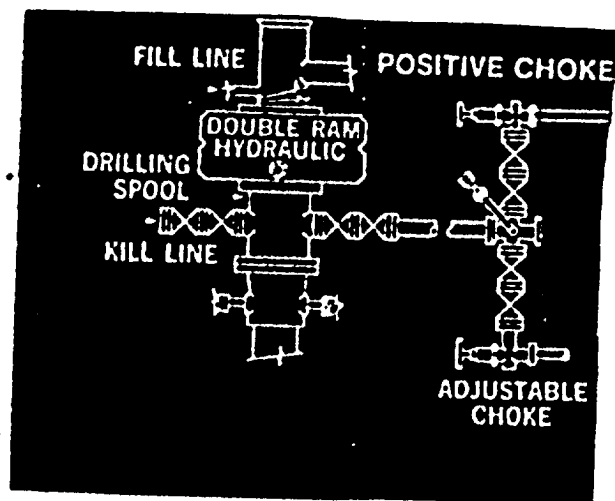
Date Surveyed

Nov. 9, 1987

Registered Professional Engineer
and/or Land Surveyor

Dan R. Reddy
Certificate No.

NM PE&LS NO, 5412



RECEIVED
MAY 13 1981
OCD
HOBBS OFFICE

290
88-81-1-8224
ELF