

STATE OF NEW MEXICO
ENERGY AND MINERALS DEPARTMENT

OIL CONSERVATION DIVISION
P. O. BOX 2088
SANTA FE, NEW MEXICO 87501

Form C-101
Revised 10-1-78

NO. OF COPIES RECEIVED	
DISTRIBUTION	
SANTA FE	
FILE	
U.S.G.S.	
LAND OFFICE	
OPERATOR	

5A. Indicate Type of Lease
STATE ☐ FEE ☒

5. State Oil & Gas Lease No.

APPLICATION FOR PERMIT TO DRILL, DEEPEN, OR PLUG BACK

1a. Type of Work

DRILL ☒

DEEPEN ☐

PLUG BACK ☐

b. Type of Well

OIL WELL ☒

GAS WELL ☐

OTHER

SINGLE ZONE ☒

MULTIPLE ZONE ☐

2. Name of Operator

Sirgo-Collier, Inc.

3. Address of Operator

P. O. Box 3531, Midland, Texas 79702

4. Location of Well

UNIT LETTER K LOCATED 2380 FEET FROM THE South LINE

AND 1570 FEET FROM THE West LINE OF SEC. 30 TWP. 24-S RGE. 38-E NMPM

7. Unit Agreement Name

West Dollarhide
Queen Sand Unit

8. Farm or Lease Name

9. Well No.

105

10. Field and Pool, or Wildcat

Dollarhide Queen

12. County

Lea

19. Proposed Depth

3900'

19A. Formation

Queen

20. Rotary or C.T.

Rotary

21. Elevations (show whether DF, KT, etc.)

GL 3120' KB 3131.5'

21A. Kind & Status Plug. Bond

Cash Statewide

21B. Drilling Contractor

Cactus Drlg.

22. Approx. Date Work will start

December 29, 1987

23.

PROPOSED CASING AND CEMENT PROGRAM

SIZE OF HOLE	SIZE OF CASING	WEIGHT PER FOOT	SETTING DEPTH	SACKS OF CEMENT	EST. TOP
12-1/4"	8-5/8"	24#	420'	250	Surface
7-7/8"	5-1/2"	15.5 & 17#	3900'	1000	Surface

Queen zone will be selectively perforated and stimulated as needed for optimum production.

ABOVE SPACE DESCRIBE PROPOSED PROGRAM: IF PROPOSAL IS TO DEEPEN OR PLUG BACK, GIVE DATA ON PRESENT PRODUCTIVE ZONE AND PROPOSED NEW PRODUCTIVE ZONE. GIVE BLOWOUT PREVENTER PROGRAM, IF ANY.

I hereby certify that the information above is true and complete to the best of my knowledge and belief.

Signed Amy L. Whitley Title Agent Date November 18, 1987

(This space for State Use)

Orig. Signed by

Paul Kautz

Geologist

APPROVED BY _____ TITLE _____ DATE DEC 11 1987

CONDITIONS OF APPROVAL, IF ANY:

Permit Expires 6 Months From Approval
Date Unless Drilling Underway

NE MEXICO OIL CONSERVATION COMMISSION
WELL LOCATION AND ACREAGE DEDICATION PLAT

Form C-102
Supersedes C-128
Effective 1-1-65

All distances must be from the outer boundaries of the Section.

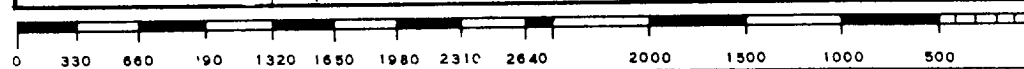
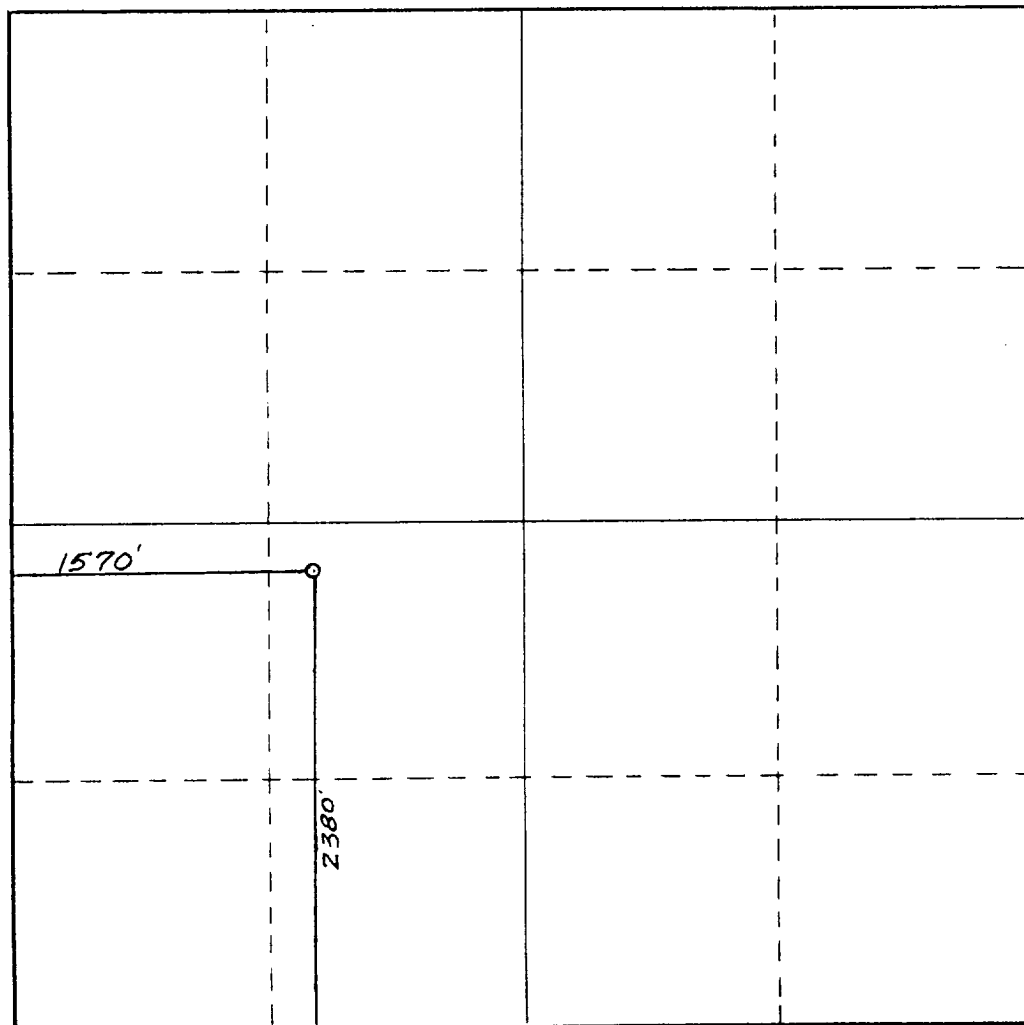
Operator SIRGO-COLLIER, INC.			Lease WDQSU 30-105		Well No. 105
Unit Letter K	Section 30	Township 24 South	Range 38 East	County Lea County, N.M.	
Actual Footage Location of Well: 2380 feet from the South line and 1570 feet from the West line					
Ground Level Elev. 3120.	Producing Formation Queen		Pool Dollarhide Queen		Dedicated Acreage: 40 Acres

1. Outline the acreage dedicated to the subject well by colored pencil or hachure marks on the plat below.
2. If more than one lease is dedicated to the well, outline each and identify the ownership thereof (both as to working interest and royalty).
3. If more than one lease of different ownership is dedicated to the well, have the interests of all owners been consolidated by communitization, unitization, force-pooling, etc?

☒ Yes ☐ No If answer is "yes," type of consolidation R-2356, Unitization

If answer is "no," list the owners and tract descriptions which have actually been consolidated. (Use reverse side of this form if necessary.) _____

No allowable will be assigned to the well until all interests have been consolidated (by communitization, unitization, forced-pooling, or otherwise) or until a non-standard unit, eliminating such interests, has been approved by the Commission.



CERTIFICATION

I hereby certify that the information contained herein is true and complete to the best of my knowledge and belief.

Amy L. Whitley

Name

Amy L. Whitley

Position

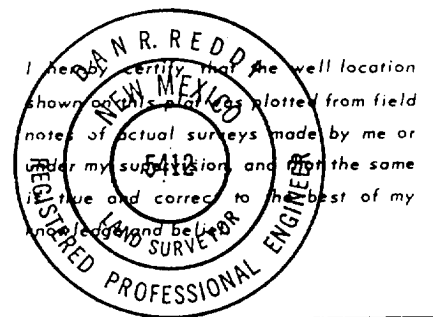
Agent

Company

Sirgo-Collier, Inc.

Date

11-18-87



Date Surveyed

November 13, 1987

Registered Professional Engineer
and/or Land Surveyor

Sam R. Reddy

Certificate No.

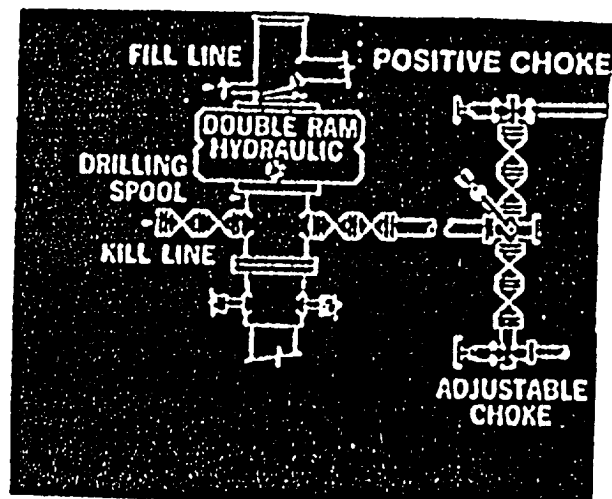
NM PE&LS NO. 5412

RECEIVED
NOV 19 1987
OCD
HOBBS OFFICE

BOP DESCRIPTION

CACTUS DRILLING

RIG #62



ELI
Incl 3/8/98