

## OIL CONSERVATION DIVISION

STATE OF NEW MEXICO  
ENERGY AND MINERALS DEPARTMENTP. O. BOX 2088  
SANTA FE, NEW MEXICO 87501Form C-102  
Revised 10-1-78

All distances must be from the outer boundaries of the Section.

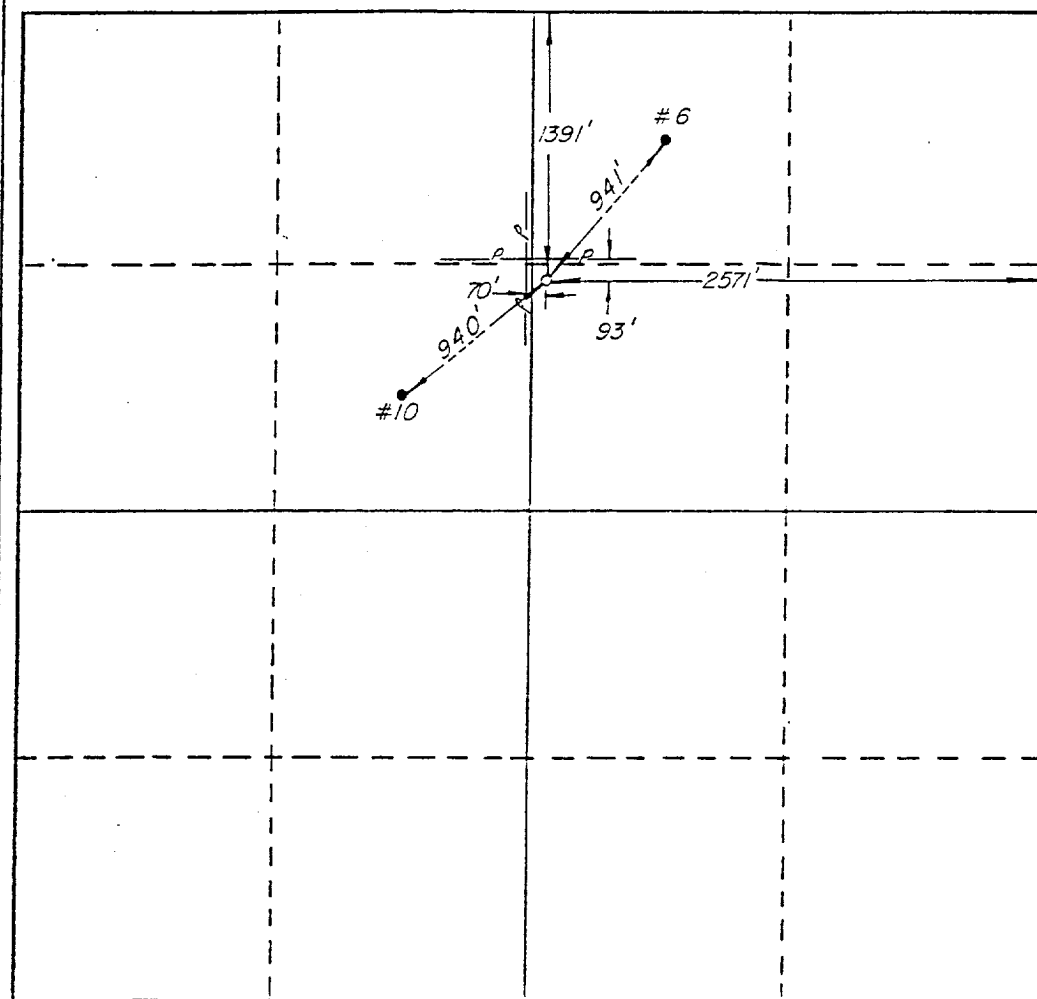
Operator <b>CITATION OIL &amp; GAS CORP</b>		Lease <b>LANGLE MATTIX UNIT #1</b>		Well No. <b>#19</b>
Unit Letter <b>G</b>	Section <b>23</b>	Township <b>T-24-S</b>	Range <b>R-37-E</b>	County <b>LEA</b>
Actual Footage Location of Well: <b>1391'</b> feet from the <b>NORTH</b> line and <b>2571'</b> feet from the <b>EAST</b> line				
Ground Level Elev. <b>3194'</b>	Producing Formation <b>Queen</b>	Pool <b>Langlie Mattix (Seven Rivers, Queen &amp; Grayburg)</b>		Dedicated Acreage: <b>40</b> Acres

1. Outline the acreage dedicated to the subject well by colored pencil or hachure marks on the plat below.
2. If more than one lease is dedicated to the well, outline each and identify the ownership thereof (both as to working interest and royalty).
3. If more than one lease of different ownership is dedicated to the well, have the interests of all owners been consolidated by communitization, unitization, force-pooling, etc?

☒ Yes ☐ No If answer is "yes," type of consolidation ~~Unitization~~ **unitization**

If answer is "no," list the owners and tract descriptions which have actually been consolidated. (Use reverse side of this form if necessary.) \_\_\_\_\_

No allowable will be assigned to the well until all interests have been consolidated (by communitization, unitization, forced-pooling, or otherwise) or until a non-standard unit, eliminating such interests, has been approved by the Division.



## CERTIFICATION

I hereby certify that the information contained herein is true and complete to the best of my knowledge and belief.

*Carole Favro*

Name

Carole Favro

Position

Prod. Admin. Mgr.

Company

CITATION OIL &amp; GAS CORP.

Date

November 16, 1987

I hereby certify that the well location shown on this plat was plotted from field notes of actual surveys made by me or under my supervision, and that the same is true and correct to the best of my knowledge and belief.

November 9, 1987

Date Surveyed

Richard S. Duniven

Registered Professional Engineer  
and/or Land Surveyor*Richard S. Duniven*

Certificate No.

4882