

NEW MEXICO OIL CONSERVATION COMMISSION
WELL LOCATION AND ACREAGE DEDICATION PLAT

Form C-102
Supersedes C-128
Effective 1-1-65

All distances must be from the outer boundaries of the Section

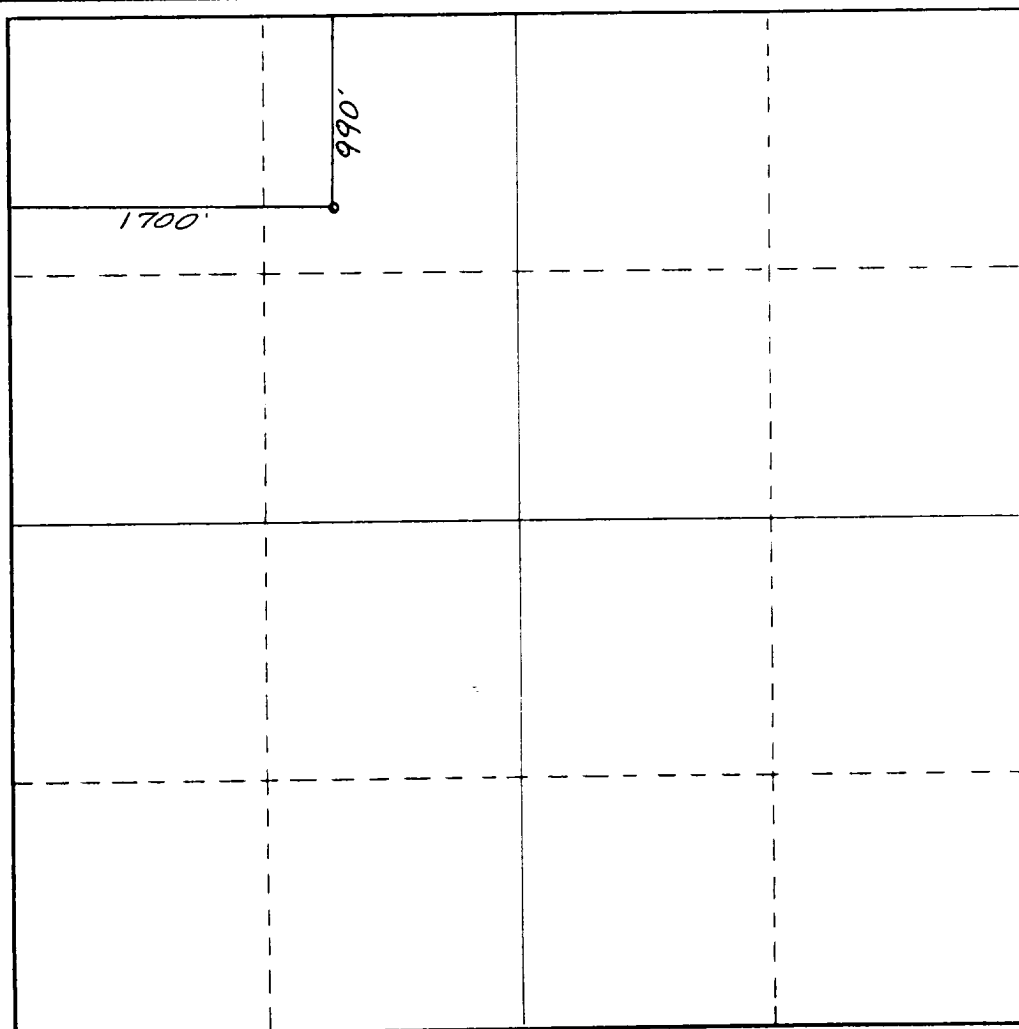
Operator SIRGO-COLLIER, INC.		Lease <u>West Dollarhide Queen</u> WDQSU 31-96		Well No. 96
Unit Letter C	Section 31	Township 24 South	Range 38 East	County Lea County, N.M.
Actual Footage Location of Well: 990 feet from the North line and 1700 feet from the West line				
Ground Level Elev. 3124.	Producing Formation Queen	Pool Dollarhide Queen	Dedicated Acreage 40 Acres	

1. Outline the acreage dedicated to the subject well by colored pencil or hachure marks on the plat below.
2. If more than one lease is dedicated to the well, outline each and identify the ownership thereof (both as to working interest and royalty).
3. If more than one lease of different ownership is dedicated to the well, have the interests of all owners been consolidated by communitization, unitization, force-pooling, etc?

☒ Yes ☐ No If answer is "yes," type of consolidation R-2356 Unitization

If answer is "no," list the owners and tract descriptions which have actually been consolidated. (Use reverse side of this form if necessary.)

No allowable will be assigned to the well until all interests have been consolidated (by communitization, unitization, forced-pooling, or otherwise) or until a non-standard unit, eliminating such interests, has been approved by the Commission.



CERTIFICATION

I hereby certify that the information contained herein is true and complete to the best of my knowledge and belief.

Amy L. Whitley
Name

Amy L. Whitley

Position

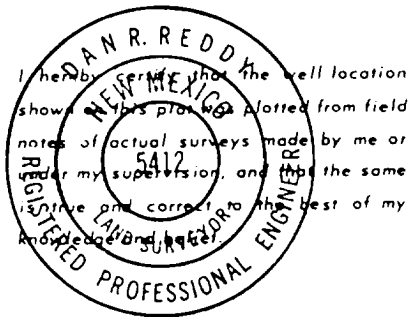
Agent

Company

Sirgo-Collier, Inc.

Date

11-10-87



Date Surveyed

November 4, 1987

Registered Professional Engineer
and/or Land Surveyor

Dan R. Reddy
Certificate No.

NM PE&LS NO, 5412

