

STATE OF NEW MEXICO
ENERGY AND MINERALS DEPARTMENT

OIL CONSERVATION DIVISION
P. O. BOX 2088
SANTA FE, NEW MEXICO 87501

30-025-30193

Form C-101
Revised 10-1-78

| | | |
|------------------------|--|--|
| NO. OF COPIES RECEIVED | | |
| DISTRIBUTION | | |
| SANTA FE | | |
| FILE | | |
| U.S.G.S. | | |
| LAND OFFICE | | |
| OPERATOR | | |

5A. Indicate Type of Lease
STATE ☒ FEE ☐

5. State Oil & Gas Lease No.
B-9519

APPLICATION FOR PERMIT TO DRILL, DEEPEN, OR PLUG BACK

1a. Type of Work

DRILL ☒

DEEPEN ☐

PLUG BACK ☐

b. Type of Well

OIL WELL ☐

GAS WELL ☐

OTHER Water injection well SINGLE ZONE ☒

MULTIPLE ZONE ☐

2. Name of Operator

Sirgo-Collier, Inc.

3. Address of Operator

P. O. Box 3531, Midland, Texas 79702

4. Location of Well

UNIT LETTER M LOCATED 618 FEET FROM THE South LINE

AND 568 FEET FROM THE West LINE OF SEC. 29 TWP. 24-S RGE. 38-E NMPM

7. Unit Agreement Name
West Dollarhide Queen Sand Unit

8. Farm or Lease Name

9. Well No.

112

10. Field and Pool, or Wildcat
Dollarhide Queen

12. County

Lea

19. Proposed Depth

4000'

19A. Formation

Queen

20. Rotary or C.T.

Rotary

21. Elevations (Show whether DF, KT, etc.)

3170' GR

21A. Kind & Status Plug. Bond

Cash Statewide

21B. Drilling Contractor

CapStar Drlg

22. Approx. Date Work will start

January 15, 1987

23.

PROPOSED CASING AND CEMENT PROGRAM

| SIZE OF HOLE | SIZE OF CASING | WEIGHT PER FOOT | SETTING DEPTH | SACKS OF CEMENT | EST. TOP |
|--------------|----------------|-----------------|---------------|-----------------|----------|
| 12-1/4" | 8-5/8" | 24# | 400' | 250 | Surface |
| 7-7/8" | 5-1/2" | 15.5# | 4000' | 1200 | Surface |

Queen zone will be selectively perforated and acidized for optimum water injectivity rates.

Permit Expires 6 Months From Approval Date Unless Drilling Underway.

ABOVE SPACE DESCRIBE PROPOSED PROGRAM; IF PROPOSAL IS TO DEEPEN OR PLUG BACK, GIVE DATA ON PRESENT PRODUCTIVE ZONE AND PROPOSED NEW PRODUCTIVE ZONE. GIVE BLOWOUT PREVENTER PROGRAM, IF ANY.

hereby certify that the information above is true and complete to the best of my knowledge and belief.

Signed Amy L. Whitley Title Agent Date December 29, 1987

(This space for State Use)
ORIGINAL SIGNED BY JERRY SEXTON
DISTRICT 1 SUPERVISOR

APPROVED BY _____ TITLE _____ DATE _____

CONDITIONS OF APPROVAL, IF ANY:

APPROVED FOR DRILLING ONLY - CANNOT INJECT UNTIL APPROVAL FROM SANTA FE

DEC 30 1987

1987-1988

RECEIVED
DEC 30 1987
HOBBS OFFICE

NEW MEXICO OIL CONSERVATION COMMISSION
WELL LOCATION AND ACREAGE DEDICATION PLAT

Form C-102
Supersedes C-128
Effective 1-1-65

All distances must be from the outer boundaries of the Section

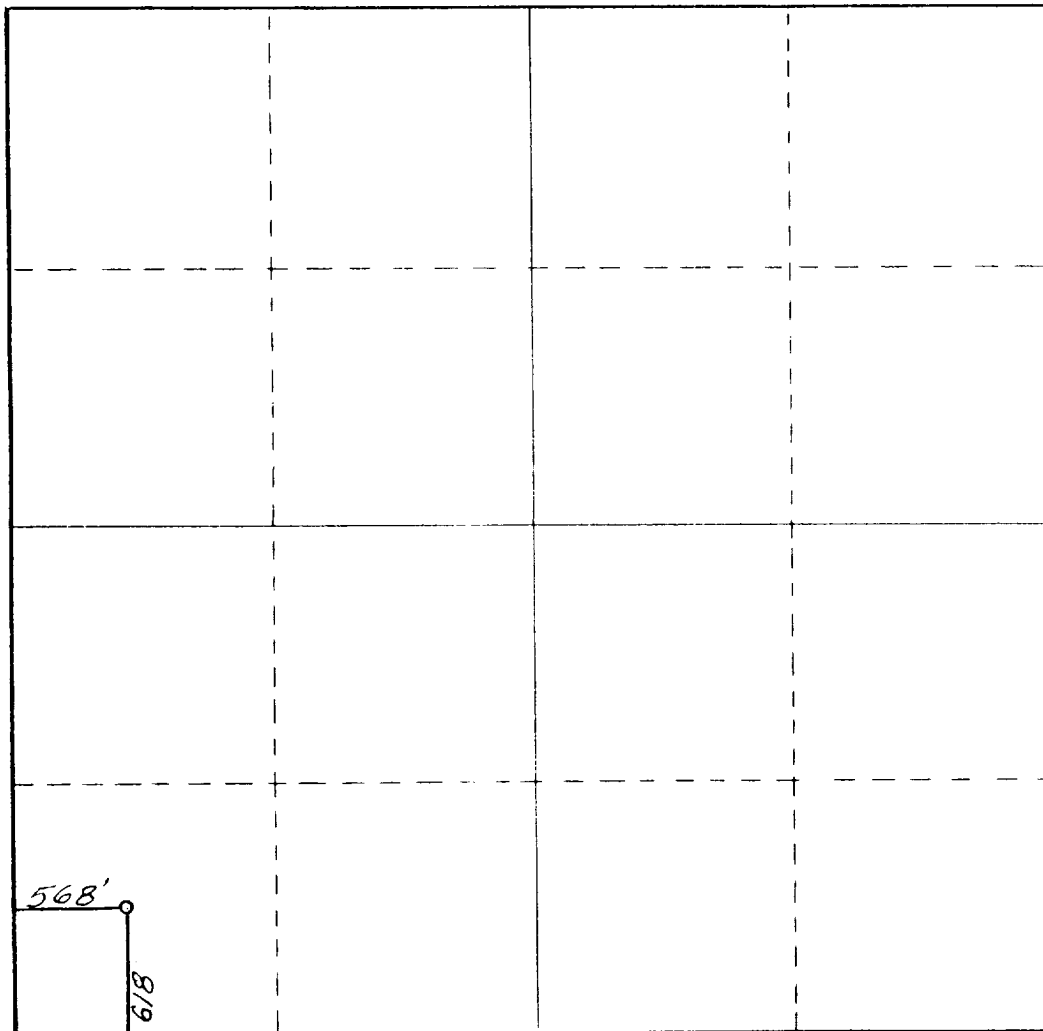
| | | | | |
|--|-------------------------------------|---|--------------------------------|-----------------------------------|
| Operator SIRGO-COLLIER, INC. | | Lease WDQSU 29-112 | | Well No. 112 |
| Unit Letter M | Section 29 | Township 24 South | Range 38 East | County Lea County, N.M. |
| Actual Footage Location of Well: 618 feet from the South line and 568 feet from the West line | | | | |
| Ground Elevation 3170. | Producing Formation Queen | Pool Dollarhide Queen | Dedicated Acreage 40 | |

1. Outline the acreage dedicated to the subject well by colored pencil or hachure marks on the plat below.
2. If more than one lease is dedicated to the well, outline each and identify the ownership thereof (both as to working interest and royalty).
3. If more than one lease of different ownership is dedicated to the well, have the interests of all owners been consolidated by communitization, unitization, force-pooling, etc?

☒ Yes ☐ No If answer is "yes," type of consolidation Unitization, R-2356

If answer is "no," list the owners and tract descriptions which have actually been consolidated. (Use reverse side of this form if necessary.) _____

No allowable will be assigned to the well until all interests have been consolidated (by communitization, unitization, forced-pooling, or otherwise) or until a non-standard unit, eliminating such interests, has been approved by the Commission.



CERTIFICATION

I hereby certify that the information contained herein is true and complete to the best of my knowledge and belief.

Amy L. Whitley
Name
Amy L. Whitley

Position
Agent

Company
Sirgo-Collier, Inc.

Date
December 30, 1987

I hereby certify that the well location shown on this plat was plotted from field notes of actual surveys made by me or under my supervision, and that the same is true and correct to the best of my knowledge and belief.

Date Surveyed

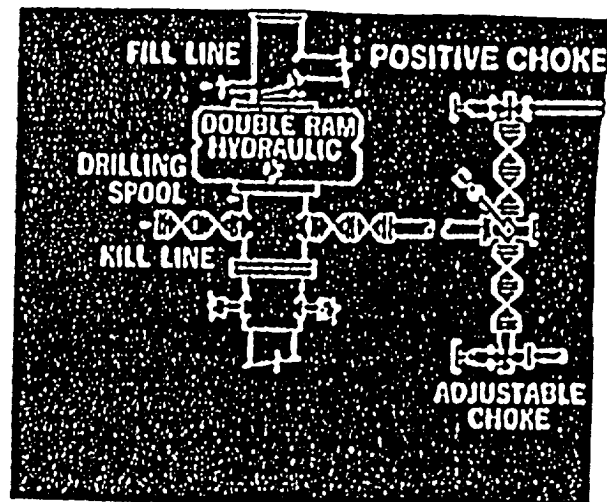
December 28, 1987

Registered Professional Engineer and/or Land Surveyor

Man R. Reddy
Certificate No.

NM PE&LS NO. 5412

BOP



RECEIVED

DEC 30 1987

OCD
HOBBY OFFICE