

STATE OF NEW MEXICO  
ENERGY AND MINERALS DEPARTMENT

OIL CONSERVATION DIVISION

P. O. BOX 2088  
SANTA FE, NEW MEXICO 87501

Form C-101  
Revised 10-1-78

NO. OF COPIES RECEIVED	
DISTRIBUTION	
SANTA FE	
FILE	
U.S.G.S.	
LAND OFFICE	
OPERATOR	

5A. Indicate Type of Lease  
STATE ☒ FEE ☐

5. State Oil & Gas Lease No.  
B-9519

APPLICATION FOR PERMIT TO DRILL, DEEPEN, OR PLUG BACK

1a. Type of Work

b. Type of Well  
OIL WELL ☐ GAS WELL ☐ OTHER Water injection well ☒ SINGLE ZONE ☒ MULTIPLE ZONE ☐  
DRILL ☒ DEEPEN ☐ PLUG BACK ☐

7. Unit Agreement Name  
West Dollarhide Queen  
Sand Unit

8. Farm or Lease Name

2. Name of Operator

Sirgo-Collier, Inc.

9. Well No.

108

3. Address of Operator

P. O. Box 3531, Midland, Texas 79702

10. Field and Pool, or Wildcat  
Dollarhide Queen

4. Location of Well

UNIT LETTER H 2 LOCATED 2310 FEET FROM THE North LINE

AND 380 FEET FROM THE West LINE OF SEC. 29 TWP. 24-S RCE. 38-E NMPM

12. County  
Lea

11. Elevations (show whether DF, KT, etc.)

3178' GR

21A. Kind & Status Plug. Bond

Cash Statewide

19. Proposed Depth

4000'

19A. Formation

Queen

20. Rotary or C.T.

Rotary

21B. Drilling Contractor

CapStar Drlg

22. Approx. Date Work will start

January 1, 1988

23.

PROPOSED CASING AND CEMENT PROGRAM

SIZE OF HOLE	SIZE OF CASING	WEIGHT PER FOOT	SETTING DEPTH	SACKS OF CEMENT	EST. TOP
12-1/4"	8-5/8"	24#	400'	250	Surface
7-7/8"	5-1/2"	15.5#	4000'	1200	Surface

Queen zone will be selectively perforated and acidized for optimum water injectivity rates.

ABOVE SPACE DESCRIBE PROPOSED PROGRAM: IF PROPOSAL IS TO DEEPEN OR PLUG BACK, GIVE DATA ON PRESENT PRODUCTIVE ZONE AND PROPOSED NEW PRODUCTION ZONE. GIVE BLOWOUT PREVENTER PROGRAM, IF ANY.

hereby certify that the information above is true and complete to the best of my knowledge and belief.

Signed Amy L. Whitley Title Agent Date December 29, 1987

(This space for State Use)

ORIGINAL SIGNED BY JERRY SEXTON  
DISTRICT I SUPERVISOR

APPROVED BY \_\_\_\_\_ TITLE \_\_\_\_\_

CONDITIONS OF APPROVAL, IF ANY:

WEX-570

APR 13 1988

Permit Expires 6 Months From Approval.  
Does Not Less Drilling Underway.

RECEIVED  
DEC 30 1987  
OCD  
HOBBS OFFICE

NE' MEXICO OIL CONSERVATION COMMISSION  
WELL LOCATION AND ACREAGE DEDICATION PLAT

Form C-107  
Supersedes C-128  
Effective 1-1-85

All distances must be from the outer boundaries of the Section

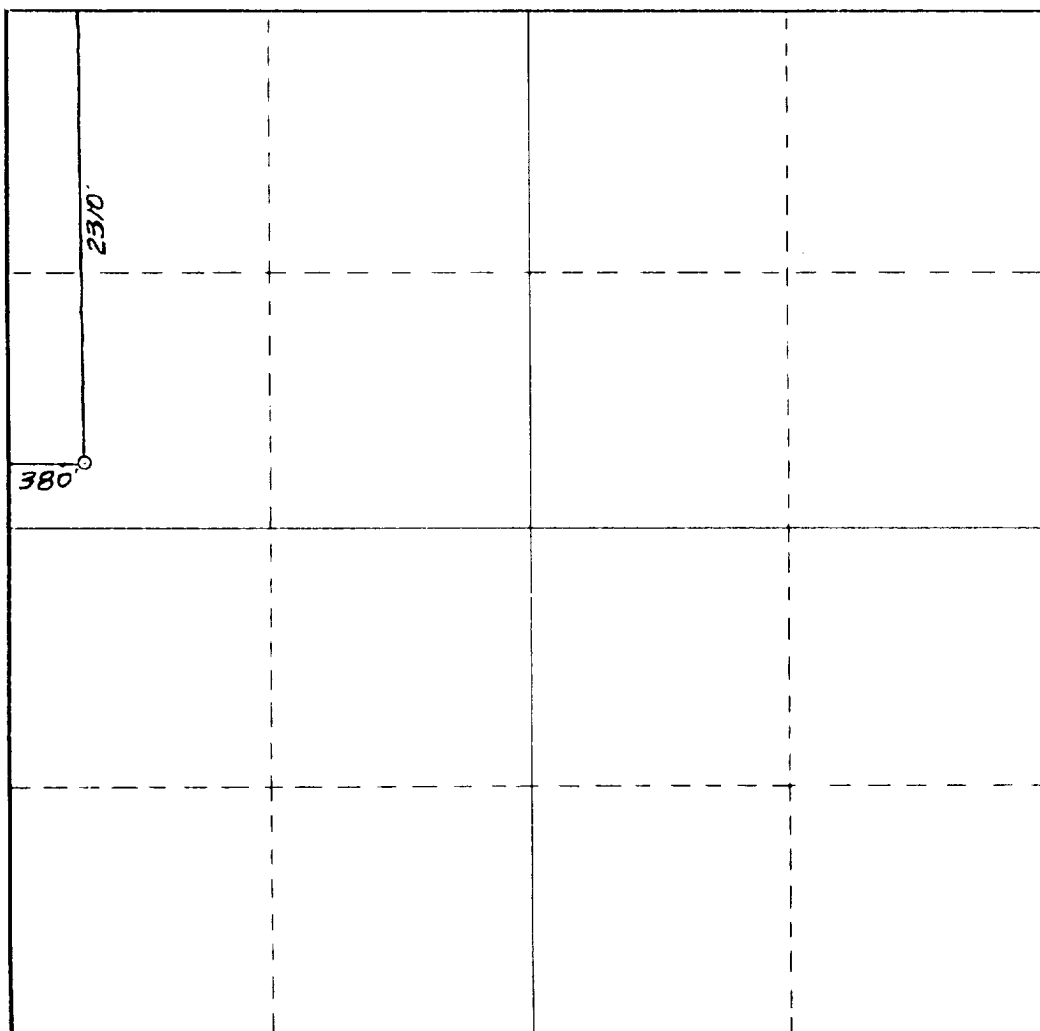
Operator SIRGO-COLLIER, INC.		Lease WDQSU 29-108		Well No. 108
Unit Letter E	Section 29	Township 24 South	Range 38 East	County Lea County, N.M.
Actual Footage Location of Well: 2310 feet from the North line and 380 feet from the West line				
Ground Level Elev. 3178.	Producing Formation Queen	Pool Dollarhide Queen	Dedicated Acreage 40	

1. Outline the acreage dedicated to the subject well by colored pencil or hachure marks on the plat below.
2. If more than one lease is dedicated to the well, outline each and identify the ownership thereof (both as to working interest and royalty).
3. If more than one lease of different ownership is dedicated to the well, have the interests of all owners been consolidated by communitization, unitization, force-pooling, etc?

☒ Yes ☐ No If answer is "yes," type of consolidation Unitization, R-2356

If answer is "no," list the owners and tract descriptions which have actually been consolidated. (Use reverse side of this form if necessary.) \_\_\_\_\_

No allowable will be assigned to the well until all interests have been consolidated (by communitization, unitization, forced-pooling, or otherwise) or until a non-standard unit, eliminating such interests, has been approved by the Commission.



CERTIFICATION

I hereby certify that the information contained herein is true and complete to the best of my knowledge and belief.

*Amy L. Whitley*  
Name

Amy L. Whitley

Position  
Agent

Company  
Sirgo-Collier, Inc.

Date  
December 30, 1987

I hereby certify that the well location shown on this plat was plotted from field notes of actual surveys made by me or under my supervision, and that the same is true and correct to the best of my knowledge and belief.

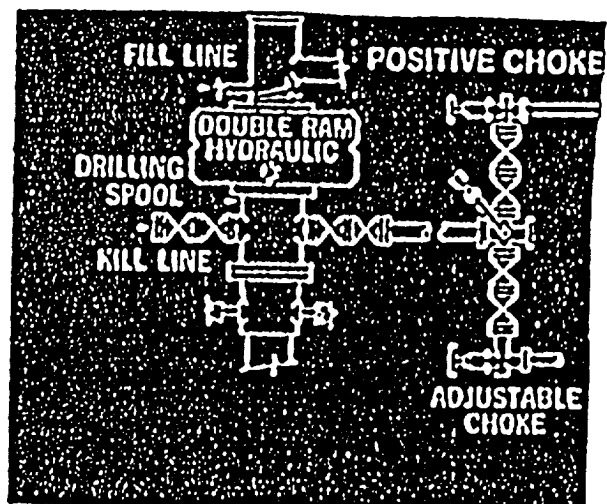
Date Surveyed  
December 28, 1987

Registered Professional Engineer  
and/or Land Surveyor

*Jan R. Reddy*  
Certificate No.

NM PE&LS NO. 5412

# BOP



17022.3/15/90

ELF