

DISTRICT I

P.O. Box 1980, Hobbs, NM 88241-1980

DISTRICT II

P.O. Box Drawer DD, Artesia, NM 88211-0719

DISTRICT III

1000 Rio Brazos Rd., Aztec, NM 87410

DISTRICT IV

P.O. Box 2088, Santa Fe, NM 87504-2088

State of New Mexico
Energy, Minerals and Natural Resources Department

OIL CONSERVATION DIVISION

P.O. Box 2088
Santa Fe, New Mexico 87504-2088

Form C-101

Revised February 10, 1994

Instructions on back

Submit to Appropriate District Office

State Lease - 6 Copies

Fee Lease - 5 Copies

☐ AMENDED REPORT

APPLICATION FOR PERMIT TO DRILL, RE-ENTER, DEEPEN, PLUGBACK, OR ADD A ZONE

¹ Operator Name and Address TEXACO EXPLORATION & PRODUCTION INC. 205 E. Bender, HOBBS, NM 88240		² OGRID Number 022351
		³ API Number 30 025 30229
⁴ Property Code 010926	⁵ Property Name WEST DOLLARHIDE DRINKARD UNIT	
		⁶ Well No. 93

⁷ Surface Location

Ul or lot no.	Section	Township	Range	Lot.Idn	Feet From The	North/South Line	Feet From The	East/West Line	County
G	32	24S	38E		1535	NORTH	2575	EAST	LEA

⁸ Proposed Bottom Hole Location If Different From Surface

Ul or lot no.	Section	Township	Range	Lot.Idn	Feet From The	North/South Line	Feet From The	East/West Line	County
G/C	32	24S	38E		1535/1250	NORTH/NORTH	1575/2000	EAST/WEST	LEA

⁹ Proposed Pool 1 DOLLARHIDE DRINKARD	¹⁰ Proposed Pool 2
---	-------------------------------

¹¹ Work Type Code E P	¹² WellType Code O	¹³ Rotary or C.T. R	¹⁴ Lease Type Code S	¹⁵ Ground Level Elevation GR 3185 KB 3200
¹⁶ Multiple No	¹⁷ Proposed Depth 6479	¹⁸ Formation DRINKARD	¹⁹ Contractor YALE	²⁰ Spud Date

²¹ Proposed Casing and Cement Program

SIZE OF HOLE	SIZE OF CASING	WEIGHT PER FOOT	SETTING DEPTH	SACKS OF CEMENT	EST. TOP
17 1/2	13 5/8	54 1/2#	1228'	1400 SX TOC 110'	
7 7/8	5 1/2	151/2 17#	6960'	3400 sx 2stg DV	

²² Describe the proposed program. If this application is to DEEPEN or PLUG BACK give the data on the present productive zone and proposed new productive zone. Describe the blowout prevention program, if any. Use additional sheets if necessary.

MIRU, Set a permanent packer @ +/- 6479 (5 1/2" 17#/ft J55 pipe) T1H with latch (1.0') space out assembly (+/- 70' drill collars) debris sub (2.55') and the 1 1/2 degree multi-lateral selective / reentry whipstock (top of window +/- 6386, bottom of window +/- 6398') The planned laterals will be horizontal drilled 780' to the Northwest 334.58 degrees 1000' horizontal section 90 degrees to the East lateral.

²³ I hereby certify that the rules and regulations of the Oil Conservation Division have been complied with and that the information given above is true and complete to the best of my knowledge and belief.

Signature *M. Quintana*

Printed Name Mike Quintana

Title Engineering Assistant

Date 12/31/97

Telephone 397-0419

OIL CONSERVATION DIVISION

Approved By: ORIGINAL SIGNED BY CHRIS WILLIAMS
DISTRICT I SUPERVISOR

Title:

Approval Date: 12 20 1998

Expiration Date:

Conditions of Approval:

Attached ☐

DISTRICT I

P.O. Box 1980, Hobbs, NM 88241-1980

DISTRICT II

P.O. Box Drawer DD, Artesia, NM 88211-0719

DISTRICT III

1000 Rio Brazos Rd., Aztec, NM 87410

DISTRICT IV

P.O. Box 2088, Santa Fe, NM 87504-2088

State of New Mexico

Energy, Minerals and Natural Resources Department

Form C-102

Revised February 10, 1994

Instructions on back

Submit to Appropriate District Office

State Lease - 4 Copies

Fee Lease - 3 Copies

☐ AMENDED REPORT

OIL CONSERVATION DIVISION

P.O. Box 2088

Santa Fe, New Mexico 87504-2088

WELL LOCATION AND ACREAGE DEDICATION PLAT

¹ API Number 30 025 30229	² Pool Code 18830	³ Pool Name DOLLARHIDE DRINKARD
⁴ Property Code 010926	⁵ Property Name WEST DOLLARHIDE DRINKARD UNIT	⁶ Well No. 93
⁷ OGRID Number 022351	⁸ Operator Name TEXACO EXPLORATION & PRODUCTION INC.	⁹ Elevation GR 3185 KB 3200

¹⁰ Surface Location

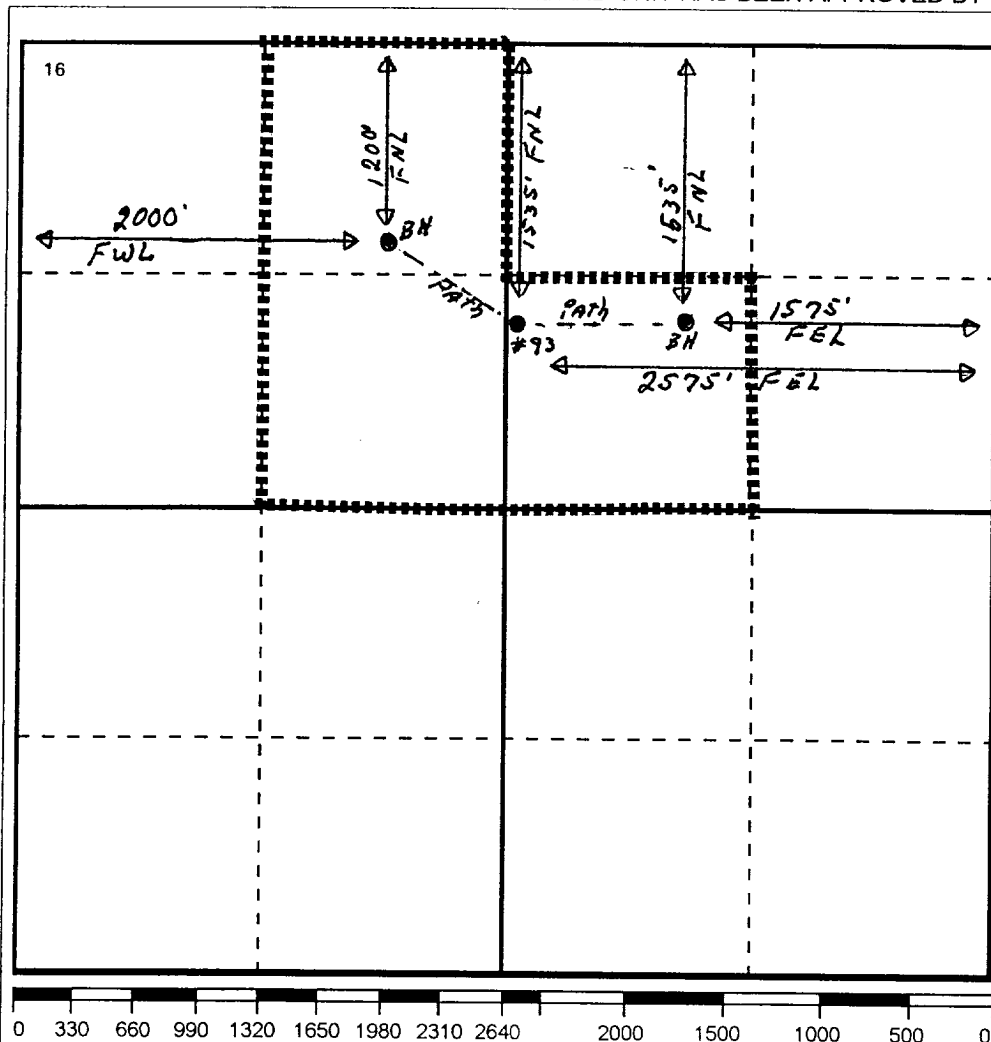
UI or lot no.	Section	Township	Range	Lot.Idn	Feet From The	North/South Line	Feet From The	East/West Line	County
G	32	24S	38E		1535	NORTH	2575	EAST	LEA

¹¹ Bottom Hole Location If Different From Surface

UI or lot no.	Section	Township	Range	Lot.Idn	Feet From The	North/South Line	Feet From The	East/West Line	County
G/C	32	24S	38E		1535/1200'	NORTH/North	1575/2000'	EAST/West	LEA

¹² Dedicated Acres 120	¹³ Joint or Infill No	¹⁴ Consolidation Code	¹⁵ Order No.
--------------------------------------	-------------------------------------	----------------------------------	-------------------------

NO ALLOWABLE WILL BE ASSIGNED TO THIS COMPLETION UNTIL ALL INTERESTS HAVE BEEN CONSOLIDATED
OR A NON-STANDARD UNIT HAS BEEN APPROVED BY THE DIVISION



17 OPERATOR CERTIFICATION

I hereby certify that the information contained herein is true and complete to the best of my knowledge and belief

Signature

Printed Name

Mike Quintana

Position

Engineering Assistant

Date

1/20/98

18 SURVEYOR CERTIFICATION

I hereby certify that the well location shown on this plat was plotted from field notes of actual surveys made by me or under my supervision, and that the same is true and correct to the best of my knowledge and belief.

Date Surveyed

Signature & Seal of
Professional Surveyor

Certificate No.

