

STATE OF NEW MEXICO  
ENERGY AND MINERALS DEPARTMENT

OIL CONSERVATION DIVISION

P. O. BOX 2088  
SANTA FE, NEW MEXICO 87501

30-025-30232  
Form C-101  
Revised 10-1-78

NO. OF COPIES RECEIVED	
DISTRIBUTION	
SANTA FE	
FILE	
U.S.G.S.	
LAND OFFICE	
OPERATOR	

5A. Indicate Type of Lease  
STATE ☒ FEE ☐

5. State Oil & Gas Lease No.  
B-9311

APPLICATION FOR PERMIT TO DRILL, DEEPEN, OR PLUG BACK

1a. Type of Work

DRILL ☒

DEEPEN ☐

PLUG BACK ☐

b. Type of Well

OIL WELL ☒

GAS WELL ☐

OTHER

SINGLE ZONE ☒

MULTIPLE ZONE ☐

2. Name of Operator

Sirgo-Collier, Inc.

3. Address of Operator

P. O. Box 3531, Midland, Texas 79702

4. Location of Well

UNIT LETTER K LOCATED 1470 FEET FROM THE South LINE

AND 2340 FEET FROM THE West LINE OF SEC. 32 TWP. 24S RGE. 38E NMPM

7. Unit Agreement Name  
West Dollarhide Queen Sand Unit

8. Farm or Lease Name

9. Well No.  
121

10. Field and Pool, or Wildcat  
Dollarhide Queen

12. County  
Lea

11. Elevations (Show whether DF, KT, etc.)

3164' GR 3175.5' KB

21A. Kind & Status Plug. Bond

Cash Statewide

19. Proposed Depth

4000'

19A. Formation

Queen

20. Rotary or C.T.

Rotary

21B. Drilling Contractor

Peterson Drilling

22. Approx. Date Work will start

March 1, 1988

23.

PROPOSED CASING AND CEMENT PROGRAM

SIZE OF HOLE	SIZE OF CASING	WEIGHT PER FOOT	SETTING DEPTH	SACKS OF CEMENT	EST. TOP
12-1/4"	8-5/8"	24#	420'	250 sx	Surface
7-7/8"	5-1/2"	15.5 & 17#	4000'	1200 sx	Surface

The Queen zone will be selectively perforated and stimulated as needed for optimum production.

Texaco Producing, Inc. operates the West Dollarhide Drinkard Unit #62 also located in this quarter quarter section.

ABOVE SPACE DESCRIBE PROPOSED PROGRAM: IF PROPOSAL IS TO DEEPEN OR PLUG BACK, GIVE DATA ON PRESENT PRODUCTIVE ZONE AND PROPOSED NEW PRODUCTION ZONE. GIVE BLOWOUT PREVENTER PROGRAM, IF ANY.

I hereby certify that the information above is true and complete to the best of my knowledge and belief.

Signed Amy L. Whitley Title Agent Date February 9, 1988

(This space for State Use)  
Orig. Signed by  
Paul Kautz  
Geologist

APPROVED BY \_\_\_\_\_ TITLE \_\_\_\_\_ DATE FEB 16 1988

CONDITIONS OF APPROVAL, IF ANY:

Permit Expires 6 Months From Approval Date Unless Drilling Underway.

Diff 2469

NEW MEXICO OIL CONSERVATION COMMISSION  
WELL LOCATION AND ACREAGE DEDICATION PLAT

Form C-102  
Supersedes C-128  
Effective 1-1-65

All distances must be from the outer boundaries of the Section.

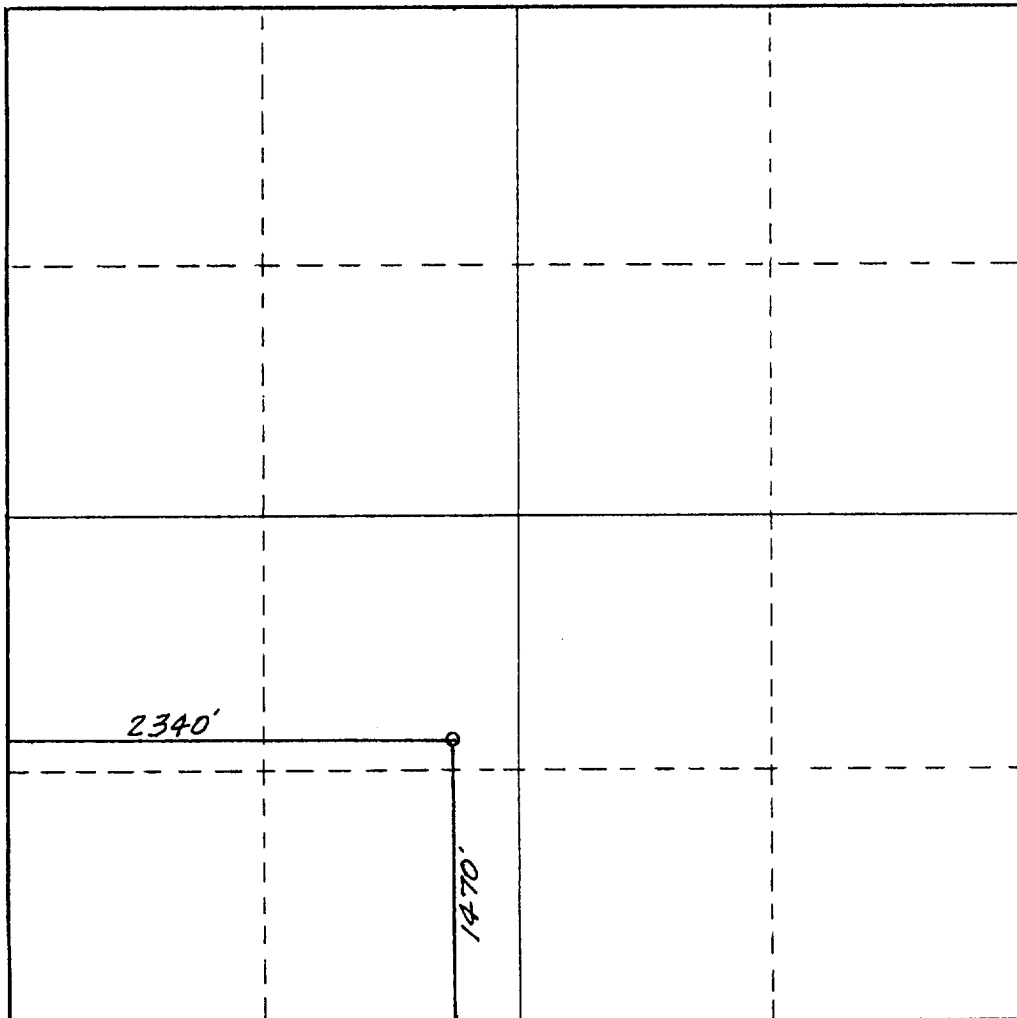
Operator <b>SIRGO-COLLIER, INC.</b>			Lease <b>West Dollarhide Queen Sand Unit</b>		Well No. <b>121</b>
Unit Letter <b>K</b>	Section <b>32</b>	Township <b>24 South</b>	Range <b>38 East</b>	County <b>Lea County, N.M.</b>	
Actual Footage Location of Well: <b>2340</b> feet from the <b>West</b> line and <b>1470</b> feet from the <b>South</b> line					
Ground Level Elev. <b>3164.</b>	Producing Formation <b>Queen</b>		Pool <b>Dollarhide Queen</b>		Dedicated Acreage: <b>40</b> Acres

1. Outline the acreage dedicated to the subject well by colored pencil or hachure marks on the plat below.
2. If more than one lease is dedicated to the well, outline each and identify the ownership thereof (both as to working interest and royalty).
3. If more than one lease of different ownership is dedicated to the well, have the interests of all owners been consolidated by communitization, unitization, force-pooling, etc?

☒ Yes ☐ No If answer is "yes," type of consolidation Unitization, R-2356

If answer is "no," list the owners and tract descriptions which have actually been consolidated. (Use reverse side of this form if necessary.) \_\_\_\_\_

No allowable will be assigned to the well until all interests have been consolidated (by communitization, unitization, forced-pooling, or otherwise) or until a non-standard unit, eliminating such interests, has been approved by the Commission.



CERTIFICATION

I hereby certify that the information contained herein is true and complete to the best of my knowledge and belief.

*Amy L. Whitley*  
Name

Amy L. Whitley

Position

Agent

Company

Sirgo-Collier, Inc.

Date

February 9, 1988

**DAN R. REDDY**  
NEW MEXICO  
I hereby certify that the well location shown on this plat was plotted from field notes of October 12, 1987, made by me or under my supervision, and that the same are true and correct to the best of my knowledge and belief.  
LAND SURVEYOR  
PROFESSIONAL ENGINEER

Date Surveyed

January 30, 1988

Registered Professional Engineer and/or Land Surveyor

*Dan R. Reddy*

Certificate No.

NM PE&LS NO. 5412

0 330 660 990 1320 1650 1980 2310 2640 2000 1500 1000 500 0

RECEIVED

FEB 15 1988

OCD  
HOBS OFFICE

