

Submit to Appropriate
District Office
State Lease -- 6 copies
Fee Lease -- 5 copies

State of New Mexico
Energy, Minerals and Natural Resources Department

Form C-101
Revised 1-1-89

OIL CONSERVATION DIVISION

P.O. Box 2088
Santa Fe, New Mexico 87504-2088

DISTRICT I
P.O. Box 1980, Hobbs, NM 88240

DISTRICT II
P.O. Drawer DD, Artesia, NM 88210

DISTRICT III
1000 Rio Brazos Rd., Aztec, NM 87410

API NO. (assigned by OCD on New Wells)

30-025-30287

5. Indicate Type of Lease

STATE ☒

FEE ☐

6. State Oil & Gas Lease No.

B-9613

APPLICATION FOR PERMIT TO DRILL, DEEPEN, OR PLUG BACK

1a. Type of Work:

DRILL ☒

RE-ENTER ☐

DEEPEN ☐

PLUG BACK ☐

b. Type of Well:

OIL
WELL ☐

GAS
WELL ☐

OTHER Water Injection

SINGLE
ZONE ☒

MULTIPLE
ZONE ☐

7. Lease Name or Unit Agreement Name

West Dollarhide Queen Sand
Unit

2. Name of Operator

Sirgo Operating, Inc.

8. Well No.

110

3. Address of Operator

P.O. Box 3531, Midland, Texas 79702

9. Pool name or Wildcat

Dollarhide Queen

4. Well Location

Unit Letter C : 820 Feet From The North Line and 1570 Feet From The West Line

Section 32

Township 24S

Range 38E

NMPM

Lea

County

10. Proposed Depth

3900'

11. Formation

Queen

12. Rotary or C.T.

Rotary

13. Elevations (Show whether DF, RT, GR, etc.)

3174' GR

14. Kind & Status Plug. Bond

Cash Statewide

15. Drilling Contractor

Peterson

16. Approx. Date Work will start

January 1990

17. PROPOSED CASING AND CEMENT PROGRAM

SIZE OF HOLE	SIZE OF CASING	WEIGHT PER FOOT	SETTING DEPTH	SACKS OF CEMENT	EST. TOP
12-1/4"	8-5/8"	24#	420'	250	surface
7-7/8"	5-1/2"	15.5 & 17#	3900'	1000	surface

The Queen zone will be selectively perforated and acidized as needed for optimum water injectivity rates.

Texaco Producing, Inc. operates the West Dollarhide Drinkard Unit #44, also located in this quarter quarter section.

IN ABOVE SPACE DESCRIBE PROPOSED PROGRAM: IF PROPOSAL IS TO DEEPEN OR PLUG BACK, GIVE DATA ON PRESENT PRODUCTIVE ZONE AND PROPOSED NEW PRODUCTIVE ZONE. GIVE BLOWOUT PREVENTER PROGRAM, IF ANY.

I hereby certify that the information above is true and complete to the best of my knowledge and belief.

SIGNATURE

Bonnie Ottwater

TITLE

Production Technician

DATE

1-10-90

TYPE OR PRINT NAME

TELEPHONE NO.

(This space for State Use)

ORIGINAL SIGNED BY JERRY SEXTON
DISTRICT I SUPERVISOR

APPROVED BY

TITLE

DATE

CONDITIONS OF APPROVAL, IF ANY:

NAL-2488 + WEX-570

Permit Expires 6 Months From Approval
Date Unless Drilling Underway.

JAN 19 1990

**MEXICO OIL CONSERVATION COMMISSION
WELL LOCATION AND ACREAGE DEDICATION PLAT**

Form C-102
Supersedes C-128
Effective 1-1-65

All distances must be from the outer boundaries of the Section.

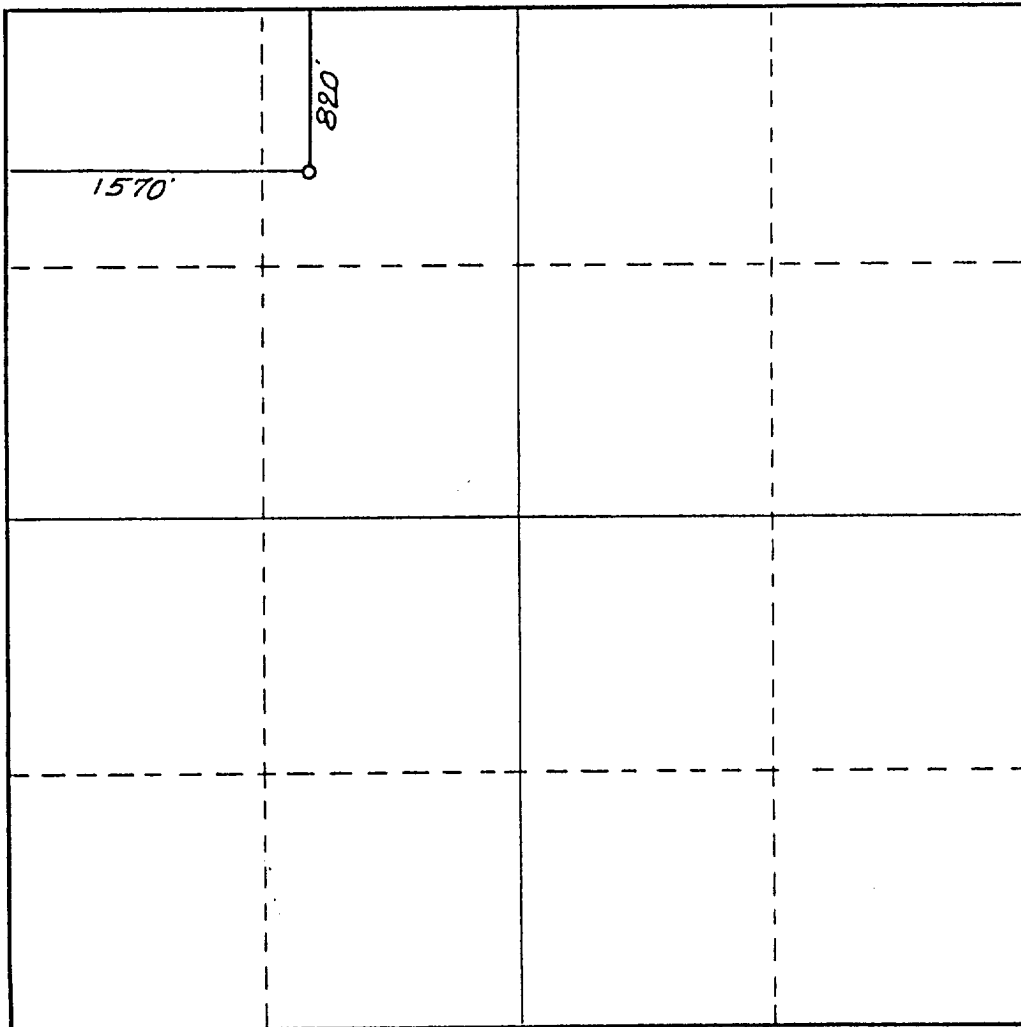
Operator Sirgo Operating, Inc.			Lease West Dollarhide Queen Sand Unit		Well No. 110
Unit Letter C	Section 32	Township 24 South	Range 38 East	County Lea County, N.M.	
Actual Footage Location of Well: <div style="display: flex; justify-content: space-between;"> 1570 feet from the West line and 820 feet from the North line </div>					
Ground Level Elev. 3174.	Producing Formation Queen		Pool Dollarhide Queen		Dedicated Acreage: 40 Acres

1. Outline the acreage dedicated to the subject well by colored pencil or hachure marks on the plat below.
2. If more than one lease is dedicated to the well, outline each and identify the ownership thereof (both as to working interest and royalty).
3. If more than one lease of different ownership is dedicated to the well, have the interests of all owners been consolidated by communitization, unitization, force-pooling, etc?

☒ Yes ☐ No If answer is "yes," type of consolidation Unitization, R-2356

If answer is "no," list the owners and tract descriptions which have actually been consolidated. (Use reverse side of this form if necessary.) _____

No allowable will be assigned to the well until all interests have been consolidated (by communitization, unitization, forced-pooling, or otherwise) or until a non-standard unit, eliminating such interests, has been approved by the Commission.



CERTIFICATION

I hereby certify that the information contained herein is true and complete to the best of my knowledge and belief.

Bonnie Atwater

Name

Bonnie Atwater

Position

Production Technician

Company

Sirgo Operating, Inc.

Date

1-10-90

Date Surveyed

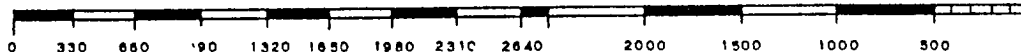
February 23, 1988

Registered Professional Engineer
and/or Land Surveyor

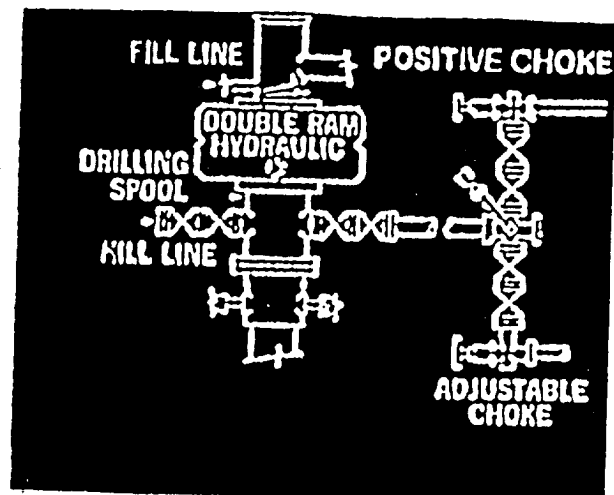
R. R. Reddy

Certificate No.

NM PE&LS NO. 5412



BOP



RECEIVED

JAN 11 1990

OCB
MOBBS OFFICE