

Submit to Appropriate  
District Office  
State Lease - 6 copies  
Fee Lease - 5 copies

State of New Mexico  
Energy, Minerals and Natural Resources Department

Form C-101  
Revised 1-1-89

OIL CONSERVATION DIVISION

DISTRICT I  
P.O. Box 1980, Hobbs, NM 88240

P.O. Box 2088  
Santa Fe, New Mexico 87504-2088

DISTRICT II  
P.O. Drawer DD, Artesia, NM 88210

DISTRICT III  
1000 Rio Brazos Rd., Aztec, NM 87410

API NO. (assigned by OCD on New Wells)

30-025-30297

5. Indicate Type of Lease

STATE ☒

FEE ☐

6. State Oil & Gas Lease No.  
B-9311

APPLICATION FOR PERMIT TO DRILL, DEEPEN, OR PLUG BACK

1a. Type of Work:

DRILL ☒

RE-ENTER ☐

DEEPEN ☐

PLUG BACK ☐

b. Type of Well:

OIL  
WELL ☐

GAS  
WELL ☐

OTHER

Water Injection

SINGLE  
ZONE ☒

MULTIPLE  
ZONE ☐

7. Lease Name or Unit Agreement Name

West Dollarhide Queen Sand  
Unit

2. Name of Operator

Sirgo Operating, Inc.

8. Well No.

140

3. Address of Operator

P.O. Box 3531, Midland, Texas 79702

9. Pool name or Wildcat

Dollarhide Queen

4. Well Location

Unit Letter EK : 2150 Feet From The South Line and 1425 Feet From The West Line

Section 32

Township 24S

Range 38E

NMPM

Lea

County

10. Proposed Depth  
3900'

11. Formation  
Queen

12. Rotary or C.T.  
Rotary

13. Elevations (Show whether DF, RT, GR, etc.)  
3157' GR

14. Kind & Status Plug. Bond  
Cash Statewide

15. Drilling Contractor  
Peterson

16. Approx. Date Work will start  
January 1990

PROPOSED CASING AND CEMENT PROGRAM

SIZE OF HOLE	SIZE OF CASING	WEIGHT PER FOOT	SETTING DEPTH	SACKS OF CEMENT	EST. TOP
12-1/4"	8-5/8"	24#	420'	250	Surface
7-7/8"	5-1/2"	15.5 & 17#	3900'	1000	Surface

The Queen zone will be selectively perforated and acidized as needed for optimum water injectivity rates.

Texaco Producing, Inc. operates the West Dollarhide Drinkard Unit ~~#63~~ <sup>#62</sup>, and the Mexico ~~UJ~~ <sup>UJ</sup> #5, also located in this quarter quarter section.

IN ABOVE SPACE DESCRIBE PROPOSED PROGRAM: IF PROPOSAL IS TO DEEPEN OR PLUG BACK, GIVE DATA ON PRESENT PRODUCTIVE ZONE AND PROPOSED NEW PRODUCTIVE ZONE. GIVE BLOWOUT PREVENTER PROGRAM, IF ANY.

I hereby certify that the information above is true and complete to the best of my knowledge and belief.

SIGNATURE Bonnie Ottwater TITLE Production Technician DATE 1-16-90

TYPE OR PRINT NAME

TELEPHONE NO

(This space for State Use)

ORIGINAL SIGNED BY JERRY SEXTON  
DISTRICT I SUPERVISOR

APPROVED BY \_\_\_\_\_ TITLE \_\_\_\_\_ DATE \_\_\_\_\_

CONDITIONS OF APPROVAL, IF ANY:

Permit Expires 6 Months From Approval  
Date Unless Drilling Underway.

782 2488A

FEB 05 1990

RECEIVED

JAN 17 1990

OCD  
HOBBS OFFICE

**N. MEXICO OIL CONSERVATION COMMISS**  
**WELL LOCATION AND ACREAGE DEDICATION PLAT**

Form C-102  
 Supersedes C-128  
 Effective 1-1-65

All distances must be from the outer boundaries of the Section.

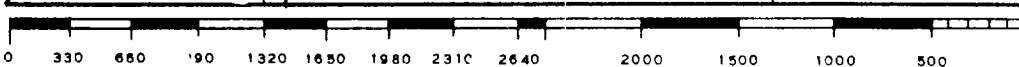
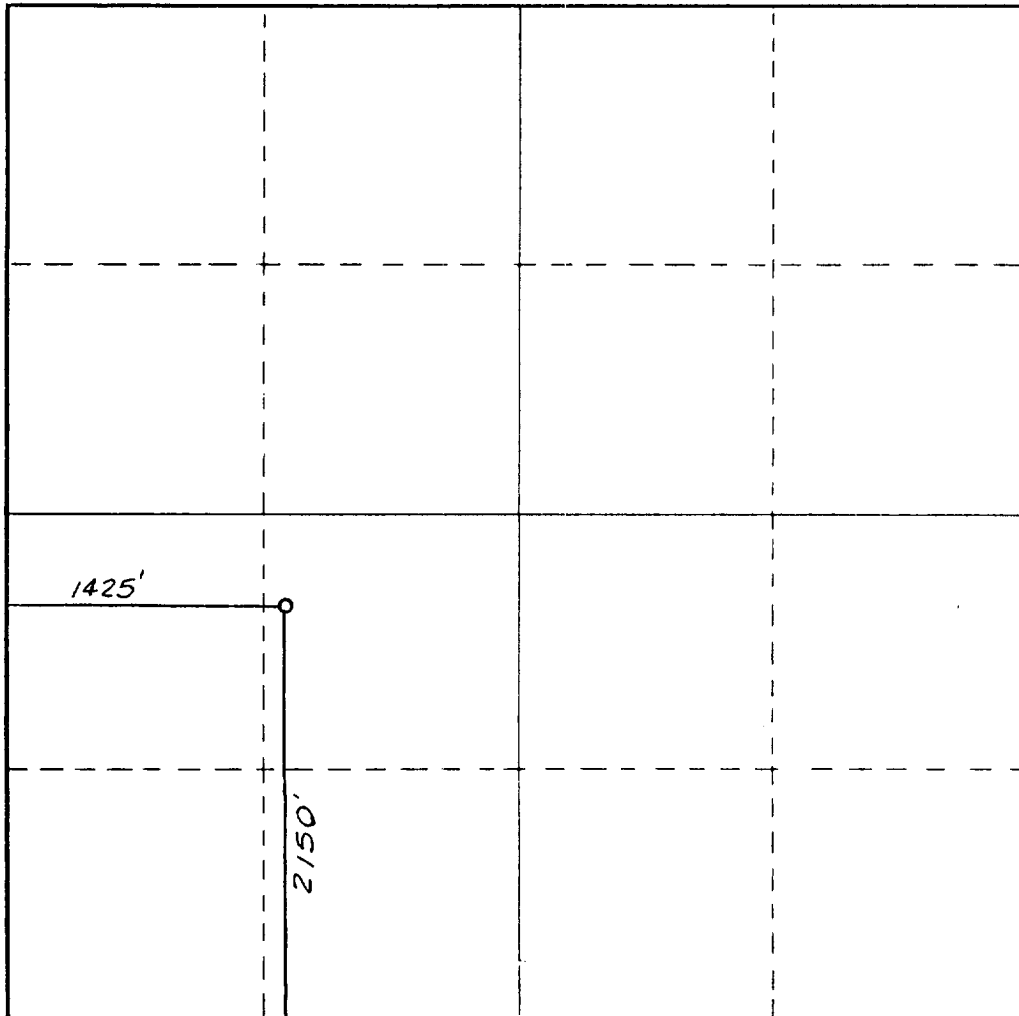
Operator <b>SIRGO OPERATING, INC.</b>			Lease <b>West Dollarhide Queen Sand Unit</b>		Well No. <b>140</b>
Unit Letter <b>K</b>	Section <b>32</b>	Township <b>24 South</b>	Range <b>38 East</b>	County <b>Lea County, N.M.</b>	
Actual Footage Location of Well: <b>2150</b> feet from the <b>South</b> line and <b>1425</b> feet from the <b>West</b> line					
Ground Level Elev. <b>3158.</b>	Producing Formation <b>Queen</b>		Pool <b>Dollarhide Queen</b>		Dedicated Acreage: <b>40</b> Acres

1. Outline the acreage dedicated to the subject well by colored pencil or hachure marks on the plat below.
2. If more than one lease is dedicated to the well, outline each and identify the ownership thereof (both as to working interest and royalty).
3. If more than one lease of different ownership is dedicated to the well, have the interests of all owners been consolidated by communitization, unitization, force-pooling, etc?

☒ Yes    ☐ No    If answer is "yes," type of consolidation Unitization, R-2356

If answer is "no," list the owners and tract descriptions which have actually been consolidated. (Use reverse side of this form if necessary.) \_\_\_\_\_

No allowable will be assigned to the well until all interests have been consolidated (by communitization, unitization, forced-pooling, or otherwise) or until a non-standard unit, eliminating such interests, has been approved by the Commission.



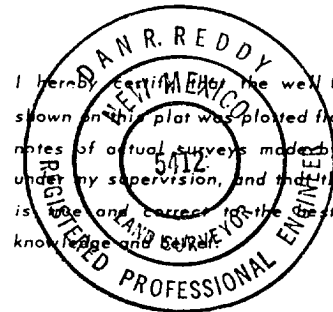
**CERTIFICATION**

I hereby certify that the information contained herein is true and complete to the best of my knowledge and belief.

*Bonnie Atwater*

Name  
**Bonnie Atwater**  
 Position  
**Production Technician**  
 Company  
**Sirgo Operating, Inc.**  
 Date  
**1-16-90**

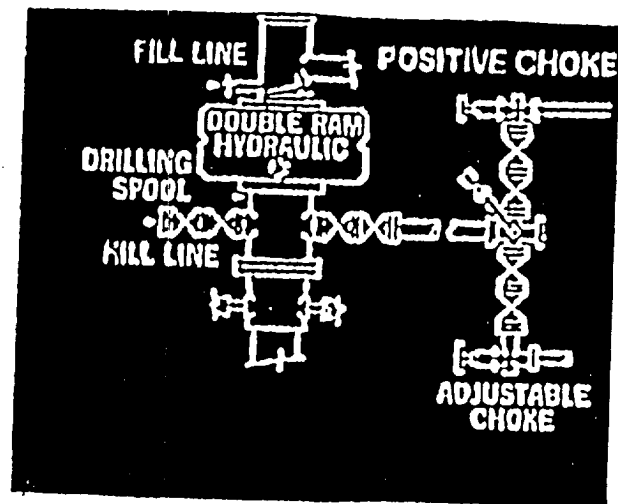
I hereby certify that the well location shown on this plat was plotted from field notes of actual surveys made by me or under my supervision, and that the same is true and correct to the best of my knowledge and belief.



Date Surveyed  
**January 11, 1990**  
 Registered Professional Engineer and/or Land Surveyor

*Dan R. Reddy*  
 Certificate No.  
**NM PE&PS NO. 5412**

# BOP



RECEIVED

JAN 17 1990

OCD  
HOBBS OFFICE