

NEW MEXICO OIL CONSERVATION COMMISSION
WELL LOCATION AND ACREAGE DEDICATION PLAT

Form C-102
Supersedes C-128
Effective 1-1-65

All distances must be from the outer boundaries of the Section.

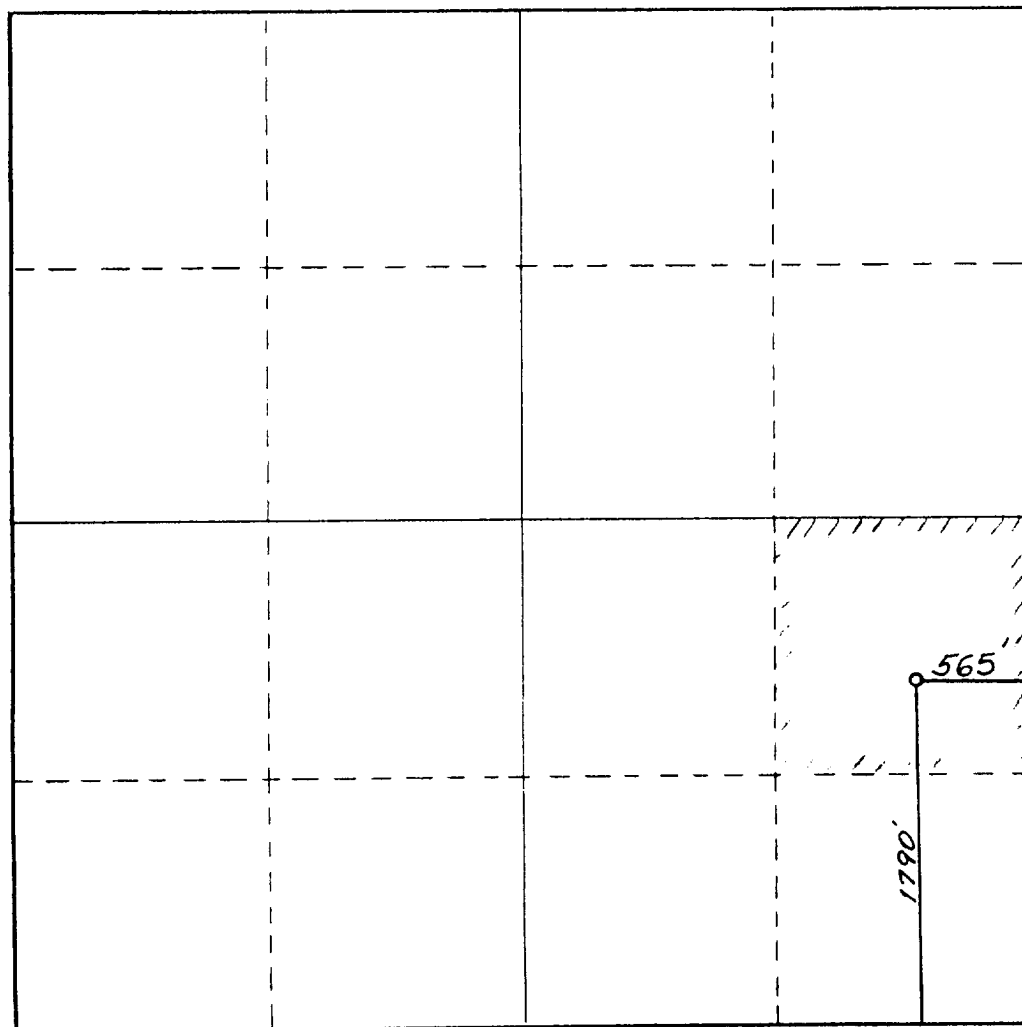
Operator SIRGO-COLLIER, INC.		Lease WDQSU (West Dollarhide Queen Sand Unit)		Well No. 152
Unit Letter I	Section 30	Township 24 South	Range 38 East	County Lea County, N.M.
Actual Footage Location of Well: 1790 feet from the South line and 565 feet from the East line				
Ground Level Elev. 3168.	Producing Formation Queen	Pool Dollarhide Queen	Dedicated Acreage: 40 Acres	

1. Outline the acreage dedicated to the subject well by colored pencil or hachure marks on the plat below.
2. If more than one lease is dedicated to the well, outline each and identify the ownership thereof (both as to working interest and royalty).
3. If more than one lease of different ownership is dedicated to the well, have the interests of all owners been consolidated by communitization, unitization, force-pooling, etc?

☒ Yes ☐ No If answer is "yes," type of consolidation Unitization, R-2356

If answer is "no," list the owners and tract descriptions which have actually been consolidated. (Use reverse side of this form if necessary.)

No allowable will be assigned to the well until all interests have been consolidated (by communitization, unitization, forced-pooling, or otherwise) or until a non-standard unit, eliminating such interests, has been approved by the Commission.



CERTIFICATION

I hereby certify that the information contained herein is true and complete to the best of my knowledge and belief.

Amy L. Whitley
Name

Amy L. Whitley
Position

Agent

Sirgo-Collier, Inc.
Company

March 9, 1988
Date

I hereby certify that the well location shown on this plat was plotted from field notes of actual surveys made by me or under my supervision and that the same is true and correct to the best of my knowledge and belief.

February 25, 1988
Date Surveyed

Registered Professional Engineer and/or Land Surveyor

Dan R. Reddy
Certificate No.

NM PE&LS NO. 5412

RECEIVED

APR 21 1988
OCC
HOBBS OFFICE