

DISTRICT I

P.O. Box 1980, Hobbs, NM 88241-1980

DISTRICT II

P.O. Box Drawer DD, Artesia, NM 88211-0719

DISTRICT III

1000 Rio Brazos Rd., Aztec, NM 87410

DISTRICT IV

P.O. Box 2088, Santa Fe, NM 87504-2088

State of New Mexico

Energy, Minerals and Natural Resources Department

Form C-101

Revised February 10, 1999

Instructions on back

Submit to Appropriate District Office

State Lease - 6 Copies

Fee Lease - 5 Copies

☐ AMENDED REPORT

OIL CONSERVATION DIVISION

P.O. Box 2088

Santa Fe, New Mexico 87504-2088

APPLICATION FOR PERMIT TO DRILL, RE-ENTER, DEEPEN, PLUGBACK, OR ADD A ZONE

¹ Operator Name and Address TEXACO EXPLORATION & PRODUCTION INC. 15 SMITH ROAD, MIDLAND, TX 79705		² OGRID Number 022351
⁴ Property Code 010926	⁵ Property Name WEST DOLLARHIDE DRINKARD UNIT	³ API Number 30 025 30826
		⁶ Well No. 104

⁷ Surface Location

Ul or lot no.	Section	Township	Range	Lot. Idn	Feet From The	North/South Line	Feet From The	East/West Line	County
J	32	24S	38E		2541	SOUTH	1380	EAST	LEA

⁸ Proposed Bottom Hole Location If Different From Surface

Ul or lot no.	Section	Township	Range	Lot. Idn	Feet From The	North/South Line	Feet From The	East/West Line	County
K	32	24S	38E		2271	SOUTH	1820	WEST	LEA
⁹ Proposed Pool 1 DOLLARHIDE TUBB DRINKARD					¹⁰ Proposed Pool 2				

¹¹ Work Type Code P <i>Horizontal</i>	¹² Well Type Code O	¹³ Rotary or C.T. ROTARY	¹⁴ Lease Type Code S	¹⁵ Ground Level Elevation
¹⁶ Multiple No	¹⁷ Proposed Depth 8546	¹⁸ Formation DRINKARD	¹⁹ Contractor	²⁰ Spud Date 6/25/2002

²¹ Proposed Casing and Cement Program

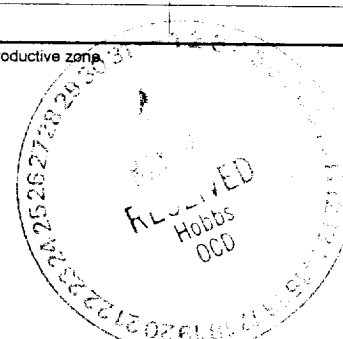
SIZE OF HOLE	SIZE OF CASING	WEIGHT PER FOOT	SETTING DEPTH	SACKS OF CEMENT	EST. TOP
NO CHANGE					

22 Describe the proposed program. If this application is to DEEPEN or PLUG BACK give the data on the present productive zone and proposed new productive zone.
Describe the blowout prevention program, if any. Use additional sheets if necessary.

TEXACO E&P INTENDS TO DRILL A HORIZONTAL LATERAL IN THE SUBJECT WELL

KICK OFF POINT - 6346'
TOP OF WINDOW - 6341
BOTTOM OF WINDOW - 6351

Permit Expires 1 Year From Approval
Date Unless *Drilling Underway*
Horizontal



23 I hereby certify that the rules and regulations of the Oil Conservation Division have been complied with and that the information given above is true and complete to the best of my knowledge and belief.

Signature *J. Denise Leake*

Printed Name J. Denise Leake

Title Regulatory Specialist

Date 5/22/2002

Telephone 915-687-7375

OIL CONSERVATION DIVISION

Approved By:

PAUL T. REED
PETROLEUM ENGINEER

Title:

Approval Date JUN 06 2002

Expiration Date:

Conditions of Approval:

Attached ☐

DISTRICT I

P.O. Box 1980, Hobbs, NM 88241-1980

DISTRICT II

P.O. Box Drawer DD, Artesia, NM 88211-0719

DISTRICT III

1000 Rio Brazos Rd., Aztec, NM 87410

DISTRICT IV

P.O. Box 2088 Santa Fe, NM 87504-2088

State of New Mexico

Energy, Minerals and Natural Resources Department

Form C-102

Revised February 10, 1999

Instructions on back

Submit to Appropriate District Office

State Lease - 4 Copies

Fee Lease - 3 Copies

☐ AMENDED REPORT**OIL CONSERVATION DIVISION**

P.O. Box 2088

Santa Fe, New Mexico 87504-2088

WELL LOCATION AND ACREAGE DEDICATION PLAT

¹ API Number 30 025 3C 826	² Pool Code 18830	³ Pool Name DOLLARHIDE TUBB DRINKARD
⁴ Property Code 010926	⁵ Property Name WEST DOLLARHIDE DRINKARD UNIT	
⁷ OGRID Number 022351	⁸ Operator Name TEXACO EXPLORATION & PRODUCTION INC.	⁶ Well No. 104
		⁹ Elevation

¹⁰ Surface Location

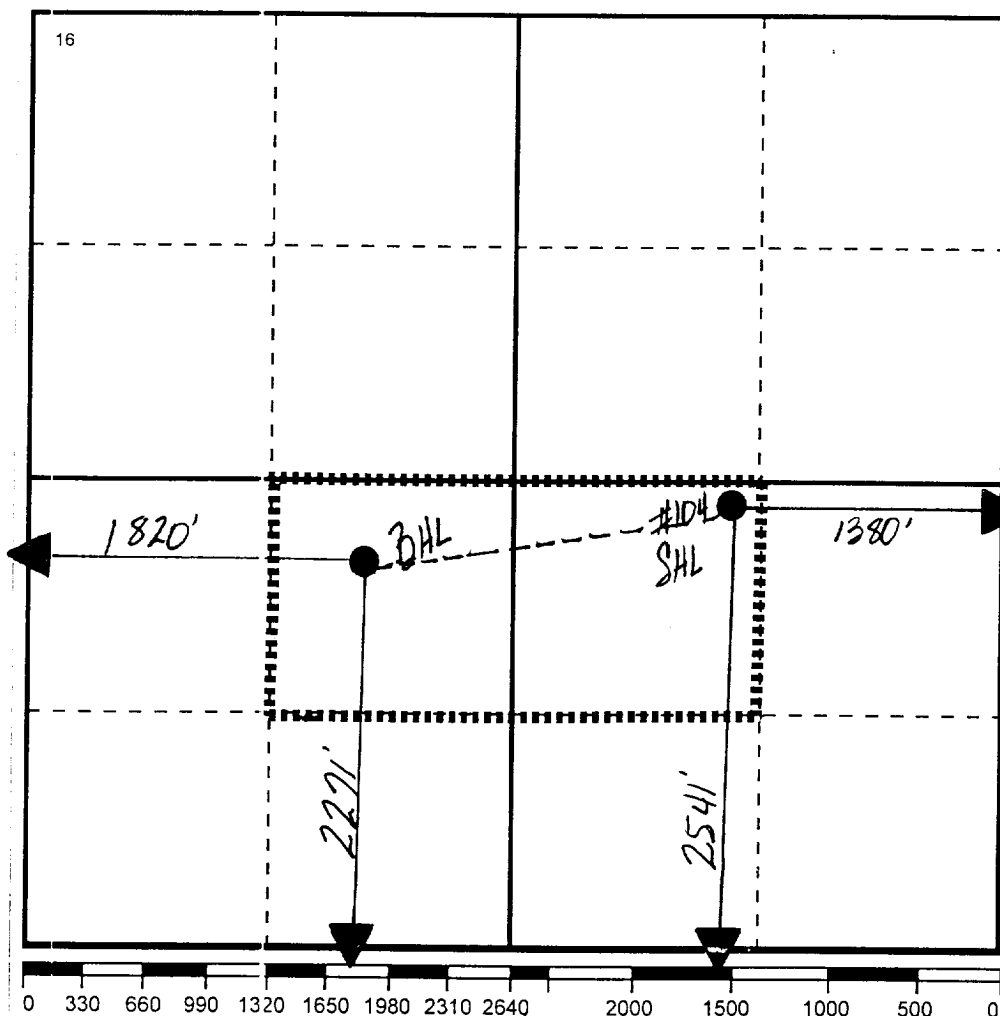
UI or lot no	Section	Township	Range	Lot. Idn	Feet From The	North/South Line	Feet From The	East/West Line	County
J	32	24S	38E		2541	SOUTH	1380	EAST	LEA

¹¹ Bottom Hole Location If Different From Surface

UI or lot no.	Section	Township	Range	Lot. Idn	Feet From The	North/South Line	Feet From The	East/West Line	County
K	32	24S	38E		2271	SOUTH	1820	WEST	LEA

¹² Dedicated Acre 80	¹³ Joint or Infill No	¹⁴ Consolidation Code	¹⁵ Order No.
------------------------------------	-------------------------------------	----------------------------------	-------------------------

NO ALLOWABLE WILL BE ASSIGNED TO THIS COMPLETION UNTIL ALL INTERESTS HAVE BEEN CONSOLIDATED
OR A NON-STANDARD UNIT HAS BEEN APPROVED BY THE DIVISION

**17 OPERATOR CERTIFICATION**

I hereby certify that the information contained herein is true and complete to the best of my knowledge and belief

Signature

J. Denise Leake

Printed Name

J. Denise Leake

Position

Regulatory Specialist

Date

5/22/2002

18 SURVEYOR CERTIFICATION

I hereby certify that the well location shown on this plat was plotted from field notes of actual surveys made by me or under my supervision, and that the same is true and correct to the best of my knowledge and belief.

Date Surveyed

Signature & Seal of

Professional Surveyor

Certificate No.

Data for Lea County, New Mexico

West Dolarhide Drinkard Unit

0 2,790 5,580

FEET

POSTED WELL DATA

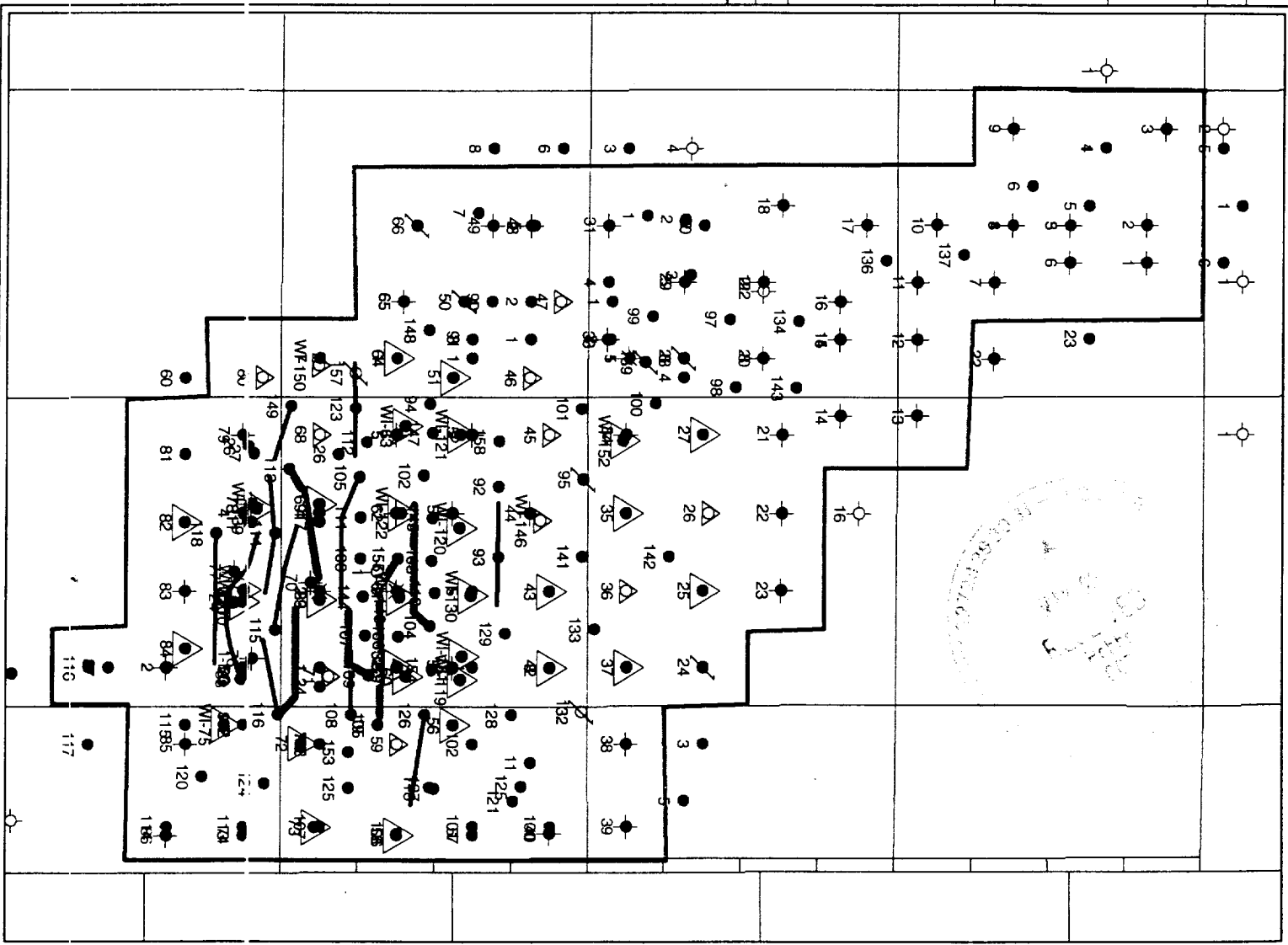
Well Number

WELL SYMBOLS

- Oil Well
- Gas Well
- Dry Hole
- Active Injection Well
- Shut-in Oil Producer
- Temp Abandoned
- Plugged and Abandoned
- Shut-in Injection Well

By: Cynthia L. Welch

May 17, 2002



Data for Lea County, New Mexico

West Dollahide Drinkard Unit

Proposed Horizontal Locations

0 1,736 3,472

FEET

POSTED WELL DATA

Well Number

WELL SYMBOLS

- Oil Well
- ☼ Gas Well
- Dry Hole
- △ Active Injection Well
- △ Shut-in Oil Producer
- △ Temp Abandoned
- △ Plugged and Abandoned
- △ Shut-in Injection Well

By: Cynthia L. Welch

May 17, 2002

