

DISTRICT II

P.O. Box Drawer DD, Artesia, NM 88211-0719

DISTRICT III

1000 Rio Brazos Rd., Aztec, NM 87410

DISTRICT IV

P.O. Box 2088, Santa Fe, NM 87504-2088

OIL CONSERVATION DIVISION

P.O. Box 2088

Santa Fe, New Mexico 87504-2088

Revised February 10, 1999

Instructions on back

Submit to Appropriate District Office

State Lease - 6 Copies

Fee Lease - 5 Copies

☐ AMENDED REPORT

APPLICATION FOR PERMIT TO DRILL, RE-ENTER, DEEPEN, PLUGBACK, OR ADD A ZONE

<sup>1</sup> Operator Name and Address TEXACO EXPLORATION & PRODUCTION INC. 15 SMITH ROAD, MIDLAND, TX 79705		<sup>2</sup> OGRID Number 022351
		<sup>3</sup> API Number 30 025 30827
<sup>4</sup> Property Code 10926	<sup>5</sup> Property Name WEST DOLLARHIDE DRINKARD UNIT	<sup>6</sup> Well No. 105

<sup>7</sup> Surface Location

UI or lot no	Section	Township	Range	Lot.Idn	Feet From The	North/South Line	Feet From The	East/West Line	County
K	32	24S	38E		1347	SOUTH	1373	WEST	LEA

<sup>8</sup> Proposed Bottom Hole Location If Different From Surface

UI or lot no	Section	Township	Range	Lot.Idn	Feet From The	North/South Line	Feet From The	East/West Line	County
J	32	24S	38E		1632	SOUTH	1757	EAST	LEA

<sup>9</sup> Proposed Pool 1 DOLLARHIDE TUBB DRINKARD Abo	<sup>10</sup> Proposed Pool 2
--------------------------------------------------------------	-------------------------------

<sup>11</sup> Work Type Code: P (Horizontal)	<sup>12</sup> Well Type Code O	<sup>13</sup> Rotary or C.T.	<sup>14</sup> Lease Type Code S	<sup>15</sup> Ground Level Elevation 3177'
<sup>16</sup> Multiple No	<sup>17</sup> Proposed Depth 8561'	<sup>18</sup> Formation DRINKARD	<sup>19</sup> Contractor	<sup>20</sup> Spud Date 3/5/02

<sup>21</sup> Proposed Casing and Cement Program

SIZE OF HOLE	SIZE OF CASING	WEIGHT PER FOOT	SETTING DEPTH	SACKS OF CEMENT	EST. TOP
NO CHANGE					

<sup>22</sup> Describe the proposed program. If this application is to DEEPEN or PLUG BACK give the data on the present productive zone and proposed new productive zone. Describe the blowout prevention program, if any. Use additional sheets if necessary.

TEXACO INTENDS TO DRILL A HORIZONTAL LATERAL IN THE SUBJECT WELL:

KICK OFF POINT: 6311'

TOP OF WINDOW: 6306'

BOTTOM OF WINDOW: 6316'

PENETRATION POINT: 6370'

MAPS ATTACHED

Permit Expires 1 Year From Approval  
Date Unless Drilling Underway

<sup>23</sup> I hereby certify that the rules and regulations of the Oil Conservation Division have been complied with and that the information given above is true and complete to the best of my knowledge and belief.		OIL CONSERVATION DIVISION	
Signature <i>J. Denise Leake</i>			
Printed Name J. Denise Leake		Approved By: <i>PAUL F. KAUTZ</i> PETROLEUM ENGINEER	
Title Regulatory Specialist		Title:	
Date 2/14/02		Approval Date:	Expiration Date:
Telephone 915-687-7375		Conditions of Approval: Attached 10926 2002	

J  
C  
A

DISTRICT I

P.O. Box 1980, Hobbs, NM 88241-1980

DISTRICT II

P.O. Box Drawer DD, Artesia, NM 88211-0719

DISTRICT III

1000 Rio Brazos Rd., Aztec, NM 87410

DISTRICT IV

P.O. Box 2088, Santa Fe, NM 87504-2088

State of New Mexico

Energy, Minerals and Natural Resources Department

## OIL CONSERVATION DIVISION

P.O. Box 2088

Santa Fe, New Mexico 87504-2088

Form C-102

Revised February 10, 1999

Instructions on back

Submit to Appropriate District Office

State Lease - 4 Copie

Fee Lease - 3 Copie

☐ AMENDED REPORT

## WELL LOCATION AND ACREAGE DEDICATION PLAT

<sup>1</sup> API Number 30 025 30827	<sup>2</sup> Pool Code 18830	<sup>3</sup> Pool Name DOLLARHIDE TUBB DRINKARD <i>ABO</i>
<sup>4</sup> Property Code <i>10926</i>	<sup>5</sup> Property Name WEST DOLLARHIDE DRINKARD UNIT	
<sup>7</sup> OGRID Number 022351	<sup>8</sup> Operator Name TEXACO EXPLORATION & PRODUCTION INC.	<sup>6</sup> Well No. 105 <i>H</i>
		<sup>9</sup> Elevation 3177'

<sup>10</sup> Surface Location

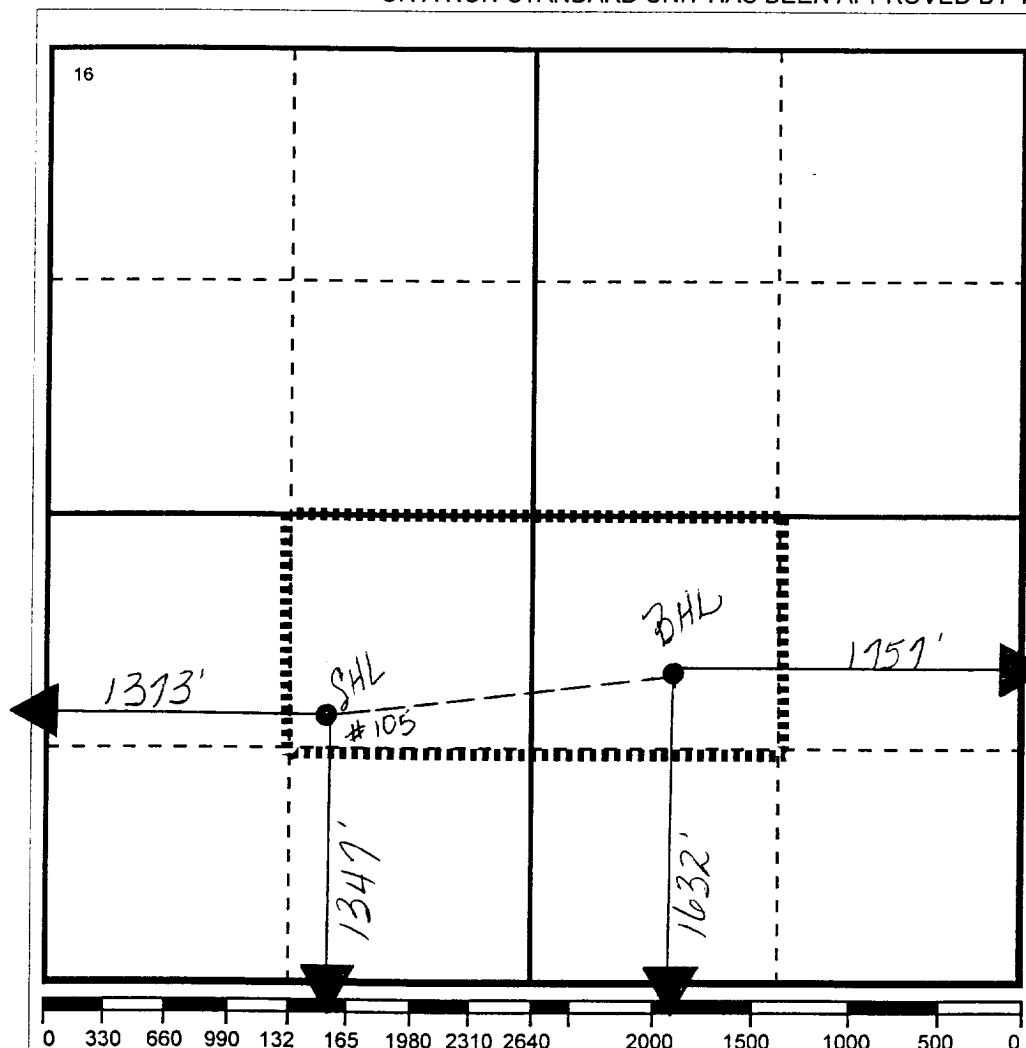
UI or lot no	Section	Township	Range	Lot.Idn	Feet From The	North/South Line	Feet From The	East/West Line	County
K	32	24S	38E		1347	SOUTH	1373	WEST	LEA

<sup>11</sup> Bottom Hole Location If Different From Surface

UI or lot no	Section	Township	Range	Lot.Idn	Feet From The	North/South Line	Feet From The	East/West Line	County
<i>J</i>	32	24S	38E		1632	SOUTH	1757	EAST	LEA

<sup>12</sup> Dedicated Acre <i>80</i>	<sup>13</sup> Joint or Infill No	<sup>14</sup> Consolidation Code	<sup>15</sup> Order No.
-------------------------------------------	-------------------------------------	----------------------------------	-------------------------

NO ALLOWABLE WILL BE ASSIGNED TO THIS COMPLETION UNTIL ALL INTERESTS HAVE BEEN CONSOLIDATED  
OR A NON-STANDARD UNIT HAS BEEN APPROVED BY THE DIVISION

<sup>17</sup> OPERATOR CERTIFICATION

I hereby certify that the information contained herein is true and complete to the best of my knowledge and belief

Signature

Printed Name

J. Denise Leake

Positio

Regulatory Specialist

Date

2/14/02

<sup>18</sup> SURVEYOR CERTIFICATION

I hereby certify that the well location shown on this plat was plotted from field notes of actual surveys made by me or under my supervision, and that the same is true and correct to the best of my knowledge and belief.

Date Surveyed

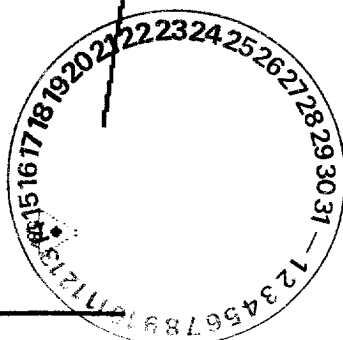
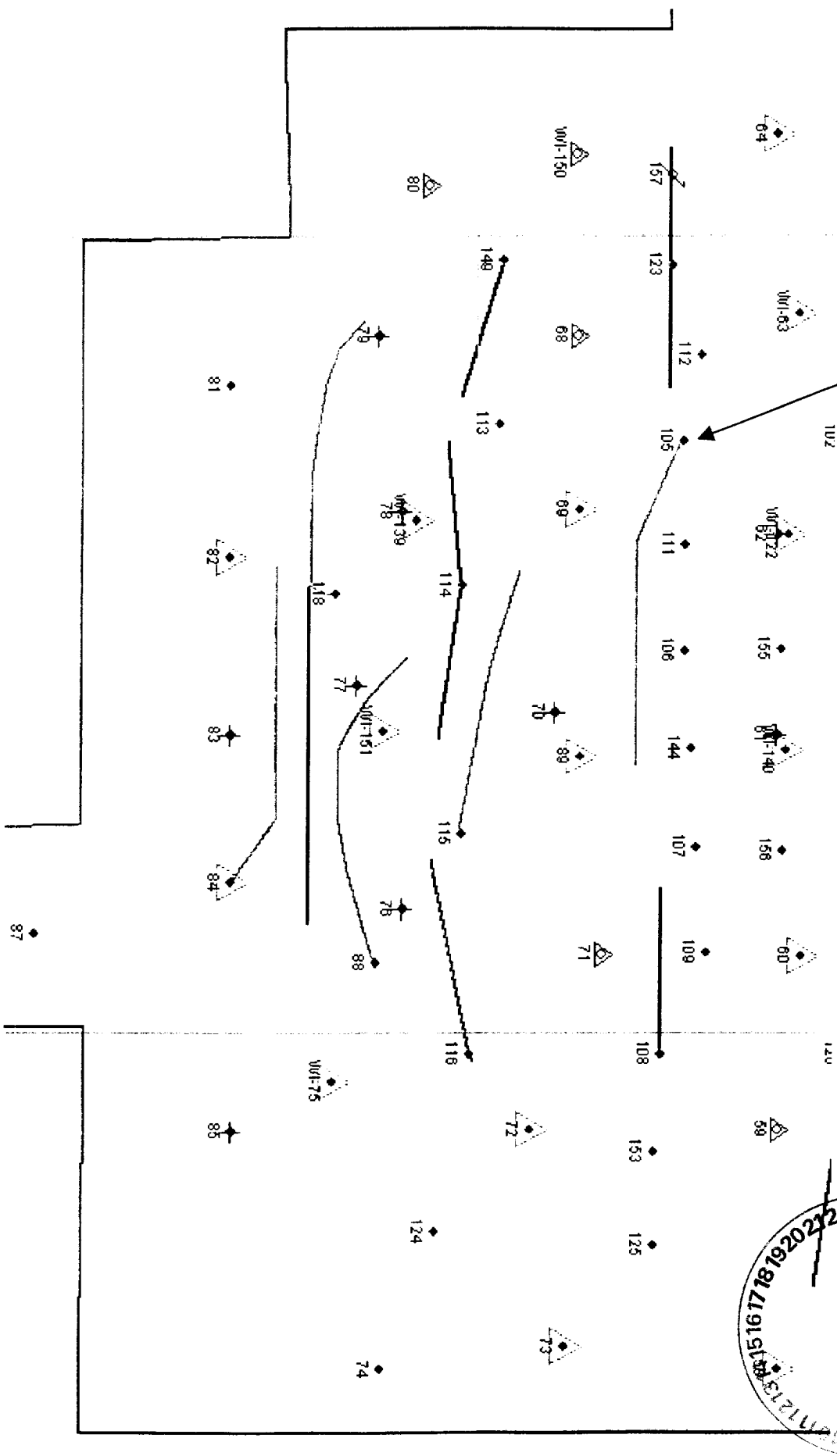
Signature & Seal of  
Professional Surveyor

Certificate No.

# West Dollarhide Drinkard Unit

Proposed well: 105

Shows all wells near 105 path



# West Dollarhide Drinkard Unit

