

Submit to Appropriate
District Office
State Lease - 6 copies
Fee Lease - 5 copies

State of New Mexico
Energy, Minerals and Natural Resources Department

Form C-101
Revised 1-1-89

OIL CONSERVATION DIVISION

DISTRICT I
P.O. Box 1980, Hobbs, NM 88240

P.O. Box 2088
Santa Fe, New Mexico 87504-2088

DISTRICT II
P.O. Drawer DD, Artesia, NM 88210

DISTRICT III
1000 Rio Brazos Rd., Aztec, NM 87410

API NO. (assigned by OCD on New Wells)

30-025-30827

5. Indicate Type of Lease

STATE ☒ FEE ☐

6. State Oil & Gas Lease No.

B-9613

APPLICATION FOR PERMIT TO DRILL, DEEPEN, OR PLUG BACK

1a. Type of Work:

DRILL ☒ RE-ENTER ☐ DEEPEN ☐ PLUG BACK ☐

b. Type of Well:

OIL WELL ☒ GAS WELL ☐ OTHER ☐

SINGLE ZONE ☒

MULTIPLE ZONE ☐

7. Lease Name or Unit Agreement Name

WEST DOLLAR HIDE
DRINKARD UNIT

2. Name of Operator

TEXACO PRODUCING INC.

8. Well No.

105

3. Address of Operator

P.O. Box 3109 MIDLAND, TEXAS 79702

9. Pool name or Wildcat

DOLLAR HIDE TUBB DRINKARD

4. Well Location

Unit Letter L Section 1411 Feet From The South Line and 1288 Feet From The West Line

Section

32

Township

24-SOUTH

Range

38-EAST

NMPM

LEA

County

10. Proposed Depth

6950'

11. Formation

DRINKARD

12. Rotary or C.T.

ROTARY

13. Elevations (Show whether DF, RT, GR, etc.)

GR- 3156'

14. Kind & Status Plug. Bond

BLANKET

15. Drilling Contractor

TO BE SELECTED

16. Approx. Date Work will start

3-31-90

17. PROPOSED CASING AND CEMENT PROGRAM

SIZE OF HOLE	SIZE OF CASING	WEIGHT PER FOOT	SETTING DEPTH	SACKS OF CEMENT	EST. TOP
20"	16"	65 #	40'	REDI MIX	SURFACE
14 3/4"	11 3/4"	42 #	1200'	1000 SX "H"	SURFACE
* 11"	8 5/8"	32 #	4000'	1650 SX "H"	SURFACE
7 7/8"	5 1/2"	17 # + 15.5 #	6950'	1300 SX WITH 8 5/8"	SURFACE

2575 SX WITHOUT 8 5/8"

CEMENTING PROGRAM ON BACK

*OPTIONAL - WILL BE SET IF HOLE CONDITIONS DICTATE.

SIRGO-COLLIER OPERATES A WELL IN THIS 1/4 1/4 SECTION AND HAS BEEN FURNISHED WITH A COPY OF THIS APPLICATION.

UNORTHODOX LOCATION - 10 ACRE SPACING.

IN ABOVE SPACE DESCRIBE PROPOSED PROGRAM: IF PROPOSAL IS TO DEEPEN OR PLUG BACK, GIVE DATA ON PRESENT PRODUCTIVE ZONE AND PROPOSED NEW PRODUCTIVE ZONE. GIVE BLOWOUT PREVENTER PROGRAM, IF ANY.

I hereby certify that the information above is true and complete to the best of my knowledge and belief.

SIGNATURE

C. Wade Howard

TITLE

ENGINEER'S ASSISTANT

DATE

3-8-90

TYPE OR PRINT NAME

C. WADE HOWARD

915 -

TELEPHONE NO. 688 - 4606

ORIGINAL SIGNED BY JERRY SEXTON

(This space for State Use)

DISTRICT I SUPERVISOR

APPROVED BY

TITLE

DATE

CONDITIONS OF APPROVAL, IF ANY:

MAR 21 1990

Permit Expires 6 Months From Approval
Date Unless Drilling Underway.

MSL-2768

CEMENTING PROGRAM

CONDUCTOR: REDIMIX

SURFACE CASING: 1000 SX CLASS 'H' WITH 2% CaCl_2 AT 15.6ppg, 1.19 ft³/sx, 5.2 GAL WTR/sx.

INTERMEDIATE CASING: 400 SX 35/65 POZ CLASS 'H' WITH 6% GEL, 5% SALT, 1/4# FLOCELE AT 12.8ppg, 1.87 ft³/sx, 9.9 GAL WTR/sx. FOLLOWED BY 200 SX CLASS 'H' WITH 2% CaCl_2 AT 15.6ppg, 1.19 ft³/sx, 5.2 GAL WTR/sx.

DV TOOL AT 2600': 2ND STAGE - 1050 SX CLASS 'H' WITH 2% CaCl_2 AT 15.6ppg, 1.19 ft³/sx, 5.2 GAL WTR/sx.

PRODUCTION CASING WITH 8 5/8" CASING: 1ST STAGE - 525 SX 35/65 POZ CLASS 'H' WITH 6% GEL, 5% SALT, 1/4# FLOCELE AT 12.8ppg, 1.87 ft³/sx, 9.9 GAL WTR/sx. FOLLOWED BY 200 SX CLASS 'H' AT 15.6ppg, 1.18 ft³/sx, 5.2 GAL WTR/sx.

DV TOOL AT 4000': 2ND STAGE - 575 SX 35/65 POZ CLASS 'H' WITH 6% GEL, 5% SALT, 1/4# FLOCELE AT 12.8ppg, 1.87 ft³/sx, 9.9 GAL WTR/sx.

PRODUCTION CASING WITHOUT 8 5/8" CASING: 1ST STAGE - 525 SX 35/65 POZ CLASS 'H' WITH 6% GEL, 5% SALT, 1/4# FLOCELE AT 12.8ppg, 1.87 ft³/sx, 9.9 GAL WTR/sx. FOLLOWED BY 200 SX CLASS 'H' AT 15.6ppg, 1.18 ft³/sx, 5.2 GAL WTR/sx.

DV TOOL AT 4000': 2ND STAGE - 1850 SX 35/65 POZ CLASS 'H' WITH 6% GEL, 5% SALT, 1/4# FLOCELE AT 12.8 ppg, 1.87 ft³/sx, 9.9 GAL WTR/sx.

RECEIVED

MAR 9 1990

OCD
HOBBS OFFICE

**NEW MEXICO OIL CONSERVATION COMMISSION
WELL LOCATION AND ACREAGE DEDICATION PLAT**

Form C-102
Supersedes C-128
Effective 1-1-65

All distances must be from the outer boundaries of the Section.

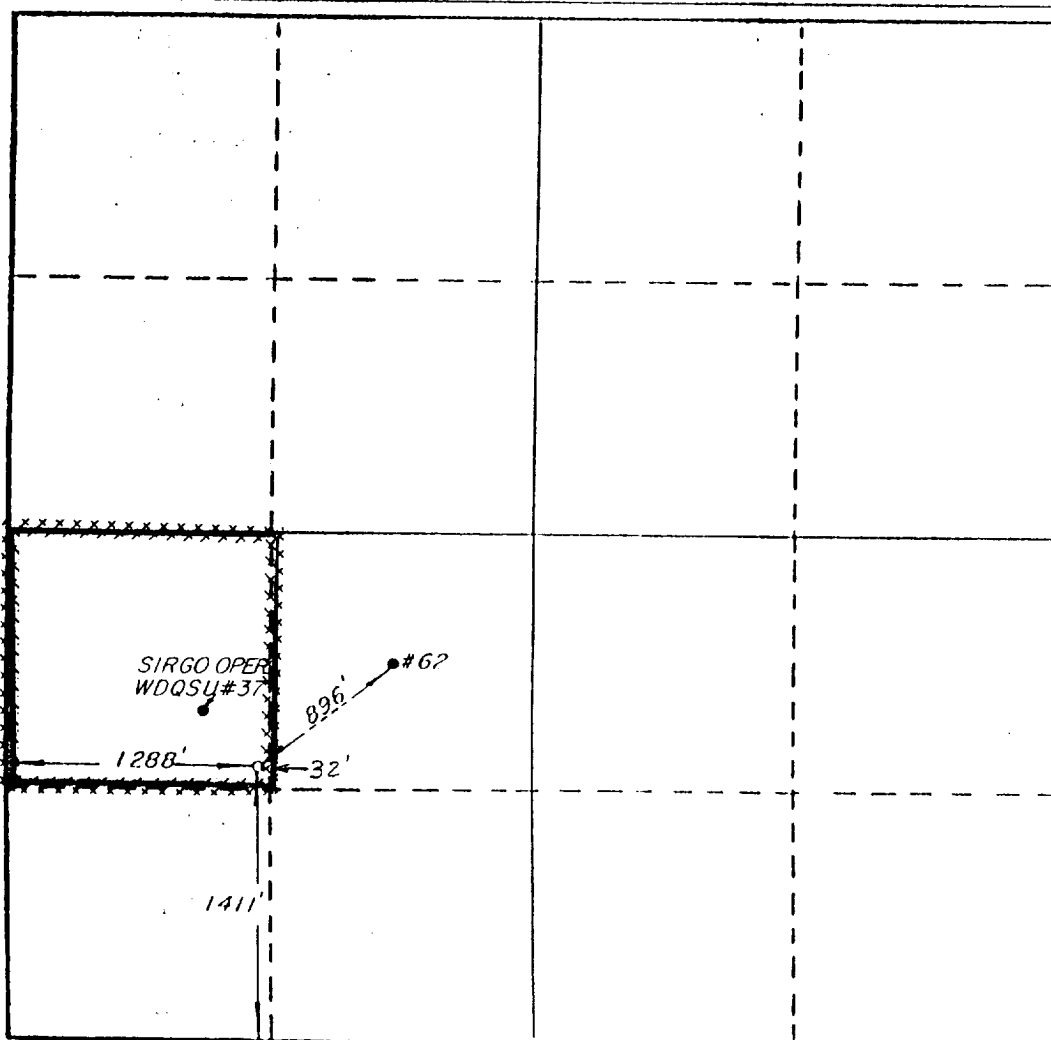
Operator TEXACO PRODUCING INC.			Lease West Dollarhide Drinkard Unit		Well No. 105
Unit Letter L	Section 32	Township 24-S	Range 38-E	County Lea	
Actual Footage Location of Well:					
1411 feet from the South line and		1288 feet from the West line			
Ground Level Elev. 3156'	Producing Formation Tubb Drinkard (Drinkard)		Pool Dollarhide Tubb Drinkard	Dedicated Acreage: 40 Acres	

1. Outline the acreage dedicated to the subject well by colored pencil or hachure marks on the plat below.
2. If more than one lease is dedicated to the well, outline each and identify the ownership thereof (both as to working interest and royalty).
3. If more than one lease of different ownership is dedicated to the well, have the interests of all owners been consolidated by communitization, unitization, force-pooling, etc?

☒ Yes ☐ No If answer is "yes," type of consolidation Unitization

If answer is "no," list the owners and tract descriptions which have actually been consolidated. (Use reverse side of this form if necessary.) _____

No allowable will be assigned to the well until all interests have been consolidated (by communitization, unitization, forced-pooling, or otherwise) or until a non-standard unit, eliminating such interests, has been approved by the Commission.



CERTIFICATION

I hereby certify that the information contained herein is true and complete to the best of my knowledge and belief.

Richard B. Duniven

Name

R. D. Mariott

Position

Division Surveyor

Company

Texaco Producing Inc.

Date

February 8, 1990

I hereby certify that the well location shown on this plat was plotted from field notes of actual surveys made by me or under my supervision, and that the same is true and correct to the best of my knowledge and belief.

FEBRUARY 8, 1990

Unit Surveyed

Richard B. Duniven

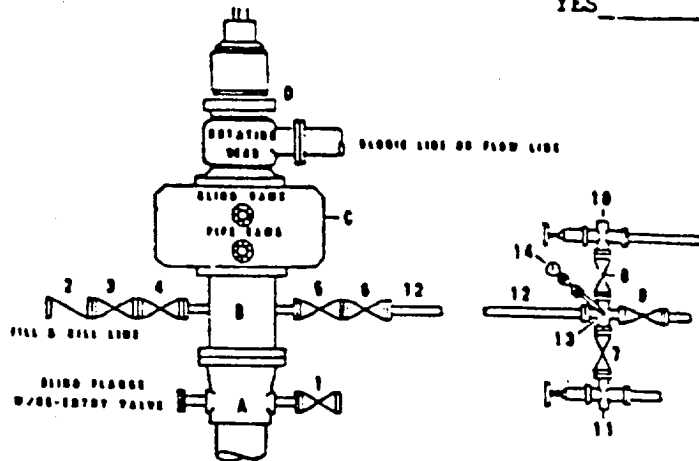
Registered Professional Engineer
and/or Land Surveyor

Richard B. Duniven

Certificate No.

DRILLING CONTROL
CONDITION II-B 3000 WP
FOR AIR DRILLING OR
WHERE YATES AIR BLOWS ARE EXPECTED

H₂S TRIM REQUIRED
 YES _____ NO _____



DRILLING CONTROL

MATERIAL LIST - CONDITION II - B
FOR AIR DRILLING

- A Texaco Wellhead
- 3 3000# W.P. drilling spool with a 2" minimum flanged outlet for kill-line and 3" minimum flanged outlet for choke line
- C 3000# W.P. Dual ram type preventer, hydraulic operated with 1" steel, 3000# W.P. control lines (where sub-structure height is adequate, 2-3000# W.P. single ram type preventers may be utilized.)
- D Rotating Head and extended Electric Line.
- 1,3,4, 7,8 2" minimum 3000# W.P. flanged full opening steel gate valve, or Halliburton Lo Torc Plug valve.
- 2 2" minimum 3000# W.P. back pressure valve
- 5,6,9 3" minimum 3000# W.P. flanged full opening steel gate valve, or Halliburton Lo Torc Plug valve.
- 12 3" minimum schedule 80, Grade "A", seamless line pipe
- 13 2" minimum x 3" minimum 3000# W.P. flanged cross
- 10, 11 2" minimum 3000# W.P. adjustable choke bodies
- 14 Cameron Mud Gauge or equivalent (location optional in choke line.)

<div style="display: inline-block; text-align: center;"> TEXACO, INC. <small>HOLLAND DIVISION HOLLAND, TEXAS</small> </div>				
SCALE	DATE	EST. NO.	DRG. NO.	
DRAWN BY				EXHIBIT C
CHECKED BY				
APPROVED BY				

16-8-4 8204

ELF

RECEIVED

MAR 9 1990

OCD
HARRIS OFFICE