

Form 3160-3

(July 1989)

(formerly 9-331CP)

P. O. BOX 1330 UNITED STATES

HOBBBS NEW MEXICO 88240

DEPARTMENT OF THE INTERIOR

BUREAU OF LAND MANAGEMENT

CONTACT RE/ NG
OFFICE FOR NL &
OF COPIES REQUIRED
(Other instructions on
reverse side)BLM Roswell District
Modified Form No.
NM060-3160-2

30-025-30878

APPLICATION FOR PERMIT TO DRILL, DEEPEN, OR PLUG BACK

1a. TYPE OF WORK

DRILL ☒DEEPEN ☐PLUG BACK ☐

b. TYPE OF WELL

OIL
WELL ☒GAS
WELL ☐

OTHER

SINGLE
ZONE ☒MULTIPLE
ZONE ☐

2. NAME OF OPERATOR

TEXACO PRODUCING INC.

3a. AREA CODE & PHONE NO.

915-688-4620

3. ADDRESS OF OPERATOR

P. O. Box 3109, Midland, Texas 79702

4. LOCATION OF WELL (Report location clearly and in accordance with any State requirements.)*

At surface

2436' FSL, 1330' EAST, UNIT LETTER J.

At proposed prod. zone

SAME

14. DISTANCE IN MILES AND DIRECTION FROM NEAREST TOWN OR POST OFFICE*

7 MILES NORTHEAST OF JAL, NM.

15. DISTANCE FROM PROPOSED*

LOCATION TO NEAREST
PROPERTY OR LEASE LINE, FT.
(Also to nearest drlg. unit line, if any)

2630'

16. NO. OF ACRES IN LEASE

3533.52

17. NO. OF ACRES ASSIGNED
TO THIS WELL

40

18. DISTANCE FROM PROPOSED LOCATION*
TO NEAREST WELL, DRILLING, COMPLETED,
OR APPLIED FOR, ON THIS LEASE, FT.

728'

19. PROPOSED DEPTH

6950'

20. ROTARY OR CABLE TOOLS

ROTARY

21. ELEVATIONS (Show Whether DF, RT, GR, ETC.)

GR-3168'

22. APPROX. DATE WORK WILL START *

04-20-90

23. PROPOSED CASING AND CEMENTING PROGRAM

HOLE SIZE	CASING SIZE	WEIGHT/FOOT	GRADE	THREAD TYPE	SETTING DEPTH	QUANTITY OF CEMENT
20	16	65#	H-40	PE	40'	BEDI-MIX
14 3/4	11 3/4	42#	H-40	ST&C	1200' CIRCULATE	4000 SX
* 11	8 5/8	32#	K-55	ST&C	4000'	1650 SX
7 7/8	5 1/2	17# & 15.5#	K-55	LT&C	6950'	*1300 OR 2575

* OPTIONAL - WILL BE SET IF HOLE CONDITIONS DICTATE.
CEMENTING PROGRAM ATTACHED.SIRGO-COLLIER OPERATES A WELL IN THE 1/4 1/4 SECTION AND HAS BEEN FURNISHED A COPY OF THIS APPLICATION.
UNORTHODOX LOCATION - 10 ACRE SPACING. ADMINISTRATIVE APPROVAL APPLIED FOR 3-20-90.APPROVAL SUBJECT TO
GENERAL REQUIREMENTS AND
SPECIAL STIPULATIONS
ATTACHEDIN ABOVE SPACE DESCRIBE PROPOSED PROGRAM: If proposal is to deepen or plug back, give data on present productive zone and proposed new productive zone.
If proposal is to drill or deepen directionally, give pertinent data on subsurface locations and measured and true vertical depths. Give blowout preventer program,
if any.

24.

SIGNED

C.P. Barker

TITLE

DRILLING SUPERINTENDENT

DATE

03-26-90

(This space for Federal or State office use)

PERMIT NO.

APPROVAL DATE

Orig. Signed by Richard L. Manus

APPROVED BY

TITLE

AREA MANAGER

DATE

CONDITIONS OF APPROVAL, IF ANY:

DARLAD RESOURCE AGENCY

4-17-96

MSL-2768A

*See Instructions On Reverse Side

TITLE 18 U.S.C. SECTION 1001, makes it a crime for any person knowingly and willfully to make to any department or agency of the United States any false,
fictitious or fraudulent statements or representations as to any matter within its jurisdiction.RECEIVED
MAR 20 10 58 AM '90
OFFICE OF THE
BUREAU OF LAND MANAGEMENT

INSTRUCTIONS

GENERAL: This form is designed for submitting proposals to perform certain well operations, as indicated, on all types of lands and leases for appropriate action by either a Federal or a State agency, or both, pursuant to applicable Federal and/or State laws and regulations. Any necessary special instructions concerning the use of this form and the number of copies to be submitted, particularly with regard to local, area, or regional procedures and practices, either are shown below or will be issued by, or may be obtained from, the local Federal and/or State office.

ITEM 1: If the proposal is to redrill to the same reservoir at a different subsurface location or to a new reservoir, use this form with appropriate notations. Consult applicable State or Federal regulations concerning subsequent work proposals or reports on the well.

ITEM 4: If there are no applicable State requirements, locations on Federal or Indian land should be described in accordance with Federal requirements. Consult local State or Federal office for specific instructions.

ITEM 14: Needed only when location of well cannot readily be found by road from the land or lease description. A plat, or plats, separate or on this reverse side, showing the roads to, and the surveyed location of, the well, and any other required information, should be furnished when required by Federal or State agency offices.

ITEMS 15 AND 18: If well is to be, or has been directionally drilled, give distances for subsurface location of hole in any present or objective production zone.

ITEM 22: Consult applicable Federal or State regulations, or appropriate officials, concerning approval of the proposal before operations are started.

NOTICE

The Privacy Act of 1974 and the regulation in 43 CFR 2.48(d) provide that you be furnished the following information in connection with information required by this application.

AUTHORITY: 30 U.S.C. 181 et seq., 25 U.S.C. 396; 43 CFR Part 3160.

PRINCIPAL PURPOSE: The information is to be used to process and evaluate your application for permit to drill, deepen, or plug back an oil or gas well.

ROUTINE USES: (1) The analysis of the applicant's proposal to discover and extract the Federal or Indian resources encountered. (2) The review of procedures and equipment and the projected impact on the land involved. (3) The evaluation of the effects of proposed operation on surface and subsurface water and other environmental impacts. (4)(5) Information from the record and/or the record will be transferred to appropriate Federal, State, local or foreign agencies, when relevant to civil, criminal or regulatory investigations or prosecutions, as well as routine regulatory responsibility.

EFFECT OF NOT PROVIDING INFORMATION: Filing of this application and disclosure of the information is mandatory only if the lessee elects to initiate drilling operation on an oil and gas lease.

The Paperwork Reduction Act of 1980 (44 U.S.C. 3501 et seq) requires us to inform you that:

This information is being collected to allow evaluation of the technical, safety, and environmental factors involved with drilling for oil and/or gas on Federal and Indian oil and gas leases.

This information will be used to analyze and approve applications.

Response to this request is mandatory only if the lessee elects to initiate drilling operations on an oil and gas lease.

APR 18 1981
RICK TALL

**MEXICO OIL CONSERVATION COMMISSION
WELL LOCATION AND ACREAGE DEDICATION PLAT**

Form C-102
Supersedes C-128
Effective 1-1-65

All distances must be from the outer boundaries of the Section.

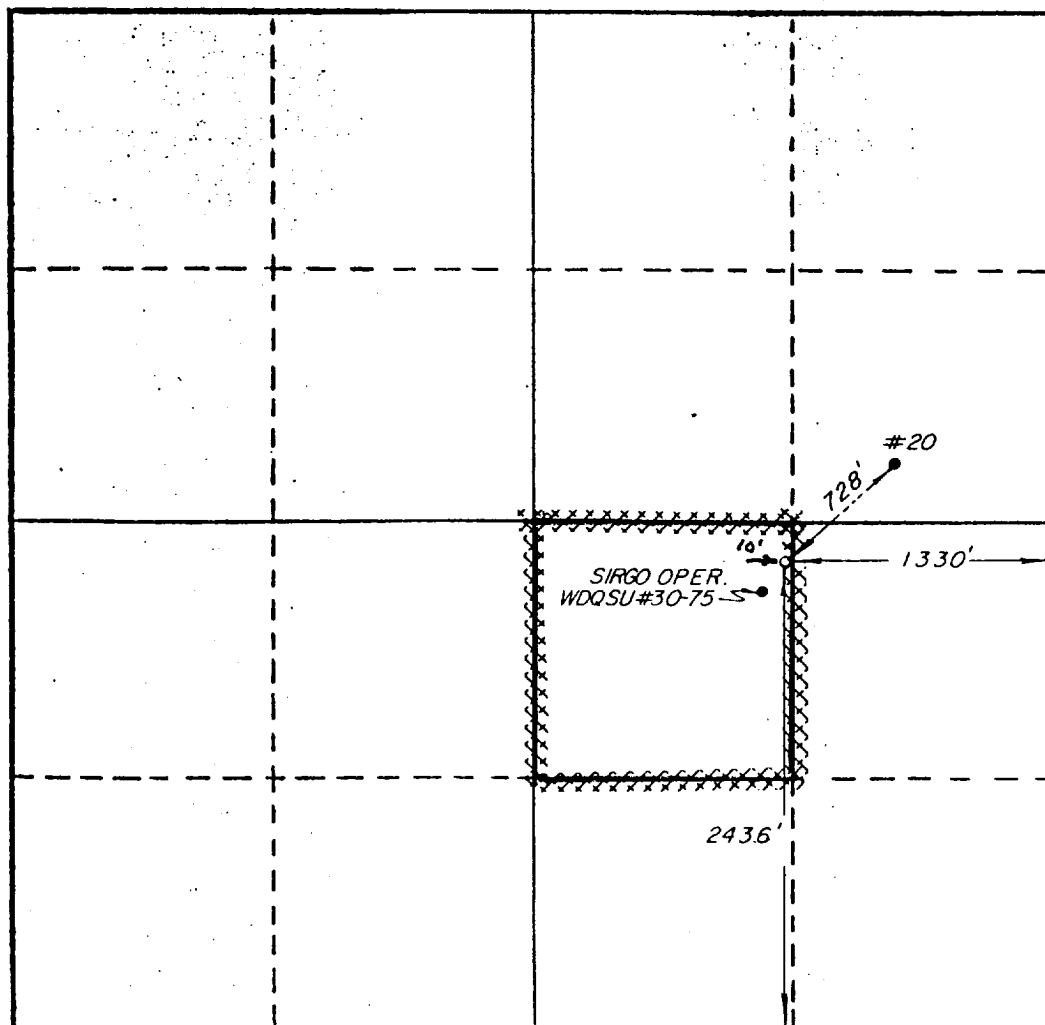
Operator TEXACO PRODUCING INC.			Lease West Dollarhide Drinkard Unit		Well No. 97
Unit Letter J	Section 30	Township 24-S	Range 38-E	County Lea	
Actual Footage Location of Well: 2436 feet from the South line and 1330 feet from the East line					
Ground Level Elev. 3168'	Producing Formation (Abo and Tubb Drinkard (Drinkard)		Pool Dollarhide Tubb Drinkard		Dedicated Acreage: 40 Acres

1. Outline the acreage dedicated to the subject well by colored pencil or hatchure marks on the plat below.
2. If more than one lease is dedicated to the well, outline each and identify the ownership thereof (both as to working interest and royalty).
3. If more than one lease of different ownership is dedicated to the well, have the interests of all owners been consolidated by communitization, unitization, force-pooling, etc?

☒ Yes ☐ No If answer is "yes," type of consolidation Unitization

If answer is "no," list the owners and tract descriptions which have actually been consolidated. (Use reverse side of this form if necessary.) _____

No allowable will be assigned to the well until all interests have been consolidated (by communitization, unitization, forced-pooling, or otherwise) or until a non-standard unit, eliminating such interests, has been approved by the Commission.



CERTIFICATION

I hereby certify that the information contained herein is true and complete to the best of my knowledge and belief.

Raye Mariott

Name

R. D. Mariott

Position

Division Surveyor

Company

Texaco Producing Inc.

Date

March 19, 1990

I hereby certify that the well location shown on this plat was plotted from field notes of actual surveys made by me or under my supervision, and that the same is true and correct to the best of my knowledge and belief.

March 19, 1990

Date Surveyed

Richard B. Duniven

Registered Professional Engineer
and/or Land Surveyor

Richard B. Duniven

Certificate No.

4882



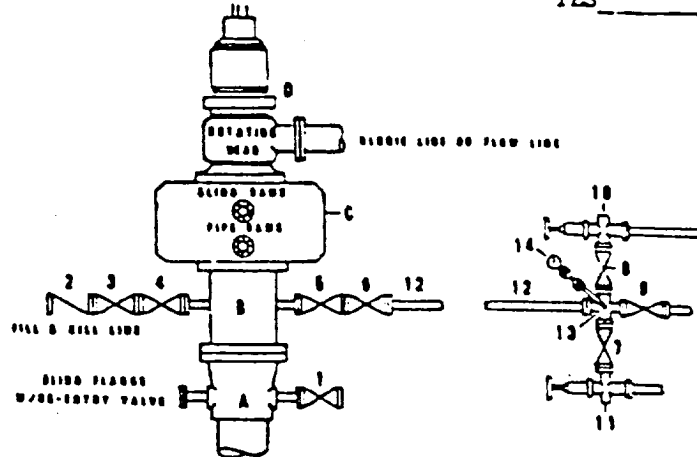
RECEIVED

APR 18 1990

OCD
HOBBS OFFICE

DRILLING CONTROL
CONDITION II-B 3000 WP
FOR AIR DRILLING OR
WHERE YATES AIR BLOWS ARE EXPECTED

H₂S TRIM REQUIRED
 YES _____ NO _____



DRILLING CONTROL

MATERIAL LIST - CONDITION II - B
FOR AIR DRILLING

- | | |
|---------------|---|
| A | Texaco Wellhead |
| B | 3000# W.P. drilling spool with a 2" minimum flanged outlet for kill-line and 3" minimum flanged outlet for choke line |
| C | 3000# W.P. Dual ram type preventer, hydraulic operated with 1" steel, 3000# W.P. control lines (where sub-structure height is adequate, 2-3000# W.P. single ram type preventers may be utilized.) |
| D | Rotating Head and extended Elastic Line. |
| 1,3,4,
7,8 | 2" minimum 3000# W.P. flanged full opening steel gate valve, or Halliburton Lo Torc Plug valve. |
| 7 | 2" minimum 3000# W.P. back pressure valve |
| 5,6,9 | 3" minimum 3000# W.P. flanged full opening steel gate valve, or Halliburton Lo Torc Plug valve. |
| 12 | 3" minimum schedule 80, Grade "B", seamless line pipe |
| 13 | 2" minimum x 3" minimum 3000# W.P. flanged cross |
| 10, 11 | 2" minimum 3000# W.P. adjustable choke bodies |
| 14 | Cameron Mud Gauge or equivalent (location optional in choke line.) |



TEXACO, INC.
 WILSON DIVISION
 WILSON, TEXAS



SCALE	DATE	EST. NO.	DRG. NO.
DRAWN BY			
CHECKED BY			
APPROVED BY			

EXHIBIT C

RECEIVED

APR 18 1990

OCD
HOBBS OFFICE

WEST DOLLARHIDE DRINKARD UNIT

CEMENTING PROGRAM

CONDUCTOR CASING: REDIMIX

SURFACE CASING: 1000 SACKS CLASS H WITH 2% Cacl₂ (15.6ppg, 1.19 f3/s, 5.2 gw/s).

INTERMEDIATE CASING: 400 SACKS 35/65 POZ CLASS H WITH 6% GEL, 5% SALT, 1/4# FLOCELE (12.8ppg, 1.87 f3/s, 9.9 gw/s). F/B 200 SACKS CLASS H WITH 2% Cacl₂ (15.6ppg, 1.19 f3/s, 5.2 gw/s).

DV TOOL AT 2600': 1050 SACKS CLASS H WITH 2% Cacl₂ (15.6ppg, 1.19 f3/s, 5.2 gw/s).

PRODUCTION CASING

WITH INTERMEDIATE: 525 SACKS 35/65 POZ CLASS H WITH 6% GEL, 5% SALT, 1/4# FLOCELE (12.8ppg, 1.87 f3/s, 9.9 gw/s). F/B 200 SACKS CLASS H (15.5ppg, 1.18 f3/s, 5.2 gw/s).

DV TOOL AT 4000': 575 SACKS 35/65 POZ CLASS H WITH 6% GEL, 5% SALT, 1/4# FLOCELE (12.8ppg, 1.87 f3/s, 9.9 gw/s).

PRODUCTION CASING

WITHOUT INTERMEDIATE: 525 SACKS 35/65 POZ CLASS H WITH 6% GEL, 5% SALT, 1/4# FLOCELE (12.8ppg, 1.87 f3/s, 9.9 gw/s). F/B 200 SACKS CLASS H (15.6ppg, 1.18 f3/s, 5.2 gw/s).

DV TOOL AT 4000': 1850 SACKS 35/65 POZ CLASS H WITH 6% GEL, 5% SALT, 1/4# FLOCELE (12.8ppg, 1.87 f3/s, 9.9 gw/s).

REC'D 10/24/90

ELF

RECEIVED

FEB 18 1990