

DISTRICT I  
P.O. Box 1986, Hobbs, NM 88241-1980  
DISTRICT II  
P.O. Box Drawer DD, Artesia, NM 88211-0719  
DISTRICT III  
1000 Rio Brazos Rd., Aztec, NM 87410  
DISTRICT IV  
P.O. Box 2088, Santa Fe, NM 87504-2088

State of New Mexico  
Energy, Minerals and Natural Resources Department

OIL CONSERVATION DIVISION

P.O. Box 2088  
Santa Fe, New Mexico 87504-2088

Form C-101  
Revised February 10, 1999  
Instructions on back  
Submit to Appropriate District Office  
State Lease - 6 Copies  
Fee Lease - 5 Copies  
☐ AMENDED REPORT

APPLICATION FOR PERMIT TO DRILL, RE-ENTER, DEEPEN, PLUGBACK, OR ADD A ZONE

<sup>1</sup> Operator Name and Address TEXACO EXPLORATION & PRODUCTION INC. 15 SMITH ROAD, MIDLAND, TX 79705		<sup>2</sup> OGRID Number 022351
<sup>4</sup> Property Code 010926	<sup>5</sup> Property Name WEST DOLLARHIDE DRINKARD UNIT	<sup>3</sup> API Number 30 025 31482 <sup>6</sup> Well No. 113

<sup>7</sup> Surface Location									
UI or lot no.	Section	Township	Range	Lot.Idn	Feet From The	North/South Line	Feet From The	East/West Line	County
M	32	24S	38E		136	SOUTH	1246	EAST	LEA

<sup>8</sup> Proposed Bottom Hole Location If Different From Surface									
UI or lot no.	Section	Township	Range	Lot.Idn	Feet From The	North/South Line	Feet From The	East/West Line	County
0	32	24S	38E		851	SOUTH	1974	EAST	LEA
<sup>9</sup> Proposed Pool 1 DOLLARHIDE TUBB DRINKARD					<sup>10</sup> Proposed Pool 2				

<sup>11</sup> Work Type Code P <i>Horizontal</i>	<sup>12</sup> Well Type Code O	<sup>13</sup> Rotary or C.T. ROTARY	<sup>14</sup> Lease Type Code S	<sup>15</sup> Ground Level Elevation 3140'
<sup>16</sup> Multiple No	<sup>17</sup> Proposed Depth 8407	<sup>18</sup> Formation DRINKARD	<sup>19</sup> Contractor	<sup>20</sup> Spud Date 7/8/2002

<sup>21</sup> Proposed Casing and Cement Program					
SIZE OF HOLE	SIZE OF CASING	WEIGHT PER FOOT	SETTING DEPTH	SACKS OF CEMENT	EST. TOP
14 3/4	11 3/4		1150	890 SX- CIRC 200 SX	
11	8 5/8		4200	1380 SX- CIRC 210 SX	
7 7/8	5 1/2		7435	1170 SX- TOC 200' TS	

<sup>22</sup> Describe the proposed program. If this application is to DEEPEN or PLUG BACK give the data on the present productive zone and proposed new productive zone. Describe the blowout prevention program, if any. Use additional sheets if necessary.

TEXACO E&P INTENDS TO DRILL A HORIZONTAL LATERAL IN THE SUBJECT WELL

KICK OFF POINT - 6207'  
TOP OF WINDOW - 6205  
BOTTOM OF WINDOW - 6212

Permit Expires 1 Year From Approval  
Date Unless Drilling Underway

*4-01-2012*

<sup>23</sup> I hereby certify that the rules and regulations of the Oil Conservation Division have been complied with and that the information given above is true and complete to the best of my knowledge and belief.		OIL CONSERVATION DIVISION	
Signature <i>J. Denise Leake</i>		Approved By:	
Printed Name J. Denise Leake		Title:	
Title Regulatory Specialist		Approval Date: Expiration Date:	
Date 5/22/2002	Telephone 915-687-7375	Conditions of Approval: Attached <i>3-10-02</i>	

**DISTRICT I**

P.O. Box 1980, Hobbs, NM 88241-1980

**DISTRICT II**

P.O. Box Drawer DD, Artesia, NM 88211-0719

**DISTRICT III**

1000 Rio Brazos Rd., Aztec, NM 87410

**DISTRICT IV**

P.O. Box 2088, Santa Fe, NM 87504-2088

State of New Mexico

Energy, Minerals and Natural Resources Department

Form C-102

Revised February 10, 1999

Instructions on back

Submit to Appropriate District Office

State Lease - 4 Copy

Fee Lease - 3 Copy

☐ AMENDED REPORT**OIL CONSERVATION DIVISION**

P.O. Box 2088

Santa Fe, New Mexico 87504-2088

**WELL LOCATION AND ACREAGE DEDICATION PLAT**

<sup>1</sup> API Number 30 025 31482	<sup>2</sup> Pool Code 18830	<sup>3</sup> Pool Name DOLLARHIDE TUBB DRINKARD
<sup>4</sup> Property Code 010926	<sup>5</sup> Property Name WEST DOLLARHIDE DRINKARD UNIT	<sup>6</sup> Well No. 113
<sup>7</sup> OGRID Number 022351	<sup>8</sup> Operator Name TEXACO EXPLORATION & PRODUCTION INC.	<sup>9</sup> Elevation 3140'

<sup>10</sup> Surface Location

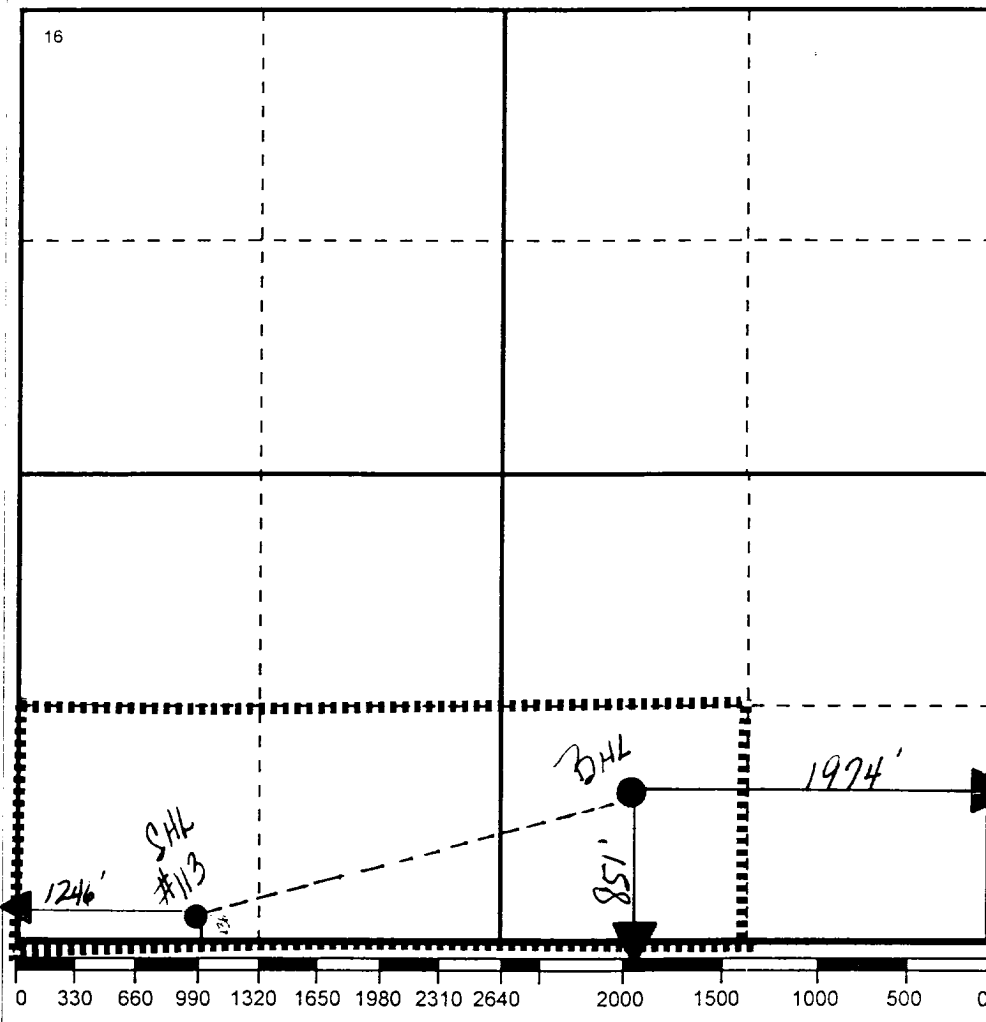
Ul or lot no	Section	Township	Range	Lot.Idn	Feet From The	North/South Line	Feet From The	East/West Line	County
M	32	24S	38E		136	SOUTH	1246	WEST	LEA

<sup>11</sup> Bottom Hole Location If Different From Surface

Ul or lot no.	Section	Township	Range	Lot.Idn	Feet From The	North/South Line	Feet From The	East/West Line	County
0	32	24S	38E		851	SOUTH	1974	EAST	LEA

<sup>12</sup> Dedicated Acre 120	<sup>13</sup> Joint or Infill No	<sup>14</sup> Consolidation Code	<sup>15</sup> Order No.
-------------------------------------	-------------------------------------	----------------------------------	-------------------------

NO ALLOWABLE WILL BE ASSIGNED TO THIS COMPLETION UNTIL ALL INTERESTS HAVE BEEN CONSOLIDATED  
OR A NON-STANDARD UNIT HAS BEEN APPROVED BY THE DIVISION

**17 OPERATOR CERTIFICATION**

I hereby certify that the information contained herein is true and complete to the best of my knowledge and belief

Signature

*J. Denise Leake*

Printed Name

J. Denise Leake

Position

Regulatory Specialist

Date

5/22/2002

**18 SURVEYOR CERTIFICATION**

I hereby certify that the well location shown on this plat was plotted from field notes of actual surveys made by me or under my supervision, and that the same is true and correct to the best of my knowledge and belief.

Date Surveyed

Signature & Seal of  
Professional Surveyor

Certificate No.

# Data for Lea County, New Mexico

West Dollatide Drinkard Unit

0 2,790 5,580

FEET

## POSTED WELL DATA

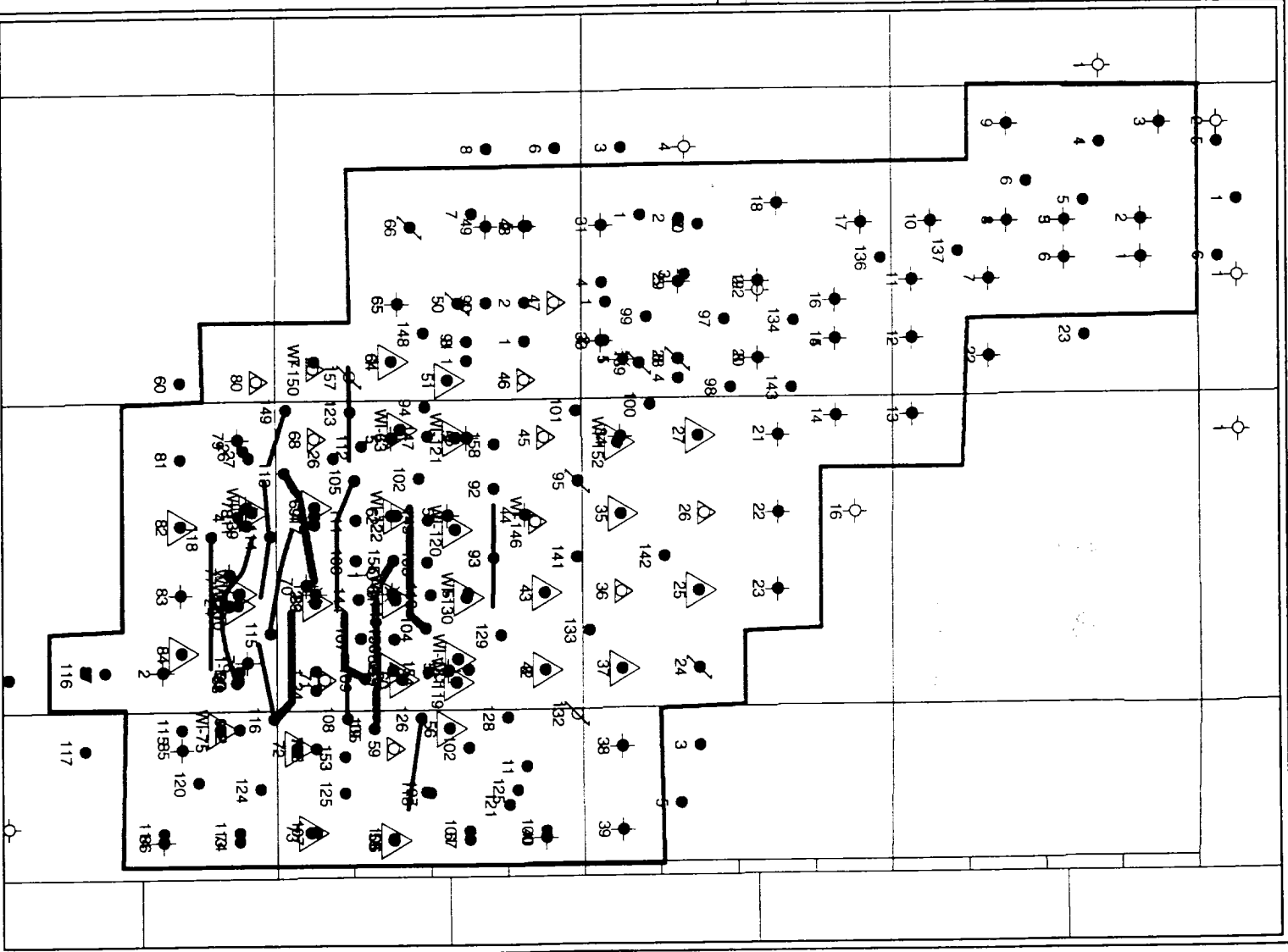
Well Number

## WELL SYMBOLS

- Oil Well
- ⊙ Gas Well
- ⊙ Dry Hole
- ⊙ Active Injection Well
- ⊙ Shut-In Oil Producer
- ⊙ Temp Abandoned
- ⊙ Plugged and Abandoned
- ⊙ Shut-In Injection Well

By: Cynthia L. Welch

May 17, 2002



## West Dollarhide Drinkard Unit



Well Number

## WELL SYMBOLS

- Oil Well
- ☀ Gas Well
- Dry Hole
- △ Active Injection Well
- ◻ Shut-in Oil Producer
- ⊗ Temp Abandoned
- ⊘ Plugged and Abandoned
- ▽ Shut-in Injection Well

By: Cynthia L. Welch

May 17, 2002

