

District I - (505) 393-6161
P. O. Box 1980
Hobbs, NM 88241-1980
District II - (505) 748-1283
811 S. First
Artesia, NM 88210
District III - (505) 334-6178
1000 Rio Brazos Road
Aztec, NM 87410
District IV

New Mexico
Energy Minerals and Natural Resources Department
Oil Conservation Division
2040 South Pacheco Street
Santa Fe, New Mexico 87505
(505) 827-7131

Form C-140
Originated 11/1/95

Submit Original
Plus 2 Copies
to appropriate
District Office

*H-0498 Rejected filed
7 mos. past
deadline*

APPLICATION FOR
QUALIFICATION OF WELL WORKOVER PROJECT
AND CERTIFICATION OF APPROVAL

THREE COPIES OF THIS APPLICATION AND ALL ATTACHMENTS MUST BE FILED WITH THE APPROPRIATE DISTRICT OFFICE OF THE OIL CONSERVATION DIVISION.

- I. Operator: Enron Oil & Gas Company OGRID #: 7377
Address: P.O. Box 2267, Midland, Texas, 79702
Contact Party: Lee Roark Phone: 915/686-3608
- II. Name of Well: Diamond 7 Fed. Com. No. 1 API #: 3002531638
Location of Well: Unit Letter 660 Feet from the South line and 1980 feet from the East line,
Section 7, Township 25S, Range 34E, NMPM, Lea County
- III. Date Workover Procedures Commenced: 10/31/96
Date Workover Procedures were Completed: 7/25/97
- IV. Attach a description of the Workover Procedures undertaken to increase the production from the Well.
- V. Attach an estimate of the production rate of the Well (a production decline curve or other acceptable method, and table showing monthly oil and/or gas Project Production) based on at least twelve (12) months of established production which shows the future rate of production based on well performance prior to performing Workover.
- VI. Pool(s) on which Production Projection is based:
Pitchfork Ranch (Third Bone Spring)

VII. AFFIDAVIT:

State of Texas)
County of Midland) ss.

09/30/98, being first duly sworn, upon oath states:

1. I am the Operator or authorized representative of the Operator of the above referenced Well.
2. I have made, or caused to be made, a diligent search of the production records which are reasonably available and contain information relevant to the production history of this Well.
3. To the best of my knowledge, the data used to prepare the Production Projection for this Well is complete and accurate and this projection was prepared using sound petroleum engineering principles.

(Name) Lee Roark

Engineer Tech

(Title)

SUBSCRIBED AND SWORN TO before me this 3rd day of September, 1998



PEGGY C. LAVINE
Notary Public, State of Texas
My Commission Expires 11-21-98

Peggy C. Lavine
Notary Public

My Commission expires: _____

FOR OIL CONSERVATION DIVISION USE ONLY:

VIII. CERTIFICATION OF APPROVAL:

This Application for Qualification of Well Workover Project is hereby approved and the above referenced Well is designated as a Well Workover Project pursuant to the "Natural Gas and Crude Oil Production Incentive Act" (Laws 1995, Chapter 15, Sections 1 through 8). The Oil Conservation Division hereby verifies the Production Projection for the Well Workover Project attached to this application. By copy of this Application and Certification of Approval, the Division notifies the Secretary of the Taxation and Revenue Department of this Approval and certifies that this Well Workover Project has been completed as of _____, 19__.

District Supervisor, District ____
Oil Conservation Division

Date: _____

IX. DATE OF NOTIFICATION TO THE SECRETARY OF THE TAXATION AND REVENUE DEPARTMENT.

DATE: _____

DIAMOND 7 FEDERAL COM NO. 1
660' FSL & 1,980' FEL
Sec 7, T25S, R34E
LEA Co., NM
Spud Date: 07/18/92

ENRON OIL & GAS COMPANY
DEV W/O: 15,623' MORROW
PITCHFORK RANCH Field
EOG#: 95.3183% WI 80.4583% NRI
AFE No.: 10-1163
DHC: 0; CWC: 330,000

- 10/31/96 Abandon the Morrow C zone and recomplete in the Third Bone Spring Sand.
- 4 hrs MIRU Yale E. Key CU. Pumped 50 bbls of FW down 3-1/2" tbg. Bleed down 3-1/2" x 7-5/8" annulus. Recovered 2-3 bbls of gas cut drlg mud. Unflanged 3-1/2" 10,000 psig x 7-1/16" tree. NU 7-1/16" x 5000 psi. BOP's and connected u Hydraulic accumulator. Will run gauge ring and set bridge plug in 3-1/2" tbg today (10-31-96).
DWC \$1,790. CWC \$1,790.
- 11/01/96 6 hrs RU JSI Wireline. Ran 2.25" gauge ring on wireline to 15,340'. POH with gauge (waited 1 hr on CIBP). Ran Magna Range CIBP (setting range 2.375" to 3.00"). RIH to 15,290', correlated depth collar log from cmt bond log of 10-9-92. Attempted to set CIBP @ 15,270' (mid jt). Had indication of cap firing, no indicator of tool sticking, and plug shearing off. Chk for set down - collar locator indicated movement downward (no plugs), checked 2nd collar below 15,270' POH with setting tool, BP had sheared off. SD. DWC \$1,740. CWC \$3,530.
- 11/02/96 9-1/2 hrs RU wireline. TIH with 2.597' gauge ring to 13,520'. TOH LD gauge ring. PU Baker Wireline set CIBP (max OD 2.562") TIH to 15,265'. Correlated depth with collars on bond log (10-9-92). Set BP @ 15,265' (mid jt). TOH with setting tool. Loaded 3-1/2" with 87 bbls of fresh water PU wireline dump bailer and dumped 35' of cmt on top of BP. Top of cmt @ 15,230'. RD wireline dump bailer to obtain heavy dut connection to utilize wireline swivel and run freepoint and backoff 3-1/2" on tbg today (11-2-96). DWC \$2,060. CWC \$5,590.
- 11/03/96 11-1/2 hrs RU freepoint tool, swivel etc. TIH to 13,300'. Taking freepoint from 13,000' up to 11,000', 20-40# free pipe, both on stretch and rotation (note: unable to get full slack off on 3-1/2" tbg due to wraparound. TOH with freepoint tool. TIH with single point perforator, perforated 12,687' with 1/2" hole while holding 3000 psi on 3-1/2" when perforating. No change in pressure after perforating, no flow on 3-1/2". TOH with perforator. Pressured 3-1/2" to 5000 psig. It bled off to 3500 psig. Repressed to 5,000 psig, and it bled off. Repeated until well started circ at 1/4 B/M with 3800 psig. Gradually increasing to 2-1/4 B/M with pressure decreased to 2800 psig. Circulated out heavy mud. Circulated out 430 bbls. TIH with jet cutter (drill pipe cutter) and fire charge @ 12,687'. TOH with jet cutter. Tbg (3-1/2") did not shear free. SIFN to work with torque and weight today (11-3-96) in effort to finish shearing tbg. DWC \$3,090. CWC \$8,680.

DIAMOND 7 FEDERAL COM NO. 1

660' FSL & 1,980' FEL

Sec 7, T25S, R34E

LEA Co., NM

Spud Date: 07/18/92

ENRON OIL & GAS COMPANY

DEV W/O: 15,623' MORRIS

PITCHFORK RANCH Field

EOG%: 95.3183% WI 80.4583% NRI

AFE No.: 10-1163

DHC: 0; CWC: 330,000

- 11/04/96 4 hrs working tbg to max pull of 185,000 lbs. No success. Ran 2nd jt cutter (2-1/4", 88 grams) and fired @ 12,685'. TOH working tbg with pull weight from 180,000 to 195,000 - no success. RU Howco pump truck and circulated hole @ 500 gals of mud flush, followed with 1500 gal F/W gel sweep displaced with total of 650 bbls of water (sweep showed very little indication of mud solids, - dirty water). Pumped 5 B/M @ 900 psig. Worked tbg between 210,000 lbs and 220,000 lbs. Tbg pulled free. Backed out tie-down screws on tbg. Pulled out wraparound. LD hanger wraparound and 3 tbg pumps and 10 jts of 3-1/2" tbg. SD. DWC \$22,848. CWC \$31,528.
- 11/05/96 10-1/2 hrs LD 3-1/2" tbg. LD 1 jt 3-1/2" 10.30 #/ft P105 CS CB, 1 double pin sub, 3 pups (3.85', 7.66' & 9.64') 3-1/2" 10.30#/ft P105 CSCB. 367 jts 3-1/2" 10.30 #/ft, P105 cp. 1 XO CP, 3-1/2" ph5 and cp. 27 jts 3-1/2" 12.95 #/ft, P-105, PH6. 1 cut off jt 3-1/2" 12.95 #/ft, P-105, PH6. RU cat walk and reset pipe racks. Move 3-1/2" tbg to inspection racks, RU Curley's inspection equipment and started inspecting tbg. DWC \$3,241. CWC \$34,769.
- 11/06/96 13-1/2 hrs RU Apollo Wireline ran gauge ring for 7-5/8" csg to 12,707' uncorrected depth (correlated depth to open hole Density Neutron log of 8-28-96) of 12,680'. TOH with gauge ring. PU CIBP and set @ 12,675' uncorrected depth (corrected depth 12,648') TOH pressured plug to 2000 psig. Held OK. TIH with Cmt Bond Log. Ran Bond Log from 12,648'-12,000' without pressure. Pressured csg to 2000 psig. Tool failed. TOH and PU 2nd tool. TIH and logged from 12,648' to 12,000' with 2000 psig on csg. TOH. TIH w/cmt dump bailer dumped 18' on top of retainer. TOH and RD. Unloaded and cleaned and drifted and checked threads on csg. Tallied csg. RD BOP's removed "B" section and changed out csg spool and tested. RU BOP's. DWC \$16,338. CWC \$51,107.
- 11/07/96 RU LD equipment and Howco pump equipment. Waited on csg crew. RU 5-1/2" csg shoe jt. Checked flow thru float and shoe. Ran 26 jts of 5-1/2" 17#/ft, CF 95 LT&C casing, changed to 5-1/2" 17#/ft - N-80 LT&C and ran 242 jts changed to 5-1/2" 17#/ft, CF-95 and ran 8 jts and hit bridge, throwing slack in line and then dropped through. Damaged wt indicator. Unable to PU with same power and gear ratio using prior to hitting bridge filled csg and circulated hole. SD. To chk service unit, and installed wt indicator today (11-7-96). DWC \$8,345. CWC \$59,452.

Page 3
DIAMOND 7 FEDERAL COM NO. 1
660' FSL & 1,980' FEL
Sec 7, T25S, R34E
LEA Co., NM
Spud Date: 07/18/92

ENRON OIL & GAS CO ANY
DEV W/O: 15,623' MORR.
PITCHFORK RANCH Field
EOG#: 95.3183% WI 80.4583% NRI
AFE No.: 10-1163
DHC: 0; CWC: 330,000

11/08/96 10-1/2 hrs installed new wt indicator. Realigned rig mats and leveled derrick (steel mat had settled). PU on csg to 240,000 lbs csg move up hole 4' no further movement @ 240,000 lbs (string wt in water 178,000 lbs). Slacking down on csg no travel down hole with slack-off to 155,000 lbs. Circulated csg with 200 bbls of 30# gel working casing from 160,000 lbs to 220,000 lbs while pumping - no csg movement, max rate 4.5 to 5 B/M with 250-300 psig circ pressure. Wait on & RU slickline equipment. Ran 4.75" gauge ring on junk basket. Set down @ 10,796' (slick line measurement). No drag on PU, no indication of sticking TOH. PU 4.34" gauge ring and TIH to 10,801' no drag or PU. Setting down solid. (variation in depth probably due to difference in slick line measurements. PU and set down characteristics the same for both gauge rings). DWC \$8,800. CWC \$40,328.

11/09/96 7 hrs RU Wedge WL. Ran 3-1/8" multi arm caliper. Caliper stopped @ 10,775'. TOH PU 1-11/16" sinker bars and TIH to 10,775'. Tagged up sinker bars hung up. Worked loose. TOH. PU free point tool - TIH checking free point at various depths checked collar @ 10,748'. Joint completely free in mid joint below 10,748'. Reduced ID appears to be at connection on jt below collar @ 10,748'. TOH RD WL. DWC \$24,284. CWC \$64,612.

11/10/96 Static. Released rental equipment. Not required for additional operations. DWC \$1,190. CWC \$65,802.

11/11/96 Static securing equipment to backoff, pull and LD 5-1/2" csg above damaged csg @ 10,775'. DWC \$750. CWC \$66,552.

11/12/96 RU Wedge Dialog Wireline equipment, LD equipment, csg crew equipment. Cleaned thread protectors. Ran free point and string shot to connection (10,748') above bad place in 5-1/2' csg @ 10,775' (slickline measurements) obtained torque reading and worked torque down to point of anticipated backoff. Built in left hand torque and fired string shot @ 10,748'. Csg back off. PU csg 4' and observed change in collar locator indicating that csg had separated. TOH with wireline and rigged down. RU and LD 102 jts of 5-1/2" csg. SIFN. DWC \$3,674. CWC \$70,226.

Page 4
DIAMOND 7 FEDERAL COM NO. 1
660' FSL & 1,980' FEL
Sec 7, T25S, R34E
LEA Co., NM
Spud Date: 07/18/92

ENRON OIL & GAS COMPANY
DEV W/O: 15,623' MORRIS
PITCHFORK RANCH Field
EOG: 95.3183% WI 80.4583% NRI
AFE No.: 10-1163
DHC: 0; CWC: 330,000

11/13/96 8 hrs finished pulling csg: Csg details: Total csg left in hole with top @ 10,748' (slick line depths). Not correlated to any open hole log depths. Csg detail as follows: Total csg on location originally 12,870.73', 53 jts of 5-1/2" 17#/ft, S-95. LT&C 2287.63', 245 jts of 5-1/2 17#/ft, IY-80. LT&C 10,583.10', csg left in hole.
Shoe 1.38'
Shoe jt 5-1/2", 17#, S95, LTC, 42.78'.
Float collar 0.96'
25 jts of 5-1/2' 17#/ft, S-95 LT&C 1100.62
1 jt of 5-1/2", 17#/ft, N-80, LTC 42.78
w/reduced ID @ btm.
1 jt of 5-1/2", 17#/ft, N-80, LTC, 42.38'
Csg on racks not run:
4 jts of 5-1/2", 17#/ft, N-80, LT&C, 163.73'
18 jts of 5-1/2", 17#/ft, S-95, LT&C 783.23'
Pipe on rack pulled from well
9 jts of 5-1/2' 17#/ft, S-95, LT&C 361.08
239 jts of 5-1/2", 17#/ft, N-80, LT&C 10334.21'
RD PU equipment and released all rentals except one tank with 2% KCl water to be used as kill fluid on James Ranch workover. DWC \$6,684. CWC \$76,910.

04/26/97 MIRU, Workover

04/28/97 RU McVay rig #8. Will start 24 hr operation this a.m.. Top fish 5-1/2" csg @ 10,748', length of fish 1,230.90'. Btm fish @ 11,978.90'

04/29/97 Day 1. Depth 12,630'. PO-TOH w/fish. 24 hrs other; 7-5/8" csg @ 13,298'; SPM 60, GPM 216, press 850; MW 8.4, Vis 28. 8-1/4 hrs RURT, NU BOP and manifold, change pipe rams, test to 2,000 psi. 8-1/2 hrs PU fish TLS, 6 - 4-3/4" DC, 340 jts 3-1/2" DP, TIH to 10,727'. 3/4 hrs screw into fish, work same and retighten. 2-1/4 hrs jar on fish 75000 over string wt and pull 100,000 over string wt, move fish 40' and came free. 4-1/4 hrs TOH with fish, 30-40 drag. DWC \$54,981. CWC \$54,981.

DIAMOND 7 FEDERAL COM NO. 1

660' FSL & 1,980' FEL

Sec 7, T25S, R34E

LEA Co., NM

Spud Date: 07/18/92

ENRON OIL & GAS COMPANY
DEV W/O: 15,623' MORR
PITCHFORK RANCH Field
EOG: 95.3183% WI 80.4583% NRI
AFE No.: 10-1163
DHC: 0; CWC: 330,000

04/30/97

Day 5. Depth 12,630' PBTD. PO-PU on the 7-5/8" csg and remove csg slips. 24 hrs other, 7-5/8" csg @ 13,298'; SPM 60, GPM 216, press 850; MW 8.4, Vis 28. 5-1/2 hrs TOH with fish, top fish stopped @ 2,798', jar fish to 2,788' btm fish @ 4,019'. 3-1/2 hrs jar down on fish, no movement. 1-3/4 hrs RU dialog and run collar log inside DP, top fish @ 2,788', set down @ 2,831', top 2nd jt of csg. 1-1/4 hrs back off manually @ 2,788', TOH with DP, DC, fish TLS. 1/2 hr LD jars, bumper sub, 5-1/2" csg 8rd, sub. 4-1/2 hrs ND BOP. 1 hr cut drlg line. 4 hrs weld jt 7-5/8", 39#, P-110 csg to the jt in the slips. 2 hrs RU csg tools and pull on 7-5/8" csg. PU string @ 340,000 lbs, remove slips. Prep to run Dialog string shot and back off 7-5/8" csg. DWC \$9,832. CWC \$64,813.

05/01/97

2 hrs RU swivel in 7-5/8" landing jt. RU Dialog and ran 45' string shot between 7-5/8" and 10-3/4" csg to 9,009'. 1 hr work 3/4 round LH torque into 7-5/8" csg to fired shot. 1 hr work WL out of hole, rec all. 1 hr complete back off with 10 rds. Ran WL and checked break. Backed off @ 2,560'. Top of 5-1/2" cg @ 2,836'. 2 hr RD wl and swivel. 3-3/4 hrs move DP in derrick, RU csg crw. 2-1/4 hrs LD 47 jts 7-3/4" 46.10# csg. 1/2 hr RD csg crew and LD machine. 2-1/2 hrs NU BOP's. 2-1/2 hrs ran in hole with screw-in sub and bumper sub to 2,555'. 1/2 hr circ hole clean. 4 hrs RU wireline and power tongs, screw into 7-5/8" csg @ 2,560'. Tighten string shot to 3,047-3,092', could not go deeper. Put 3/4 round of left hand torque in DP and fired back off shot, 7-5/8" csg did not break. 1 hr pull out of hole with WL. Prep to run 2nd string shot. DWC \$14,480. CWC \$79,293.

05/02/97

Day 7. Depth 12,630' PBTD. PO-WO 7-5/8" csg to be repaired. 7-5/8" csg @ 13,298'; MW 8.4, Vis 28. 3 hrs make up string shot, RIH to 3052-3097 put 1-3/4 rounds of left hand torque in pipe and fired shot and pipe failed to break. Pull out of hole with WL. 3 hrs tightened pipe to 7500 lbs. Ran in hole with 400 grains/ft string shot set @ 3,055'-3,100'. Put 6,000 ft lbs of left hand torque (3 rods) in pipe and fired back off shot and pipe broke. Pull out of hole with WL. 3 hrs pull out of hole with drill pipe. 6 hrs lay down casing. DWC \$21,734. CWC \$101,027.

Page 6
DIAMOND 7 FEDERAL COM NO. 1
660' FSL & 1,980' FEL
Sec 7, T25S, R34E
LEA Co., NM
Spud Date: 07/18/92

ENRON OIL & GAS COMPANY
DEV W/O: 15,623' MORRIS
PITCHFORK RANCH Field
EOG: 95.3183% WI 80.4583% NRI
AFE No.: 10-1163
DHC: 0; CWC: 330,000

05/03/97

Day 8. Depth 12,630' PBTD. PO-Run 7-5/8" csg. 7-5/8" csg @ 13,298'; MW 8.4, Vis 28, 15-1/4 hrs wait on 7-5/8" csg to be repaired. 5 hrs unload csg, strap same, RU csg crew and LD machine, build guide for screw in jt. 3-3/4 hrs run 7-5/8" csg incomplete. DWC \$8,386. CWC \$109,413.

Detail:

7 jts 7-5/8", 29.70#, S95, 8rd	256.72	2803
4 jts 7-5/8", 33.70#, S95, 8rd	153.65	2649
1 jt x-over 7-3/4", 46.10#, S-105	46.60	2602
50 jts, 7-3/4", 46.10#, S105, SFJ	2221.18	381
1 jt x-over 7-5/8", 39#, P110	42.51	339
7 jts, 7-5/8", 39#, P110, Mac hydril	292.58	46
Total ftg picked up	3079.48	
Less cut off	11.66	
Plus KB to GL	18.50	
Setting depth @ RKB	3059.74	

05/04/97

Day 9. Depth 12,630' PBTD. PO-displace hole w/2% KCL water. MW 8.4, Vis 28. SPM 59, GPM 212, press 1400; 4 hrs finish running 71 jts (3,056') of 7-5/8" and 7-3/4" 29.70#, 33.70# 39# and 46.10# S-95, S-105 and P0110 csg, screwed into 7-5/8" csg to 3059.74'. Weld on csg collar and attempted to test 7-5/8", had leak in weld. No test. 6 hrs wait on new 7-5/8" slip on csg collar. 2-1/4 hrs weld on new csg collar. 1/4 hr press test 7-5/8" and 7-3/4" csg from surface to 12,630' (PBTD) to 3,000 psi with fresh water, tested OK. Bled pressure off well. 3-1/2 hrs Pulled up to 290,000 lbs and set csg slips cut off 7-5/8" csg, NU tbg head, tested seals to 5,000 psi OK. NU BOP's. 8 hrs TIH wiht 6-1/2" bit and csg scraper to 12,615'. Now circulating. DWC \$12,203. CWC \$121,616.

05/05/97

Day 10. Depth 12,630' PBTD. PO-Run 4-1/2" tbg. 7-5/8" csg @ 13,298'. 3-1/4 hrs displace hole with 2% KCL water @ 12,615'. 7-1/4 hrs lay down drill pipe, drill collars, csg scraper and bit. 3 hrs ND rig BOP's, NU 11" 5,000# rental BOP. 10-1/2 hrs PU Halliburton 7-5/8" PLS pkr with 32.50' of tail pipe with 2 2.313 x profile nipple, on/off tool 2 jts 3-1/2 12.95 P-110 PH-6 tbg and 302 jts 4-1/2" 15.5# P-110 PH-6 tbg to 9,445 incomplete. DWC \$6,477. CWC \$128,093.

DIAMOND 7 FEDERAL COM NO. 1
660' FSL & 1,980' FEL
Sec 7, T25S, R34E
LEA Co., NM
Spud Date: 07/18/92

ENRON OIL & GAS COMPANY
DEV W/O: 15,623' MORROW
PITCHFORK RANCH Field
EOG%: 95.3183% WI 80.4583% NRI
AFE No.: 10-1163
DHC: 0; CWC: 330,000

05/06/97

Day 11. Depth 12,630' PBTB. 2 hrs finish running 4-1/2" tbg. 3/4 hr set pkr @ 12,217'. 3-3/4 hrs nipple up well head, test tbg to 6,000 psi. Test annulus to 3,000 psi. 8-3/4 hrs RU Schlumberger, GIH with perforating gun, perforate Third Bone Spring with 2-1/8" expendable guns 4 SPF - 45 deg phased as follows: 12,306' to 12,324' (18'-72 holes). 12,364' to 12,384' (20'-80 holes) total of 152 holes. After first perforating run, less than 50 psi. Had mis-fire on second run had 400 psi. Had 700 psi after third perforating run, Had 400 psi last reading before rigging down lubricator. 3/4 hr RD Schlumberger. 8 hrs WO frac equipment to arrive on location & RU. DWC \$37,068. CWC \$165,161.

Page 3
 DIAMOND 7 FEDERAL COM NO. 1
 660' FSL & 1,980' FEL
 Sec 7, T25S, R34E
 LEA Co., NM
 Spud Date: 07/18/92

ENRON OIL & GAS CO ANY
 DEV W/O: 15,623' MORROW
 PITCHFORK RANCH Field
 EOG: 95.3183% WI 80.4583% NRI
 AFE No.: 10-1163
 DHC: 0; CWC: 330,000

05/07/97

Day 12. Depth 12,630' PBTB. 7-1/2 hrs RU BJ services, frac well.
 9 hrs RU BJ frac equipment. Installed 4-1/6" x 10,000 psig frac
 head. Fraced Third Bone Spring interval from 12,306 to 12,384'
 using 86,000 gal of Medallion 3,000, carrying 172,000 lbs of 16/30
 interprop down 4-1/2"/3-1/2" tbg. Spearhead frac with 3,000 gals
 of 15% HCL acid containing 200 sealer balls. Tagged proppant with
 1 MCi/1000 lbs with IR-192. Displaced sand slurry mixture an avg
 injection rate of 42.7 bbls/min with avg injection pressure of
 7,408 psig. Initial tbg pressure prior to frac 2218 psig. ISIP
 5573 psig, 5 min - 5,441, 10 min 5,397, 15 min 5,387 psig. Total
 load fluid 2,533 bbls. Details as follows:
 Tested lines to 11,000 psig. IBDP 6,300 psig.

VOL BBLs	RATE B/M	TP PSIG	CP PSIG	Sand Conc	REMARKS
16	9.9	6337	2437	0	acid
72	11.3	6219	2467		start flush
40	11.4	6151	2388		flush
100	13.1	6601	2437		flush
185	15.9	6838	2437		acid flush
Surged off balls, SD for 30 min ISIP 5030 psi					
Started frac					
30	25	8600	2624		pad
100	31.3	9030	2516		pad
200	38.7	7570	2378		pad
450	42.5	7755	2457		pad
595	45.2	7933	2457		start 1#/gal
100	44.2	7796	2496	1.1	1#/gal
200	43.5	7363	2496	1.0	1#/gal
220	42.0	7316	2496	2.0	start 2#/gal
100	45.6	7424	2496	2.0	2#/gal
200	45.6	7473	2506	2.0	2#/gal
358	46.2	7473	2506	2.7	start 3#/gal
50	44.1	7158	2486	3.2	3#/gal
300	41.3	6787	2437	3.0	3#/gal
400	42.4	6954	2516	3.1	3#/gal
451	42.3	6934	2506	4.0	start 4#/gal
100	41.7	6895	2506	4.1	4#/gal
300	43.1	6915	2506	4.0	4#/gal
400	43.2	6934	2506	4.1	4#/gal
498	41.9	6974	2506	4.0	start flush
50	41.1	7150	2516	0	flush
100	39.9	7698	2516	0	flush
150	39.7	7894	2516	0	flush
170	38.4	7228	2516	0	flush
176	38.4	5573	2516	0	flushed

6 hrs SWI. 7 hrs make gauge ring run (2.27 OD) to 12,300', RIH
 with blanking plug 2.313 OK. Plug would not go through top
 profile nipple beacuse of accumulation of frac sand, make wiper
 run to clean out frac sand, attempt to run plug a second time.

Page 9
DIAMOND 7 FEDERAL COM NO. 1
660' FSL & 1,980' FEL
Sec 7, T25S, R34E
LEA Co., NM
Spud Date: 07/18/92

ENRON OIL & GAS CO ANY
DEV W/O: 15,623' MORRIS
PITCHFORK RANCH Field
EOG: 95.3183% WI 80.4583% NRI
AFE No.: 10-1163
DHC: 0; CWC: 330,000

Plug went all the way down, but the plug would not set. 2 hrs wait on electric line truck to set CIBP. RD BJ frac equipment. Released and moved out frac tanks. DWC \$176,032. CWC \$341,193.

05/08/97

Day 13. Depth 12,630'. PO-WSI, RU flow back equipment. 3 hrs wait on electric wireline truck. 6 hrs RU Jarrels electric line equipment, installed flange and lubricator. PU sinker bars. collar locator, Alpha CIBP (2.10" OD). TIH and set in 2-7/8" tailpipe at 12,249' (tbg depth), set CIBP 5' from end of tailpipe and 5' below btm 2.313" OD profile nipple, trip out of hole, blow tbg down in 3 min. RD Jarrel services. 2 hrs try to UN-J from packer assembly, could not get off packer. 7 hrs evaluating. 1/4 hrs back off from pkr assembly manually. 3-3/4 hrs after backing off pkr, assembly tbg jumped, well started to flow up both tbg and annulus. SWI. Wait on Pro Well testing to get flow back equipment to location. 2 hrs RU Pro Well Testings equipment for flow back. SI tbg pressure 3400 psi, SI annulus press 3400 psi. DWC \$13,335. CWC \$354,528.

05/09/97

Day 14. Depth 12,630' PBSD. PO-Flowing well to pit. 7-5/8" csg @ 13,298'. 2 hrs RU flowback equipment, open TIW valve. 22 hrs flow well. Start flowing well to pit @ 8:00 a.m., FTP 3750, CP 3750. Start flowing on 14/64" chk 18 to 20 bbls per hr. 11:00 a.m. Increased chk to 20/64" tbg press 1650. Csg pressure 1000, 50 bbls/hr. 4:00 p.m. increased chk to 26/64". Total recovery in 22 hrs 466 BW, 55 BO. Last pressure reading at 6:00 a.m., FTP 1300 psi, CP 650 psi, chk 26/64", moving in snubbing equipment today. DWC \$15,650. CWC \$370,178.

05/10/97

Day 15. Depth 12,630' PBSD. PO-Waiting on snubbing unit. 7-5/8" @ 13,298'; 10 hrs flow well up through tbg. 3-3/4 hrs RU Halliburton wireline truck. Set CIBP at 12,200' (20' below collar of first jt of 3-1/2" tbg above pkr assembly. Start flowing up annulus at 4:00 p.m., 5-10-97. 2 hrs blow down tbg. 4-3/4 hrs NU additional blowout preventer and hydril above floor, flow well up annulus. 3-1/2 hrs continue to flow well up annulus, wait on snubbing unit to arrive. Flow back information. 10 hrs flowing up through tbg, recovery 201 water, 78 oil. 14 hrs flowing up annulus, 4 hrs flow well from annulus, wait on snubbing unit. 5 hrs continue to flow well from annulus, RU Halliburton snubbing unit. Recovery information, 109 BW, 134 BO. Last hr 36/64" chk, 8 BW, 15 BO, annulus pressure 290 psi. Recovery 204 BW, 92 BO. 1929 BLTR. Total water 871 bbls, total oil 225 bbls. Last pressure reading on 31/64" chk. Csg pressure 500 psi. DWC \$27,443. CWC \$397,621.

DIAMOND 7 FEDERAL COM NO. 1

660' FSL & 1,980' FEL

Sec 7, T25S, R34E

LEA Co., NM

Spud Date: 07/18/92

ENRON OIL & GAS CO ANY

DEV W/O: 15,623' MORRIS

PITCHFORK RANCH Field

EOG: 95.3183% WI 80.4583% NRI

AFE No.: 10-1163

DHC: 0; CWC: 330,000

05/11/97 Day 16. Depth 12,630'. PO-Waiting to continue stripping. 4 hrs flow well up annulus, wait on snubbing unit, 7-1/2 hrs RU Halliburton snubbing unit. Start stripping out of hole at 5:30 p.m., 5/11/97. 8-1/2 hrs strip 123 jts of 4-1/2" tbg. 4 hrs well starting flowing up through tbg, install TIW valve, first thought CIBP must have failed, RU to see if tbg could be blown down. After being blown down tbg was dead. Will continue stripping operations. Flow back information. 23 hrs flowing up annulus, recovery 149 BW, 336 BO, Total recovery 1020 BW, 561 BO, chk reading 48/64, last pressure reading 150 psi, 900 BLTR. DWC \$14,692. CWC \$412,313.

05/12/97 Day 17. Depth 12,630' PBD. PO-RD snubbing unit. 7-5/8" csg 2 13,298'. 1 hr shut off annulus, watch for flow up tbg, no flow up tbg, CIBP holding. 4-3/4 hrs strip 4-1/2" tbg out of hole. 2-1/4 hrs tbg unloaded for the second time. 4-1/2 hrs wait on perforating truck. Clean oil off rig floor. 1-3/4 hrs punch two holes in 3-1/8" 12.95# PH-6 tbg just above CIBP, shot depth 5,107', pump 40 bbls, FW down tbg, hole went on vacuum. 9-3/4 hrs strip out of hole with tbg. Add FW down tbg after pulling 5 jts, no other problems with flow back. Total barrels of fresh water pumped down tbg, 180 bbls. Last item out of hole was the 3-1/2" EUE x 2-7/8" crossover on btm of 3-1/2" EUE tbg. Flow back information:
17 hrs flowing up annulus, BW 67, BO 156, Total water 1087 bbls, total oil 717 bbls. After adding 56 bbls down tbg, annulus pressure went from 100 psi to 0 and stayed there. DWC \$47,598. CWC \$459,911.

05/13/97 Day 18. Depth 12,630' PBD. PO-Rig released/flowing well. 8 hrs RD and load out Halliburton's snubbing unit. Nipple down blowout preventer stack, left one set of blowout preventers on hole.
RELEASED McVay rig #8 @ 2:00 p.m., 5-12-97
Flow information. Well SI for 11 hrs. 5:00 p.m., pressure build up to 1000 psi, open well on 28/64" chk, open well to 1" at 10:00 p.m. 24 hrs recovery 104 BW, 174 BO. Last hr 4 BW, 16 BO, 10 psi, 1" chk. Total recovery 1191 BW, 891 BO. 1195 load water, 104 BW recovered, 1091 BLWTR. DWC \$15,715. CWC \$475,626.

05/14/97 SWI @ 0600 hrs. 11 hrs RD&MO McVay Rig #8. SICP @ 1300 psi. 13 hrs opened csg to tank @ 1700 hrs with 1300 psi. FCP dropped to TSTM on FO chk. Last hr rec 4 BW, 4 BO. Rec 160 BW, 80 BO past 13 hrs. TLR 1351 BW, 971 BO. TLTR 931 BW. DWC \$1,300. CWC \$476,926.

Page 11
DIAMOND 7 FEDERAL COM NO. 1
660' FSL & 1,980' FEL
Sec 7, T25S, R34E
LEA Co., NM
Spud Date: 07/18/92

ENRON OIL & GAS CO ANY
DEV W/O: 15,623' MORROW
PITCHFORK RANCH Field
EOG#: 95.3183% WI 80.4583% NRI
AFE No.: 10-1163
DHC: 0; CWC: 330,000

05/16/97 6 hrs flow to tank on FO chk. FCP 50-30 psi. Rec 344 bbls (262 BO, 82 BW) last 26 hrs to 9:00 a.m., 5/15/97. TLR 1233 BO, 1433 BW. TLTR 849 BW. Dress location set 2 anchors. Offload and strap 2-7/8" tbg. Move in Yale E. Key. 4 hrs pump 120 bbls PW down 7-5/8" csg. Initially on vacuum. Csg started flowing in 30 seconds. Load csg with total of 375 bbls PW (8,445'). Csg continued to flow. Pumped total of 425 bbls PW (9,570'). Csg pressured to 1000 psi then dropped to 130 psi and stabilized. 4 hrs NU 11" 5000 psi x 6" 3000 psi DSA. RU HES slickline. SICP 130 psi. RIH with 2.76" gauge ring. Tagged top of on/off tool @ 12,220'. Slickline meas. tbg meas 12,215'. POOH. Shut and locked blind rams. RD HES. Apparent FL @ 2,500'. TLTR 1274 bbls. 10 hrs opened csg to tank on 32/64" with 190 psi. Gas at surface. Csg blew donw. SI 2 hrs. SICP 190 psi. Open to tank. Continued slight flow with FCP TSTM. Rec 68 BW. TLR 1233 BO, 1501 BW. TLTR 1206 BW. Released all equipment. Returned tree and tbg head to Cooper. DWC \$20,774. CWC \$497,700.

05/17/97 24 hrs flow, 127 BO, 64/64" chk, 30 CP, 99 BW, 1600 cum BW, 1101 BLWTR. CWC \$497,700.

05/18/97 24 hrs pump 89 BO, 64/64" chk, 0-200 CP, 353 BLW, 1953 cum BLW, 754 BLWTR. CWC \$497,700.

05/19/97 24 hrs flow, 299 MCF, 199 BO, 17/64" chk, 90 CP, 14 BLW, 1967 cum BLW, 740 BLWTR. CWC \$497,700.

05/20/97 24 hrs flow, 277 MCF, 185 BO, 17/64" chk, 140 CP, 6 BLW, 1973 cum BLW, 734 BLWTR. CWC \$497,700.

05/21/97 24 hrs flow, 263 MCF, 173 BO, 17/64" chk, 70 CP, 6 BLW, 1979 cum BLW, 728 BLWTR. CWC \$497,700.

05/22/97 24 hrs flow, 221 MCF, 171 BO, 17/64" chk, 110 CP, 0 BLW, 1979 cum BLW, 728 BLWTR, 40 LP. CWC \$497,700.

05/23/97 24 hrs flow, 234 MCF, 151 BO, 17/64" chk, 70 CP, 0 BLW, 1979 cum BLW, 728 BLWTR, 42 LP. CWC \$497,700.

05/24/97 24 hrs flow, 207 MCF, 204 BO, 17/64" chk, 140 CP, 14 BLW, 1993 cum BLW, 714 BLWTR, 32 LP. CWC \$497,700.

05/25/97 24 hrs flow, 215 MCF, 95 BO, 17/64" chk, 170 CP, 3 BLW, 1996 cum BLW, 711 BLWTR, 33 LP. CWC \$497,700.

05/26/97 24 hrs flow, 233 MCF, 175 BC, 17/64" chk, 190 CP, 18 BLW, 2014 cum BLW, 693 BLWTR, 33 LP. CWC \$497,700.

DIAMOND 7 FEDERAL COM NO. 1

660' FSL & 1,980' FEL

Sec 7, T25S, R34E

LEA Co., NM

Spud Date: 07/18/92

ENRON OIL & GAS CO ANY
 DEV W/O: 15,623' MORROW
 PITCHFORK RANCH Field
 EOG%: 95.3183% WI 80.4583% NRI
 AFE No.: 10-1163
 DHC: 0; CWC: 330,000

05/27/97 24 hrs flow, 188 MCF, 184 BO, 17/64" chk, 90 CP, 9 BLW, 2023 cum BLW, 684 BLWTR, 35 LP. CWC \$497,700.

05/28/97 24 hrs flow, 217 MCF, 183 BC, 17/64" chk, 130 CP, 6 BLW, 2029 cum BLW, 29 BLWTR. CWC \$497,700.

05/29/97 24 hrs flow, 215 MCF, 131 BO, 17/64" chk, 120 CP, 0 BW, 2029 cum BW, 678 BLWTR, 25 LP. CWC \$497,700.

05/30/97 24 hrs flow, 211 MCF, 111 BC, 17/64" chk, 110 CP, 4 BLW, 2033 cum BLW, 674 BLWTR, 24 LP. CWC \$497,700.

05/31/97 24 hrs flow, 205 MCF, 135 BC, 17/64" chk, 120 CP, 3 BLW, 2036 cum BLW, 671 BLWTR, 24 LP. CWC \$497,700.

06/01/97 24 hrs flow, 211 MCF, 120 BC, 17/64" chk, 80 CP, 3 BLW, 2039 cum BLW, 668 BWLTR, 24 LP. CWC \$497,700.

06/02/97 24 hrs flow, 215 MCF, 140 BC, 17/64" chk, 120 CP, 5 BLW, 2044 cum BLW, 663 BWLTR, 24 LP. CWC \$497,700.

06/03/97 24 hrs flow, 209 MCF, 111 BC, 17/64" chk, 100 CP, 3 BLW, 2047 cum BLW, 660 BLWTR, 24 LP. CWC \$497,700.

06/06/97 This well was completed in the upper lobe of the Morrow "C" sand from 15,352' to 15,358' flowing 1800 MCFD with 760 psig FTP in November 1992. In December 1995, the well "loaded up" with produced water and production ceased. In November 1996, after several attempts to regain production, the Morrow "C" zone was abandoned and recompleted in the Third Bone Spring sand from 12,306' to 12,384' OA. After sand fracture treatment the well is currently flowing 215 MCFD, 175 BCPD and 5 BWPD on a 17/64" chk with 120 FCP. The estimated well cost is \$563,000 compared to the AFE cost of \$330,000.

FINAL REPORT

07/23/97 2 hrs flow to sales. FCP 40-60 psi. MI Yale E. Key. Made up 11" 5,000 psi x 7-1/16" 5000 psi tbg spool and 7-1/16" 5000 psi BOP's and set on ground for later installation. Break 11" 5000 psi x 11" 5000 psi spool + 11" 5,000 psi BOP's. That is now on the well. 1 hr FCP 55 psi. Pumped 40 bbls down 7-5/8" csg and pressure increased to 300 psi. Pumped total of 60 bbls 9.0 ppg PW and csg pressured to 1050 psi. SICP dropped to 850 psi in 5 min, 600 psi in 25 min and stabilized. Bled csg down. Return to sales. Tighten spool and BOP's. 5 hrs RU Yale E. Key. WO and install 2-7/8" rams in 11" 5,000# BOP. NU DSA and stripper. SDON. DWC \$5,635. CWC \$503,335.

Page 13
DIAMOND 7 FEDERAL COM NO. 1
660' FSL & 1,980' FEL
Sec 7, T25S, R34E
LEA Co., NM
Spud Date: 07/18/92

ENRON OIL & GAS CO ANY
DEV W/O: 15,623' MORR.
PITCHFORK RANCH Field
EOG: 95.3183% WI 80.4583% NRI
AFE No.: 10-1163
DHC: 0; CWC: 330,000

07/24/97 24 hrs flow to sales. FCP 40 psi - 140 psi. RD Yale E. Key.
Move to Hallwood 1 Fed No. 3. MIRU Cobra WS. DWC \$1,930. CWC
\$505,265.

07/25/97 9 hrs flow to sales. FCP 80 psi -130 psi. RU floor. Flow 7-5/8"
csg to tank. Strip in hole with 2-7/8" mud anchor, perf sub, pump
out tbg disc, SN and 3 jts 2-7/8" tbg. Shut pipe rams and remove
stripper. Made up 2-7/8" x 7-5/8" TAC. FCP 30 psi. Slug csg with
3 bbls 10.0 ppg brine. Open pipe rams and RIH with TAC. NU
stripper. Returns to sales. Load tbg with 9.0 ppg PW. Strip
2-7/8" tbg in hole to 7,340'. Loaded tbg after 20 jts then every
50 jts. FCP 100 psig loaded tbg and pumped out disc with 1100
psi. Displace 2-7/8" x 7-5/8" annulus to tank with 250 bbls 9.0
ppg PW. LTR 295 bbls. 1 hr PU 11" 5,000# BOP's and 11" 5,000#
spool. Set in split bowl and set slips. Strip off BOP's and
spool. Strip on 11" 5,000# x 7-1/16" 5,000# tbg head and 7-1/16"
5,000# BOP's. NU tbg head. 3-1/2 hrs RIH with tbg to 12,183.53'
total of 383 jts. No tbg displacement. ND BOP's. No wraparound.
Screw on 2-9/16" 5,000# tree and NU. Did not set TAC. Left well
shut in. TLTR 295 bbls. SN @ 12,145.11'. EOT @ 12,183.53'.
Perf @ 12,215'. Bone Spring perfs 12,306' - 12,384'. DWC
\$64,605. CWC \$569,870.

07/26/97 Swab well. Made 10 runs well started to flow to frac tank.
Recovered 295 BW. WELL TO SALES @ 4:00 p.m. 283 MCF, TP 150-180
psi on 20/64" chk, CP 30, LP 42 psi. CWC \$569,870.

07/27/97 24 hrs flow 160 MCF, 116 BC, 24/64" chk, 220 FTP, 1050 CP, 154 BW.
CWC \$569,870.

07/28/97 SITP 750, SICP 1475. CWC \$569,870.

07/29/97 SITP 1400, SICP 1750. CWC \$569,870.

07/30/97 24 hrs flow, 178 MCF, 123 BC, 6/64" chk, 1000 FTP, 1600 CP, 52 BW.
CWC \$569,870.

07/31/97 24 hrs flow, 205 MCF, 124 BC, 8/64" chk, 940 FTP, 1500 CP, 17 BW.
CWC \$569,870.

08/01/97 24 hrs flow 178 MCF, 100 BC, 8/64" chk, 900 FTP, 1410 CP, 15 BW.
CWC \$569,870.

08/02/97 24 hrs flow, 186 MCF, 111 BC, 8/64" chk, 800 FTP, 1580 CP, 44 BW.
CWC \$569,870.

08/03/97 24 hrs flow, 188 MCF, 114 BC, 8/64" chk, 720 FTP, 1350 CP. CWC
\$569,870.

DIAMOND 7 FEDERAL COM NO. 1

660' FSL & 1,980' FEL

Sec 7, T25S, R34E

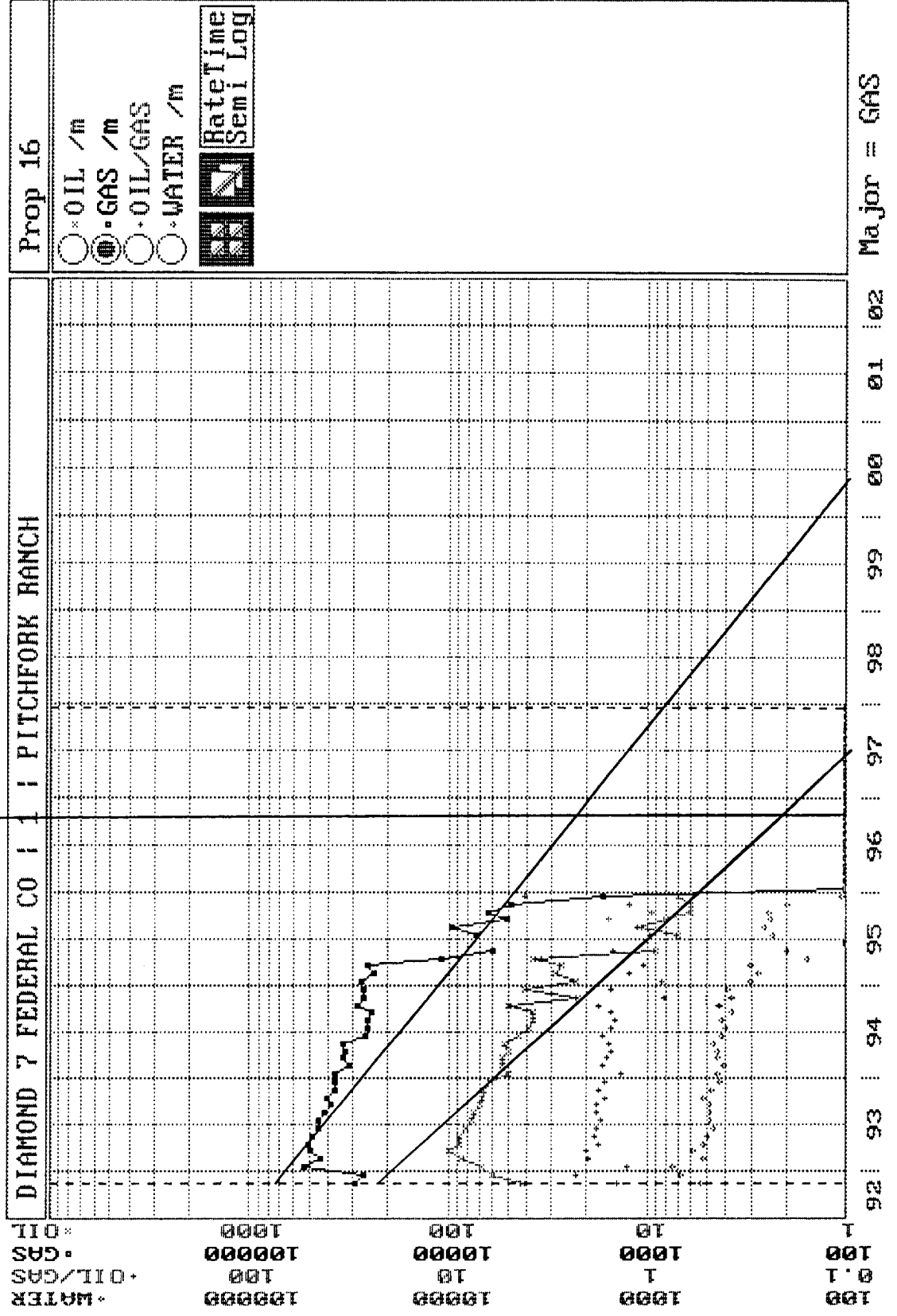
LEA Co., NM

Spud Date: 07/18/92

ENRON OIL & GAS CO' ANY
 DEV W/O: 15,623' MORR.
 PITCHFORK RANCH Field
 EOG: 95.3183% WI 80.4583% NRI
 AFE No.: 10-1163
 DHC: 0; CWC: 330,000

08/04/97	24 hrs flow, 177 MCF, 112 BC, 8/64" chk, 720 FTP, 1350 CP, 6 BLW. CWC \$569,870.
08/05/97	24 hrs flow, 156 MCF, 106 BC, 8/64" chk, 760 FTP, 1400 CP, 3 BW. CWC \$569,870.
08/06/97	24 hrs flow, 206 MCF, 135 BC, 9/64" chk, 700 FTP, 1300 CP. CWC \$569,870.
08/07/97	24 hrs flow, 154 MCF, 108 BC, 9/64" chk, 680 FTP, 1300 CP, LP 44. CWC \$569,870.
08/08/97	24 hrs flow, 151 MCF, 88 BC, 9/64" chk, 680 FTP, 1300 CP. CWC \$569,870.
08/09/97	24 hrs flow, 155 MCF, 100 BC, 9/64" chk, 680 FTP, 1380 CP. CWC \$569,870.
08/10/97	24 hrs flow, 154 MCF, 105 BC, 9/64" chk, 680 FTP, 1400 CP. CWC \$569,870.
08/11/97	24 hrs flow, 153 MCF, 101 BC, 9/64" chk, 680 FTP, 1420 CP. CWC \$569,870.
08/12/97	24 hrs flow, 149 MCF, 114 BC, 9/64" chk, 680 FTP, 1400 CP, 6 BW. CWC \$569,870.
08/13/97	24 hrs flow, 138 MCF, 75 BC, 9/64" chk, 700 FTP, 1,460 CP, 14 BW.
08/14/97	24 hrs flow, 143 MCF, 157 BC, 9/64" chk, 700 FTP, 1480 CP, 44 LP. CWC \$569,870.
08/15/97	24 hrs flow, 172 MCF, 112 BC, 9/64" chk, 640 FTP, 1,450 CP, 9 BLW, 47 LP. CWC \$569,870.
08/16/97	24 hrs flow, 157 MCF, 118 BO, 9/64" chk, 560 FTP, 1,450 CP, 6 BLW, 44 LP. Oubcg chk to 8/64". CWC \$569,870.
08/17/97	24 hrs flow, 134 MCF, 84 BC, 8/64" chk, 600 FTP, 1530 CP, 6 BLW, 46 LP. CWC \$569,870.
08/18/97	24 hrs flow, 167 MCF, 125 BO, 9/64" CHK, 600 FTP, 1,510 CP, 11 BLW, LP 42. CWC \$569,870.
03/19/97	24 hrs flow, 141 MCF, 98 BO, 9/64" chk, 600 FTP, 1500 CP, 6 BW, 48 LP. CWC \$569,870.

Begin Workover 10/31/96



Diamond 7 Fed. No. 1

Future Production Before Workover

IP Rate at WO on 11/96

Oil 6 BOPM

Gas 4900 mcf/mo

Decline(exp)

67 %/yr

63 %/yr

Date	Oil BOPM	Gas MCF/Mo
1/15/98	6.0	4900.0
2/15/98	5.7	4649.4
3/15/98	5.4	4411.6
4/15/98	5.1	4186.0
5/15/98	4.8	3971.9
6/15/98	4.5	3768.7
7/15/98	4.3	3576.0
8/15/98	4.1	3393.1
9/15/98	3.8	3219.5
10/15/98	3.6	3054.9
11/15/98	3.4	2898.6
12/15/98	3.2	2750.4
1/15/99	3.1	2609.7
2/15/99	2.9	2476.2
3/15/99	2.7	2349.6
4/15/99	2.6	2229.4
5/15/99	2.5	2115.4
6/15/99	2.3	2007.2
7/15/99	0.0	1904.5
8/15/99	0.0	1807.1
9/15/99	0.0	1714.7
10/15/99	0.0	1627.0
11/15/99	0.0	1543.8
12/15/99	0.0	1464.8
1/15/00	0.0	1389.9
2/15/00	0.0	1318.8
3/15/00	0.0	1251.4
4/15/00	0.0	1187.4
5/15/00	0.0	1126.6
6/15/00	0.0	1069.0
7/15/00	0.0	1014.3
8/15/00	0.0	962.5
9/15/00	0.0	913.2
10/15/00	0.0	866.5
11/15/00	0.0	822.2
12/15/00	0.0	780.2
1/15/01	0.0	740.3
2/15/01	0.0	702.4
3/15/01	0.0	666.5
4/15/01	0.0	632.4
5/15/01	0.0	600.0
6/15/01	0.0	569.3
7/15/01	0.0	540.2

Date	Oil BOPM	Gas MCF/Mo
8/15/01	0.0	512.6
9/15/01	0.0	486.4
10/15/01	0.0	461.5
11/15/01	0.0	437.9
12/15/01	0.0	415.5