

Submit to Appropriate
District Office
State Lease - 6 copies
Fee Lease - 5 copies

State of New Mexico
Energy, Minerals and Natural Resources Department

Form C-101
Revised 1-1-89

OIL CONSERVATION DIVISION

P.O. Box 2088
Santa Fe, New Mexico 87504-2088

DISTRICT I
P.O. Box 1980, Hobbs, NM 88240

DISTRICT II
P.O. Drawer DD, Artesia, NM 88210

DISTRICT III
1000 Rio Brazos Rd., Aztec, NM 87410

API NO. (assigned by OCD on New Wells)

30-025-31996

5. Indicate Type of Lease

STATE ☒

FEE ☐

6. State Oil & Gas Lease No.

B-9613

APPLICATION FOR PERMIT TO DRILL, DEEPEN, OR PLUG BACK

1a. Type of Work:

DRILL ☒

RE-ENTER ☐

DEEPEN ☐

PLUG BACK ☐

b. Type of Well:

OIL

WELL ☒

GAS

WELL ☐

OTHER ☐

SINGLE

ZONE ☒

MULTIPLE

ZONE ☐

7. Lease Name or Unit Agreement Name

WEST DOLLARHIDE DRINKARD UNIT

2. Name of Operator

TEXACO EXPLORATION AND PRODUCTION INC.

8. Well No.

132

3. Address of Operator

P. O. Box 3109, Midland, Texas 79702

9. Pool name or Wildcat

DOLLARHIDE TUBB DRINKARD

4. Well Location

Unit Letter D : 115 Feet From The NORTH Line and 100 Feet From The WEST Line

Section 33 Township 24-SOUTH Range 38-EAST NMPM LEA County

10. Proposed Depth

7680'

11. Formation

DRINKARD

12. Rotary or C.T.

ROTARY

13. Elevations (Show whether DP, RT, GR, etc.)

GR-3201'

14. Kind & Status Plug. Bond

BLANKET

15. Drilling Contractor

TO BE SELECTED

16. Approx. Date Work will start

JUNE 20, 1993

17. PROPOSED CASING AND CEMENT PROGRAM

SIZE OF HOLE	SIZE OF CASING	WEIGHT PER FOOT	SETTING DEPTH	SACKS OF CEMENT	EST. TOP
20	16	65#	40'	REDI-MIX	SURFACE
14 3/4	11 3/4	42#	1215'	700	SURFACE
11 (OPTIONAL)	8 5/8	32#	4200'	1350	SURFACE
7 7/8	5 1/2	15.5# & 17#	7680'	900	3000'

CEMENTING PROGRAM: CONDUCTOR - REDIMIX.

SURFACE CASING - 500 SX CLASS C w/ 4% GEL & 2% CaCl₂ (13.5ppg, 1.74cf/s, 9.1gw/s). F/B 200 SX CLASS C w/ 2% CaCl₂ (14.8ppg, 1.32cf/s, 6.3gw/s).

INTERMEDIATE CASING - 950 SX 35/65 POZ CLASS H w/ 6% GEL, 5% SALT & 1/4# FLOCELE (12.8ppg, 1.94cf/s, 10.4gw/s). F/B 400 SX CLASS H w/ 2% CaCl₂ (15.6ppg, 1.19cf/s, 5.2gw/s).

PRODUCTION CASING - 400 SX 35/65 POZ CLASS H w/ 6% GEL, 5% SALT & 1/4# FLOCELE (12.8ppg, 1.94cf/s, 10.4gw/s). F/B 500 SX CLASS H (15.6ppg, 1.18cf/s, 5.2gw/s).

*INTERMEDIATE CASING WILL NOT BE SET IF NO WATER FLOW IS ENCOUNTERED AND PRODUCTION CEMENT WILL BE ADJUSTED.

THERE ARE NO OTHER OPERATORS IN THIS QUARTER QUARTER SECTION.
UNORTHODOX LOCATION - EXCEPTION HAS BEEN REQUESTED (COPY ATTACHED).

IN ABOVE SPACE DESCRIBE PROPOSED PROGRAM: IF PROPOSAL IS TO DEEPEN OR PLUG BACK, GIVE DATA ON PRESENT PRODUCTIVE ZONE AND PROPOSED NEW PRODUCTIVE ZONE. GIVE BLOWOUT PREVENTER PROGRAM, IF ANY.

I hereby certify that the information above is true and complete to the best of my knowledge and belief.

SIGNATURE C. P. Basham / cwb TITLE DRILLING OPERATIONS MANAGER DATE 06-02-93

TYPE OR PRINT NAME C. P. BASHAM

TELEPHONE NO. (915) 688-4620

(This space for State Use)

ORIGINAL FILED IN

JUN - 4 1993

APPROVED BY _____ TITLE _____ DATE _____

CONDITIONS OF APPROVAL, IF ANY:

Permit Expires 6 Months From Approval
Date Unless Drilling Underway.

Submit to Appropriate
District Office
State Lease - 4 copies
Fee Lease - 3 copies

State of New Mexico
Energy, Minerals and Natural Resources Department

Form C-102
Revised 1-1-89

DISTRICT I
P.O. Box 1500, Hobbs, NM 88240

OIL CONSERVATION DIVISION
P.O. Box 2088
Santa Fe, New Mexico 87504-2088

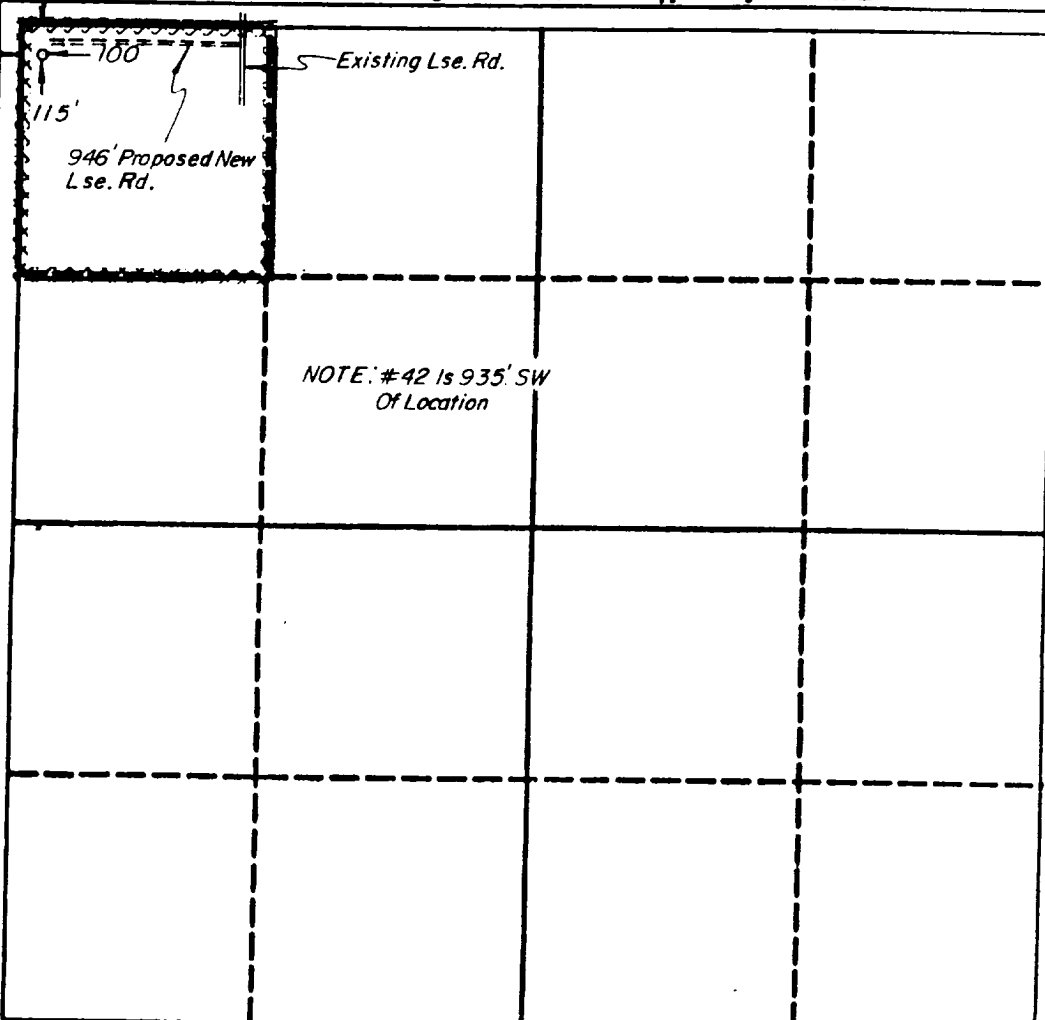
DISTRICT II
P.O. Drawer DD, Artesia, NM 88210

DISTRICT III
1000 Elm Avenue Rd., Aztec, NM 87410

WELL LOCATION AND ACREAGE DEDICATION PLAT
All Distances must be from the outer boundaries of the section

Operator TEXACO EXPLORATION & PRODUCTION INC.			Lease WEST DOLLARHIDE DRINKARD UNIT		Well No. 132
Unit Letter D	Section 33	Township 24 SOUTH	Range 38 EAST	County LEA	
Actual Footage Location of Well: 115 feet from the NORTH line and 100 feet from the WEST line					
Ground level Elev. 3201'	Producing Formation (ABO & DRINKARD) TUBB DRINKARD		Pool DOLLARHIDE TUBB-DRINKARD		Dedicated Acreage: 40 Acres

- Outline the acreage dedicated to the subject well by colored pencil or ballpoint pen on the plat below.
- If more than one lease is dedicated to the well, outline each and identify the ownership thereof (both as to working interest and royalty).
- If more than one lease of different ownership is dedicated to the well, have the interest of all owners been consolidated by communitization, unitization, forced-pooling, etc.?
☐ Yes ☐ No If answer is "yes" type of consolidation _____
If answer is "no" list the owners and trust descriptions which have actually been consolidated. (Use reverse side of this form if necessary.)
No allowable will be assigned to the well until all interests have been consolidated (by communitization, unitization, forced-pooling, or otherwise) or until a non-standard unit, eliminating each interest, has been approved by the Division.



OPERATOR CERTIFICATION

I hereby certify that the information contained herein is true and complete to the best of my knowledge and belief.

Signature

R. D. MARIOTT

Printed Name

R. D. MARIOTT

Position

DIVISION SURVEYOR

Company TEXACO EXPLORATION & PRODUCTION INC.

Date

May 19, 1993

SURVEYOR CERTIFICATION

I hereby certify that the well location shown on this plat was plotted from field notes of actual surveys made by me or under my supervision, and that the same is true and correct to the best of my knowledge and belief.

Date Surveyed

May 19, 1993

Signature & Seal of Professional Surveyor

Signature of Professional Surveyor

Certificate No.

4882



Texaco Exploration and Production Inc
Midland Production Division

500 N. Loraine
Midland TX 79701

P. O. Box 3109
Midland TX 79702

May 26, 1993

GOV - STATE AND LOCAL GOVERNMENTS

Unorthodox Locations

West Dollarhide Drinkard Unit

Well Nos. 132, 133, 134, 135, 136, & 138

Lea County, New Mexico

State of New Mexico

Energy and Minerals Department

Oil Conservation Division

P. O. Box 2088

Santa Fe, New Mexico 87501-2088

Attention: Mr. Michael E. Stogner

Gentlemen:

An exception, by administrative approval, to Rule 104 F.I. is requested for Texaco Exploration and Production Inc.'s West Dollarhide Drinkard Unit Well Nos. 132, 133, 134, 135, 136, and 138. The wells are located as follows:

Well No. 132:	115'	FNL & 100'	FWL,	Sec.33,	T-24-S,	R-38-E
Well No. 133:	110'	FSL & 1330'	FEL,	Sec.29,	T-24-S,	R-38-E
Well No. 134:	1700'	FNL & 1300'	FEL,	Sec.30,	T-24-S,	R-38-E
Well No. 135:	1450'	FNL & 2400'	FEL,	Sec.30,	T-24-S,	R-38-E
Well No. 136:	200'	FNL & 2350'	FEL,	Sec.30,	T-24-S,	R-38-E
Well No. 138:	2630'	FNL & 1450'	FWL,	Sec.19,	T-24-S,	R-38-E

The wells must be drilled in these locations to ensure proper development on 10-acre spacing. Wells drilled previously on 10-acre spacing have proven to be viable wells. These wells will be completed in the Drinkard formation.

It should be noted that there are no affected offset operators to Well Nos. 132, 133, 134, 135, 136, or 138. Well Nos. 134, 135, and 136 are on Federal Minerals.

Attached are Forms C-102 for each well and a lease plat showing the existing wells, and locations of the subject wells.

Yours very truly,

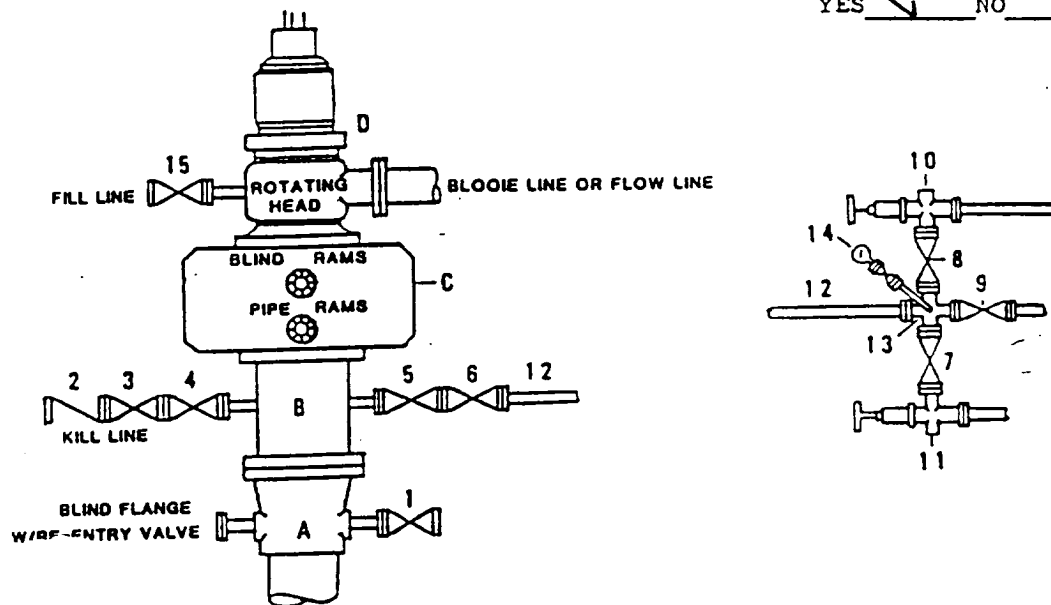
C. P. Basham / cwh

C. P. Basham
Drilling Operations Manager

CWH:cwh
cc: NMOCD, P. O. Box 1980, Hobbs, NM 88240
cc: BLM, P. O. Box 1778, Carlsbad, NM 88220

**DRILLING CONTROL
CONDITION II-B 3000 WP
FOR AIR DRILLING OR
WHERE NITROGEN OR AIR BLOWS ARE EXPECTED**

H₂S TRIM REQUIRED
YES ☒ NO ☐



**DRILLING CONTROL
MATERIAL LIST - CONDITION II - B**

- A Texaco Wellhead
- B 3000# W.P. drilling spool with a 2" minimum flanged outlet for kill line and 3" minimum flanged outlet for choke line.
- C 3000# W.P. Dual ram type preventer, hydraulic operated with 1" steel, 3000# W.P. control lines (where sub-structure height is adequate, 2 - 3000# W.P. single ram type preventers may be utilized).
- D Rotating Head with fill up outlet and extended Bloop Line.
- 1,3,4, 7,8, 2" minimum 3000# W.P. flanged full opening steel gate valve, or Halliburton Lo Torc Plug valve.
- 2 2" minimum 3000# W.P. back pressure valve.
- 5,6,9 3" minimum 3000# W.P. flanged full opening steel gate valve, or Halliburton Lo Torc Plug valve.
- 12 3" minimum schedule 80, Grade "B", seamless line pipe.
- 13 2" minimum x 3" minimum 3000# W.P. flanged cross.
- 10,11 2" minimum 3000# W.P. adjustable choke bodies.
- 14 Cameron Mud Gauge or equivalent (location optional in choke line).
- 15 2" minimum 3000# W.P. flanged or threaded full opening steel gate valve, or Halliburton Lo Torc Plug valve.



TEXACO, INC.
MIDLAND DIVISION
MIDLAND, TEXAS



SCALE	DATE	EST. NO.	DRG. NO.
DRAWN BY:			
CHECKED BY:			

EXHIBIT C