

Submit to Appropriate  
District Office  
State Lease - 6 copies  
Fee Lease - 5 copies

State of New Mexico  
Energy, Minerals and Natural Resources Department

Form C-101  
Revised 1-1-89

OIL CONSERVATION DIVISION

P.O. Box 2088  
Santa Fe, New Mexico 87504-2088

DISTRICT I  
P.O. Box 1980, Hobbs, NM 88240

DISTRICT II  
P.O. Drawer DD, Artesia, NM 88210

DISTRICT III  
1000 Rio Brazos Rd., Aztec, NM 87410

API NO. (assigned by OCD on New Wells)

30-025-31998

5. Indicate Type of Lease

STATE ☒

FEE ☐

6. State Oil & Gas Lease No.

B-9613

APPLICATION FOR PERMIT TO DRILL, DEEPEN, OR PLUG BACK

a. Type of Work:

DRILL ☒

RE-ENTER ☐

DEEPEN ☐

PLUG BACK ☐

b. Type of Well:

OIL

WELL ☒

GAS

WELL ☐

OTHER ☐

SINGLE

ZONE ☒

MULTIPLE

ZONE ☐

7. Lease Name or Unit Agreement Name

WEST DOLLARHIDE DRINKARD UNIT

Name of Operator

TEXACO EXPLORATION AND PRODUCTION INC.

8. Well No.

133

Address of Operator

P. O. Box 3109, Midland, Texas 79702

9. Pool name or Wildcat

DOLLARHIDE TUBB DRINKARD

Well Location

Unit Letter

O

: 110

Feet From The SOUTH

Line and

1330

Feet From The EAST

Line

Section 29

Township 24-SOUTH

Range 38-EAST

NMPM LEA

County

10. Proposed Depth

7680'

11. Formation

DRINKARD

12. Rotary or C.T.

ROTARY

13. Elevations (Show whether DF, RT, GR, etc.)

GR-3207'

14. Kind & Status Plug. Bond

BLANKET

15. Drilling Contractor

TO BE SELECTED

16. Approx. Date Work will start

JUNE 20, 1993

7.

PROPOSED CASING AND CEMENT PROGRAM

SIZE OF HOLE	SIZE OF CASING	WEIGHT PER FOOT	SETTING DEPTH	SACKS OF CEMENT	EST. TOP
20	16	65#	40'	REDI-MIX	SURFACE
14 3/4	11 3/4	42#	1230'	700	SURFACE
11 (OPTIONAL)	8 5/8	32#	4200'	1350	SURFACE
7 7/8	5 1/2	15.5# & 17#	7680'	900	3000'

CEMENTING PROGRAM: CONDUCTOR - REDIMIX.

SURFACE CASING - 500 SX CLASS C w/ 4% GEL & 2% CaCl<sub>2</sub> (13.5ppg, 1.74cf/s, 9.1gw/s). F/B 200 SX CLASS C w/ 5% CaCl<sub>2</sub> (14.8ppg, 1.32cf/s, 6.3gw/s).

INTERMEDIATE CASING - 950 SX 35/65 POZ CLASS H w/ 6% GEL, 5% SALT & 1/4# FLOCELE (12.8ppg, 1.94cf/s, 10.1gw/s). F/B 400 SX CLASS H w/ 2% CaCl<sub>2</sub> (15.6ppg, 1.19cf/s, 5.2gw/s).

PRODUCTION CASING - 400 SX 35/65 POZ CLASS H w/ 6% GEL, 5% SALT & 1/4# FLOCELE (12.8ppg, 1.94cf/s, 10.1gw/s). F/B 500 SX CLASS H (15.6ppg, 1.18cf/s, 5.2gw/s).

INTERMEDIATE CASING WILL NOT BE SET IF NO WATER FLOW IS ENCOUNTERED AND PRODUCTION CEMENT WILL BE ADJUSTED.

THERE ARE NO OTHER OPERATORS IN THIS QUARTER QUARTER SECTION.

ORTHODOX LOCATION - EXCEPTION HAS BEEN REQUESTED (COPY ATTACHED).

IN ABOVE SPACE DESCRIBE PROPOSED PROGRAM: IF PROPOSAL IS TO DEEPEN OR PLUG BACK, GIVE DATA ON PRESENT PRODUCTIVE ZONE AND PROPOSED NEW PRODUCTIVE ZONE. GIVE BLOWOUT PREVENTER PROGRAM, IF ANY.

I hereby certify that the information above is true and complete to the best of my knowledge and belief.

SIGNATURE C. P. Basham / cw# TITLE DRILLING OPERATIONS MANAGER DATE 06-02-93

TYPE OR PRINT NAME C. P. BASHAM

TELEPHONE NO. (915) 688-4620

(This space for State Use)

ORIGINAL SIGNED BY JOHN SEXTON  
DISTRICT III MANAGER

APPROVED BY \_\_\_\_\_ TITLE \_\_\_\_\_ DATE \_\_\_\_\_

CONDITIONS OF APPROVAL, IF ANY:

Permit Expires 6 Months From Approval  
Date Unless Drilling Underway.

JUN - 4 1993

RECEIVED

JUN 02 1993

OCR WORKS OFFICE

Submit to Appropriate  
District Office  
State Lease - 4 copies  
Fee Lease - 3 copies

State of New Mexico  
Energy, Minerals and Natural Resources Department

Form C-102  
Revised 1-1-99

OIL CONSERVATION DIVISION

P.O. Box 2088  
Santa Fe, New Mexico 87504-2088

DISTRICT I  
P.O. Box 1980, Hobbs, NM 88240

DISTRICT II  
P.O. Drawer DD, Artesia, NM 88210

DISTRICT III  
1000 Rio Arriba Rd., Aztec, NM 87410

WELL LOCATION AND ACREAGE DEDICATION PLAT

All Distances must be from the outer boundaries of the section

Operator TEXACO EXPLORATION & PRODUCTION INC.			Lease WEST DOLLARHIDE DRINKARD UNIT		Well No. 133
Unit Letter O	Section 29	Township 24 SOUTH	Range 38 EAST	County LEA	
Actual Footage Location of Well: 110 feet from the SOUTH line and 1330 feet from the EAST line					
Ground level Elev. 3207'	Producing Formation (ABO & DRINKARD)		Foot DOLLARHIDE TUBB-DRINKARD		Dedicated Acreage 40 Acres

1. Outline the acreage dedicated to the subject well by colored pencil or indelible marks on the plat below.

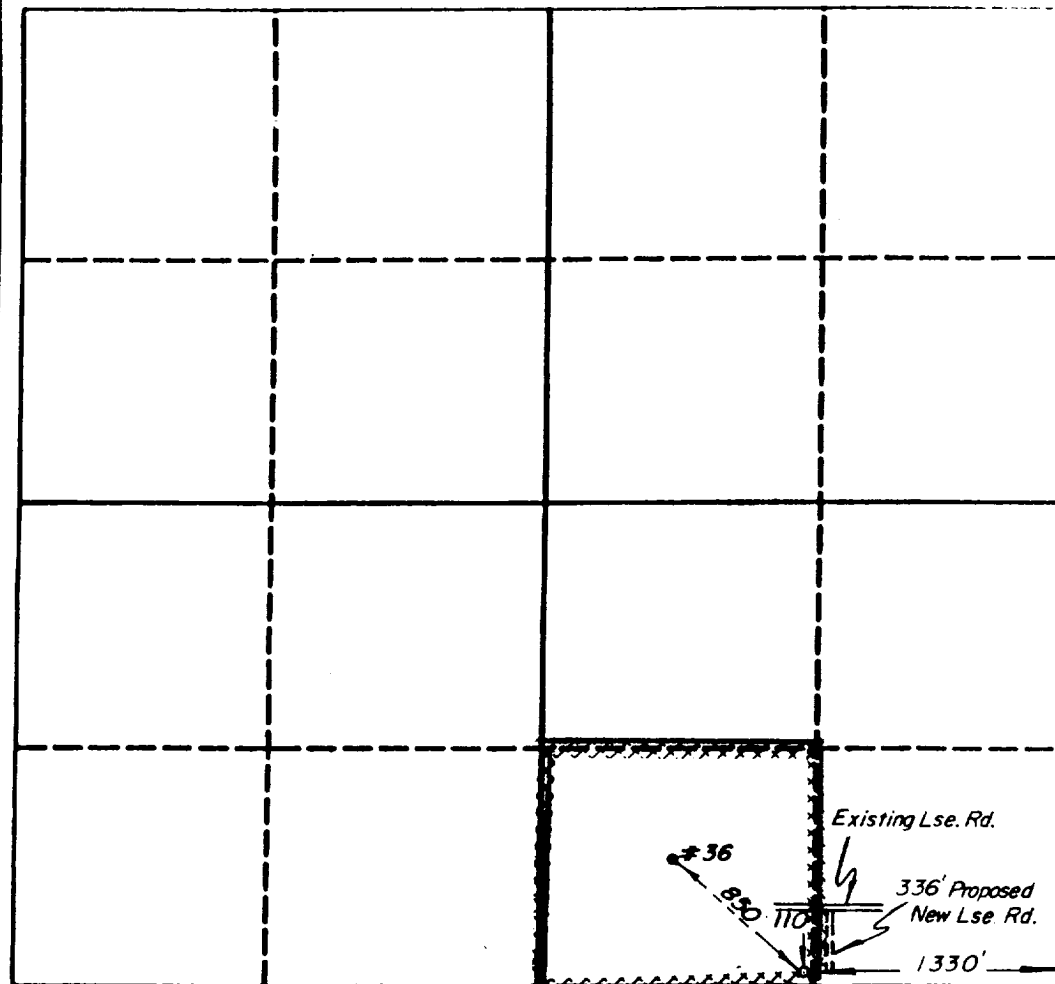
2. If more than one lease is dedicated to the well, outline each and identify the ownership thereof (both as to working interest and royalty).

3. If more than one lease of different ownership is dedicated to the well, have the interest of all owners been consolidated by communitization, unitization, force-pooling, etc.?

☐ Yes ☐ No If answer is "yes" type of consolidation

If answer is "no" list the owners and trust descriptions which have actually been consolidated. (Use reverse side of this form if necessary.)

No allowable will be assigned to the well until all interests have been consolidated (by communitization, unitization, force-pooling, or otherwise) or until a non-standard well, eliminating each interest, has been approved by the Division.



OPERATOR CERTIFICATION

I hereby certify that the information contained herein is true and complete to the best of my knowledge and belief.

Signature  
*R. D. Mariott*

Printed Name  
R. D. MARIOTT

Position  
DIVISION SURVEYOR

Company  
TEXACO EXPLORATION & PRODUCTION INC.

Date  
May 19, 1993

SURVEYOR CERTIFICATION

I hereby certify that the well location shown on this plat was plotted from field notes of actual surveys made by me or under my supervision, and that the same is true and correct to the best of my knowledge and belief.

Date Surveyed  
May 19, 1993

Signature & Seal of Professional Surveyor  
*[Signature]*

Certificate No.  
4882

1  
5 JUN 93 1993

OCD HOBBS OFFICE



Texaco Exploration and Production Inc  
Midland Production Division

500 N Loraine  
Midland TX 79701

P O Box 3109  
Midland TX 79702

May 26, 1993

GOV - STATE AND LOCAL GOVERNMENTS

Unorthodox Locations

West Dollarhide Drinkard Unit

Well Nos. 132, 133, 134, 135, 136, & 138

Lea County, New Mexico

State of New Mexico

Energy and Minerals Department

Oil Conservation Division

P. O. Box 2088

Santa Fe, New Mexico 87501-2088

Attention: Mr. Michael E. Stogner

Gentlemen:

An exception, by administrative approval, to Rule 104 F.I. is requested for Texaco Exploration and Production Inc.'s West Dollarhide Drinkard Unit Well Nos. 132, 133, 134, 135, 136, and 138. The wells are located as follows:

Well No. 132:	115'	FNL & 100'	FWL,	Sec.33,	T-24-S,	R-38-E
Well No. 133:	110'	FSL & 1330'	FEL,	Sec.29,	T-24-S,	R-38-E
Well No. 134:	1700'	FNL & 1300'	FEL,	Sec.30,	T-24-S,	R-38-E
Well No. 135:	1450'	FNL & 2400'	FEL,	Sec.30,	T-24-S,	R-38-E
Well No. 136:	200'	FNL & 2350'	FEL,	Sec.30,	T-24-S,	R-38-E
Well No. 138:	2630'	FNL & 1450'	FWL,	Sec.19,	T-24-S,	R-38-E

The wells must be drilled in these locations to ensure proper development on 10-acre spacing. Wells drilled previously on 10-acre spacing have proven to be viable wells. These wells will be completed in the Drinkard formation.

It should be noted that there are no affected offset operators to Well Nos. 132, 133, 134, 135, 136, or 138. Well Nos. 134, 135, and 136 are on Federal Minerals.

Attached are Forms C-102 for each well and a lease plat showing the existing wells, and locations of the subject wells.

Yours very truly,

*C. P. Basham / cwh*

C. P. Basham  
Drilling Operations Manager

CWH:cwh

cc: NMOCD, P. O. Box 1980, Hobbs, NM 88240

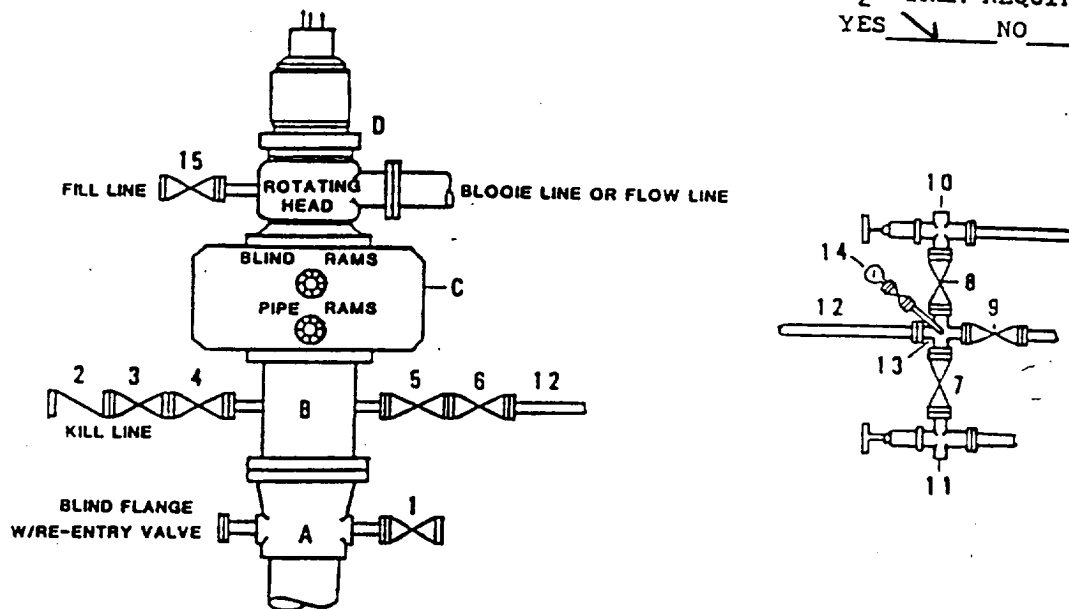
cc: BLM, P. O. Box 1778, Carlsbad, NM 88220

10 0 2 1993

000 HONORS OFFICE

**DRILLING CONTROL  
CONDITION II-B 3000 WP  
FOR AIR DRILLING OR  
WHERE NITROGEN OR AIR BLOWS ARE EXPECTED**

H<sub>2</sub>S TRIM REQUIRED  
YES ☒ NO ☐



**DRILLING CONTROL  
MATERIAL LIST - CONDITION II - B**

- |                |   |
|----------------|---|
| A              | Texaco Wellhead   |
| B              | 3000# W.P. drilling spool with a 2" minimum flanged outlet for kill line and 3" minimum flanged outlet for choke line.  |
| C              | 3000# W.P. Dual ram type preventer, hydraulic operated with 1" steel, 3000# W.P. control lines (where sub-structure height is adequate, 2 - 3000# W.P. single ram type preventers may be utilized). |
| D              | Rotating Head with fill up outlet and extended Bloeie Line.   |
| 1,3,4,<br>7,8, | 2" minimum 3000# W.P. flanged full opening steel gate valve, or Halliburton Lo Torc Plug valve.   |
| 2              | 2" minimum 3000# W.P. back pressure valve.  |
| 5,6,9          | 3" minimum 3000# W.P. flanged full opening steel gate valve, or Halliburton Lo Torc Plug valve.   |
| 12             | 3" minimum schedule 80, Grade "B", seamless line pipe.  |
| 13             | 2" minimum x 3" minimum 3000# W.P. flanged cross.   |
| 10,11          | 2" minimum 3000# W.P. adjustable choke bodies.  |
| 14             | Cameron Mud Gauge or equivalent ( location optional in choke line).   |
| 15             | 2" minimum 3000# W.P. flanged or threaded full opening steel gate valve, or Halliburton Lo Torc Plug valve.   |



TEXACO, INC.  
MIDLAND DIVISION  
MIDLAND, TEXAS



SCALE	DATE	EST. NO.	DRG. NO.
DRAWN BY			
CHECKED BY			
APPROVED BY			

EXHIBIT C