

(November 1982)
(formerly 9-6310)

OIL CONS. COMMISSION UNITED STATES

P. O. BOX 19 DEPARTMENT OF THE INTERIOR

HOBBS, NEW MEXICO 88240
BUREAU OF LAND MANAGEMENT

SUBMIT IN TWO COPIES

(Other instructions on
reverse side)20-075-37050
Form approved.

Budget Bureau No. 1004-0136

Expires August 31, 1985

APPLICATION FOR PERMIT TO DRILL, DEEPEN, OR PLUG BACK

1a. TYPE OF WORK

DRILL ☒DEEPEN ☐PLUG BACK ☐

b. TYPE OF WELL

OIL

WELL ☒

GAS

WELL ☒OTHER ☐

SINGLE

ZONE ☒

MULTIPLE

ZONE ☐

2. NAME OF OPERATOR

Enron Oil & Gas Company

3. ADDRESS OF OPERATOR

P. O. Box 2267, Midland, Texas 79702

4. LOCATION OF WELL (Report location clearly and in accordance with any State requirements.)*

At surface

660' FSL & 1980' FWL

At proposed prod. zone

660' FSL & 1980' FWL

14. DISTANCE IN MILES AND DIRECTION FROM NEAREST TOWN OR POST OFFICE*

29 miles west from Jal, NM

15. DISTANCE FROM PROPOSED*

LOCATION TO NEAREST

PROPERTY OR LEASE LINE, FT.

(Also to nearest drilg. unit line, if any)

660

660

16. NO. OF ACRES IN LEASE

1399.89

18. DISTANCE FROM PROPOSED LOCATION*

TO NEAREST WELL, DRILLING, COMPLETED,

OR APPLIED FOR, ON THIS LEASE, FT.

None

19. PROPOSED DEPTH

13,900'

21. ELEVATIONS (Show whether DF, RT, GR, etc.)

3367.8' GR

23.

PROPOSED CASING AND CEMENTING PROGRAM

SIZE OF HOLE	SIZE OF CASING	WEIGHT PER FOOT	SETTING DEPTH	QUANTITY OF CEMENT
14-3/4	11-3/4	42# H-40 A ST&C	650'	250 sacks C1 C CIRCULATED
11	8-5/8	24& 32# J-55 S & C	5200'	800 sacks Prem Plus
7-7/8	5-1/2	17# J-55 & N-80 ST&C	13400'	& 300 sx C1 C CIRCULATED
4-3/4	2-7/8 Prod Csg	6.5# N-80 EUE	13900'	1200 sacks 50/50 C1 H TOC: 7500'
				75 sx 50/50 C1 H Poz TOC: 13000'

Acreage is dedicated.

Approved Subject to
General Requirements and
Special Stipulations
Attached

IN ABOVE SPACE DESCRIBE PROPOSED PROGRAM: If proposal is to deepen or plug back, give data on present productive zone and proposed new productive zone. If proposal is to drill or deepen directionally, give pertinent data on subsurface locations and measured and true vertical depths. Give blowout preventer program, if any.

24.

SIGNED

Betty Gildon

Betty Gildon

TITLE

Regulatory Analyst

DATE

4/27/93

(This space for Federal or State office use)

PERMIT NO.

APPROVAL DATE

(ORIG. SGD.) RICHARD L. MANUS

TITLE

AREA MANAGER

DATE

JUN 22 1993

CONDITIONS OF APPROVAL, IF ANY:

*See Instructions On Reverse Side

Title 18 U.S.C. Section 1001, makes it a crime for any person knowingly and willfully to make to any department or agency of the United States any false, fictitious or fraudulent statements or representations as to any matter within its jurisdiction.

ALL INFORMATION CONTAINED
HEREIN IS UNCLASSIFIED
DATE 08-14-01 BY 60322
UCBAW/STP/STP

RECEIVED

JUN 23 1993

JOHN HOBBS
OFFICE

OIL CONSERVATION DIVISION

P.O. Box 2088

Santa Fe, New Mexico 87504-2088

DISTRICT I

P.O. Box 1980, Hobbs, NM 88240

DISTRICT II

P.O. Drawer DD, Artesia, NM 88210

DISTRICT III

1000 Rio Brazos Rd., Aztec, NM 87410

WELL LOCATION AND ACREAGE DEDICATION PLAT

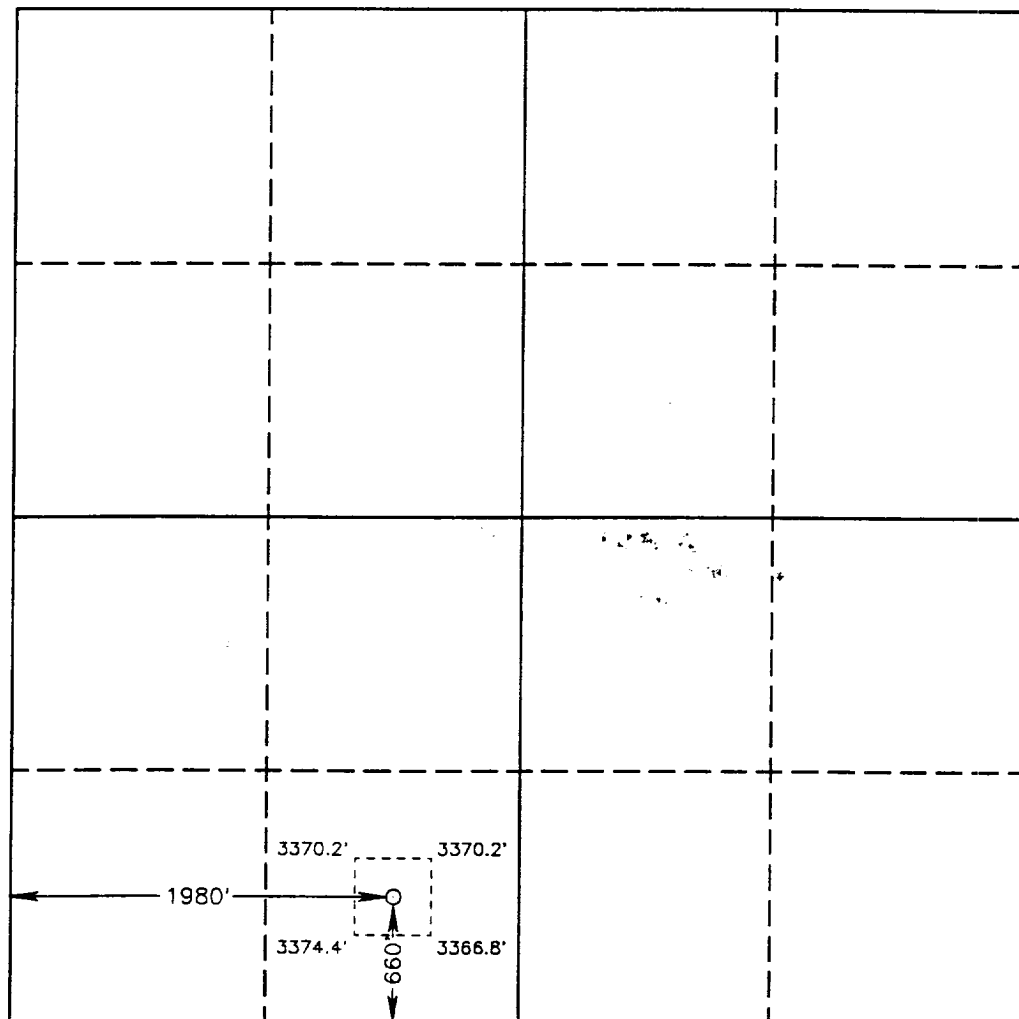
All Distances must be from the outer boundaries of the section

Operator ENRON OIL AND GAS COMPANY			Lease HALLWOOD "12" FEDERAL		Well No. 1
Unit Letter N	Section 12	Township 25 SOUTH	Range 33 EAST	NMPM	County LEA
Actual Footage Location of Well: 660 feet from the SOUTH line and 1980 feet from the WEST line					
Ground Level Elev. 3367.8'	Producing Formation Bone Spring		Pool Red Hills		Dedicated Acreage: 40 Acres

- Outline the acreage dedicated to the subject well by colored pencil or hatchure marks on the plat below.
- If more than one lease is dedicated to the well, outline each and identify the ownership thereof (both as to working interest and royalty).
- If more than one lease of different ownership is dedicated to the well, have the interest of all owners been consolidated by communitization, unitization, force-pooling, etc.?
☐ Yes ☐ No If answer is "yes" type of consolidation _____

If answer is "no" list of owners and tract descriptions which have actually been consolidated. (Use reverse side of this form necessary.)

No allowable will be assigned to the well unit all interests have been consolidated (by communitization, unitization, forced-pooling, otherwise) or until a non-standard unit, eliminating such interest, has been approved by the Division.



OPERATOR CERTIFICATION

I hereby certify the the information contained herein is true and complete to the best of my knowledge and belief.

Signature

Printed Name

Betty Gildon

Position

Regulatory Analyst

Company

Enron Oil & Gas Company

Date

4-27-93

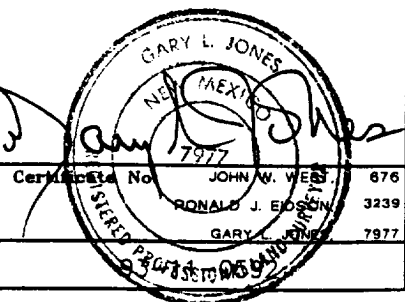
SURVEYOR CERTIFICATION

I hereby certify that the well location shown on this plat was plotted from field notes of actual surveys made by me or under my supervision, and that the same is true and correct to the best of my knowledge and belief.

Date Surveyed

APRIL 7, 1993

Signature & Seal of
Professional Surveyor



Certificate No.	JOHN W. WESS	876
	RONALD J. EIDSON	3239
	GARY L. JONES	7977

See revised Plat

RECEIVED

JUN 23 1993

MR HOBBS
OFFICE

OIL CONSERVATION DIVISION

DISTRICT I
P.O. Box 1980, Hobbs, NM 88240

P.O. Box 2088

Santa Fe, New Mexico 87504-2088

DISTRICT II
P.O. Drawer DD, Artesia, NM 88210

DISTRICT III
1000 Rio Brazos Rd., Aztec, NM 87410

WELL LOCATION AND ACREAGE DEDICATION PLAT

All Distances must be from the outer boundaries of the section

Operator ENRON OIL AND GAS COMPANY			Lease HALLWOOD "12" FEDERAL		Well No. 1
Unit Letter N	Section 12	Township 25 SOUTH	Range 33 EAST	NMPM	County LEA

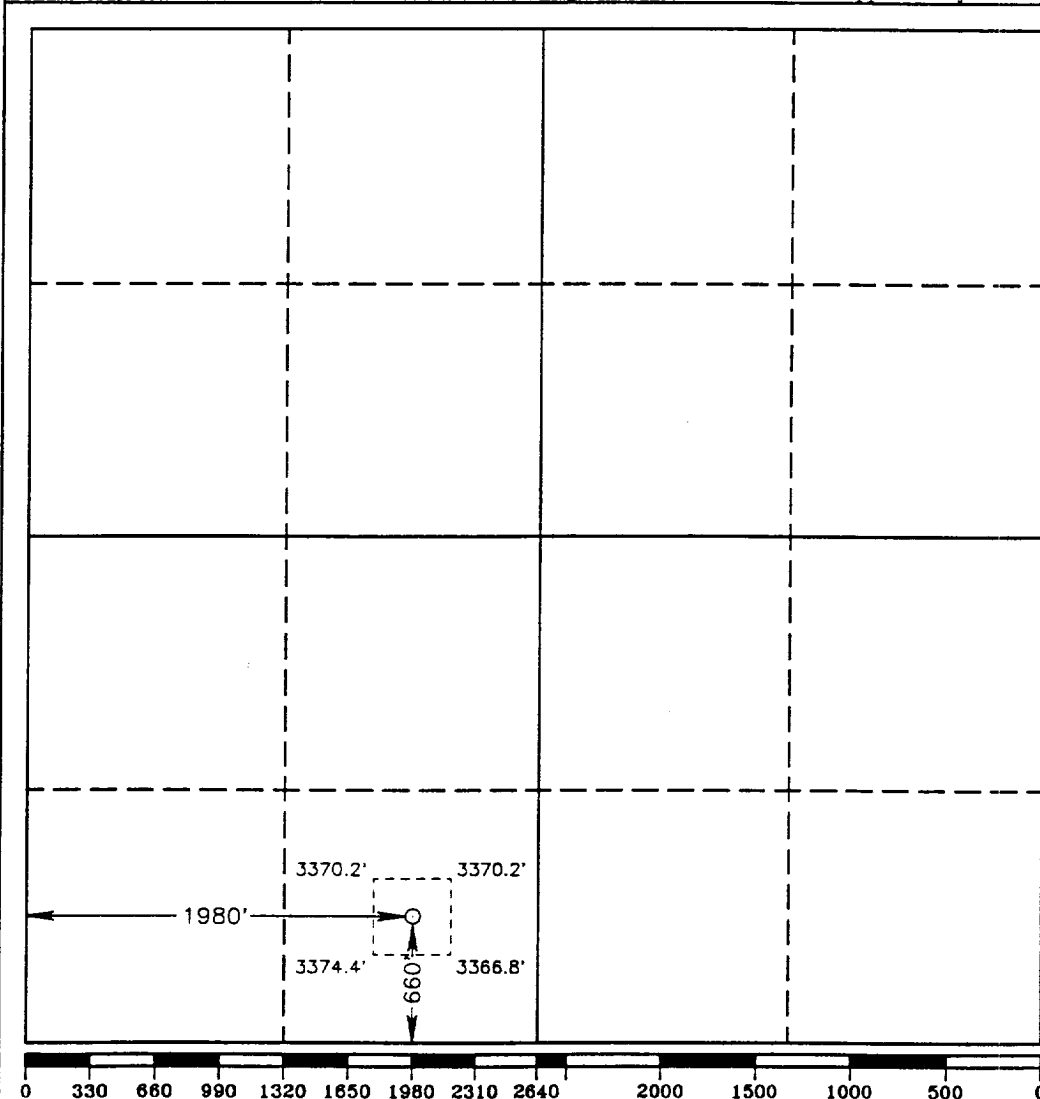
Actual Footage Location of Well:

660 feet from the SOUTH line and		1980 feet from the WEST line	
Ground Level Elev. 3367.8'	Producing Formation Wolfcamp	Pool Red Hills Vaca Draw	Dedicated Acreage: S/2 320 Acres

1. Outline the acreage dedicated to the subject well by colored pencil or hachure marks on the plat below.
2. If more than one lease is dedicated to the well, outline each and identify the ownership thereof (both as to working interest and royalty).
3. If more than one lease of different ownership is dedicated to the well, have the interest of all owners been consolidated by communitization, unitization, force-pooling, etc?
☐ Yes ☐ No If answer is "yes" type of consolidation _____

If answer is "no" list of owners and tract descriptions which have actually been consolidated. (Use reverse side of this form necessary.)

No allowable will be assigned to the well unit all interests have been consolidated (by communitization, unitization, forced-pooling, otherwise) or until a non-standard unit, eliminating such interest, has been approved by the Division.



OPERATOR CERTIFICATION

I hereby certify the the information contained herein is true and complete to the best of my knowledge and belief.

Signature
Betty Gildon
Printed Name
Betty Gildon
Position
Regulatory Analyst
Company
4-27-93
Date
Enron Oil & Gas Company

SURVEYOR CERTIFICATION

I hereby certify that the well location shown on this plat was plotted from field notes of actual surveys made by me or under my supervision, and that the same is true and correct to the best of my knowledge and belief.

Date Surveyed
APRIL 7, 1993

Signature & Seal of
Professional Surveyor

Gary L. Jones
GARY L. JONES
CERTIFICATE NO. JOHN W. WEST 676
RONALD J. EIDSON 3239
GARY L. JONES 7977
93-245100392

RECEIVED

JUN 23 1993

WILLIAM HOBBS
OFFICE

DRILLING PROGRAM

Enron Oil & Gas Company
Hallwood "12" Federal, Well No. 1
660' FSL & 1980' FWL
Sec. 12, T25S, R33E
Lea County, New Mexico

1. Geologic Name of Surface Formation:

Permian

2. Estimated Tops of Important Geologic Markers:

Rustler	850'
Delaware Mt. Group	5175'
Bone Spring Lime	9275'
Bone Spring Pay	12230'
Wolfcamp Marker	12465'
Wolfcamp Pay	13800'
TD	13900'

3. Estimated Depths of Anticipated Fresh Water, Oil or Gas:

Upper Permian Sands	100'	Fresh Water
Bone Spring	12230'	Oil
Wolfcamp	13800'	Gas

No other formations are expected to give up oil, gas or fresh water in measurable quantities. The surface fresh water sands will be protected by setting 11-3/4" casing at 650' and circulating cement back to surface, and 8-5/8" casing will be set at 5200' with cement circulating back to surface.

RECEIVED

JUN 28 1993

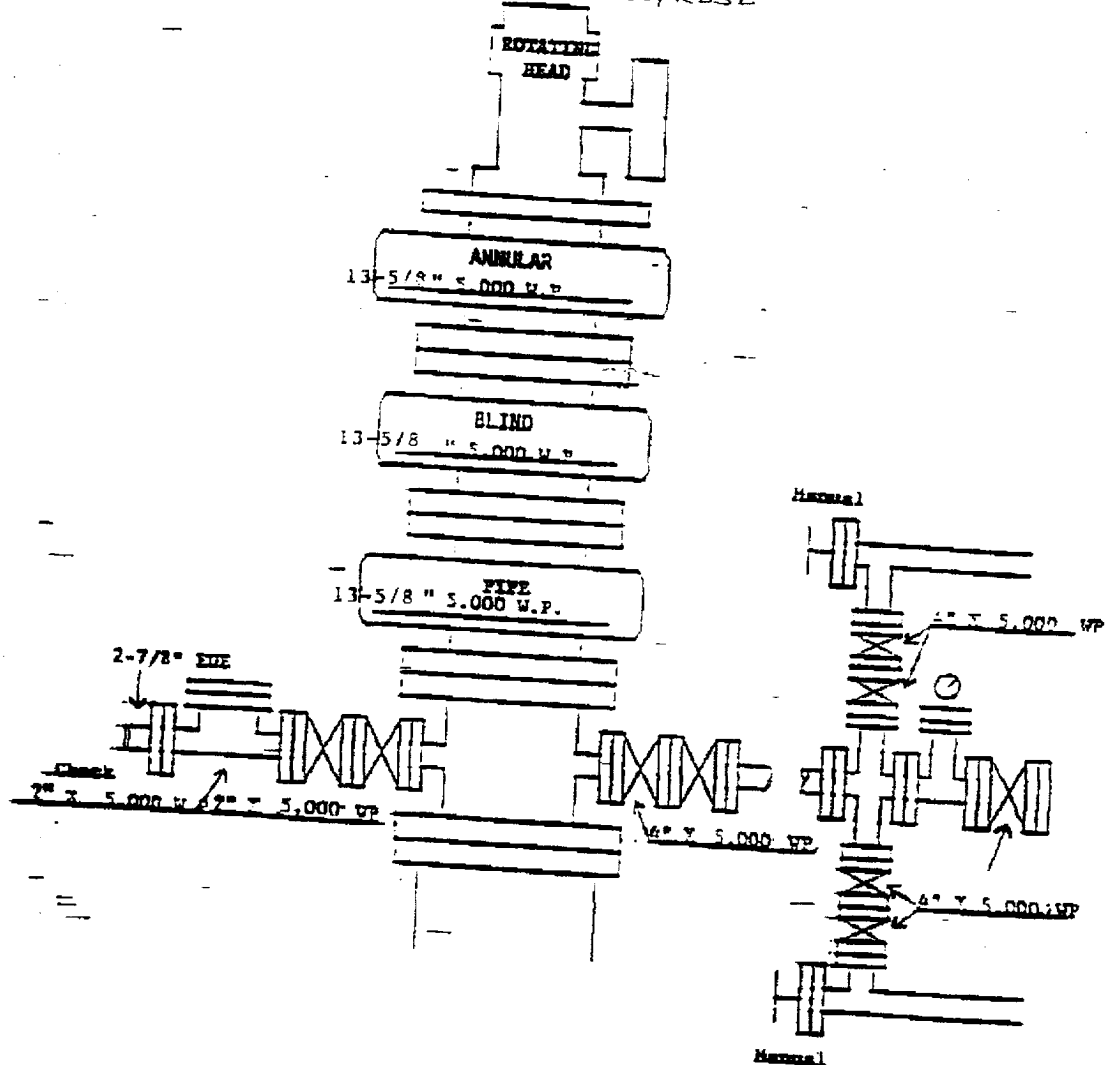
CLERK
OFFICE

NM 30400

BRIDGE OIL & GAS COMPANY

Hollywood 12 Federal #1

Sec. 12, T25S, R33E



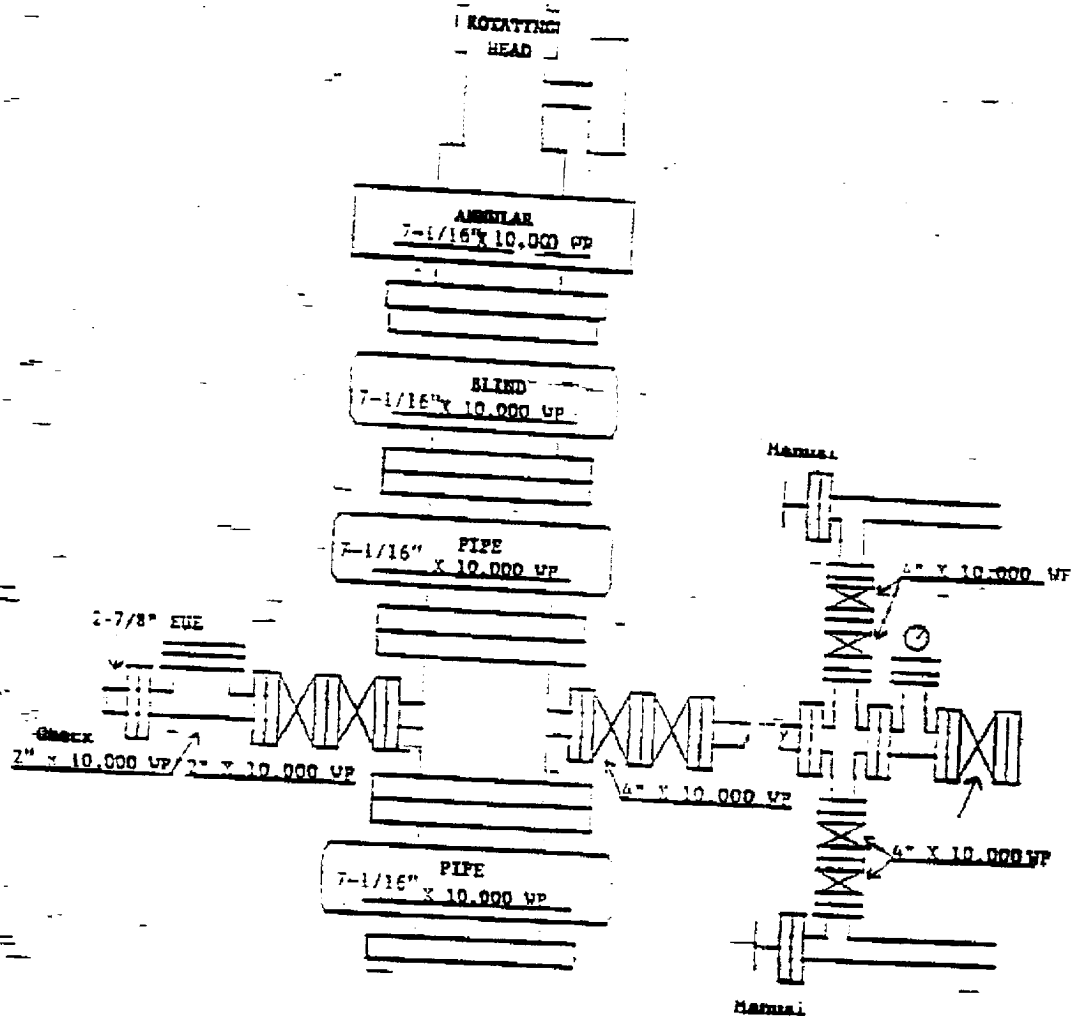
Rig up this equipment at 5,200' use until 13,400' with 5,000# Hydraulic Drilling Choke.
 If 13-5/8" 10,000# equipment is available it should be installed at 5,200' and omit
 13-5/8" 5,000# and 7-1/16" 10,000#.

NM 30400

ENRON OIL & GAS COMPANY

Hollywood 12 Federal #1

Sec. 12, T25S, R33E



Rig up this equipment at 13,400' use until TD at 15,450' with 10,000# drilling choke.

RECEIVED

JUN 28 1993

JOHNS
OFFICE