

TITLE 18 U.S.C. SECTION 1001, makes it a crime for any person knowingly and willfully to make to any department or agency of the United States any false, fictitious or fraudulent statements or representations as to any matter within its jurisdiction.

RECEIVED

JUL 06 1993

DOVER COUNTY
CLERK

ppro: vint
ca
- 4 copies
3 copies

State of New Mexico
Energy, Minerals and Natural Resources Department

Form C-102
Revised 1-1-89

OIL CONSERVATION DIVISION

P.O. Box 2088

Santa Fe, New Mexico 87504-2088

80, Hobbs, NM 88240

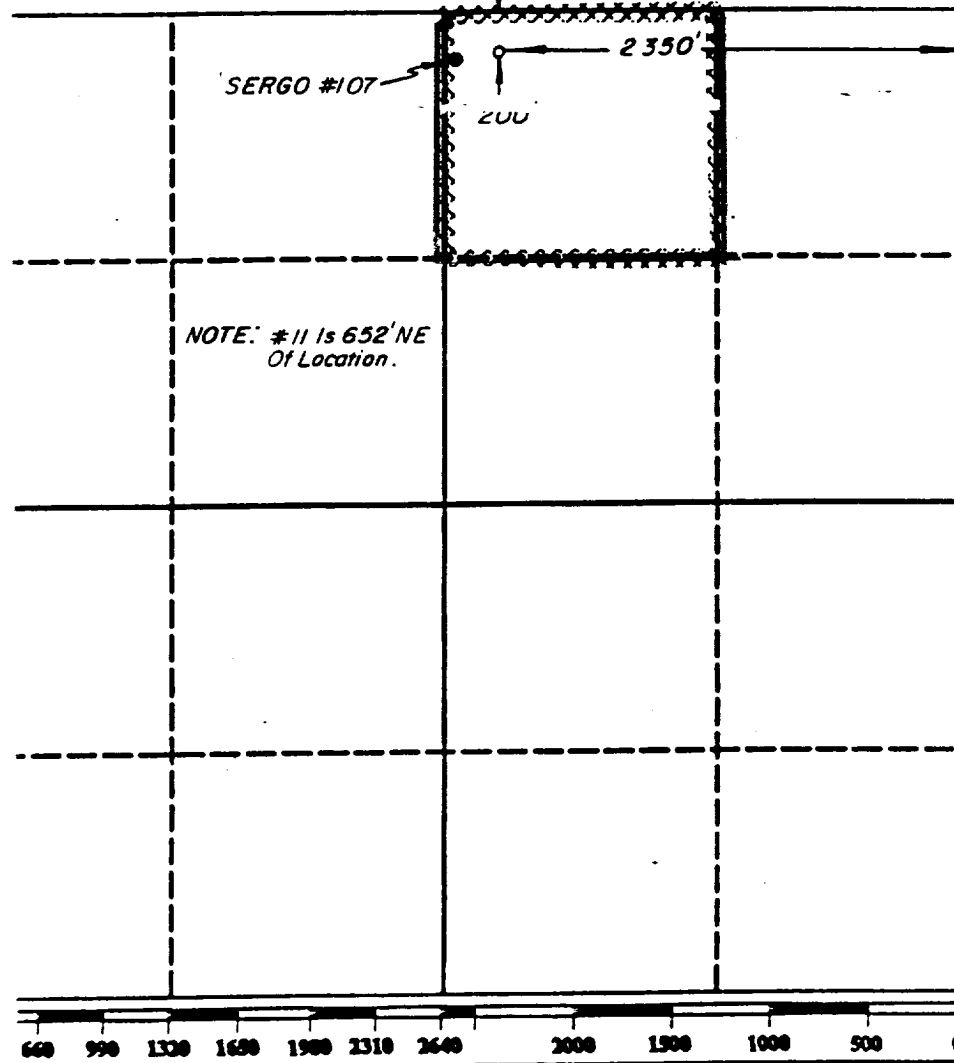
DD, Artesia, NM 88210

II
2205 R.L., Aztec, NM 87410

WELL LOCATION AND ACREAGE DEDICATION PLAT

All Distances must be from the outer boundaries of the section.

O EXPLORATION & PRODUCTION INC.		WEST DOLLARHIDE DRINKARD UNIT		Well No. 136
Section 30	Township 24 SOUTH	Range 38 EAST	County LEA	
Location of Well: 00 200 feet from the NORTH line 2350 feet from the EAST line				
Elev. 154'	Producing Formation TUBB DRINKARD	Pool (ABO & DRINKARD) DOLLARHIDE TUBB-DRINKARD	Dedicated Acreage 40	Acres
Outline the acreage dedicated to the subject well by colored pencil or ink marks on the plat below.				
If more than one lease is dedicated to the well, outline each and identify the ownership thereof (both as to working interest and royalty).				
If more than one lease of different ownership is dedicated to the well, have the interest of all owners been consolidated by communitization, unitization, force-pooling, etc.? <input type="checkbox"/> Yes <input type="checkbox"/> No If answer is "yes" type of consolidation _____ answer is "no" list the owners and tract descriptions which have actually been consolidated. (Use reverse side of is form if necessary.) o allowable will be assigned to the well until all interests have been consolidated (by communitization, unitization, force-pooling, or otherwise) until a non-standard unit, eliminating such interest, has been approved by the Division.				



OPERATOR CERTIFICATION

I hereby certify that the information contained herein is true and complete to the best of my knowledge and belief.

Signature

R. D. Mariott

Printed Name

R. D. MARIOTT

Position

DIVISION SURVEYOR

Company TEXACO EXPLORATION & PRODUCTION INC.

Date

May 19, 1993

SURVEYOR CERTIFICATION

I hereby certify that the well location shown on this plat was plotted from field notes of actual surveys made by me or under my supervision, and that the same is true and correct to the best of my knowledge and belief.

Date Surveyed

May 19, 1993

Signature & Seal of Professional Surveyor

R. D. Mariott

Certificate No.

4882

NSL-3255

RECEIVED

JUL 26 1993

LIBRARY
JUL 26 1993

DRILLING PROGRAM

WEST DOLLARHIDE DRINKARD UNIT No. 136

SURFACE DESCRIPTION:

The land surface in the area of the well site is practically level. Drainage is to the southeast. The top soil is sand. Vegetation consists mainly of shinnery oak, weeds, and range grasses.

FORMATION TOPS: Estimated KB Elevation: 3164'

<u>Formation</u>	<u>Depth</u>	<u>Lithology</u>	<u>Fluid Content</u>
Rustler	1230'	Anhy	----
Yates	2750'	Anhy, Dolo	----
Queen	3700'	Sandstone	Oil/Gas/Wtr
Glorieta	5270'	Sandstone, Dolo	----
Tubb	6180'	Sandstone, Dolo	Oil/Gas/Wtr
Drinkard	6600'	Limestone, Dolo	Oil/Gas/Wtr
Abo	6770'	Limestone, Dolo	Oil/Gas/Wtr

The base of the salt section is at 2600'. No abnormal pressures or temperatures are anticipated to be encountered in this well. H₂S is present in the Queen and Drinkard. H₂S RADIUS OF EXPOSURE: 100ppm = 24', 500ppm = 11', based on 1,000ppm H₂S and 100 MCF (see attached H₂S Drilling Operations Plan. H₂S equipment to be operational prior to drilling out Surface Casing Shoe.)

PRESSURE CONTROL EQUIPMENT:

A 3000 psi Dual Ram type preventer with rotating head will be used. (See Exhibit C). It will be installed after surface casing is set. BOP will be tested each time it is installed on a casing string and at least every 29 days, and operated at least once each 24-hour period during drilling.

CASING AND CEMENT PROGRAM:

The casing and cementing programs are detailed on Form 3160-3. All casing will be new. Intermediate casing will not be set if no water flow is encountered and production cement will be adjusted.

Centralizer Program:

Surface Casing - Centralize the bottom 3 joints and every 4th to surface.

Intermediate Casing - Centralize the bottom 3 jts and every other jt from 4200' to 3600'

Production Casing - Centralize every other joint on bottom 1500'.

RECEIVED

JUL 06 1993

DOH HOSPITAL
JUL 06 1993

West Dollarhide Drinkard Unit No. 136

MUD PROGRAM:

<u>Depth</u>	<u>Type</u>	<u>Weight</u>	<u>Viscosity</u>
0'-1230'	Fresh Water	8.4	28
1230'-4200'	Brine	10.0	29
4200'-7640'	Brine	10.0	29

LOGGING, TESTING:

GR-CNL-LDT, GR-DLL-MSFL, and GR-BHC-Sonic surveys will be run.

No Mud Logging Unit will be used.

No drill stem tests will be conducted.

No cores will be taken.

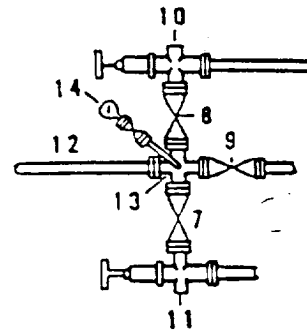
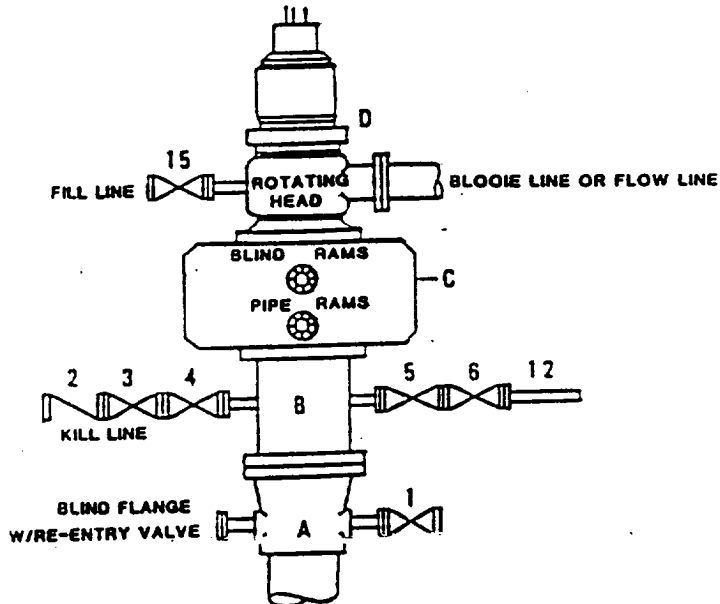
RECEIVED

JUL 06 1993

OCU HOBBS
JUL 06

**DRILLING CONTROL
CONDITION II-B 3000 WP
FOR AIR DRILLING OR
WHERE NITROGEN OR AIR BLOWS ARE EXPECTED**

H₂S TRIM REQUIRED
YES ☒ NO ☐



DRILLING CONTROL

MATERIAL LIST - CONDITION II - B

- | | |
|----------------|---|
| A | Texaco Wellhead |
| B | 3000# W.P. drilling spool with a 2" minimum flanged outlet for kill line and 3" minimum flanged outlet for choke line. |
| C | 3000# W.P. Dual ram type preventer, hydraulic operated with 1" steel, 3000# W.P. control lines (where sub-structure height is adequate, 2 - 3000# W.P. single ram type preventers may be utilized). |
| D | Rotating Head with fill up outlet and extended Blooie Line. |
| 1,3,4,
7,8, | 2" minimum 3000# W.P. flanged full opening steel gate valve, or Halliburton Lo Torc Plug valve. |
| 2 | 2" minimum 3000# W.P. back pressure valve. |
| 5,6,9 | 3" minimum 3000# W.P. flanged full opening steel gate valve, or Halliburton Lo Torc Plug valve. |
| 12 | 3" minimum schedule 80, Grade "B", seamless line pipe. |
| 13 | 2" minimum x 3" minimum 3000# W.P. flanged cross. |
| 10,11 | 2" minimum 3000# W.P. adjustable choke bodies. |
| 14 | Cameron Mud Gauge or equivalent (location optional in choke line). |
| 15 | 2" minimum 3000# W.P. flanged or threaded full opening steel gate valve, or Halliburton Lo Torc Plug valve. |



TEXACO, INC.
MIDLAND DIVISION
MIDLAND, TEXAS



SCALE	DATE	EST. NO.	DRG. NO.
DRAWN BY			
CHECKED BY			
APPROVED BY			

EXHIBIT C

27-1000
11
11

RECEIVED

JUL 06 1993

OOD HOBBS
OFFICE