

OIL CONSERVATION DIVISION

DISTRICT I
P.O. Box 1980, Hobbs, NM 88240

P.O. Box 2088
Santa Fe, New Mexico 87504-2088

DISTRICT II
P.O. Drawer DD, Artesia, NM 88210

DISTRICT III
1000 Rio Brazos Rd., Aztec, NM 87410

WELL LOCATION AND ACREAGE DEDICATION PLAT

All Distances must be from the outer boundaries of the section

Operator ENRON OIL AND GAS CO.		Lease HALLWOOD "12" FEDERAL		Well No. 2
Unit Letter O	Section 12	Township 25 SOUTH	Range 33 EAST NMPM	County LEA

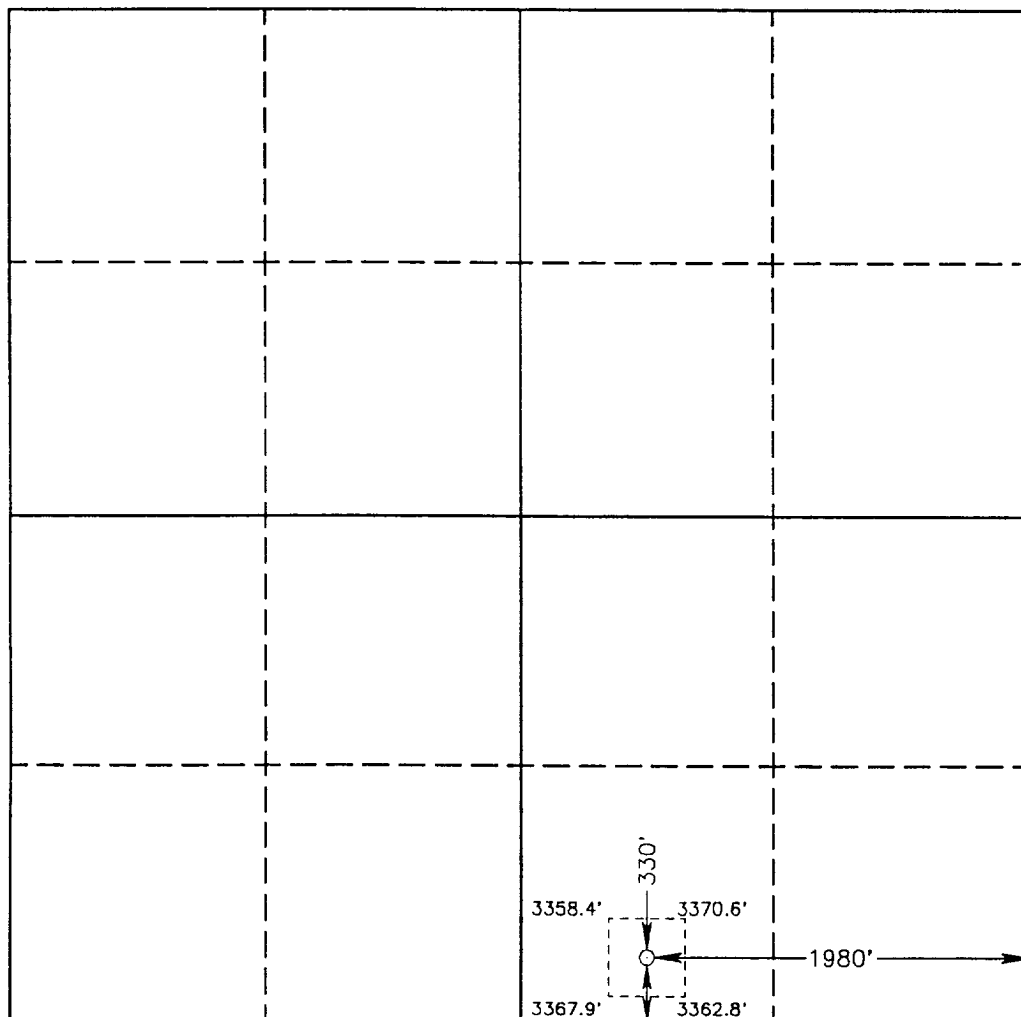
Actual Footage Location of Well:

330 feet from the SOUTH line and		1980 feet from the EAST line	
Ground Level Elev. 3367.1'	Producing Formation Bone Spring	Pool Red Hills	Dedicated Acreage: 80 Acres

- Outline the acreage dedicated to the subject well by colored pencil or hachure marks on the plat below.
- If more than one lease is dedicated to the well, outline each and identify the ownership thereof (both as to working interest and royalty).
- If more than one lease of different ownership is dedicated to the well, have the interest of all owners been consolidated by communitization, unitization, force-pooling, etc.?
☐ Yes ☐ No If answer is "yes" type of consolidation _____

If answer is "no" list of owners and tract descriptions which have actually been consolidated. (Use reverse side of this form necessary.)

No allowable will be assigned to the well unit all interests have been consolidated (by communitization, unitization, forced-pooling, otherwise) or until a non-standard unit, eliminating such interest, has been approved by the Division.



OPERATOR CERTIFICATION

I hereby certify the the information contained herein is true and complete to the best of my knowledge and belief.

Signature
Betty Gildon
Printed Name
Betty Gildon
Position
Regulatory Analyst
Company
Enron Oil & Gas Company
Date
5/2/94

SURVEYOR CERTIFICATION

I hereby certify that the well location shown on this plat was plotted from field notes of actual surveys made by me or under my supervision, and that the same is true and correct to the best of my knowledge and belief.

Date Surveyed
MAY 27, 1993

Signature & Seal of
Professional Surveyor

Gary L. Jones
GARY L. JONES
NEW MEXICO
7977
Certification No. 676
JOHN W. WEST
RONALD J. EIDSON
PROF. GARY L. JONES
3239
7977
93-11-0986

RECEIVED

MAY 08 1994

FOR HOBBS
OFFICE