

Subm. to Appropriate  
District Office  
State Lease - 4 copies  
Fee Lease - 3 copies

State of New Mexico  
Energy, Minerals and Natural Resources Department

Form C-102  
Revised 1-1-89

OIL CONSERVATION DIVISION

DISTRICT I  
P.O. Box 1980, Hobbs, NM 88240

P.O. Box 2088  
Santa Fe, New Mexico 87504-2088

DISTRICT II  
P.O. Drawer DD, Artesia, NM 88210

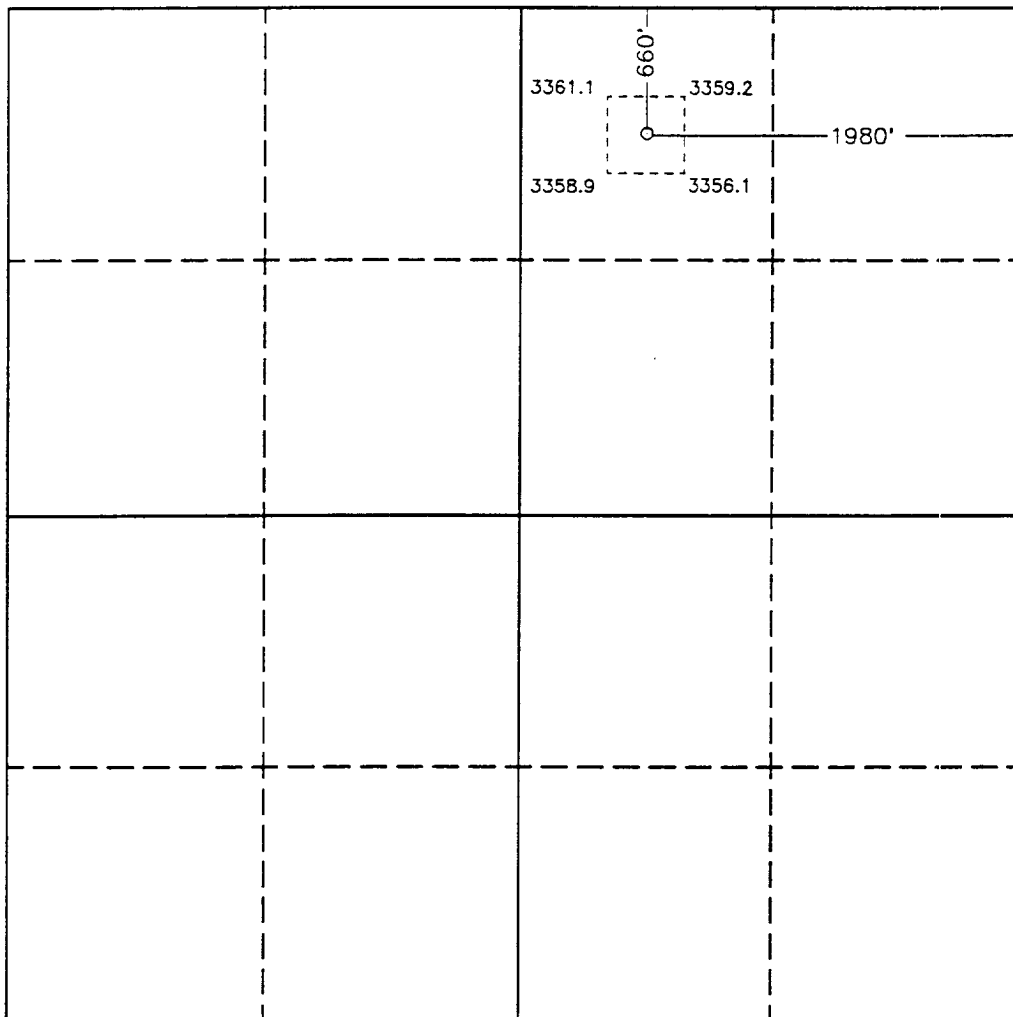
DISTRICT III  
1000 Rio Brazos Rd., Aztec, NM 87410

WELL LOCATION AND ACREAGE DEDICATION PLAT

All Distances must be from the outer boundaries of the section

Operator ENRON OIL AND GAS CO.			Lease VACA "13" FEDERAL		Well No. 2
Unit Letter B	Section 13	Township 25 SOUTH	Range 33 EAST	NMPM	County LEA
Actual Footage Location of Well: 660 feet from the NORTH line and 1980 feet from the EAST line					
Ground Level Elev. 3356.9	Producing Formation Bone Spring	Pool Red Hills	Dedicated Acreage: 80 Acres		

- Outline the acreage dedicated to the subject well by colored pencil or hachure marks on this plat below.
  - If more than one lease is dedicated to the well, outline each and identify the ownership thereof (both as to working interest and royalty).
  - If more than one lease of different ownership is dedicated to the well, have the interest of all owners been consolidated by communitization, unitization, force-pooling, etc.?  
☐ Yes ☐ No If answer is "yes" type of consolidation \_\_\_\_\_
- If answer is "no" list of owners and tract descriptions which have actually been consolidated. (Use reverse side of this form necessary.) \_\_\_\_\_
- No allowable will be assigned to the well unit all interests have been consolidated (by communitization, unitization, forced-pooling, otherwise) or until a non-standard unit, eliminating such interest, has been approved by the Division.



OPERATOR CERTIFICATION

I hereby certify the the information contained herein is true and complete to the best of my knowledge and belief.

Signature  
*Betty Gildon*  
Printed Name  
Betty Gildon  
Position  
Regulatory Analyst  
Company  
Enron Oil & Gas Company  
Date  
5/2/94

SURVEYOR CERTIFICATION

I hereby certify that the well location shown on this plat was plotted from field notes of actual surveys made by me or under my supervision, and that the same is true and correct to the best of my knowledge and belief.

Date Surveyed  
MAY 2, 1993  
Signature & Seal of Professional Surveyor  
*Gary L. Jones*  
Certificate No. JOHN W. WEST, 678  
RONALD J. ELLISON, 8239  
GARY L. JONES, 7977  
95-11-0737

0 330 660 990 1320 1650 1980 2310 2640 2000 1500 1000 500 0

**RECEIVED**

**JUL 11 1994**

**GOODS  
OFFICE**