

UNITED STATES  
DEPARTMENT OF THE INTERIOR  
BUREAU OF LAND MANAGEMENT

APPLICATION FOR PERMIT TO DRILL, DEEPEN, OR PLUG BACK

1a. TYPE OF WORK

DRILL ☒

DEEPEN ☐

PLUG BACK ☐

b. TYPE OF WELL

OIL WELL ☒

GAS WELL ☐

OTHER

SINGLE ZONE ☐

MULTIPLE ZONE ☐

2. NAME OF OPERATOR

Santa Fe Energy Operating Partners, L.P.

3. ADDRESS OF OPERATOR

550 W. Texas, Suite 1330, Midland, Texas 79701

4. LOCATION OF WELL (Report location clearly and in accordance with any State requirements.)\*

At surface

(I), 1980' FSL and 660' FEL, Sec. 6, T-25S, R-33E

At proposed prod. zone

14. DISTANCE IN MILES AND DIRECTION FROM NEAREST TOWN OR POST OFFICE\*

26 miles West of Jal, New Mexico

13. DISTANCE FROM PROPOSED\* LOCATION TO NEAREST PROPERTY OR LEASE LINE, FT.

(Also to nearest drlg. unit line, if any)

660'

16. NO. OF ACRES IN LEASE

1240

17. NO. OF ACRES ASSIGNED TO THIS WELL

40

18. DISTANCE FROM PROPOSED LOCATION\* TO NEAREST WELL, DRILLING, COMPLETED, OR APPLIED FOR, ON THIS LEASE, FT.

N/A

19. PROPOSED DEPTH

9200'

20. ROTARY OR CABLE TOOLS

Rotary

21. ELEVATIONS (Show whether DF, RT, GR, etc.)

3469' GR

22. APPROX. DATE WORK WILL START\*

August 24, 1993

23.

PROPOSED CASING AND CEMENTING PROGRAM

No Water Basin

SIZE OF HOLE	SIZE OF CASING	WEIGHT PER FOOT	SETTING DEPTH	QUANTITY OF CEMENT
17-1/2"	13-3/8"	48.0	600'	600 sx to circulate
12-1/4"	8-5/8"	32.0	4900'	2500 sx to circulate
7-7/8"	5-1/2"	15.5 & 17.0	9200'	To tie back to 4700'

We propose to drill to a depth sufficient to test the Delaware formation for oil. If productive, 5-1/2" casing will be cemented at TD. If non-productive, the well will be plugged and abandoned in a manner consistent with Federal Regulations. Specific programs as per Onshore Oil and Gas Order No. 1 are outlined in the following attachments:

Drilling Program

Exhibit A - Operations Plan

Exhibit B - BOP and Choke

Exhibit C - Drilling Fluid Program

Exhibit D - Auxiliary Equipment

Exhibit E - Topo Map of Location

Exhibit F - Plat Showing Existing Wells

Exhibit G - Well Site Layout

Surface Use and Operations Plan

IN ABOVE SPACE DESCRIBE PROPOSED PROGRAM: If proposal is to deepen or plug back, give data on present productive zone and proposed new productive zone. If proposal is to drill or deepen directionally, give pertinent data on subsurface locations and measured and true vertical depths. Give blowout preventer program, if any.

24.

SIGNED

*Daniel Roberts*

TITLE

Sr. Drilling Engineer

DATE

July 22, 1993

(This space for Federal or State office use)

PERMIT NO.

APPROVAL DATE

APPROVED BY

(ORIG. SGD.) RICHARD L. MANUS

TITLE

AREA MANAGER

DATE

SEP 10 1993

CONDITIONS OF APPROVAL, IF ANY:

Approval Subject to  
General Requirements and  
Special stipulations  
Attached

\*See Instructions On Reverse Side

Title 18 U.S.C. Section 1001, makes it a crime for any person knowingly and willfully to make to any department or agency of the United States any false, fictitious or fraudulent statements or representations as to any matter within its jurisdiction.

RECEIVED

APR 11 1964

LIBRARY

**DISTRICT I**  
P. O. Box 1980  
Hobbs, NM 88240

**DISTRICT II**  
P. O. Drawer DD  
Artesia, NM 88210

**DISTRICT III**  
1000 Rio Brazos Rd  
Aztec, NM 87410

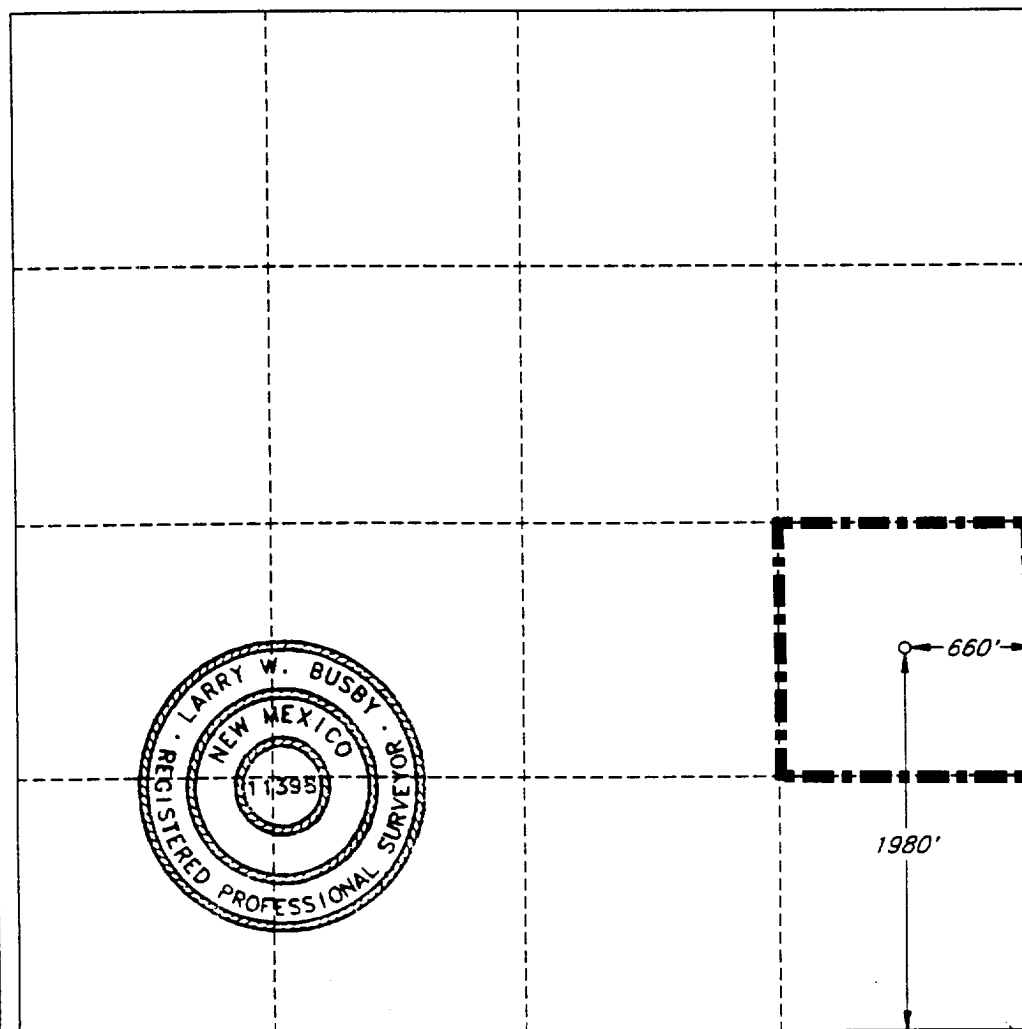
**OIL CONSERVATION DIVISION**  
P. O. Box 2088  
Santa Fe, New Mexico 87504-2088

**WELL LOCATION AND ACREAGE DEDICATION PLAT**

All distances must be from the outer boundaries of the section.

Operator <b>SANTA FE ENERGY OPER. PART. L.P.</b>			Lease <b>COHO '6' FEDERAL</b>		Well No. <b>1</b>
Unit Letter <b>I</b>	Section <b>6</b>	Township <b>25 SOUTH</b>	Range <b>33 EAST, N.M.P.M.</b>	County <b>LEA</b>	
Actual Footage Location of Well <b>1980</b> feet from the <b>SOUTH</b> line and <b>660</b> feet from the <b>EAST</b> line					
Ground Level Elev. <b>3469'</b>	Producing Formation <b>Delaware</b>		Pool <b>Wildcat</b> <b>Undesignated (Delaware)</b>		<b>40</b> Acres

1. Outline the acreage dedicated to the subject well by colored pencil or hachure marks on the plat below.
2. If more than one lease is dedicated to the well, outline each and identify the ownership thereof (both as to working interest and royalty).
3. If more than one lease of different ownership is dedicated to the well, have the interest of all the owners been consolidated by communitization, unitization, forced-pooling, etc.?  
☐ Yes ☐ No If answer is "yes", type of consolidation \_\_\_\_\_  
If the answer is "no", list the owners and tract descriptions which have actually been consolidated. (Use the reverse side of this form if necessary.) \_\_\_\_\_  
No allowable will be assigned to the well until all interests have been consolidated (by communitization, unitization, forced-pooling, or otherwise) or until a non-standard unit, eliminating such interest, has been approved by the division.



**OPERATOR CERTIFICATION**

I hereby certify that the information herein is true and complete to the best of my knowledge and belief.

Signature  
*Darrell Roberts*  
Printed Name  
**Darrell Roberts**  
Position  
**Sr. Drilling Engineer**  
Company  
**Santa Fe Energy Operating Partners, L.P.**  
Date  
**July 22, 1993**

**SURVEYOR CERTIFICATION**

I hereby certify that the well location shown on this plat was plotted from field notes of actual surveys made by me or under my supervision, and that the same is true and correct to the best of my knowledge and belief.

Date Surveyed  
**JULY 12, 1993**  
Signature and Seal of Professional Surveyor  
*Larry W. Busby*  
Certificate No.  
**LARRY W. BUSBY R.P.S. #11398**  
**JOB NO. 97332 V.H.B.**

RECEIVED

SEP 15 1953

GOVERNMENT  
OFFICE