

Submit to Appropriate
District Office
State Lease - 4 copies
Fee Lease - 3 copies

State of New Mexico
Energy, Minerals and Natural Resources Department

Form C-102
Revised 1-1-89

DISTRICT I
P.O. Box 1980, Hobbs, NM 88240

OIL CONSERVATION DIVISION

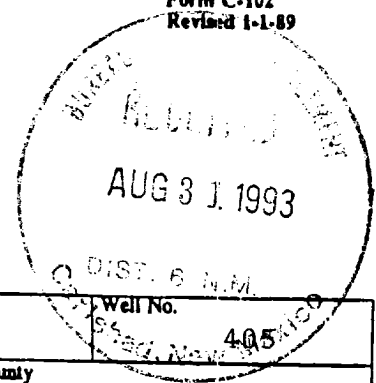
P.O. Box 2088
Santa Fe, New Mexico 87504-2088

DISTRICT II
P.O. Drawer DD, Artesia, NM 88210

DISTRICT III
1000 Rio Brazos Rd., Aztec, NM 87410

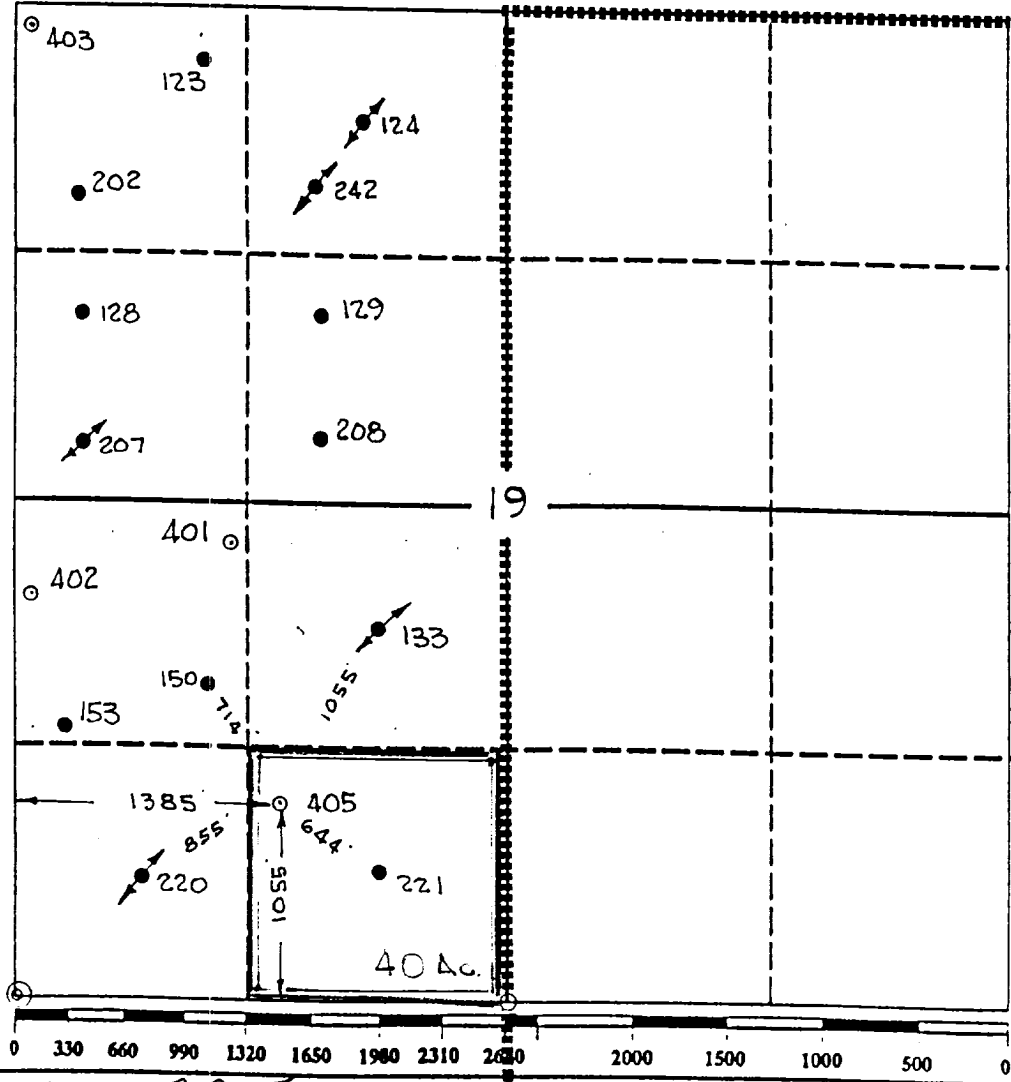
WELL LOCATION AND ACREAGE DEDICATION PLAT

All Distances must be from the outer boundaries of the section



Operator TEXACO EXPLORATION & PRODUCTION		Lease COOPER JAL UNIT	
Unit Letter N	Section 19	Township 24-South	Range 37-East
Actual Footage Location of Well: 1055 feet from the South line and 1385 feet from the West line		County Lea	Well No. 405
Ground level Elev. 3279	Producing Formation 7RVS, Queen	Pool Jalmar; Langlie Mattix	Dedicated Acreage: 40 Acres

1. Outline the acreage dedicated to the subject well by colored pencil or hatchure marks on the plat below.
2. If more than one lease is dedicated to the well, outline each and identify the ownership thereof (both as to working interest and royalty).
3. If more than one lease of different ownership is dedicated to the well, have the interest of all owners been consolidated by communitization, unitization, force-pooling, etc.?
☒ Yes ☐ No If answer is "yes" type of consolidation Unitization
If answer is "no" list the owners and tract descriptions which have actually been consolidated. (Use reverse side of this form if necessary.)
No allowable will be assigned to the well until all interests have been consolidated (by communitization, unitization, forced-pooling, or otherwise) or until a non-standard unit, eliminating such interest, has been approved by the Division.



OPERATOR CERTIFICATION I hereby certify that the information contained herein is true and complete to the best of my knowledge and belief.	
Signature <i>Royce D. Mariott</i>	Printed Name Royce D. Mariott
Position Division Surveyor	
Company Texaco Expl. & Prod.	
Date Aug. 23, 1993	
SURVEYOR CERTIFICATION I hereby certify that the well location shown on this plat was plotted from field notes of actual surveys made by me or under my supervision, and that the same is true and correct to the best of my knowledge and belief.	
Date Surveyed Aug. 17, 1993	
Signature & Seal of Professional Surveyor <i>John S. Piper</i>	
Certificate No. 7254 John S. Piper	
Lea Co. FB. 8, Pg. 79	

NSL-3315