

Submit to Appropriate
District Office
State Lease - 6 copies
Fee Lease - 5 copies

State of New Mexico
Energy, Minerals and Natural Resources Department

Form C-101
Revised 1-1-89

OIL CONSERVATION DIVISION

P.O. Box 2088
Santa Fe, New Mexico 87504-2088

DISTRICT I
P.O. Box 1980, Hobbs, NM 88240

DISTRICT II
P.O. Drawer DD, Artesia, NM 88210

DISTRICT III
1000 Rio Brazos Rd., Aztec, NM 87410

API NO. (assigned by OCD on New Wells)

30-025-32372

5. Indicate Type of Lease

STATE ☒

FEE ☐

6. State Oil & Gas Lease No.

B-9311

APPLICATION FOR PERMIT TO DRILL, DEEPEN, OR PLUG BACK

1a. Type of Work:

DRILL ☒

RE-ENTER ☐

DEEPEN ☐

PLUG BACK ☐

b. Type of Well:

OIL
WELL ☒

GAS
WELL ☐

OTHER

SINGLE
ZONE ☒

MULTIPLE
ZONE ☐

7. Lease Name or Unit Agreement Name

WEST DOLLARHIDE DRINKARD UNIT

<10926>

2. Name of Operator

TEXACO EXPLORATION AND PRODUCTION INC.

<022351>

8. Well No.

144

3. Address of Operator

P. O. Box 3109, Midland, Texas 79702

9. Pool name or Wildcat

DOLLARHIDE TUBB DRINKARD

<18830>

4. Well Location

Unit Letter

J

: 1400

Feet From The SOUTH

Line and 1880

Feet From The EAST

Line

Section 32

Township 24-SOUTH

Range 38-EAST

NMPM LEA

County

10. Proposed Depth

7470'

11. Formation

DRINKARD

12. Rotary or C.T.

ROTARY

13. Elevations (Show whether DF, RT, GR, etc.)

GR-3186'

14. Kind & Status Plug. Bond

BLANKET

15. Drilling Contractor

TO BE SELECTED

16. Approx. Date Work will start

FEBRUARY 1, 1994

17. PROPOSED CASING AND CEMENT PROGRAM

SIZE OF HOLE	SIZE OF CASING	WEIGHT PER FOOT	SETTING DEPTH	SACKS OF CEMENT	EST. TOP
17	13 3/8	48#	40'	REDI-MIX	SURFACE
12 1/4	8 5/8	24#	1175'	600	SURFACE
7 7/8	5 1/2	15.5# & 17#	7470'	2000	SURFACE

CEMENTING PROGRAM: CONDUCTOR - REDIMIX.

SURFACE CASING - 400 SX CLASS C w/ 4% GEL & 2% CaCl₂ (13.5ppg, 1.74cf/s, 9.1gw/s). F/B 200 SX CLASS C w/ 2% CaCl₂ (14.8ppg, 1.32cf/s, 6.3gw/s).

PRODUCTION CASING - 1500 SX 35/65 POZ CLASS H w/ 6% GEL, 5% SALT & 1/4# FLOCELE (12.8ppg, 1.94cf/s, 10.4gw/s). F/B 500 SX CLASS H (15.6ppg, 1.18cf/s, 5.2gw/s).

OXY OPERATES A WELL IN THIS QUARTER QUARTER SECTION AND HAS BEEN FURNISHED A COPY OF THIS APPLICATION.
UNORTHODOX LOCATION GRANTED 12-28-93 UNDER ADMINISTRATIVE ORDER NSL-3338 (COPY ATTACHED).

IN ABOVE SPACE DESCRIBE PROPOSED PROGRAM: IF PROPOSAL IS TO DEEPEN OR PLUG BACK, GIVE DATA ON PRESENT PRODUCTIVE ZONE AND PROPOSED NEW PRODUCTIVE ZONE. GIVE BLOWOUT PREVENTER PROGRAM, IF ANY.

I hereby certify that the information above is true and complete to the best of my knowledge and belief.

SIGNATURE C. P. Basham / cwb TITLE DRILLING OPERATIONS MANAGER DATE 01-04-94

TYPE OR PRINT NAME C. P. BASHAM

TELEPHONE NO. (915) 688-4620

(This space for State Use)

ORIGINAL SIGNED BY JERRY SEXTON
DISTRICT I SUPERVISOR

APPROVED BY _____ TITLE _____ DATE JAN 07 1994

CONDITIONS OF APPROVAL, IF ANY:

Submit to Appropriate
District Office
State Lease - 4 copies
Fee Lease - 3 copies

State of New Mexico
Energy, Minerals and Natural Resources Department

Form C-102
Revised 1-1-89

OIL CONSERVATION DIVISION
P.O. Box 2088
Santa Fe, New Mexico 87504-2088

DISTRICT I
P.O. Box 1900, Hobbs, NM 88240

DISTRICT II
P.O. Drawer DD, Artesia, NM 88210

DISTRICT III
1000 Elm Branch Rd., Aztec, NM 87410

WELL LOCATION AND ACREAGE DEDICATION PLAT

All Distances must be from the outer boundaries of the section

Operator TEXACO EXPLORATION & PRODUCTION			LEASE WEST DOLLARHIDE DRINKARD UNIT		Well No. 144
Unit Letter J	Section 32	Township 24 SOUTH	Range 38 EAST	County NMFM	LEA
Actual Footage Location of Well: 1400 feet from the SOUTH line and 1880 feet from the EAST line					
Ground level Elev. 3186'	Producing Formation (ABO &) TUBB DRINKARD(DRINKARD)			Dedicated Acreage: 40 Acres	
DOLLARHIDE TUBB DRINKARD					

1. Outline the acreage dedicated to the subject well by colored pencil or indelible marks on the plat below.

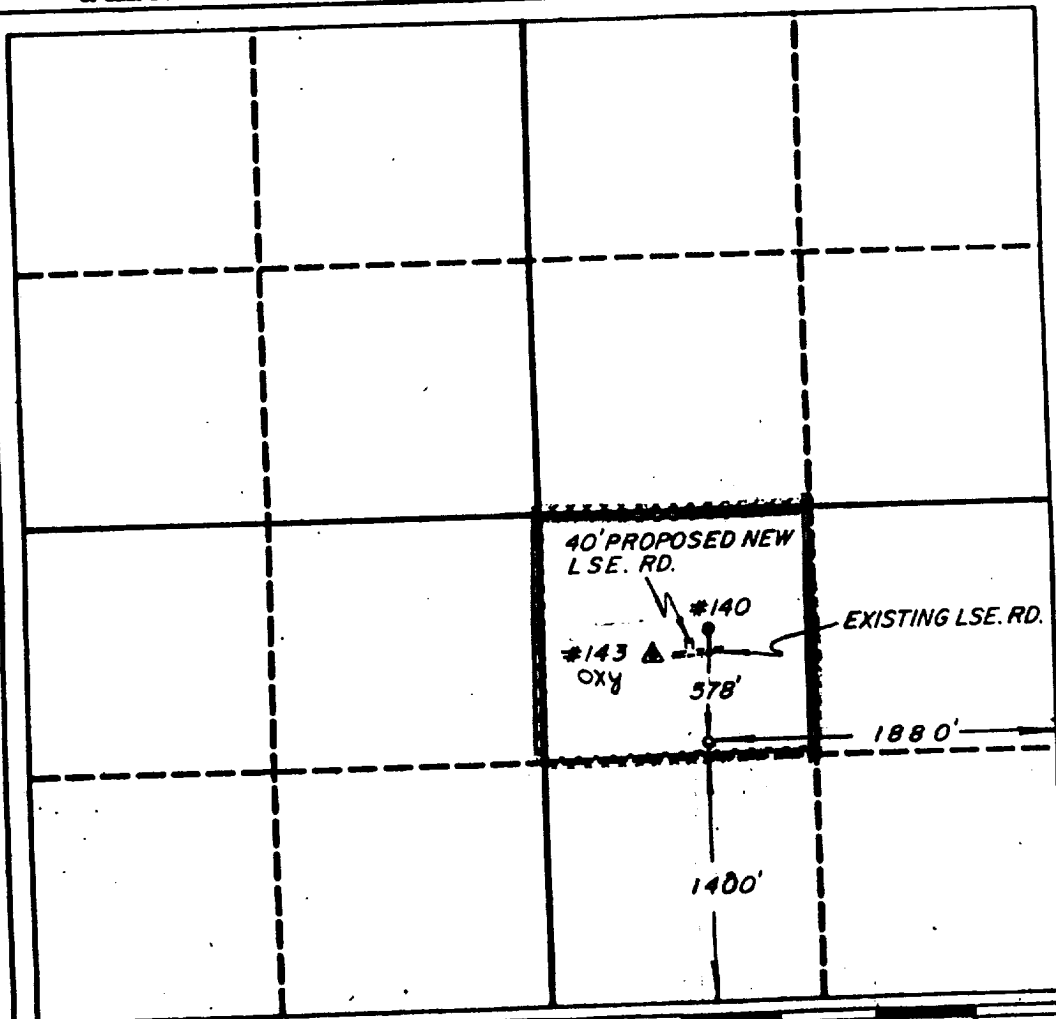
2. If more than one lease is dedicated to the well, outline each and identify the ownership thereof (both as to working interest and royalty).

3. If more than one lease of different ownership is dedicated to the well, have the interest of all owners been consolidated by communitization, unitization, force-pooling, etc.?

☒ Yes ☐ No If answer is "yes" type of consolidation **UNITIZATION**

If answer is "no" list the owners and trust descriptions which have actually been consolidated. (Use reverse side of this form if necessary.)

No allowable well be assigned to the well until all interests have been consolidated (by communitization, unitization, force-pooling, or otherwise) or until a non-standard well, eliminating such interest, has been approved by the Division.



OPERATOR CERTIFICATION

I hereby certify that the information contained herein is true and complete to the best of my knowledge and belief.

Signature

Printed Name

R. D. MARIOTT

Position

DIVISION SURVEYOR

Company

TEXACO E & P

Date

December 16, 1993

SURVEYOR CERTIFICATION

I hereby certify that the well location shown on this plat was plotted from field notes of actual surveys made by me or under my supervision, and that the same is true and correct to the best of my knowledge and belief.

December 16, 1993

Date Surveyed

Signature & Seal of Professional Surveyor

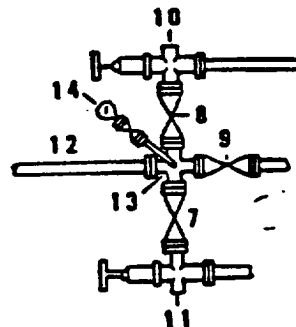
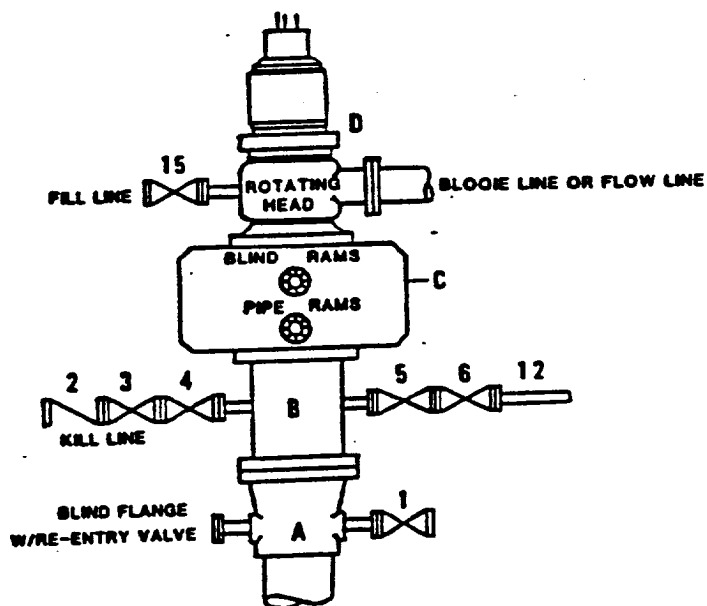
[Signature]

Certificate No.

4882

**DRILLING CONTROL
CONDITION II-B 3000 WP
FOR AIR DRILLING OR
WHERE NITROGEN OR AIR BLOWS ARE EXPECTED**

H₂S TRIM REQUIRED
YES ☒ NO ☐



**DRILLING CONTROL
MATERIAL LIST - CONDITION II - B**

- | | |
|------------|---|
| A | Texaco Wellhead |
| B | 3000# W.P. drilling spool with a 2" minimum flanged outlet for kill line and 3" minimum flanged outlet for choke line. |
| C | 3000# W.P. Dual ram type preventer, hydraulic operated with 1" steel, 3000# W.P. control lines (where sub-structure height is adequate, 2 - 3000# W.P. single ram type preventers may be utilized). |
| D | Rotating Head with fill up outlet and extended Blooe Line. |
| 1,3,4,7,8, | 2" minimum 3000# W.P. flanged full opening steel gate valve, or Halliburton Lo Torc Plug valve. |
| 2 | 2" minimum 3000# W.P. back pressure valve. |
| 5,6,9 | 3" minimum 3000# W.P. flanged full opening steel gate valve, or Halliburton Lo Torc Plug valve. |
| 12 | 3" minimum schedule 80, Grade "B", seamless line pipe. |
| 13 | 2" minimum x 3" minimum 3000# W.P. flanged cross. |
| 10,11 | 2" minimum 3000# W.P. adjustable choke bodies. |
| 14 | Cameron Mud Gauge or equivalent (location optional in choke line). |
| 15 | 2" minimum 3000# W.P. flanged or threaded full opening steel gate valve, or Halliburton Lo Torc Plug valve. |



TEXACO, INC.
MIDLAND DIVISION
MIDLAND, TEXAS



SCALE	DATE	EST. NO.	DWG. NO.
DRAWN BY			
CHECKED BY			
APPROVED BY			

EXHIBIT C

STATE OF NEW MEXICO

ENERGY, MINERALS AND NATURAL RESOURCES DEPARTMENT

OIL CONSERVATION DIVISION



BRUCE KING
GOVERNOR

ANITA LOCKWOOD
CABINET SECRETARY

December 28, 1993



POST OFFICE BOX 2088
STATE LAND OFFICE BUILDING
SANTA FE, NEW MEXICO 87504
(505) 827-5800

Texaco Exploration and Production, Inc.
P.O. Box 3109
Midland, TX 79702

Attention: C.P. Basham

Administrative Order NSL-3338

Dear Mr. Basham:

Reference is made to your application dated December 20, 1993 for six unorthodox oil well locations for the purpose of completing an efficient injection/production pattern within your Skelly West Dollarhide Drinkard Waterflood Project Area, established by Division Order No. R-3768, dated May 28, 1969.

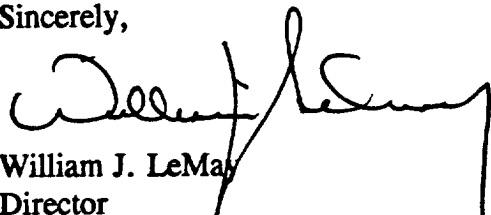
The following described wells are to be located in Townships 24 and 25 South, Range 38 East, NMPM, Dollarhide Tubb-Drinkard Pool, West Dollarhide Drinkard Unit Area, Lea County, New Mexico:

<i>Well No.</i>	<i>Footage Location</i>	<i>Unit</i>	<i>Section</i>	<i>Dedicated 40-Acre Tract</i>
124	300' FNL - 1350' FWL	C	4-25S-38E	Lot 2 (40.42 acres)
141	100' FNL - 2580' FEL	B	32-24S-38E	NW/4 NE/4
142	1400' FSL - 2580' FEL	J	29-24S-38E	NW/4 SE/4
143	1750' FNL - 150' FEL	H	30-24S-38E	SE/4 NE/4
144	1400' FSL - 1880' FEL	J	32-24S-38E	NW/4 SE/4
145	2539' FSL - 2060' FWL	K	32-24S-38E	NE/4 SW/4

Administrative Order NSL-3338
Texaco Exploration and Production, Inc.
December 28, 1993
Page 2

By the authority granted me under the provisions of General Rule 104 F.(1), the above-described unorthodox oil well locations are hereby approved.

Sincerely,

A handwritten signature in black ink, appearing to read 'William J. LeMay', is written over the printed name and title. The signature is fluid and cursive, with a long horizontal stroke extending to the right.

William J. LeMay
Director

WJL/MES/amg

cc: Oil Conservation Division - Hobbs
US Bureau of Land Management - Carlsbad
NM State Land Office - Santa Fe



Texaco Exploration and Production Inc
Midland Producing Division

500 N Loraine
Midland TX 79701

P O Box 3109
Midland TX 79702

December 20, 1993

GOV - STATE AND LOCAL GOVERNMENTS

Unorthodox Locations

West Dollarhide Drinkard Unit

Well Nos. 124, 141, 142, 143, 144, 145, & 146

Lea County, New Mexico

State of New Mexico

Energy and Minerals Department

Oil Conservation Division

P. O. Box 2088

Santa Fe, New Mexico 87501-2088

Attention: Mr. Michael E. Stogner

Gentlemen:

An exception, by administrative approval, to Rule 104 F.I. is requested for Texaco Exploration and Production Inc.'s West Dollarhide Drinkard Unit Well Nos. 124, 141, 142, 143, 144, 145, and 146. The wells are located as follows:

Well No. 124:	300' FNL & 1350' FWL,	Sec. 4, T-25-S, R-38-E
Well No. 141:	100' FNL & 2580' FEL,	Sec.32, T-24-S, R-38-E
Well No. 142:	1400' FSL & 2580' FEL,	Sec.29, T-24-S, R-38-E
Well No. 143:	1750' FNL & 150' FEL,	Sec.30, T-24-S, R-38-E
Well No. 144:	1400' FSL & 1880' FEL,	Sec.32, T-24-S, R-38-E
Well No. 145:	2539' FSL & 2060' FWL,	Sec.32, T-24-S, R-38-E
Well No. 146:	810' FNL & 2096' FWL,	Sec.32, T-24-S, R-38-E

The wells must be drilled in these locations to ensure proper development on 10-acre spacing. Wells drilled previously on 10-acre spacing have proven to be viable wells. These wells will be completed in the Drinkard formation.

It should be noted that there are no affected offset operators to Well Nos. 124, 141, 142, 143, 144, 145, or 146. Well No. 143 is on Federal Minerals.

Attached are Forms C-102 for each well and a lease plat showing the existing wells, and locations of the subject wells.

Yours very truly,

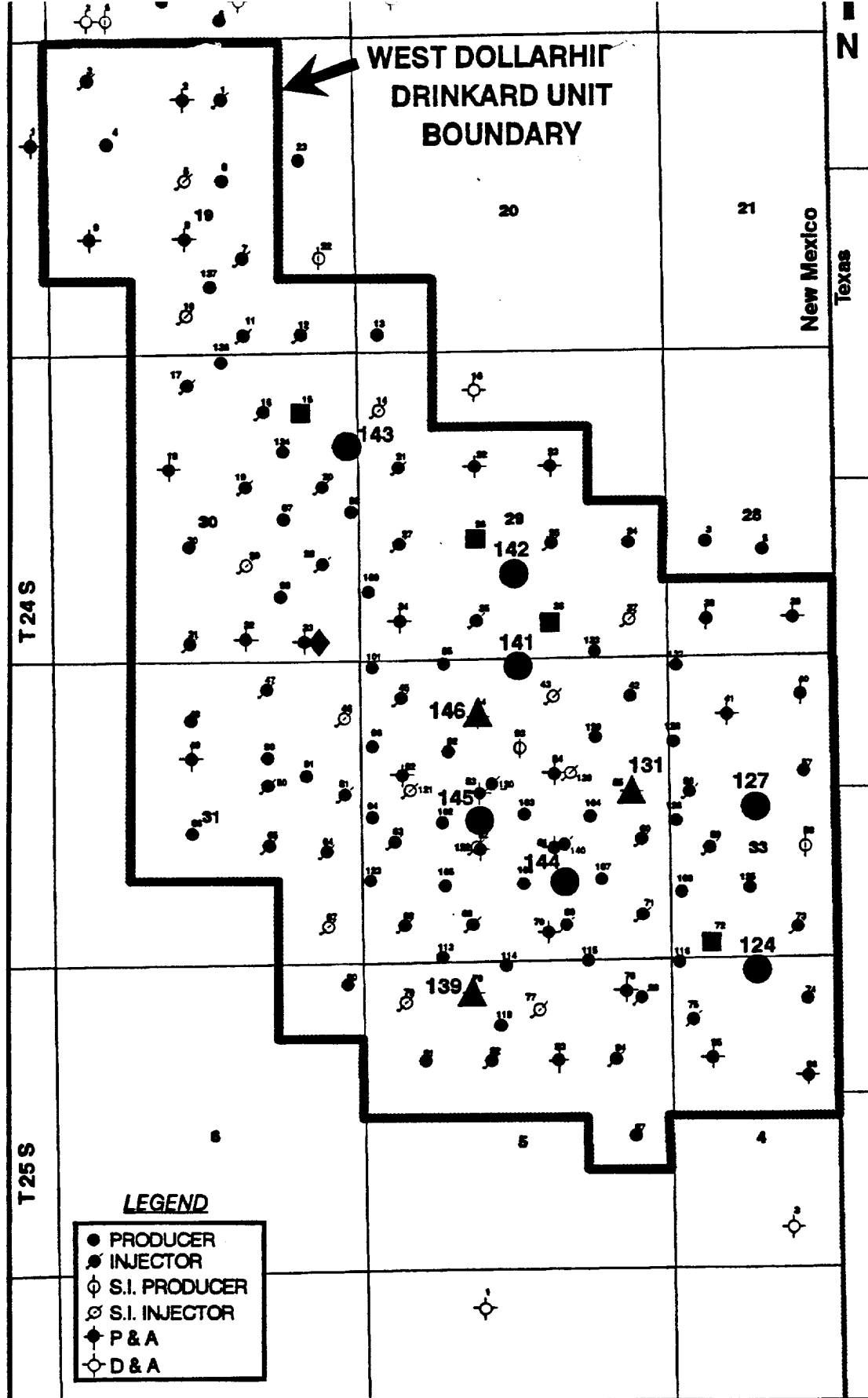
C.P. Basham / CWH

C. P. Basham
Drilling Operations Manager

CWH:cwh

cc: NMOC, P. O. Box 1980, Hobbs, NM 88240

cc: BLM, P. O. Box 1778, Carlsbad, NM 88220



PROPOSED 1994 PROGRAM

- Producer
- ▲ Injector
- Conversion
- ◆ Re-entry (Injector)



1 Mile

TEXACO E & P INC. Midland, Texas	
WEST DOLLARHIDE DRINKARD UNIT Lea County, New Mexico	
PROPOSED 1994 INFILL DRILLING AND CONVERSION PROGRAM	
NAME: J. Gibbs	DATE: Dec. 3, 1993