

UNITED STATES
DEPARTMENT OF THE INTERIOR
BUREAU OF LAND MANAGEMENT

APPLICATION FOR PERMIT TO DRILL OR DEEPEN

1a. TYPE OF WORK

DRILL ☒

DEEPEN ☐

b. TYPE OF WELL

OIL WELL ☒

GAS WELL ☐

OTHER

SINGLE ZONE ☒

MULTIPLE ZONE ☐

2. NAME OF OPERATOR

Enron Oil & Gas Company

3. ADDRESS AND TELEPHONE NO.

P. O. Box 2267, Midland, Texas 79702

4. LOCATION OF WELL (Report location clearly and in accordance with any State requirements.)*

At surface

2080 1980' FNL & 960' FWL

At proposed prod. zone

2080 1980' FNL & 960' FWL

Unit E

14. DISTANCE IN MILES AND DIRECTION FROM NEAREST TOWN OR POST OFFICE*

25 miles west of Jal, NM

15. DISTANCE FROM PROPOSED*

LOCATION TO NEAREST PROPERTY OR LEASE LINE, FT.

(Also to nearest drig. unit line, if any) 360

16. NO. OF ACRES IN LEASE

320

17. NO. OF ACRES ASSIGNED TO THIS WELL

40

18. DISTANCE FROM PROPOSED LOCATION*

TO NEAREST WELL, DRILLING, COMPLETED, OR APPLIED FOR, ON THIS LEASE, FT.

1821

19. PROPOSED DEPTH

12,650

20. ROTARY OR CABLE TOOLS

Rotary

21. ELEVATIONS (Show whether DF, RT, GR, etc.)

3400.4' GR

22. APPROX. DATE WORK WILL START*

2-25-94

23.

PROPOSED CASING AND CEMENTING PROGRAM

No Water Basin

SIZE OF HOLE	GRADE SIZE OF CASING	WEIGHT PER FOOT	SETTING DEPTH	QUANTITY OF CEMENT
14-3/4	11-3/4	42# H-40 A ST&C	650	250 sx CIRCULATED
11	8-5/8	32# J-55 ST&C	5200	1100 sx CIRCULATED
7-7/8	5-1/2	17# P-110 LT&C	12650	1200 sx Est TOC 7500'

OPER. OGRID NO. 007377

PROPERTY NO. 13208

POOL CODE 51020

EFF. DATE 2-28-94

API NO. 3D-025-32433

RECEIVED
NOV 22 9 23 AM '93
OIL & GAS
NEW MEXICO

Acreage is Dedicated.

Approval Subject to
General Requirements and
Special Stipulations
Attached

IN ABOVE SPACE DESCRIBE PROPOSED PROGRAM: If proposal is to deepen, give data on present productive zone and proposed new productive zone. If proposal is to drill or deepen directionally, give pertinent data on subsurface locations and measured and true vertical depths. Give blowout preventer program, if any.

24.

SIGNED

Betty Gildon Betty Gildon

TITLE Regulatory Analyst

DATE 11/18/93

(This space for Federal or State office use)

PERMIT NO.

APPROVAL DATE

Application approval does not warrant or certify that the applicant holds legal or equitable title to those rights in the subject lease which would entitle the applicant to conduct operations thereon.

CONDITIONS OF APPROVAL, IF ANY:

APPROVED BY

Timothy P. O'Brien

TITLE

AREA MANAGER

DATE

FEB 22 1994

*See Instructions On Reverse Side

Submit to Appropriate
District Office
State Lease - 4 copies
Fee Lease - 3 copies

State of New Mexico
Energy, Minerals and Natural Resources Department

Form C-102
Revised 1-1-89

OIL CONSERVATION DIVISION

DISTRICT I

P.O. Box 1980, Hobbs, NM 88240

DISTRICT II

P.O. Drawer DD, Artesia, NM 88210

DISTRICT III

1000 Rio Brazos Rd., Aztec, NM 87410

P.O. Box 2088

Santa Fe, New Mexico 87504-2088

WELL LOCATION AND ACREAGE DEDICATION PLAT

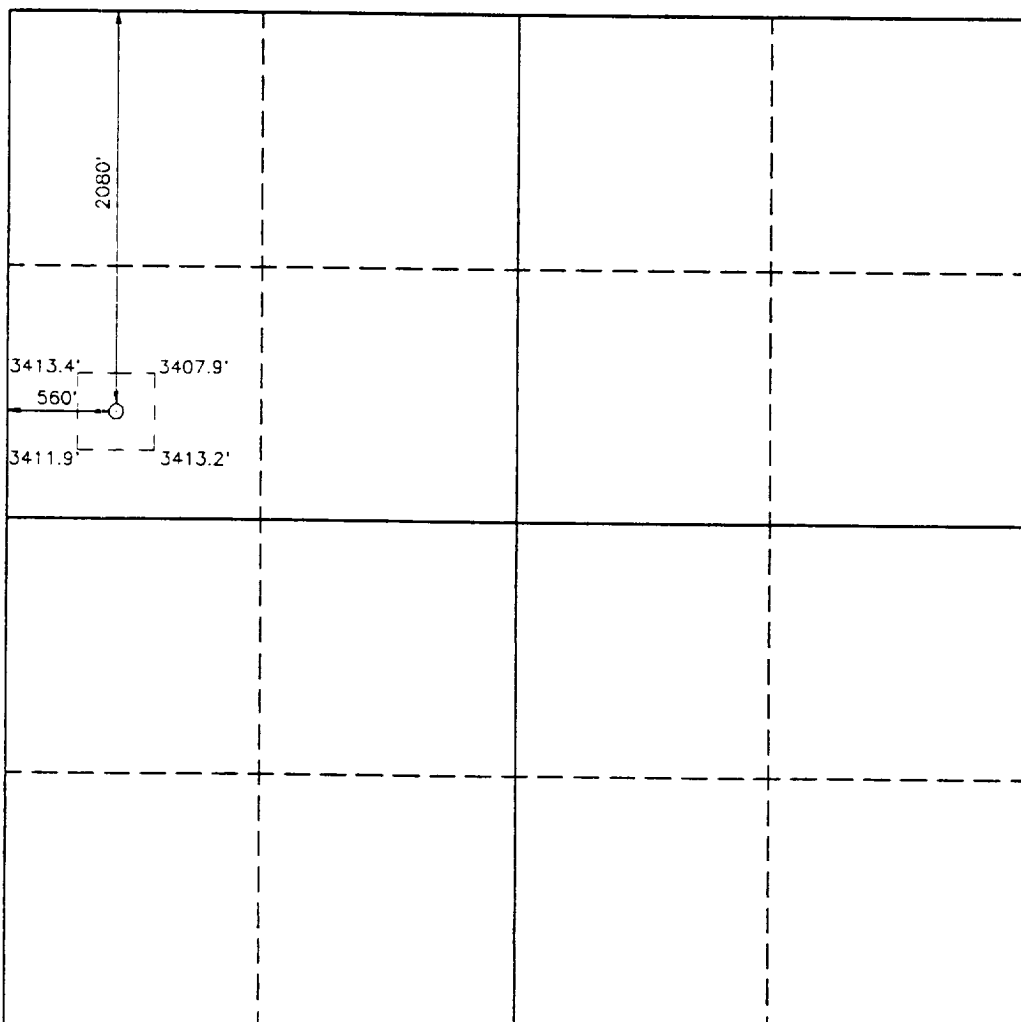
All Distances must be from the outer boundaries of the section

Operator ENRON OIL & GAS CO.			Lease DIAMOND 7 FEDERAL		Well No. 4
Unit Letter E	Section 7	Township 25 SOUTH	Range 34 EAST	County LEA	
Actual Footage Location of Well: 2080 feet from the NORTH line and 560 feet from the WEST line					
Ground Level Elev. 3417.2'		Producing Formation Bone Spring		Pool Red Hills	Dedicated Acreage: 40 Acres

1. Outline the acreage dedicated to the subject well by colored pencil or hatchure marks on the plat below.
2. If more than one lease is dedicated to the well, outline each and identify the ownership thereof (both as to working interest and royalty).
3. If more than one lease of different ownership is dedicated to the well, have the interest of all owners been consolidated by communitization, unitization, force-pooling, etc.?
☐ Yes ☐ No If answer is "yes" type of consolidation _____

If answer is "no" list of owners and tract descriptions which have actually been consolidated. (Use reverse side of this form necessary.)

No allowable will be assigned to the well unit all interests have been consolidated (by communitization, unitization, forced-pooling, otherwise) or until a non-standard unit, eliminating such interest, has been approved by the Division.



OPERATOR CERTIFICATION

I hereby certify the the information contained herein is true and complete to the best of my knowledge and belief.

Signature

Printed Name

Betty Gildon
Regulatory Analyst

Company

Enron Oil & Gas Company

Date

12/29/93

SURVEYOR CERTIFICATION

I hereby certify that the well location shown on this plat was plotted from field notes of actual surveys made by me or under my supervision, and that the same is true and correct to the best of my knowledge and belief.

Date Surveyed

DECEMBER 9, 1993

Signature & Seal of
Professional Surveyor

Certificate No. 878
JOHN W. WEST
3239
RONALD J. EDSON
7977
GARY L. JONES
93-1-2-2085

DRILLING PROGRAM

Enron Oil & Gas Company
Diamond "7" Federal, Well No. 4
~~20~~80' FNL & ~~5~~60' FWL
Sec. 7, T25S, R34E
Lea County, New Mexico

1. Geologic Name of Surface Formation:

Permian

2. Estimated Tops of Important Geologic Markers:

Rustler	850'
Delaware Mt. Group	5175'
Bone Spring Lime	9275'
3rd Bone Spring Sand	12400'
TD	12650'

3. Estimated Depths of Anticipated Fresh Water, Oil or Gas:

Upper Permian Sands	100'	Fresh Water
3rd Bone Spring Sand	12400'	Oil

No other formations are expected to give up oil, gas or fresh water in measurable quantities. The surface fresh water sands will be protected by setting 11-3/4" casing at 650' and circulating cement back to surface, and 8-5/8" casing will be set at 5200' with cement circulated back to surface.

21980' FNL & 560' FWL

Pipe rams will be operationally checked each 24 hour period. Blind rams will be operationally checked on each trip out of the hole. These checks will be noted on the daily tour sheets. A 2" kill line and 4" choke line will be included in the drilling spool located below the ram-type BOP. Other accessories to the BOP equipment will include a kelly cock and floor safety valve (inside BOP) and choke lines and choke manifold with 5000 psi WP rating.

RECEIVED

ENRON OIL & GAS COMPANY

Diamond 7 Federal #4

JAN 17 8 30 AM '84

ATTACHMENT I

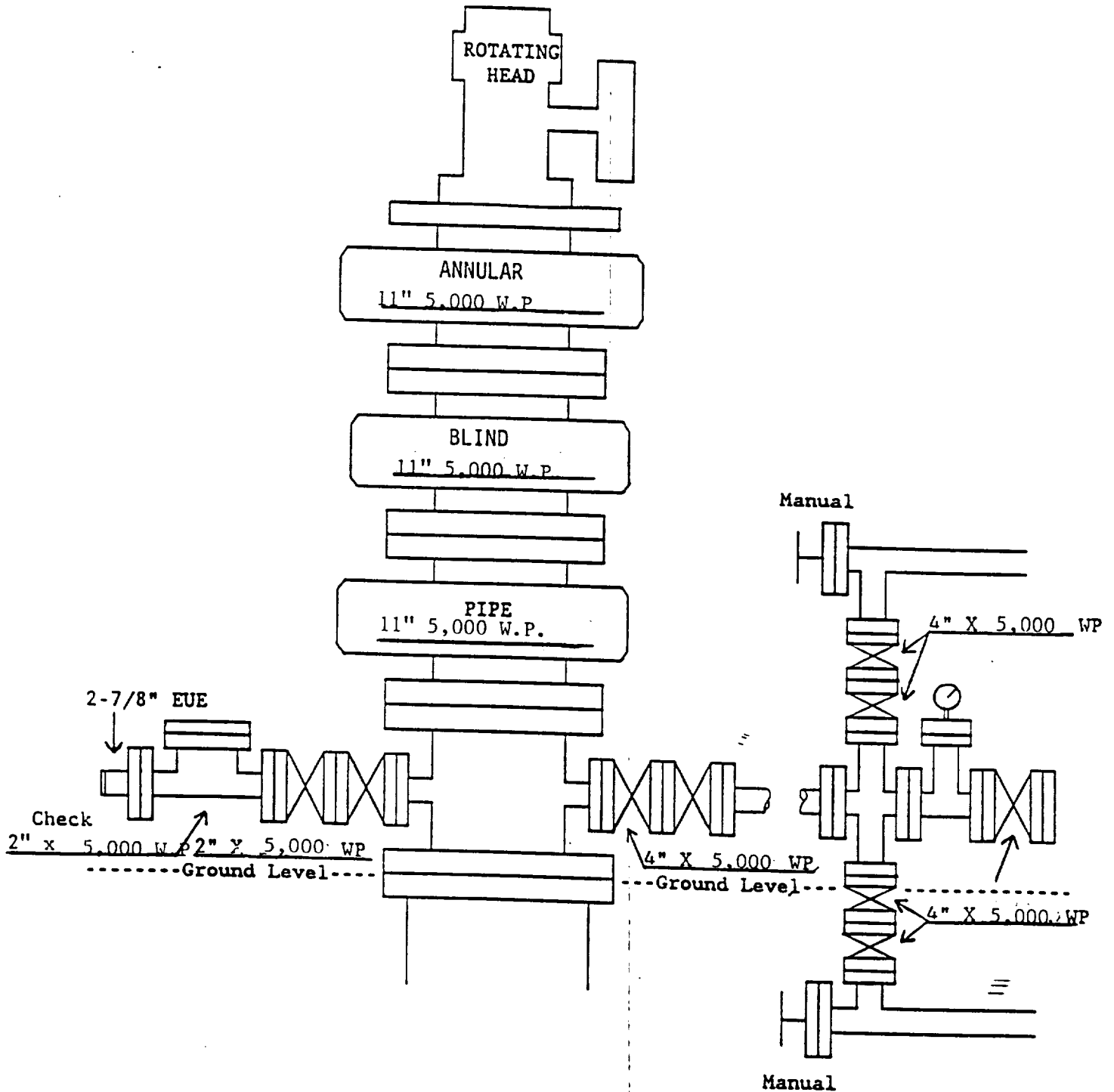


EXHIBIT 1