

SUBMIT IN TRIPLICATE

UNIT  
DEPARTMENT  
BUREAU OF L

OPER. OGRID NO. 22351  
PROPERTY NO. 10929  
POOL CODE 35280  
EFF. DATE 5/9/95  
API NO. 30-025-32948

FORM APPROVED  
Budget Bureau No. 1004-0136  
Expires: December 31, 1991

APPLICATION FOR PERMIT TO DRILL OR DEEPEN

1a. Type of Work **DRILL** ☒ **DEEPEN** ☐  
1b. Type of Well **SINGLE ZONE** ☒  
OIL WELL ☒ GAS WELL ☐ OTHER ☐ **MULTIPLE ZONE** ☐

2. Name of Operator **TEXACO EXPLORATION & PRODUCTION INC.**

3. Address and Telephone No. **P.O. Box 3109, Midland Texas 79702 688-4606**

4. Location of Well (Report location clearly and in accordance with any State requirements.)  
At Surface  
Unit Letter **N** : **990** Feet From The **SOUTH** Line and **1825** Feet From The **WEST** Line  
At proposed prod. zone  
**SAME**

14. Distance in Miles and Direction from Nearest Town or Post Office\*  
**5 MILES NE OF JAL, NM**

15. Distance From Proposed\* Location to Nearest Property or Lease Line, Ft. (also to nearest drig. unit line, if any) **815'**  
16. No. of Acres in Lease **160**

18. Distance From Proposed Location\* to Nearest Well, Drilling, Completed or Applied For, On This Lease, Ft. **820'**  
19. Proposed Depth **7225'**

21. Elevations (Show whether DF, RT, GR, etc.)

**GR-3180'**

5. Lease Designation and Serial No.

**LC-032874-A**

6. If Indian, Allottee or Tribe Name

7. If Unit or CA, Agreement Designation

8. Well Name and Number  
**G. L. ERWIN 'A' FEDERAL**

6

9. API Well No.

10. Field and Pool, Exploratory Area  
**JUSTIS BLINEBRY/ JUSTICE TUBB DRINKARD**

11. SEC., T., R., M., or BLK. and Survey or Area  
Sec. **35**, Township **24-S**, Range **37-E**

12. County or Parish

**LEA**

13. State

**NM**

17. No. of Acres Assigned To This Well  
**40**

20. Rotary or Cable Tools  
**ROTARY**

22. Approx. Date Work Will Start\*

**4/30/95**

23. PROPOSED CASING AND CEMENT PROGRAM

SIZE OF HOLE	GRADE, SIZE OF CASING	WEIGHT PER FOOT	SETTING DEPTH	QUANTITY OF CEMENT
11	WC50, 8 5/8	24#	1000'	525 SACKS - <u>CIRCULATE</u>
7 7/8	WC50/L80, 5 1/2	15.5 & 17#	7225'	2000 SACKS - <u>CIRCULATE</u>

CEMENTING PROGRAM:

SURFACE CASING - 325 SACKS CLASS C W/ 4% GEL, 2% CACL2 (13.5 PPG, 1.74 CF/S, 9.11 GW/S). F/B 200 SACKS CLASS C W/ 2% CACL2 (14.8 PPG, 1.34 CF/S, 6.3 GW/S).

PRODUCTION CASING - 1500 SACKS 35/65 POZ CLASS H W/ 6% GEL, 5% SALT, 1/4# FLOCELE (12.8 PPG, 1.94 CF/S, 10.4 GW/S). F/B 500 SACKS CLASS H (15.6 PPG, 1.18 CF/S, 5.2 GW/S).

THERE ARE NO OTHER OPERATORS IN THIS QUARTER QUARTER SECTION.

ESTIMATED DRILLING DAYS TO T.D.: 12 DAYS.

TEXACO PLANS TO LOG AND POSSIBLY TEST THE ABO AND DEVONIAN.

APPROVAL SUBJECT TO  
GENERAL REQUIREMENTS AND  
SPECIAL STIPULATIONS  
ATTACHED

In Above Space Describe Proposed Program: If proposal is to deepen, give data on present productive zone and proposed new productive zone. If proposal is to drill or deepen directionally, give pertinent data on subsurface locations and measured true verticle depths. Give blowout preventer program, if any.

24. I hereby certify that the foregoing is true and correct

SIGNATURE C. Wade Howard TITLE Eng. Assistant DATE 3/30/95  
TYPE OR PRINT NAME C. Wade Howard

(This space for Federal or State office use)

PERMIT NO. \_\_\_\_\_ APPROVAL DATE \_\_\_\_\_

Application approval does not warrant or certify that the applicant holds legal or equitable title to those rights in the subject lease which would entitle the applicant to conduct operations thereon.

APPROVED BY /s/ Yolanda Vega TITLE ACTING ADEA MANAGER DATE 5-4-95  
CONDITIONS OF APPROVAL, IF ANY:

Title 18 U.S.C. Section 1001, makes it a crime for any person knowingly and willfully to make to any department or agency of the United States any false, fictitious or fraudulent statements or representations as to any matter within its jurisdiction.

**RECEIVED**

**1995**

**OFFICE**

DISTRICT I  
P. O. Box 1980, Hobbs, NM 88240

DISTRICT II  
P. O. Drawer 80, Artesia, NM 88210

DISTRICT III  
1900 Rio Brazos Rd., Aztec, NM 87410

DISTRICT IV  
P. O. Box 2088, Santa Fe, NM 87504-2088

State of New Mexico  
Energy, Minerals and Natural Resources Department

OIL CONSERVATION DIVISION  
PO Box 2088  
Santa Fe, NM 87504-2088

Form C-102  
Revised February 10, 1994

Instructions on back

Submit to Appropriate District Office

State Lease-4 copies  
Fee Lease-3 copies

☐ AMENDED REPORT

WELL LOCATION AND ACREAGE DEDICATION PLAT

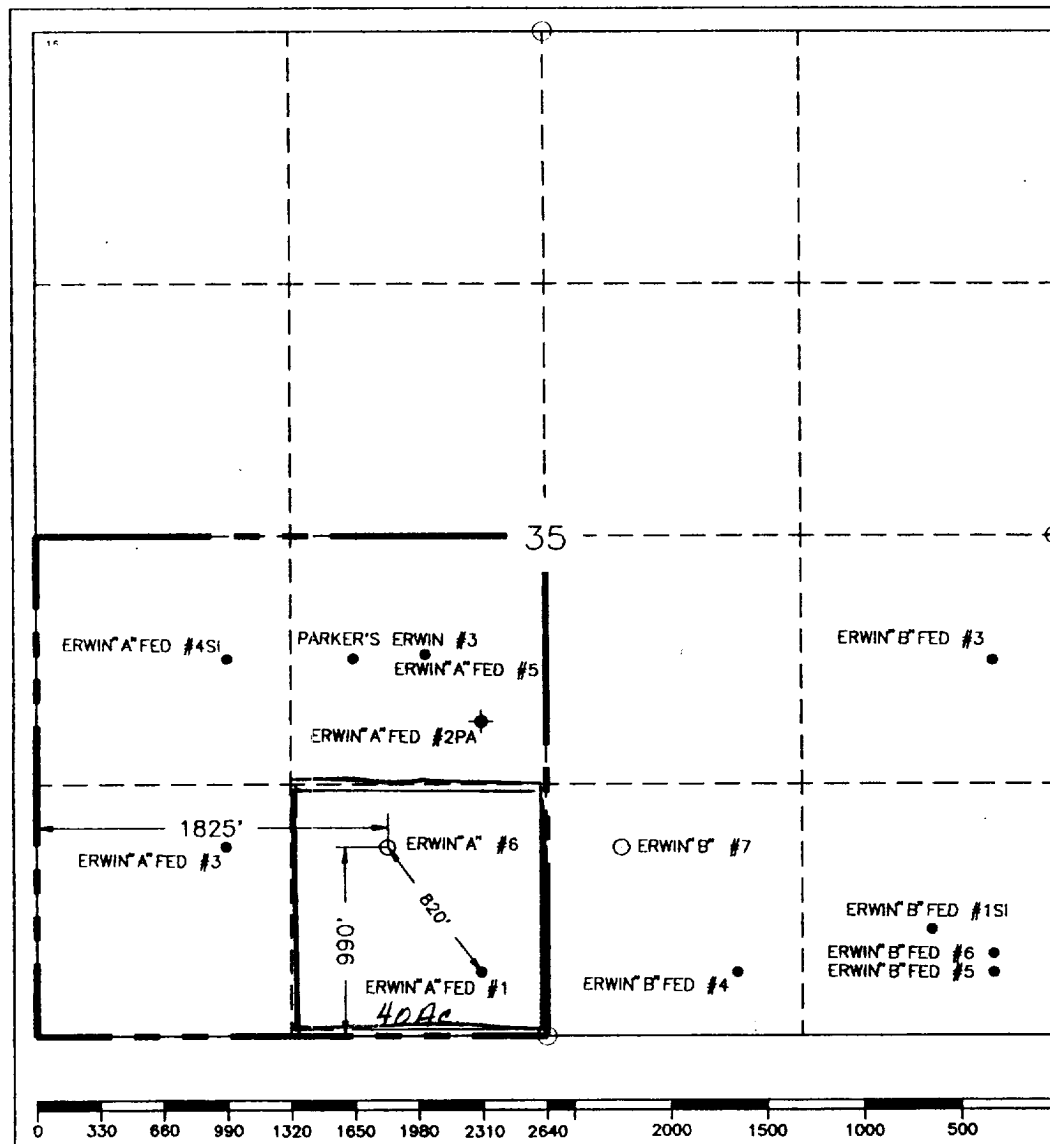
<sup>1</sup> API Number 30-025-32948		<sup>2</sup> Pool Code 3528D		<sup>3</sup> Pool Name <34700> Justis Blirfery; Justis Tubb Drinkard	
<sup>4</sup> Property Code 10929		<sup>5</sup> Property Name G.L. Erwin "A" Federal			
<sup>7</sup> Well Number 6		<sup>8</sup> Operator Name TEXACO EXPLORATION & PRODUCTION, INC.			
<sup>9</sup> Elevation 3180'					

<sup>10</sup> Surface Location									
<sup>11</sup> Tr or lat no	Section	Township	Range	Lot ldn	Feet from the	North/South line	Feet from the	East/West line	<sup>12</sup> County
N	35	24-S	37-E		990'	South	1825'	West	Lea

<sup>11</sup> Bottom Hole Location If Different From Surface									
<sup>11</sup> Tr or lat no	Section	Township	Range	Lot ldn	Feet from the	North/South line	Feet from the	East/West line	<sup>12</sup> County

<sup>13</sup> Indicated Acres 40	<sup>14</sup> Joint or Infill	<sup>15</sup> Consolidation Code	<sup>16</sup> Order No.
-------------------------------------	-------------------------------	----------------------------------	-------------------------

NO ALLOWABLE WILL BE ASSIGNED TO THIS COMPLETION UNTIL ALL INTERESTS HAVE BEEN CONSOLIDATED  
OR A NON-STANDARD UNIT HAS BEEN APPROVED BY THE DIVISION.



<sup>17</sup> OPERATOR CERTIFICATION	
I hereby certify that the information contained herein is true and complete to the best of my knowledge and belief.	
Signature	
Printed Name C. Wade Howard	
Position Engineer's Assistant	
Company Texaco Expl. & Prod. Inc.	
Date March 28, 1995	
<sup>18</sup> SURVEYOR CERTIFICATION	
I hereby certify that the well location shown on this plat was plotted from field notes of actual surveys made by me or under my supervision, and that the same is true and correct to the best of my knowledge and belief.	
Date Surveyed March 22, 1995	
Signature & Seal of Professional Surveyor	
Certificate No. 7254 John S. Piper	
Sheet 8 of 8	

## DRILLING PROGRAM

G. L. ERWIN 'A' FEDERAL WELL No. 6

### **SURFACE DESCRIPTION:**

See Item 11 (other information) in the attached Surface Use and Operations Plan.

**FORMATION TOPS:** Estimated KB Elevation: 3190'

<u>Formation</u>	<u>Depth</u>	<u>Lithology</u>	<u>Fluid Content</u>
Rustler	925'	Anhy, Salt	----
Tansill	2270'	Anhy, Dolo	----
Yates	2400'	Sandstone, Anhy	----
Queen	3125'	Sandstone, Anhy	----
Blinebry	5130'	Dolomite, Anhy	Oil
Drinkard	6020'	Dolomite, Anhy	Oil
Abo	6250'	Dolo, Limestone	Oil
Devonian	6975'	Dolomite	Oil

The base of the salt section is the top of the Tansill at 2270'. No abnormal pressures or temperatures are anticipated to be encountered in this well. H2S is present in the Blinebry. H2S RADIUS OF EXPOSURE: 100ppm = 26', 500ppm = 12', based on 300ppm H2S and 380 MCF (see attached H2S Drilling Operations Plan. H2S equipment to be operational prior to drilling out Surface Casing Shoe.)

### **PRESSURE CONTROL EQUIPMENT:**

A 3000 psi Dual Ram type preventer with rotating head will be used. (See Exhibit C). We do not plan to have an annular preventer. We will be able to achieve full closure of the well with the double ram preventer. It will be installed after surface casing is set. BOP will be tested each time it is installed on a casing string and at least every 29 days, and operated at least once each 24-hour period during drilling.

A PVT system will not be installed. We will be drilling thru the reserve pit and will circulate the steel pits one hour each tour to check for gains and losses and will be noted on the driller's log, which is Texaco's policy.

We do not plan to run an automatic remote-controlled choke. We will have installed and tested two manual, H2S trimmed, chokes.

**RECEIVED**

1935

OFFICE

**CASING AND CEMENT PROGRAM:**

The casing and cementing programs are detailed on Form 3160-3. All casing will be new.

**Centralizer Program:**

Surface Casing - Centralize the bottom 3 joints and every 4th to surface.

Production Casing - Centralize every 3rd joint on bottom 2000'.

**MUD PROGRAM:**

<u>Depth</u>	<u>Type</u>	<u>Weight</u>	<u>Viscosity</u>
0'-1000'	Fresh Water	8.4	28
1000'-7225'	Brine	10.0	29
Across Pay	Starch	10.0	32

Bottom Hole Pressure at T.D. estimated to be 6.7 PPG EMW.

**LOGGING, TESTING:**

GR-CNL-LDT, GR-DLL-MSFL, and GR-Sonic surveys will be run.

A two-man Mud Logging Unit will be used from 2000' to T.D.

No drill stem tests will be conducted.

No cores will be taken.

**OPERATOR - LANDOWNER AGREEMENT**

**COMPANY:** TEXACO EXPLORATION AND PRODUCTION INC.

**PROPOSED WELL:** G. L. ERWIN "A" FEDERAL No. 6

**FEDERAL LEASE NUMBER:** LC-032874-A

This is to advise that Texaco Exploration and Production Inc. has an agreement with:  
GEORGE WILLIS; P.O. Box 307, Jct. NM 88252

the surface owner, concerning entry and surface restoration after completion of drilling operations at the above described well.

After abandonment of the well, all pits will be filled and levelled, and all equipment and trash will be removed from the well site. No other requirements were made concerning restoration of the well site.

3-30-95  
Date

C. Wade Howard  
C. W. Howard  
Engineer's Assistant  
Midland, Texas

**RECEIVED**

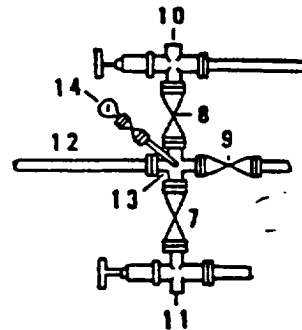
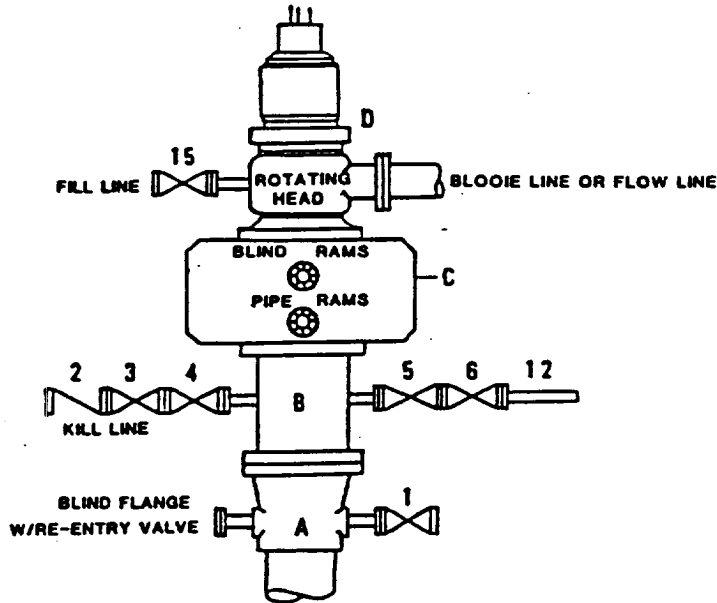
**APR 19 1995**

**WILLIAMS HODGINS  
OFFICE**



**DRILLING CONTROL  
CONDITION II-B 3000 WP  
FOR AIR DRILLING OR  
WHERE NITROGEN OR AIR BLOWS ARE EXPECTED**

H<sub>2</sub>S TRIM REQUIRED  
YES   X   NO       



**DRILLING CONTROL  
MATERIAL LIST - CONDITION II - B**

- |                |   |
|----------------|---|
| A              | Texaco Wellhead   |
| B              | 3000# W.P. drilling spool with a 2" minimum flanged outlet for kill line and 3" minimum flanged outlet for choke line.  |
| C              | 3000# W.P. Dual ram type preventer, hydraulic operated with 1" steel, 3000# W.P. control lines (where sub-structure height is adequate, 2 - 3000# W.P. single ram type preventers may be utilized). |
| D              | Rotating Head with fill up outlet and extended Blooie Line.   |
| 1,3,4,<br>7,8, | 2" minimum 3000# W.P. flanged full opening steel gate valve, or Halliburton Lo Torc Plug valve.   |
| 2              | 2" minimum 3000# W.P. back pressure valve.  |
| 5,6,9          | 3" minimum 3000# W.P. flanged full opening steel gate valve, or Halliburton Lo Torc Plug valve.   |
| 12             | 3" minimum schedule 80, Grade "B", seamless line pipe.  |
| 13             | 2" minimum x 3" minimum 3000# W.P. flanged cross.   |
| 10,11          | 2" minimum 3000# W.P. adjustable choke bodies.  |
| 14             | Cameron Mud Gauge or equivalent ( location optional in choke line).   |
| 15             | 2" minimum 3000# W.P. flanged or threaded full opening steel gate valve, or Halliburton Lo Torc Plug valve.   |



TEXACO, INC.  
MIDLAND DIVISION  
MIDLAND, TEXAS



SCALE	DATE	EST. NO.	DRG. NO.
DRAWN BY			
CHECKED BY			
APPROVED BY			

EXHIBIT C