

UNITED STATES  
DEPARTMENT OF THE INTERIOR  
BUREAU OF LAND MANAGEMENT

FORM APPROVED  
OMB No. 1004-0136  
Expires November 30, 2000

APPLICATION FOR PERMIT TO DRILL OR REENTER

1a. Type of Work: <input type="checkbox"/> DRILL <input checked="" type="checkbox"/> REENTER		5. Lease Serial No. NM NM 14497 S/L; NM NM 19625; NM NM 18640-A; NM NM 24490 B
1b. Type of Well: <input type="checkbox"/> Oil Well <input type="checkbox"/> Gas Well <input type="checkbox"/> Other <input type="checkbox"/> Single Zone <input type="checkbox"/> Multiple Zone		6. If Indian, Allottee or Tribe Name
2. Name of Operator EOG Resources, Inc.		7. If Unit or CA Agreement, Name and No. Red Hills North Unit
3a. Address P.O. Box 2267 Midland, TX 79702		8. Lease Name and Well No. Red Hills North Unit No. 709
3b. Phone No. (include area code) (915) 686-3714		9. API Well No. 30-025-32979
4. Location of Well (Report location clearly and in accordance with any State requirements.) At surface 1980' FNL & 510' FWL (U/L E) At proposed prod. Zone 300' FNL & 850' FWL (U/L D)		10. Field and Pool, or Exploratory Red Hills Bone Springs
14. Distance in miles and direction from nearest town or post office* 20 miles west from Jal, NM		11. Sec., T., R., M., or Blk. And Survey or Area Sec 8, T-25-S, R-34-E SL Sec 18, T-25-S, R-34E BHL
15. Distance from proposed* location to nearest property or lease line, ft. (Also to nearest drlg. Unit line, if any) 300	16. No. of Acres in lease 4,198.70 See Exhibit 6	17. Spacing Unit dedicated to this well 320
18. Distance from proposed location* to nearest well, drilling, completed applied for, on this lease, ft.	19. Proposed Depth TVD 12,250 TMD 18,700	20. BLM/BIA Bond No. on file NM - 2308
21. Elevations (Show whether DF, KDB, RT, GL, etc) GL 3370'	22. Approximate date work will start* 2/1/02	23. Estimated duration 45 Days

24. Attachments

The following completed in accordance with the requirements of Onshore Oil and Gas Order No. 1, shall be attached to this form:

- Well plat certified by a registered surveyor.
- A Drilling Plan.
- A Surface Use Plan (if the location is on National Forest System Lands, the SUPO shall be filed with the appropriate Forest Service Office)
- Bond to cover the operations unless covered by an existing bond on file (see Item 20 above)
- Operator certification.
- Such other site specific information and/or plans as may be required by the authorized officer.

25. Signature <i>Mike Francis</i>	Name (Printed/Typed) Mike Francis	Date 12/20/01
Title Agent		

Approved by (Signature) <i>/S/ JOE G. LARA</i>	Name (Printed/Typed) <i>/S/ JOE G. LARA</i>	Date FEB 26 2002
Title <i>ACTING</i> FIELD MANAGER	Office CARLSBAD FIELD OFFICE	

Application approval does not warrant or certify the applicant holds legal or equitable title to those rights in the subject lease which would entitle the applicant to conduct operations thereon.

Conditions of approval, if any, are attached

Title 18 U.S.C. Section 1001 and Title 43 U.S.C. Section 1212, make it a crime for any person knowingly and willfully to make to any department or agency of the United States any false, fictitious or fraudulent statements or representations as to any matter within its jurisdiction.

\*(Instructions on reverse)

Originally drilled as Diamond "8" Federal No. 2 well.

Carlsbad Controlled Water Basin

OPER. GRID NO. 7377  
PROPERTY NO. 26406  
POOL CODE 5102.0  
EFF. DATE 6-14-02  
API NO 30-025-32979  
APPROVAL SUBJECT TO  
GENERAL REQUIREMENTS AND  
SPECIAL STIPULATIONS  
ATTACHED

*Koz*  
8

District I  
PO Box 1980, Hobbs, NM 88241-1980  
District II  
PO Drawer DD, Artesia, NM 88211-0719  
District III  
1000 Rio Brazos Rd., Aztec, NM 87410  
District IV  
PO Box 2088, Santa Fe, NM 87504-2088

State of New Mexico  
Energy, Minerals & Natural Resources Department

OIL CONSERVATION DIVISION  
PO Box 2088  
Santa Fe, NM 87504-2088

Form C  
Revised February 21,  
Instructions on 1  
Submit to Appropriate District 0  
State Lease - 4 Cc  
Fee Lease - 3 Cc

☐ AMENDED REP

WELL LOCATION AND ACREAGE DEDICATION PLAT

*API Number 30-025-32979		*Pool Code 51020	*Pool Name Red Hills Bone Spring
*Property Code 26406	*Property Name RED HILLS NORTH UNIT		*Well Number 709
*OGRID No. 7377	*Operator Name EOG RESOURCES INC.		*Elevation

<sup>10</sup> Surface Location

UL or lot no. D	Section 8	Township 25-S	Range 34-E	Lot Idn	Feet from the 1980	North/South line NORTH	Feet from the 510	East/West line WEST	County LEA
--------------------	--------------	------------------	---------------	---------	-----------------------	---------------------------	----------------------	------------------------	---------------

<sup>11</sup> Bottom Hole Location If Different From Surface

UL or lot no.	Section	Township	Range	Lot Idn	Feet from the	North/South line	Feet from the	East/West line	County
---------------	---------	----------	-------	---------	---------------	------------------	---------------	----------------	--------

*Dedicated Acres -0-	*Joint or Infill	*Consolidation Code	*Order No.
-------------------------	------------------	---------------------	------------

NO ALLOWABLE WILL BE ASSIGNED TO THIS COMPLETION UNTIL ALL INTERESTS HAVE BEEN CONSOLIDATED OR A NON-STANDARD UNIT HAS BEEN APPROVED BY THE DIVISION

16	N 89°30'15" E (GRID)			17 OPERATOR CERTIFICATION I hereby certify that the information contained herein is true and complete to the best of my knowledge and belief.
EOG RESOURCES INC. RED HILLS NORTH UNIT No. 709 Y=418105.06 X=758425.96 LAT.=32°08'48.24" LONG.=103°29'54.12" THETA=00°26'46" HORIZONTAL DRILLING DIRECTION S 53°23'09" W (GRID)				Signature Mike Francis Printed Name Agent Title 12/21/01 Date
N 00°24'00" W (GRID)				18 SURVEY CERTIFICATION I hereby certify that the well location shown on this plat was plotted from field notes of actual surveys made by or under my supervision, and that the same is true and correct to the best of my belief.
				NOVEMBER 30, 2001 Date of Survey Signature and Seal of Professional Surveyor: James E. Tompkins 14729 Certificate Number 14729
	S 89°35'00" W (GRID)			

District I  
PO Box 1980, Hobbs, NM 88241-1980  
District II  
PO Drawer DD, Artesia, NM 88211-0719  
District III  
1000 Rio Brazos Rd., Aztec, NM 87410  
District IV  
PO Box 2088, Santa Fe, NM 87504-2088

State of New Mexico  
Energy, Minerals & Natural Resources Department

OIL CONSERVATION DIVISION  
PO Box 2088  
Santa Fe, NM 87504-2088

Form C-  
Revised February 21, 1999  
Instructions on 1  
Submit to Appropriate District Office  
State Lease - 4 Copies  
Fee Lease - 3 Copies

☐ AMENDED REPORT

WELL LOCATION AND ACREAGE DEDICATION PLAT

*API Number 30-025-32979		*Pool Code 51020	*Pool Name Red Hills Bone Spring
*Property Code 26406	*Property Name RED HILLS NORTH UNIT		*Well Number 709
*OGRID No. 7277	*Operator Name EOG RESOURCES INC.		*Elevation

<sup>10</sup> Surface Location

UL or lot no.	Section	Township	Range	Lot Idn	Feet from the	North/South line	Feet from the	East/West line	County
---------------	---------	----------	-------	---------	---------------	------------------	---------------	----------------	--------

<sup>11</sup> Bottom Hole Location If Different From Surface

UL or lot no.	Section	Township	Range	Lot Idn	Feet from the	North/South line	Feet from the	East/West line	County
---------------	---------	----------	-------	---------	---------------	------------------	---------------	----------------	--------

*Dedicated Acres 240	*Joint or Infill	*Consolidation Code	*Order No.
-------------------------	------------------	---------------------	------------

NO ALLOWABLE WILL BE ASSIGNED TO THIS COMPLETION UNTIL ALL INTERESTS HAVE BEEN CONSOLIDATED OR A NON-STANDARD UNIT HAS BEEN APPROVED BY THE DIVISION

16	N 89°31'31" E (GRID)		
N 00°26'00" W (GRID)	DIRECTIONAL DRILLING THROUGH SECTION 7, TOWNSHIP 25-S, RANGE 34-E, LEA COUNTY, NEW MEXICO		S 89°25'25" W (GRID)
	HORIZONTAL DRILLING DIRECTION S 53°23'09" W (GRID)		

<sup>17</sup> OPERATOR CERTIFICATION

I hereby certify that the information contained herein is true and complete to the best of my knowledge and belief.

*Mike Francis*  
Signature

Mike Francis

Printed Name

Agent

Title

Date 12/21/01  
123456

<sup>18</sup> SURVEYOR CERTIFICATION

I hereby certify that the well location shown on this plat was plotted from field notes of actual surveys made by or under my supervision, and that the same is true and correct to the best of my belief.

NOVEMBER 30, 2001

Date of Survey

Signature and Seal of Registered Professional Land Surveyor:

*James E. Tombs*  
REGISTERED PROFESSIONAL LAND SURVEYOR  
14729

Certificate Number 14729

District I  
PO Box 1980, Hobbs, NM 88241-1980  
District II  
PO Drawer DD, Artesia, NM 88211-0719  
District III  
1000 Rio Brazos Rd., Aztec, NM 87410  
District IV  
PO Box 2088, Santa Fe, NM 87504-2088

State of New Mexico  
Energy, Minerals & Natural Resources Department

OIL CONSERVATION DIVISION  
PO Box 2088  
Santa Fe, NM 87504-2088

Form C  
Revised February 21, 1998  
Instructions on 1  
Submit to Appropriate District Office  
State Lease - 4 Cc  
Fee Lease - 3 Cc

☐ AMENDED REPORT

WELL LOCATION AND ACREAGE DEDICATION PLAT

1 API Number 30-025-32979		2 Pool Code 51020		3 Pool Name Red Hills Bone Spring	
4 Property Code 26406		5 Property Name RED HILLS NORTH UNIT			6 Well Number 709
7 OGRID No. 7377		8 Operator Name EOG RESOURCES INC.			9 Elevation

10 Surface Location

UL or lot no.	Section	Township	Range	Lot Idn	Feet from the	North/South line	Feet from the	East/West line	County

11 Bottom Hole Location If Different From Surface

UL or lot no.	Section	Township	Range	Lot Idn	Feet from the	North/South line	Feet from the	East/West line	County
E	18	25-S	34-E		300	NORTH	850	WEST	LEA
12 Dedicated Acres 40		13 Joint or Infill		14 Consolidation Code		15 Order No.			

NO ALLOWABLE WILL BE ASSIGNED TO THIS COMPLETION UNTIL ALL INTERESTS HAVE BEEN CONSOLIDATED OR A NON-STANDARD UNIT HAS BEEN APPROVED BY THE DIVISION

<p>16</p> <p>N 89°25'25" E (GRID)</p> <p>HORIZONTAL DRILLING DIRECTION S 53°23'09" W (GRID)</p> <p>EOG RESOURCES INC. RED HILLS NORTH UNIT No. 709 BOTTOM HOLE LOCATION Y=414463.60 X=753525.26</p> <p>N 00°24'30" W (GRID)</p>		<p>17 OPERATOR CERTIFICATION</p> <p>I hereby certify that the information contained herein is true and complete to the best of my knowledge and belief.</p> <p><i>Mike Francis</i> Signature Mike Francis Printed Name Agent 12/21/01 Date</p>	
		<p>18 SURVEYOR CERTIFICATION</p> <p>I hereby certify that the well location shown on this plat was plotted from field notes of actual surveys made by or under my supervision, and that the same is true and correct to best of my belief.</p> <p>NOVEMBER 30, 2001 Date of Survey Signature and Seal of Professional Surveyor: <i>James E. Tompkins</i> James E. Tompkins REGISTERED PROFESSIONAL LAND SURVEYOR NEW MEXICO 14729 Certificate Number 14729</p>	
<p>N 00°25'27" W (GRID)</p> <p>S 89°33'43" W (GRID)</p>		<p>S 00°27'35" E (GRID)</p>	

DRILLING PROGRAM/HORIZONTAL RE-ENTRY

EOG RESOURCES, INC.  
RED HILLS NORTH UNIT NO. 709

LEA COUNTY, NM

1. GEOLOGIC NAME OF SURFACE FORMATION:

Permian

2. ESTIMATED TOPS OF IMPORTANT GEOLOGICAL MARKERS:

Delaware Mt. Group	5250'
Bone Spring Lime	9230'
3 <sup>rd</sup> Bone Spring Sand	12200'
TVD	12,570'
TMD	18700'

3. ESTIMATED DEPTHS OF ANTICIPATED FRESH WATER, OIL OR GAS:

Upper Permian Sands	100'	Fresh Water
3 <sup>rd</sup> Bone Spring Sand	12200'	Oil

No other formations are expected to give up oil, gas or fresh water in measurable quantities. The surface fresh water sands are protected by setting 11 3/4" casing at 679' and cement circulated back to surface.

4. CASING PROGRAM: (Existing Casing)

<u>Hole Size</u>	<u>Interval</u>	<u>OD Casing</u>	<u>Weight Grade Jt. Cond. Type</u>
14 3/4"	0-679'	11 3/4"	42# H40 STC
11"	0-5073'	8 5/8"	32# J55 & HCK55 LTC
7 7/8"	0-12,570'	PLUGGED	

CASING PROGRAM : (Proposed)

<u>Hole Size</u>	<u>Interval</u>	<u>OD Casing</u>	<u>Weight Grade Jt. Cond. Type</u>
7 7/8"	0-12570'	7"	26# HCP-110 STL
4 1/2"	11700-18700MD	4 1/2" Liner	11# HCP-110 HYD 513

CEMENTING PROGRAM: (Existing Casing)

11 3/4" Surface Casing: Circulated cement to surface w/375 Sx. Premium Plus

8 5/8" 1<sup>st</sup> Intermediate: Circulated cement to surface w/1400 Sx. Premium 50/50/Poz

DRILLING PROGRAM/HORIZONTAL RE-ENTRY

EOG RESOURCES, INC.  
RED HILLS NORTH UNIT NO. 709

LEA COUNTY, NM

CEMENTING PROGRAM: (Proposed)

7" 2<sup>nd</sup> Intermediate: 200 sx Premium + 100 sx Premium 50/50 Poz  
4 1/2" Production Liner: 350 sx. Premium "H" & .3% Halad – 344

5. Re-ENTRY PROCEDURE:

The RHNU #709 (Diamond "8" Fed No. 2) well will be re-entered. The existing plugs will be drilled out and 7" casing ran to TD and cemented back to the 8 5/8" casing. A mechanical whipstock will be set @ approximately 11,700', window cut and the well will be horizontally drilled with a 6 1/8" hole to approximately 18,700' MD with a TVD of approximately 12,250'. A 4 1/2" Production Liner will be run and cemented from 18,700' to 11,500'.

See Exhibit 5(a) 5(b)

6. MINIMUM SPECIFICATIONS FOR PRESSURE CONTROL:

The blowout preventer equipment (BOP) shown in Exhibit #1 will consist of a double ram-type (5000 psi WP) preventer and an annular preventer (5000 psi WP). Units will be hydraulically operated and the ram-type will be equipped with blind rams on top and drill pipe rams on bottom. All will be installed on the 8 5/8" intermediate casing and used continuously until TD is reached. Before drilling out of the 8 5/8" intermediate casing, the ram-type BOP and accessory equipment will be tested to 5000 psi and the annular to 70% of rated working pressure (3500 psi).

Pipe rams will be operationally checked each 24 hour period. Blind rams will be operationally checked on each trip out of the hole. These checks will be noted on the daily tour sheets. A 2" kill line and 4" choke line will be included in the drilling spool located below the ram-type BOP. Other accessories to the BOP equipment will include a Kelly cock and floor safety valve (inside BOP) and choke lines and choke manifold with 5000 psi WP rating.

7. TYPES AND CHARACTERISTICS OF THE PROPOSED MUD SYSTEM:

The well will be drilled to TD with a polymer/KCL mud system. The applicable depths and properties of this system are as follows:

<u>Depth</u>	<u>Type</u>	<u>Wt</u> <u>(ppg)</u>	<u>Viscosity</u> <u>(sec)</u>	<u>Waterloss</u> <u>(cc)</u>
5073' -12,570'		8.33-10	28-40	N.C.-10
11,700 – 18,700'		8.33	28-40	N.C. - 10

DRILLING PROGRAM/HORIZONTAL RE-ENTRY

EOG RESOURCES, INC.  
RED HILLS NORTH UNIT NO. 709

LEA COUNTY, NM

Sufficient mud materials to maintain mud properties and meet minimum loss circulation and weight increase requirements will be kept at the wellsite at all times.

8. Auxillary Well Control and Monitoring Equipment:

- (A) A kelly cock will be kept in the drill string at all times.
- (B) A full opening drill pipe stabbing valve (inside BOP) with proper drill pipe connections will be on the rig floor at all times.
- (C) A mud logging unit complete with H2S detector will be continuously monitoring drilling penetration rate and hydrocarbon shows.

9. LOGGING, TESTING AND CORING PROGRAM:

- (A) The electric logging program will consist of a GR-Compensated Neutron from 12570' to 5073'. LWD GR from 11,700' to TD.

10. ABNORMAL CONDITIONS, PRESSURES, TEMPERATURES AND POTENTIAL HAZARDS:

No abnormal pressures or temperatures are anticipated. The estimated bottom-hole temperature (BHT) at TD is 175 degrees F with an estimated maximum bottom-hole pressure (BHP) at TD of 5000 psig. No hydrogen sulfide or other hazardous gases or fluids have been encountered, reported or are known to exist at this depth in this area. No major loss circulation zones have been reported offsetting wells.

11. ANTICIPATED STARTING DATE AND DURATION OF OPERATIONS:

Road and location work will not begin until approval has been received from the BLM. Anticipated spud date is within 30 days after approval at the present time. Once drilling has commenced, the drilling operation should be finished approximately 60 days. If the well is productive, an additional 30 to 45 days will be required for the completion and testing before a decision is made to install permanent facilities.

DRILLING PROGRAM/HORIZONTAL RE-ENTRY

EOG RESOURCES, INC.  
RED HILLS NORTH UNIT NO. 709

LEA COUNTY, NM

**SURFACE USE AND OPERATIONS PLAN**

1. EXISTING ROADS:

Access to location will be made on existing roads and roads previously built for Diamond "8" Fed Com No. 2 well. Exhibit 2

Routine grading and maintenance of roads will be conducted as necessary to maintain their condition as long as any operations continue on this lease.

2. LOCATION OF EXISTING WELLS:

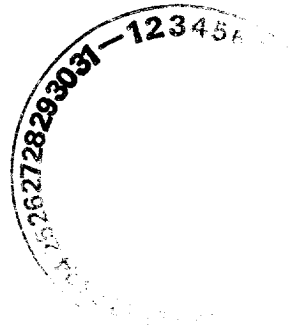
Exhibit #3 shows all existing wells within a one-mile radius of this well.

3. LOCATION OF EXISTING AND/OR PROPOSED FACILITIES:

Existing production facilities and roads located within Red Hills North Unit (Exhibit 3) will be utilized for production from this well.

4. LOCATION AND TYPE OF WATER SUPPLY:

Water for drilling will come from EOG's water supply well located in Section 13, 25-S, R-33-E and be transported to the well site over existing roads.





DRILLING PROGRAM/HORIZONTAL RE-ENTRY

EOG RESOURCES, INC.  
RED HILLS NORTH UNIT NO. 709

LEA COUNTY, NM

5. PLANS FOR RESTORATION OF THE SURFACE:

After completion of drilling and/or completion operations, all equipment and other material not needed for operations will be removed. Location will be cleaned of trash and junk to leave the well in an aesthetically pleasing condition as possible.

Any unguarded pits containing fluid will be fenced until they are dry and back filled.

After abandonment of the well, surface restoration will be in accordance with current federal laws and regulations. Location will be cleaned, and the well pad removed to promote vegetation. Reseeding will be as per BLM specifications.

6. METHODS OF HANDLING WASTE DISPOSAL:

A small reserve pit will be utilized. Reserve pit will be evacuated of drilling fluid within 10 days after the well is completed.

Drill cuttings will be encapsulated in plastic and buried 2' below ground level.

Water produced during tests and waste water will be saved and hauled to a disposal well. Oil produced during tests will be in test tanks until sold.

Current laws and regulations pertaining to the disposal of human waste will be complied with.

Trash, waste paper, garbage and junk will be hauled to an approved disposal site in an enclosed trash trailer.

All trash and debris will be removed from the well site within 30 days after finishing drilling and/or completion operations.

7. ANCILLARY FACILITIES:

No airstrip, campsite, or other facilities will be built.

8. WELL SITE LAYOUT:

Exhibit #3 shows the relative location and dimensions of the well pad, steel mud pit and location of major rig components. Pad area has been staked and flagged.

DRILLING PROGRAM/HORIZONTAL RE-ENTRY

EOG RESOURCES, INC.  
RED HILLS NORTH UNIT NO. 709

LEA COUNTY, NM

10. OTHER INFORMATION:

The area around the well site is grassland and the top soil is duned and sandy. The vegetation is native scrub grasses with abundant sagebrush, yucca, and prickly pear.

There is no permanent or live water in the immediate area.

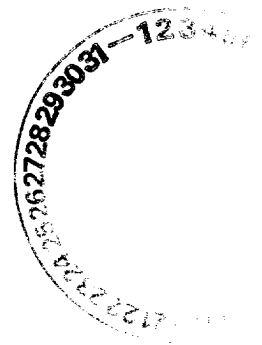
Cultural resources examination has been completed.

11. OPERATORS REPRESENTATIVE:

The field representative responsible for assuring compliance with the approved surface-use and operations plan is as follows:

Mr. Tom Young

Phone: Business 1/505/390/2903  
Home 1/915/697-5639



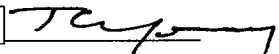
DRILLING PROGRAM/HORIZONTAL RE-ENTRY

EOG RESOURCES, INC.  
RED HILLS NORTH UNIT NO. 709

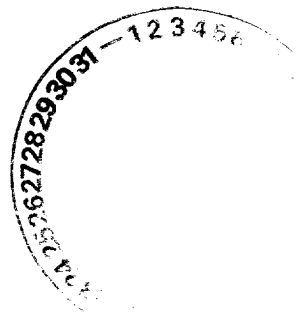
LEA COUNTY, NM

12. CERTIFICATION:

I HEREBY CERTIFY that I, or persons under my direct supervision, have inspected the proposed drill site and access route; that I am familiar with the conditions which presently exist; that the statements made in this plan are, to the best of my knowledge, true and correct; and that the work associated with the operations proposed herein will be performed by EOG Resources, Inc. and its contractors and sub-contractors in conformity with this plan and the terms and conditions under which it is approved.

  
Tom Young  
Drilling Manager

Date: 12/20/01





EOG Resources, Inc.

Red Hills North Unit 709

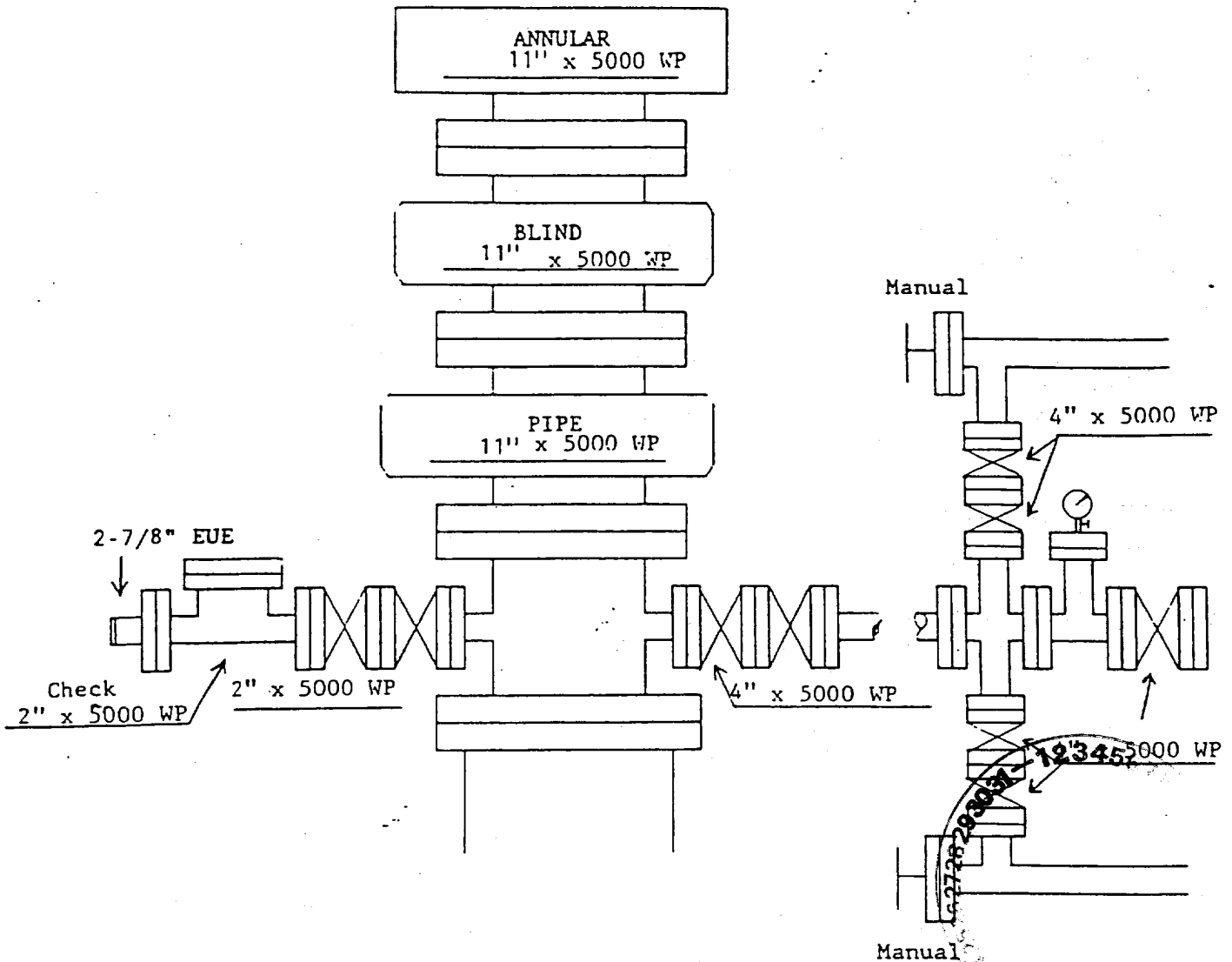
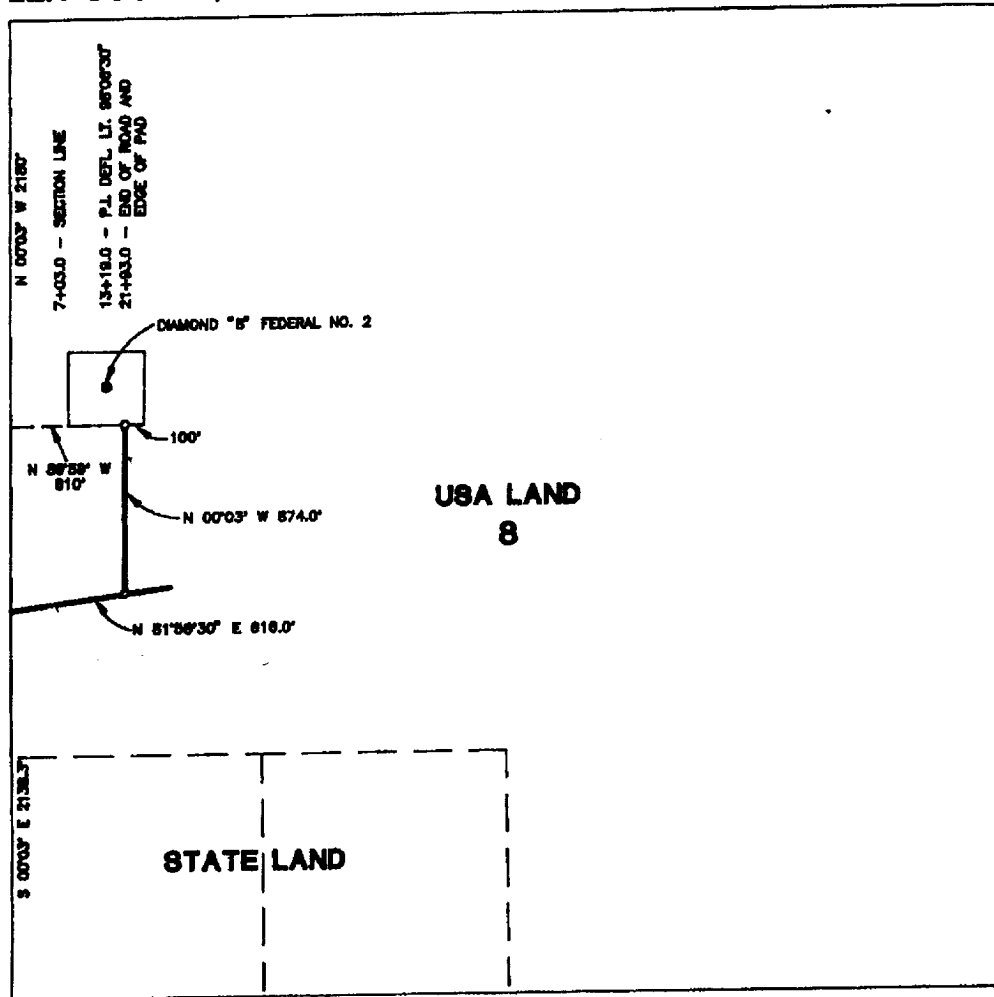


Exhibit 1

**SECTION 8, TOWNSHIP 25 SOUTH, RANGE 34 EAST, N.M.P.M.  
LEA COUNTY, NEW MEXICO**



BEGINNING at a point the east line of Section 7 and west line of Section 8, T-25-S, R-34-E, N.M.P.M., Lea County, New Mexico, from which point the southwest corner of said Section 8 bears S 00° 03' E, 2138.3 feet;  
 THENCE N 81° 58' 30" E, with the centerline of road, 616.0 feet to a bend to the left;  
 THENCE N 00° 03' W, with the centerline of road, 874.0 feet to a point on the south line of the well site for the Diamond #8 Federal No. 2 for the end of this line, from which point the northwest corner of Section 8 bears N 89° 58' W, 610 feet and N 00° 03' W, 2180 feet.

I hereby certify that this plat was prepared from an actual survey made on the ground and meets or exceeds all requirements for land surveys as specified by the state of New Mexico.

*Earl Foote*



Earl Foote  
 Registered Professional Surveyor  
 New Mexico Certificate No. 8278

Red Hills North Unit #709  
 Exhibit 2

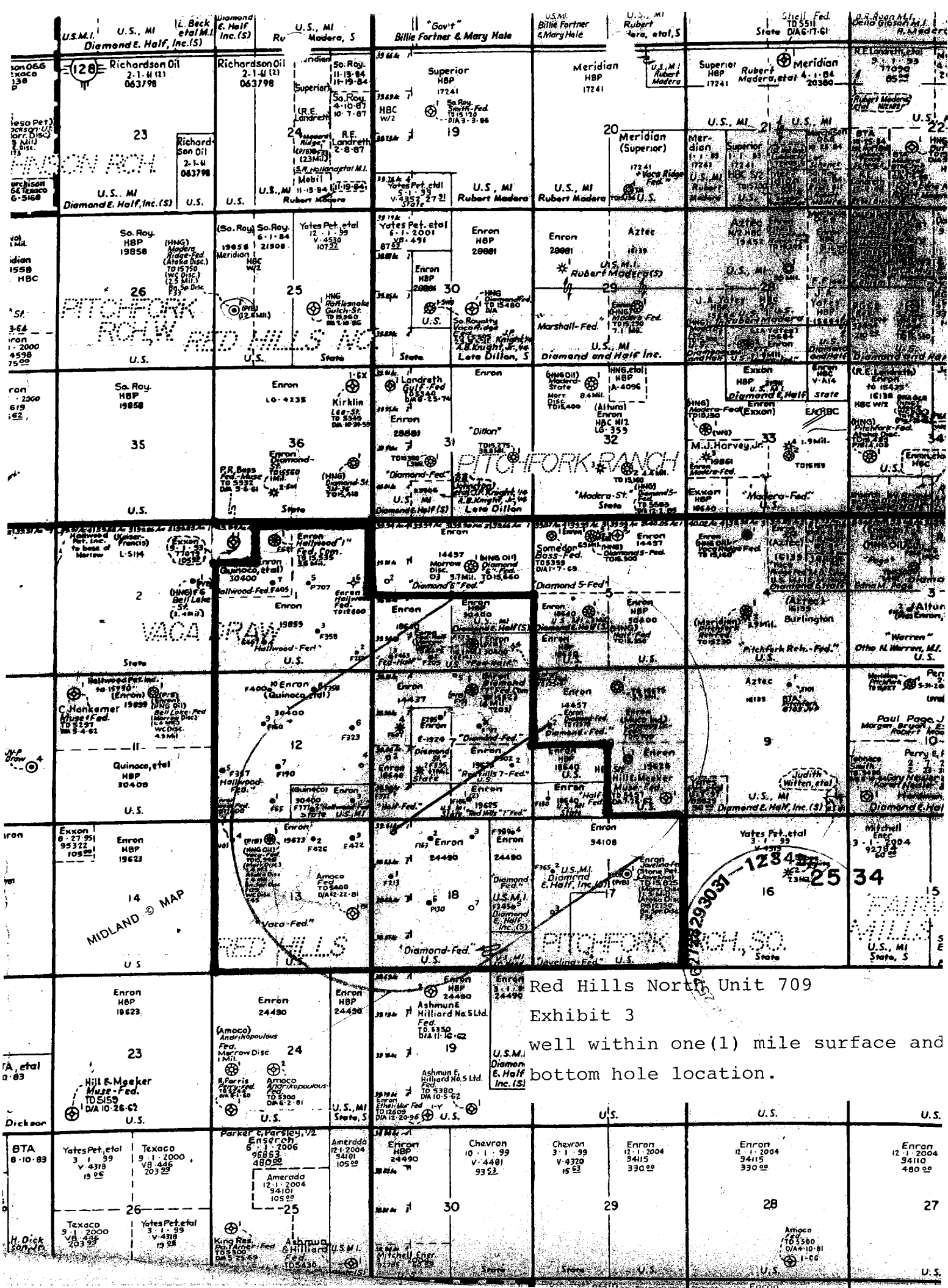
Proposed Road in Section 8,  
 T-25-S, R-34-E, N.M.P.M.  
 Lea County, New Mexico

WEST TEXAS CONSULTANTS, INC.

ENGINEERS-PLANNERS-SURVEYORS

MIDLAND, TEX.

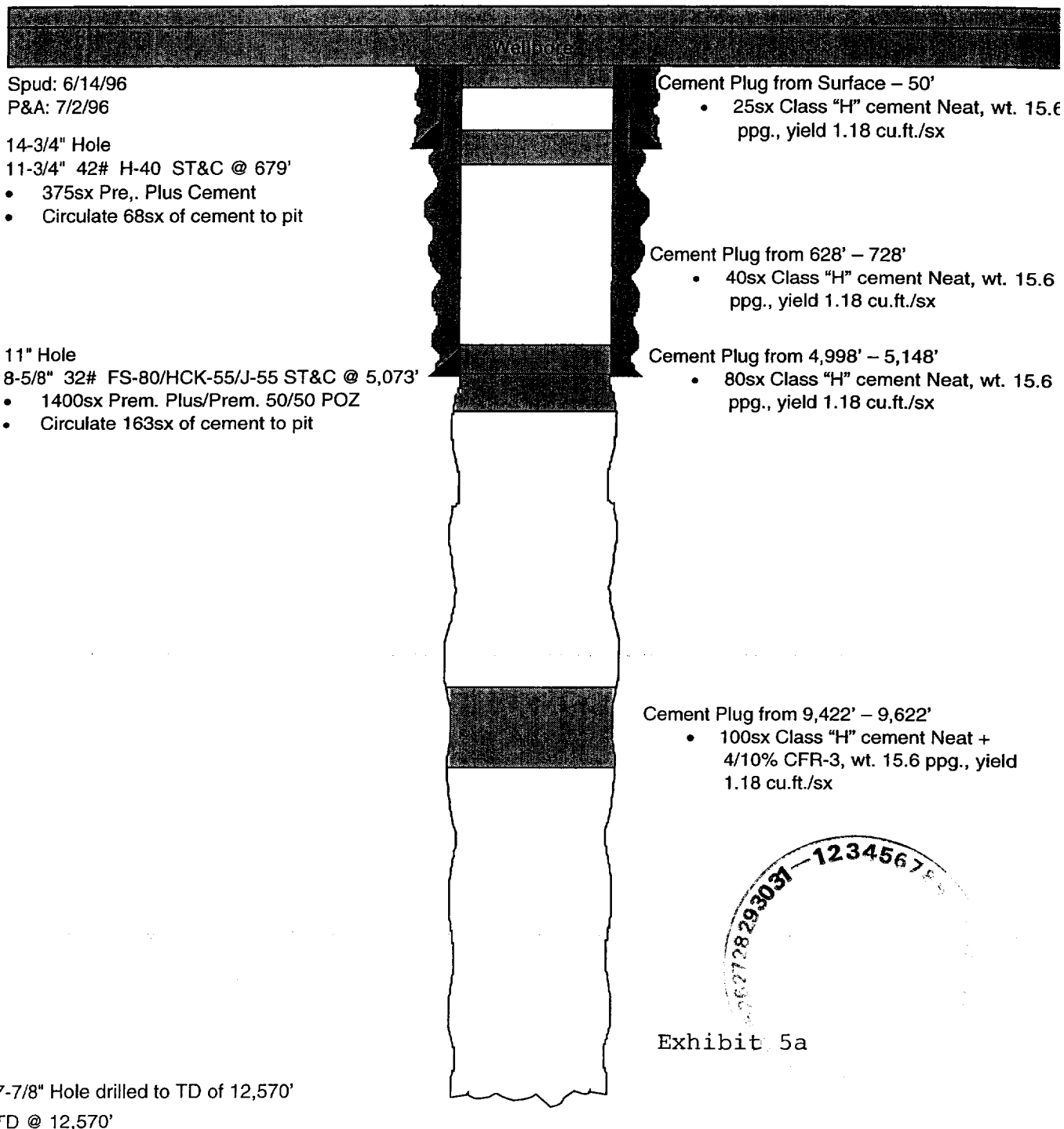
Survey Date: 3-7-95	Date: 3-14-95	Scale: 1" = 1000'
WTC No. 44038	Drawn By: R.S.	Sheet 2 of 2



EOG RESOURCES, INC.  
1,980' FNL & 510' FWL  
Sec.8-T25S-R34E

RHNU NO.  
LEA CO., NEW MEX  
DECEMBER 14, 20

**CURRENT  
WELLBORE SCHEMATIC**

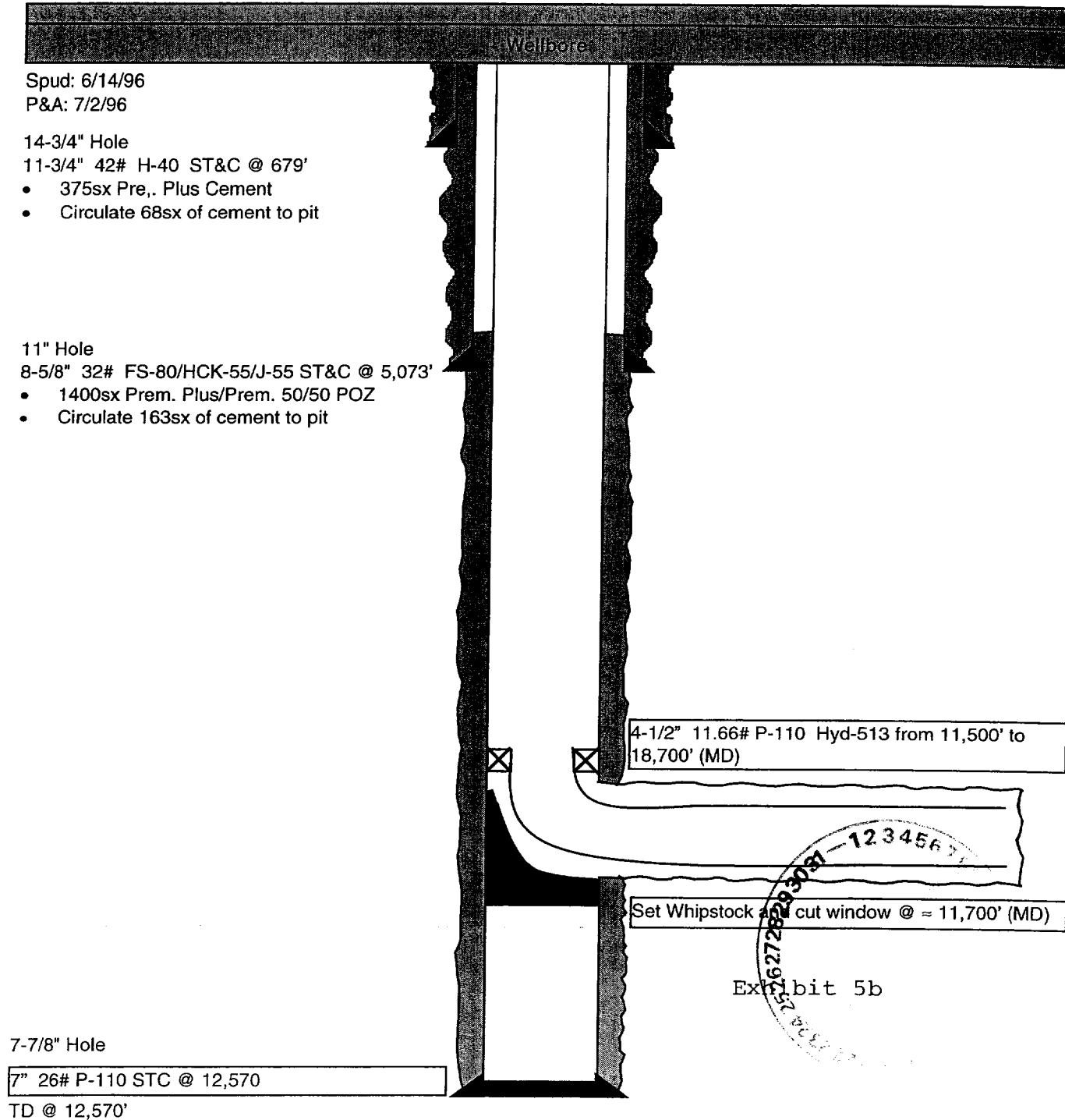


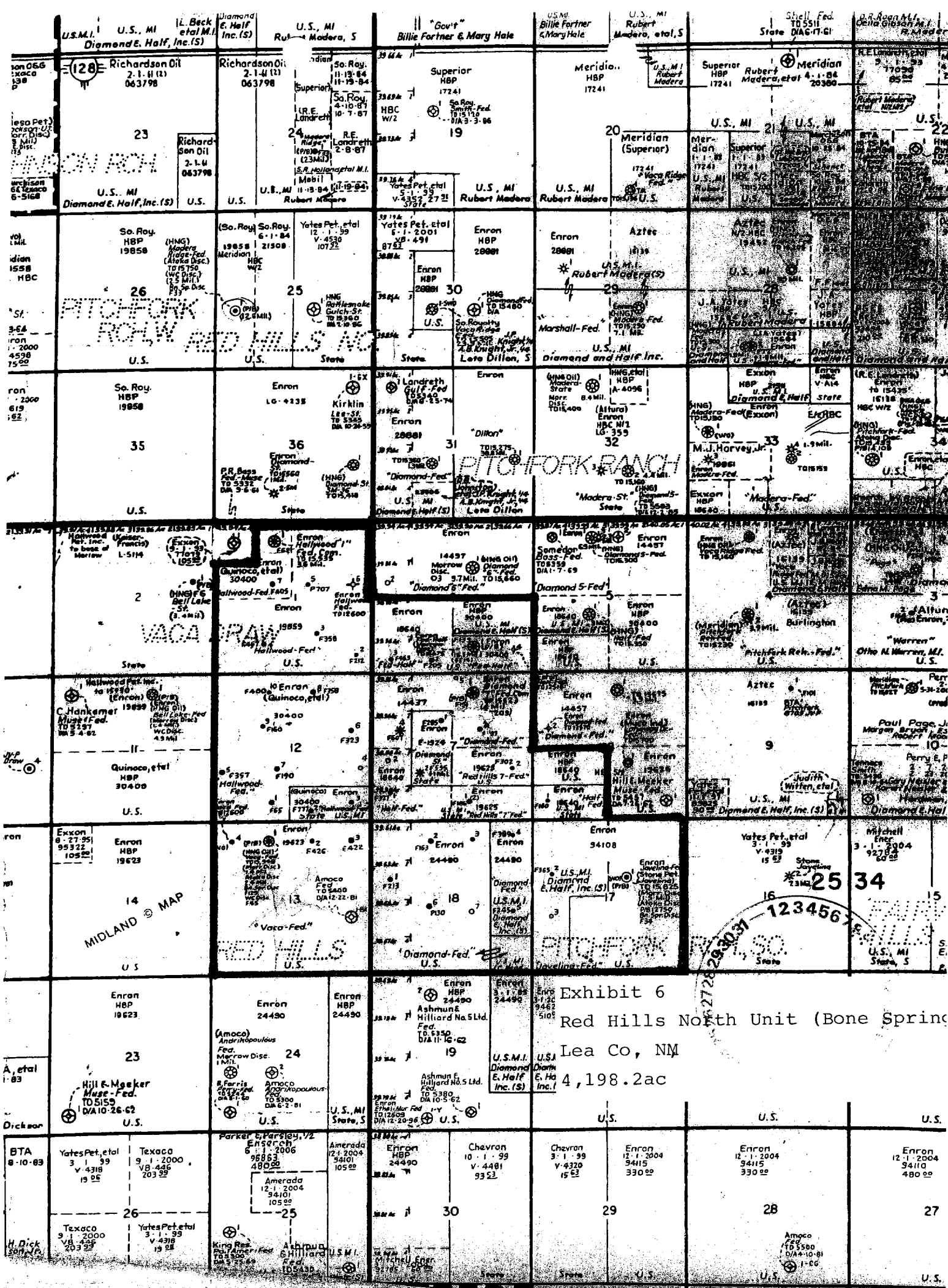


EOG RESOURCES, INC.  
1,980' FNL & 510' FWL  
Sec.8-T25S-R34E

RHNU NO.  
LEA CO., NEW MEXI  
DECEMBER 17, 20

PROPOSED  
WELLBORE SCHEMATIC





### Statement Accepting Responsibility For Operations

**Operator Name:** EOG Resources, Inc.  
**Street or Box:** P.O. Box 2267  
**City, State:** Midland, TX  
**Zip Code:** 79702

The undersigned accepts all applicable terms, conditions, stipulations, and restrictions concerning operations conducted on the leased land or portion thereof, as described below:

**Lease No.:** NM14497

**Legal Description of Land:** N/2 Section 8, T25S, R34E, NMPM  
Lea Co., NM

**Formation(s) (if applicable):**

**Bond Coverage:** *(State if individually bonded or another's bond)* Individually

**BLM Bond File No.:** NM2308 with endorsement to State of NM

**Authorized Signature:** Mike Francis

Mike Francis

**Title:** Agent

**Date:** 12/20/01

