

DATE	SUSPENSE	ENGINEER	LOGGED IN	TYPE	APP NO
------	----------	----------	-----------	------	--------

ABOVE THIS LINE FOR DIVISION USE ONLY

# NEW MEXICO OIL CONSERVATION DIVISION

- Engineering Bureau -

1220 South St. Francis Drive, Santa Fe, NM 87505



## ADMINISTRATIVE APPLICATION CHECKLIST

THIS CHECKLIST IS MANDATORY FOR ALL ADMINISTRATIVE APPLICATIONS FOR EXCEPTIONS TO DIVISION RULES AND REGULATIONS WHICH REQUIRE PROCESSING AT THE DIVISION LEVEL IN SANTA FE

### Application Acronyms:

[NSL-Non-Standard Location] [NSP-Non-Standard Proration Unit] [SD-Simultaneous Dedication]  
 [DHC-Downhole Commingling] [CTB-Lease Commingling] [PLC-Pool/Lease Commingling]  
 [PC-Pool Commingling] [OLS - Off-Lease Storage] [OLM-Off-Lease Measurement]  
 [WFX-Waterflood Expansion] [PMX-Pressure Maintenance Expansion]  
 [SWD-Salt Water Disposal] [IPI-Injection Pressure Increase]  
 [EOR-Qualified Enhanced Oil Recovery Certification] [PPR-Positive Production Response]

### [1] TYPE OF APPLICATION - Check Those Which Apply for [A]

[A] Location - Spacing Unit - Simultaneous Dedication  
☐ NSL ☐ NSP ☒ SD

Check One Only for [B] or [C]

[B] Commingling - Storage - Measurement  
☐ DHC ☐ CTB ☐ PLC ☐ PC ☐ OLS ☐ OLM

[C] Injection - Disposal - Pressure Increase - Enhanced Oil Recovery  
☐ WFX ☐ PMX ☐ SWD ☐ IPI ☐ EOR ☐ PPR

[D] Other: Specify \_\_\_\_\_

### [2] NOTIFICATION REQUIRED TO: - Check Those Which Apply, or Does Not Apply

[A] ☐ Working, Royalty or Overriding Royalty Interest Owners  
 [B] ☐ Offset Operators, Leaseholders or Surface Owner  
 [C] ☐ Application is One Which Requires Published Legal Notice  
 [D] ☐ Notification and/or Concurrent Approval by BLM or SLO  
U.S. Bureau of Land Management - Commissioner of Public Lands, State Land Office  
 [E] ☐ For all of the above, Proof of Notification or Publication is Attached, and/or,  
 [F] ☐ Waivers are Attached

### [3] SUBMIT ACCURATE AND COMPLETE INFORMATION REQUIRED TO PROCESS THE TYPE OF APPLICATION INDICATED ABOVE.

[4] CERTIFICATION: I hereby certify that the information submitted with this application for administrative approval is accurate and complete to the best of my knowledge. I also understand that no action will be taken on this application until the required information and notifications are submitted to the Division.

Note: Statement must be completed by an individual with managerial and/or supervisory capacity.

J. Denise Leake *J. Denise Leake* Engr. ASST. 6-13-02  
 Print or Type Name Signature Title Date  
 LeakeJD@chevrontexasco.com  
 e-mail Address

June 13, 2001

NEW MEXICO OIL CONSERVATION DIVISION  
Engineering Bureau  
1220 South St. Francis Drive  
Santa Fe, NM 87505  
ATTENTION: Mr. Michael Stogner

RE **APPLICATION FOR SIMULTANEOUS DEDICATION  
AND FORMATION OF PROJECT AREA**

Dear Sirs,

Texaco respectfully seeks approval for simultaneous dedication of G. L. Erwin "A" Federal Well Number 7, API #30-025-33138, in Lea County, New Mexico, with G.L. Erwin "A" Federal Well #3 & #6.

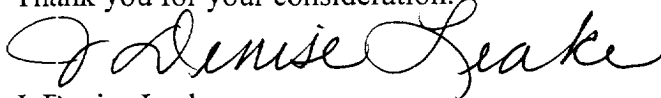
The #7 well is a horizontal lateral in the Blinebry and Drinkard formations. These re-entries were both from the same wellbore and followed the same directional path, but the kickoff points were at different depths. The directional survey indicates that these re-entries are at standard locations.

Plats (Form C-102) are included showing the locations of wells #3 & #6, & #7.

Each horizontal covers two 40 acre proration units (#7 well, and the proration unit due east). Dedicated acreage is 80 acres (project area is S/2 of the SW ¼ section of Section 35).

If you have any further questions, please contact me at (915) 687-7375.

Thank you for your consideration.



J. Denise Leake  
Regulatory and Permit Specialist  
ChevronTexaco  
15 Smith Road  
Midland, TX 79705  
E-mail: [leakejd@chevrontexaco.com](mailto:leakejd@chevrontexaco.com) fax: (915) 687-7721



DISTRICT I

P.O. Box 1980, Hobbs, NM 88241-1980

DISTRICT II

P.O. Box Drawer DD, Artesia, NM 88211-0719

DISTRICT III

1000 Rio Brazos Rd., Aztec, NM 87410

DISTRICT IV

P.O. Box 2088, Santa Fe, NM 87504-2088

State of New Mexico  
Energy, Minerals and Natural Resources Department**OIL CONSERVATION DIVISION**P.O. Box 2088  
Santa Fe, New Mexico 87504-2088

Form C-102

Revised February 10, 1999

Instructions on back

Submit to Appropriate District Office

State Lease - 4 Copies

Fee Lease - 3 Copies

☐ AMENDED REPORT**WELL LOCATION AND ACREAGE DEDICATION PLAT**

<sup>1</sup> API Number 30-025-33138	<sup>2</sup> Pool Code 34200	<sup>3</sup> Pool Name JUSTIS BLINEBRY
<sup>4</sup> Property Code 010929	<sup>5</sup> Property Name G. L. ERWIN 'A' FEDERAL	
<sup>7</sup> OGRID Number 022351	<sup>8</sup> Operator Name TEXACO EXPLORATION & PRODUCTION INC.	<sup>6</sup> Well No. 7 <sup>9</sup> Elevation GR-3183'

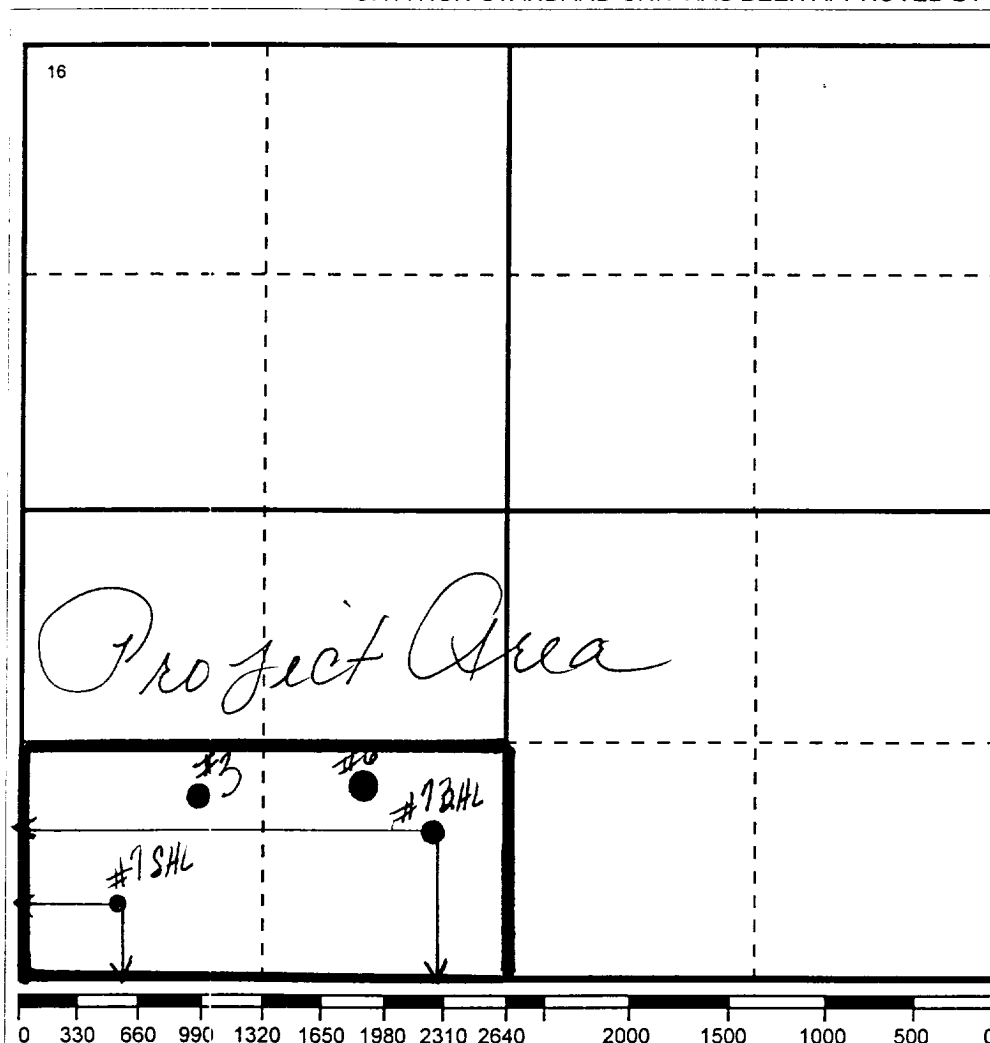
<sup>10</sup> Surface Location

Ul or lot no	Section	Township	Range	Lot.Idn	Feet From The	North/South Line	Feet From The	East/West Line	County
M	35	24-S	37-E		330	SOUTH	500	WEST	LEA

<sup>11</sup> Bottom Hole Location If Different From Surface

Ul or lot no.	Section	Township	Range	Lot.Idn	Feet From The	North/South Line	Feet From The	East/West Line	County
N	35	24-S	37-E		700'	SOUTH	2285'	WEST	LEA

<sup>12</sup> Dedicated Acre 80	<sup>13</sup> Joint or Infill No	<sup>14</sup> Consolidation Code	<sup>15</sup> Order No.
------------------------------------	-------------------------------------	----------------------------------	-------------------------

NO ALLOWABLE WILL BE ASSIGNED TO THIS COMPLETION UNTIL ALL INTERESTS HAVE BEEN CONSOLIDATED  
OR A NON-STANDARD UNIT HAS BEEN APPROVED BY THE DIVISION<sup>17</sup> OPERATOR CERTIFICATIONI hereby certify that the information  
contained herein is true and complete to the  
best of my knowledge and belief

Signature

Printed Name

J. Denise Leake

Position

Regulatory Specialist

Date

6/13/2002

<sup>18</sup> SURVEYOR CERTIFICATIONI hereby certify that the well location shown  
on this plat was plotted from field notes of  
actual surveys made by me or under my  
supervision, and that the same is true and  
correct to the best of my knowledge and  
belief.

Date Surveyed

Signature & Seal of  
Professional Surveyor

Certificate No.

## DISTRICT I

P.O. Box 1980, Hobbs, NM 88241-1980

## DISTRICT II

P.O. Box Drawer DD, Artesia, NM 88211-0719

## DISTRICT III

1000 Rio Brazos Rd., Aztec, NM 87410

## DISTRICT IV

P.O. Box 2088, Santa Fe, NM 87504-2088

State of New Mexico  
Energy, Minerals and Natural Resources Department

## OIL CONSERVATION DIVISION

P.O. Box 2088

Santa Fe, New Mexico 87504-2088

Form C-102

Revised February 10, 1999

Instructions on back

Submit to Appropriate District Office

State Lease - 4 Copies

Fee Lease - 3 Copies

☐ AMENDED REPORT

## WELL LOCATION AND ACREAGE DEDICATION PLAT

<sup>1</sup> API Number 30-025-33138	<sup>2</sup> Pool Code 35280	<sup>3</sup> Pool Name JUSTIS TUBB DRINKARD
<sup>4</sup> Property Code 010629	<sup>5</sup> Property Name G. L. ERWIN 'A' FEDERAL	<sup>6</sup> Well No. 7
<sup>7</sup> OGRID Number 022351	<sup>8</sup> Operator Name TEXACO EXPLORATION & PRODUCTION INC.	<sup>9</sup> Elevation GL- 3183'

<sup>10</sup> Surface Location

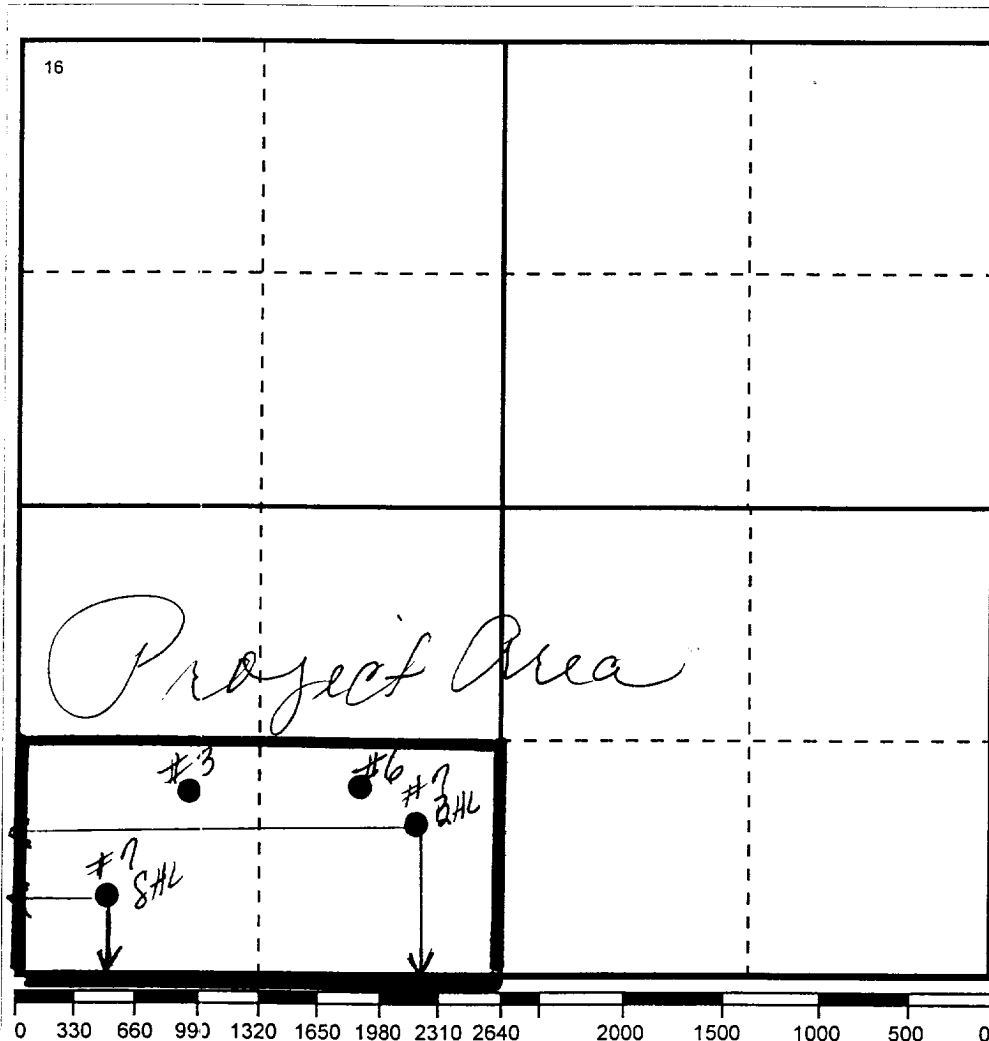
UI or lot no	Section	Township	Range	Lot.Idn	Feet From The	North/South Line	Feet From The	East/West Line	County
M	35	24S	37E		330	SOUTH	500	WEST	Lea County

<sup>11</sup> Bottom Hole Location If Different From Surface

UI or lot no.	Section	Township	Range	Lot.Idn	Feet From The	North/South Line	Feet From The	East/West Line	County
N	35	24-S	37-E		700'	SOUTH	2285'	WEST	LEA

<sup>12</sup> Dedicated Acre 80	<sup>13</sup> Joint or Infill No	<sup>14</sup> Consolidation Code	<sup>15</sup> Order No.
------------------------------------	-------------------------------------	----------------------------------	-------------------------

NO ALLOWABLE WILL BE ASSIGNED TO THIS COMPLETION UNTIL ALL INTERESTS HAVE BEEN CONSOLIDATED  
OR A NON-STANDARD UNIT HAS BEEN APPROVED BY THE DIVISION

<sup>17</sup> OPERATOR CERTIFICATION

I hereby certify that the information contained herein is true and complete to the best of my knowledge and belief

Signature

Printed Name

J. Denise Leake

Position

Regulatory Specialist

Date

6/13/2002

<sup>18</sup> SURVEYOR CERTIFICATION

I hereby certify that the well location shown on this plat was plotted from field notes of actual surveys made by me or under my supervision, and that the same is true and correct to the best of my knowledge and belief.

Date Surveyed

Signature & Seal of  
Professional Surveyor

Certificate No.

**DISTRICT I**

P.O. Box 1980, Hobbs, NM 88241-1980

**DISTRICT II**

P.O. Box Drawer DD, Artesia, NM 88211-0719

**DISTRICT III**

1000 Rio Brazos Rd., Aztec, NM 87410

**DISTRICT IV**

P.O. Box 2088, Santa Fe, NM 87504-2088

State of New Mexico  
Energy, Minerals and Natural Resources Department**OIL CONSERVATION DIVISION**

P.O. Box 2088

Santa Fe, New Mexico 87504-2088

Form C-102

Revised February 10, 199

Instructions on back  
Submit to Appropriate District Office

State Lease - 4 Copies

Fee Lease - 3 Copies

☐ AMENDED REPORT**WELL LOCATION AND ACREAGE DEDICATION PLAT**

<sup>1</sup> API Number 30 025 20558	<sup>2</sup> Pool Code 34200	<sup>3</sup> Pool Name JUSTIS BLINEBRY
<sup>4</sup> Property Code 10929	<sup>5</sup> Property Name ERWIN, G. L. -A- FEDERAL	
<sup>7</sup> OGRID Number 022351	<sup>8</sup> Operator Name TEXACO EXPLORATION & PRODUCTION INC.	<sup>6</sup> Well No. 3
		<sup>9</sup> Elevation 3196'

<sup>10</sup> Surface Location

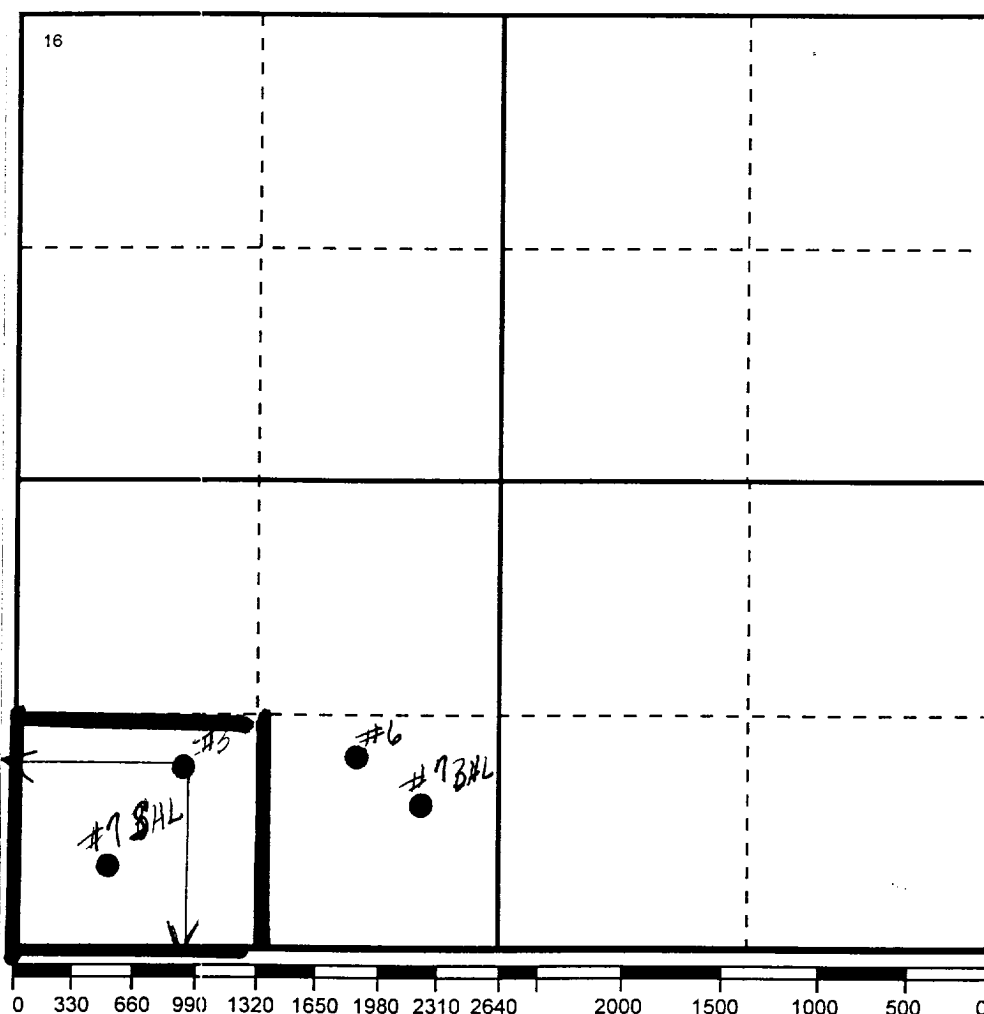
UI or lot no	Section	Township	Range	Lot.Idn	Feet From The	North/South Line	Feet From The	East/West Line	County
M	35	24S	37E		990	SOUTH	990	WEST	LEA

<sup>11</sup> Bottom Hole Location If Different From Surface

UI or lot no.	Section	Township	Range	Lot.Idn	Feet From The	North/South Line	Feet From The	East/West Line	County

<sup>12</sup> Dedicated Acre 40	<sup>13</sup> Joint or Infill No	<sup>14</sup> Consolidation Code	<sup>15</sup> Order No.
------------------------------------	-------------------------------------	----------------------------------	-------------------------

NO ALLOWABLE WILL BE ASSIGNED TO THIS COMPLETION UNTIL ALL INTERESTS HAVE BEEN CONSOLIDATED  
OR A NON-STANDARD UNIT HAS BEEN APPROVED BY THE DIVISION

**17 OPERATOR CERTIFICATION**

I hereby certify that the information  
contained herein is true and complete to the  
best of my knowledge and belief

Signature

Printed Name

J. Denise Leake

Position

Regulatory Specialist

Date

6/13/2002

**18 SURVEYOR CERTIFICATION**

I hereby certify that the well location shown  
on this plat was plotted from field notes of  
actual surveys made by me or under my  
supervision, and that the same is true and  
correct to the best of my knowledge and  
belief.

Date Surveyed

Signature & Seal of  
Professional Surveyor

Certificate No.

**DISTRICT I**

P.O. Box 1980, Hobbs, NM 88241-1980

**DISTRICT II**

P.O. Box Drawer DD, Artesia, NM 88211-0719

**DISTRICT III**

1000 Rio Brazos Rd., Aztec, NM 87410

**DISTRICT IV**

P.O. Box 2088, Santa Fe, NM 87504-2088

State of New Mexico

Energy, Minerals and Natural Resources Department

Form C-102

Revised February 10, 1999

Instructions on back

Submit to Appropriate District Office

State Lease - 4 Copies

Fee Lease - 3 Copies

☐ AMENDED REPORT**OIL CONSERVATION DIVISION**

P.O. Box 2088

Santa Fe, New Mexico 87504-2088

**WELL LOCATION AND ACREAGE DEDICATION PLAT**

<sup>1</sup> API Number 30 025 32948	<sup>2</sup> Pool Code 34200	<sup>3</sup> Pool Name JUSTIS BLINEBRY
<sup>4</sup> Property Code 10929	<sup>5</sup> Property Name G. L. ERWIN 'A' FEDERAL	<sup>6</sup> Well No. 6
<sup>7</sup> OGRID Number 022351	<sup>8</sup> Operator Name TEXACO EXPLORATION & PRODUCTION INC.	<sup>9</sup> Elevation GL - 3180', KB-3195'

<sup>10</sup> Surface Location

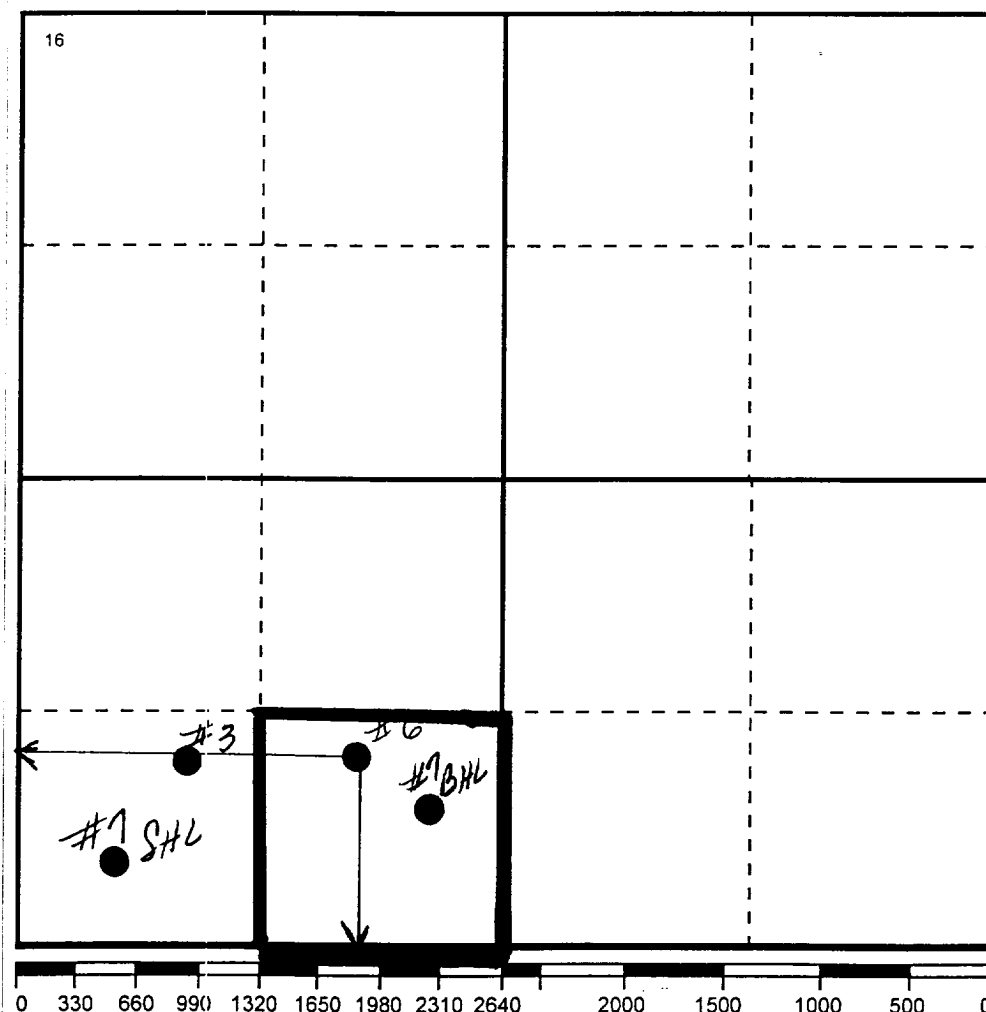
Ul or lot no. N	Section 35	Township 24-S	Range 37-E	Lot.Idn	Feet From The 990	North/South Line SOUTH	Feet From The 1825	East/West Line WEST	County LEA
--------------------	---------------	------------------	---------------	---------	----------------------	---------------------------	-----------------------	------------------------	---------------

<sup>11</sup> Bottom Hole Location If Different From Surface

Ul or lot no.	Section	Township	Range	Lot.Idn	Feet From The	North/South Line	Feet From The	East/West Line	County
---------------	---------	----------	-------	---------	---------------	------------------	---------------	----------------	--------

<sup>12</sup> Dedicated Acre 40	<sup>13</sup> Joint or Infill No	<sup>14</sup> Consolidation Code	<sup>15</sup> Order No.
------------------------------------	-------------------------------------	----------------------------------	-------------------------

NO ALLOWABLE WILL BE ASSIGNED TO THIS COMPLETION UNTIL ALL INTERESTS HAVE BEEN CONSOLIDATED  
OR A NON-STANDARD UNIT HAS BEEN APPROVED BY THE DIVISION

**17 OPERATOR CERTIFICATION**

I hereby certify that the information contained herein is true and complete to the best of my knowledge and belief

Signature

Printed Name

J. Denise Leake

Position

Regulatory Specialist

Date

6/13/2002

**18 SURVEYOR CERTIFICATION**

I hereby certify that the well location shown on this plat was plotted from field notes of actual surveys made by me or under my supervision, and that the same is true and correct to the best of my knowledge and belief.

Date Surveyed

Signature & Seal of  
Professional Surveyor

Certificate No.

**DISTRICT I**

P.O. Box 1980, Hobbs, NM 88241-1980

**DISTRICT II**

P.O. Box Drawer DD, Artesia, NM 88211-0719

**DISTRICT III**

1000 Rio Brazos Rd., Aztec, NM 87410

**DISTRICT IV**

P.O. Box 2088, Santa Fe, NM 87504-2088

State of New Mexico

Energy, Minerals and Natural Resources Department

Form C-102

Revised February 10, 1999

Instructions on back

Submit to Appropriate District Office

State Lease - 4 Copies

Fee Lease - 3 Copies

☐ AMENDED REPORT**OIL CONSERVATION DIVISION**

P.O. Box 2088

Santa Fe, New Mexico 87504-2088

**WELL LOCATION AND ACREAGE DEDICATION PLAT**

<sup>1</sup> API Number 30 025 32948	<sup>2</sup> Pool Code 35280	<sup>3</sup> Pool Name JUSTIS TUBB DRINKARD
<sup>4</sup> Property Code 10929	<sup>5</sup> Property Name G. L. ERWIN 'A' FEDERAL	<sup>6</sup> Well No. 6
<sup>7</sup> OGRID Number 022351	<sup>8</sup> Operator Name TEXACO EXPLORATION & PRODUCTION INC.	<sup>9</sup> Elevation GL - 3180', KB-3195'

<sup>10</sup> Surface Location

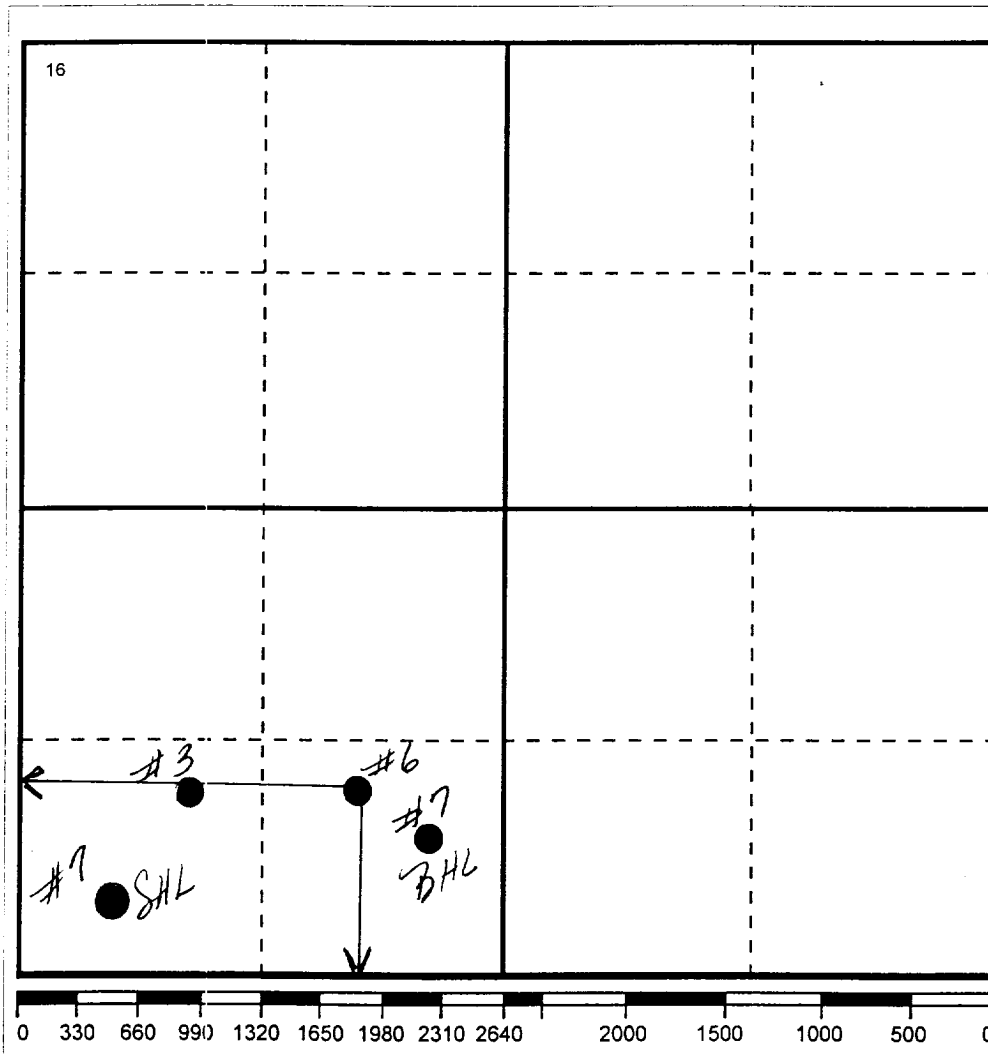
UI or lot no	Section	Township	Range	Lot.Idn	Feet From The	North/South Line	Feet From The	East/West Line	County
N	35	24-S	37-E		990	SOUTH	1825	WEST	LEA

<sup>11</sup> Bottom Hole Location If Different From Surface

UI or lot no.	Section	Township	Range	Lot.Idn	Feet From The	North/South Line	Feet From The	East/West Line	County

<sup>12</sup> Dedicated Acre 40	<sup>13</sup> Joint or Infill No	<sup>14</sup> Consolidation Code	<sup>15</sup> Order No.
------------------------------------	-------------------------------------	----------------------------------	-------------------------

NO ALLOWABLE WILL BE ASSIGNED TO THIS COMPLETION UNTIL ALL INTERESTS HAVE BEEN CONSOLIDATED  
OR A NON-STANDARD UNIT HAS BEEN APPROVED BY THE DIVISION

**17 OPERATOR CERTIFICATION**

I hereby certify that the information contained herein is true and complete to the best of my knowledge and belief

Signature

*J. Denise Leake*

Printed Name

J. Denise Leake

Position

Regulatory Specialist

Date

6/13/2002

**18 SURVEYOR CERTIFICATION**

I hereby certify that the well location shown on this plat was plotted from field notes of actual surveys made by me or under my supervision, and that the same is true and correct to the best of my knowledge and belief.

Date Surveyed

Signature &amp; Seal of Professional Surveyor

Certificate No.

DATE IN	SUSPENSE	ENGINEER	LOGGED IN	TYPE	APP NO.
---------	----------	----------	-----------	------	---------

ABOVE THIS LINE FOR DIVISION USE ONLY

## NEW MEXICO OIL CONSERVATION DIVISION

- Engineering Bureau -

1220 South St. Francis Drive, Santa Fe, NM 87505



### ADMINISTRATIVE APPLICATION CHECKLIST

THIS CHECKLIST IS MANDATORY FOR ALL ADMINISTRATIVE APPLICATIONS FOR EXCEPTIONS TO DIVISION RULES AND REGULATIONS WHICH REQUIRE PROCESSING AT THE DIVISION LEVEL IN SANTA FE

#### Application Acronyms:

[NSL-Non-Standard Location] [NSP-Non-Standard Proration Unit] [SD-Simultaneous Dedication]  
 [DHC-Downhole Commingling] [CTB-Lease Commingling] [PLC-Pool/Lease Commingling]  
 [PC-Pool Commingling] [OLS - Off-Lease Storage] [OLM-Off-Lease Measurement]  
 [WFX-Waterflood Expansion] [PMX-Pressure Maintenance Expansion]  
 [SWD-Salt Water Disposal] [IPI-Injection Pressure Increase]  
 [EOR-Qualified Enhanced Oil Recovery Certification] [PPR-Positive Production Response]

#### [1] TYPE OF APPLICATION - Check Those Which Apply for [A]

- [A] Location - Spacing Unit - Simultaneous Dedication  
☐ NSL ☐ NSP ☐ SD

Check One Only for [B] or [C]

- [B] Commingling - Storage - Measurement  
☐ DHC ☐ CTB ☐ PLC ☐ PC ☐ OLS ☐ OLM

- [C] Injection - Disposal - Pressure Increase - Enhanced Oil Recovery  
☐ WFX ☐ PMX ☐ SWD ☐ IPI ☐ EOR ☐ PPR

- [D] Other: Specify Request from Mike Stogner

#### [2] NOTIFICATION REQUIRED TO: - Check Those Which Apply, or Does Not Apply

- [A] ☐ Working, Royalty or Overriding Royalty Interest Owners  
 [B] ☐ Offset Operators, Leaseholders or Surface Owner  
 [C] ☐ Application is One Which Requires Published Legal Notice  
 [D] ☐ Notification and/or Concurrent Approval by BLM or SLO  
U.S. Bureau of Land Management - Commissioner of Public Lands, State Land Office  
 [E] ☐ For all of the above, Proof of Notification or Publication is Attached, and/or,  
 [F] ☐ Waivers are Attached

#### [3] SUBMIT ACCURATE AND COMPLETE INFORMATION REQUIRED TO PROCESS THE TYPE OF APPLICATION INDICATED ABOVE.

[4] **CERTIFICATION:** I hereby certify that the information submitted with this application for administrative approval is **accurate** and **complete** to the best of my knowledge. I also understand that **no action** will be taken on this application until the required information and notifications are submitted to the Division.

Note: Statement must be completed by an individual with managerial and/or supervisory capacity.

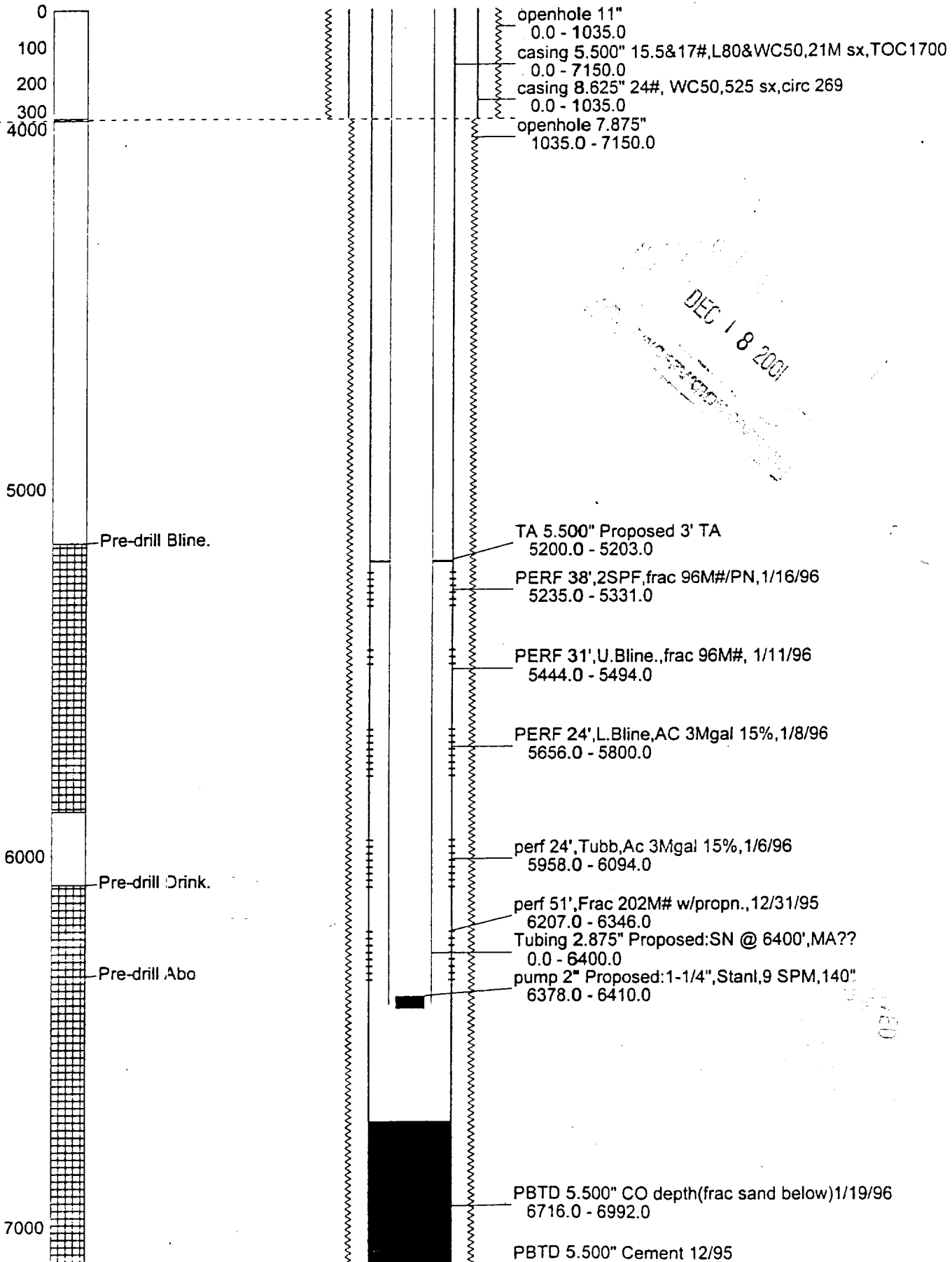
Denise Leake Denise Leake Reg. Specialist 12-10-01  
 Print or Type Name Signature Title Date

e-mail Address



Erwin "A" #7  
Not Pumping-(4/29/98)

Name: EA\_7 ID: 30025331380000 Type: Bli/Drk Date: 19980429  
KB: 0.0 TD: 0.0 PBD: 0.0 Comp Date: 0



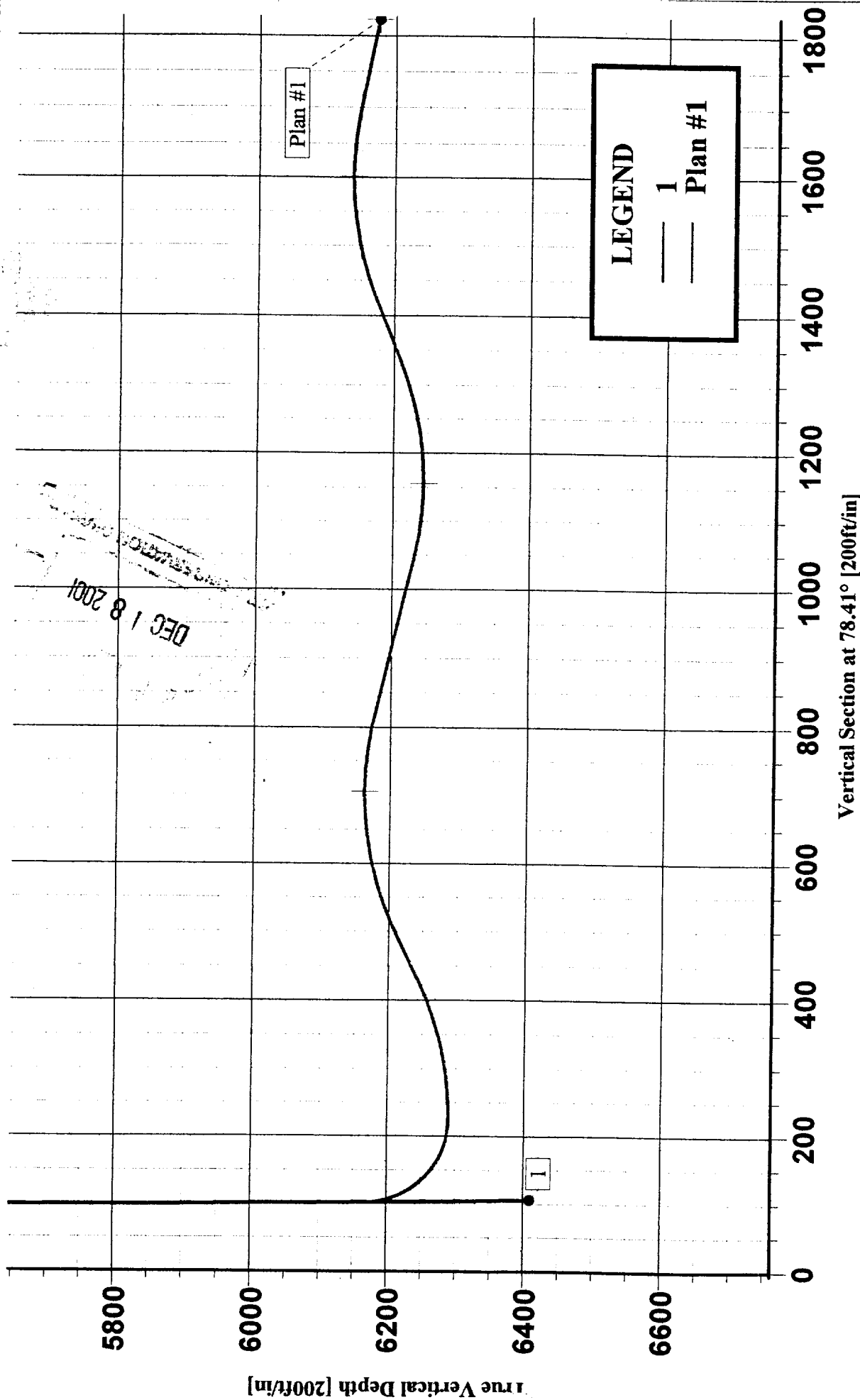


Scientific Drilling

ChevronTexaco

Field: North Justis  
Site: Lea County, New Mexico  
Well: G. L. Erwin "A #7 DRKD  
Plan: Plan #1

ChevronTexaco





Scientific Drilling

ChevronTexaco

Field: North Justis  
Site: Lea County, New Mexico  
Well: G. L. Erwin "A" #7 6L6R  
Plan: Plan #1

ChevronTexaco

