

DISTRICT I  
P. O. Box 1980, Hobbs, NM 88240

DISTRICT II  
P. O. Drawer DD, Artesia, NM 88210

DISTRICT III  
1000 Rio Brazos Rd., Aztec, NM 87410

DISTRICT IV  
P. O. Box 2088, Santa Fe, NM 87504-2088

State of New Mexico  
Energy, Minerals and Natural Resources Department

OIL CONSERVATION DIVISION

PO Box 2088  
Santa Fe, NM 87504-2088

Form C-102  
Revised February 10, 1994

Instructions on back

Submit to Appropriate District Office

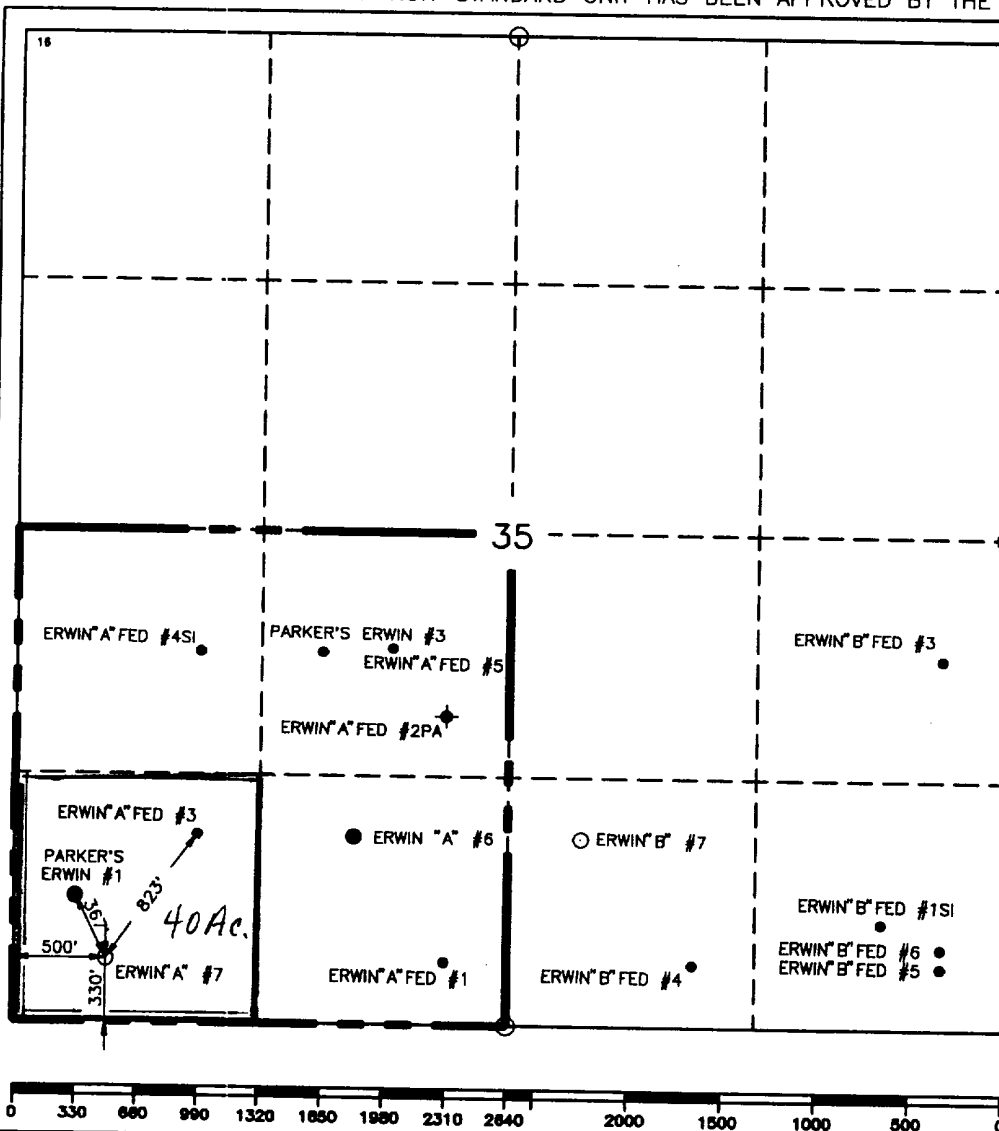
State Lease-4 copies  
Fee Lease-3 copies

WELL LOCATION AND ACREAGE DEDICATION PLAT

☐ AMENDED REPORT

<sup>1</sup> API Number 30-025-33138		<sup>2</sup> Pool Code 34200/35280		<sup>3</sup> Pool Name Justis Blinebry; Justis Tubb Drinkard					
<sup>4</sup> Property Code 10929		<sup>5</sup> Property Name G.L. Erwin "A" Federal			<sup>6</sup> Well Number 7				
<sup>7</sup> GRID No. 22351		<sup>8</sup> Operator Name TEXACO EXPLORATION & PRODUCTION, INC.			<sup>9</sup> Elevation 3183'				
<sup>10</sup> Surface Location									
UL or lot no. M	Section 35	Township 24-S	Range 37-E	Lot Idn	Feet from the 330'	North/South line South	Feet from the 500'	East/West line West	<sup>7</sup> County Lea
<sup>11</sup> Bottom Hole Location If Different From Surface									
UL or lot no.	Section	Township	Range	Lot Idn	Feet from the	North/South line	Feet from the	East/West line	<sup>7</sup> County
<sup>12</sup> Dedicated Acres 40		<sup>13</sup> Joint or Infill		<sup>14</sup> Consolidation Code		<sup>15</sup> Order No.			

NO ALLOWABLE WILL BE ASSIGNED TO THIS COMPLETION UNTIL ALL INTERESTS HAVE BEEN CONSOLIDATED  
OR A NON-STANDARD UNIT HAS BEEN APPROVED BY THE DIVISION.



<sup>16</sup> OPERATOR CERTIFICATION	
I hereby certify that the information contained herein is true and complete to the best of my knowledge and belief.	
Signature <i>C. Wade Howard</i>	
Printed Name C. Wade Howard	
Position Engineer's Assistant	
Company Texaco Expl. & Prod. Inc.	
Date August 30, 1995	
<sup>17</sup> SURVEYOR CERTIFICATION	
I hereby certify that the well location shown on this plat was plotted from field notes of actual surveys made by me or under my supervision, and that the same is true and correct to the best of my knowledge and belief.	
Date Surveyed August 10, 1995	
Signature & Seal of Professional Surveyor <i>John S. Piper</i>	
Certificate No. 7254 John S. Piper	
Sheet Sheet 8 of 8	

○ = Staked Location ● = Producing Well ● = Injection Well ○ = Water Supply Well ▲ = Plugged & Abandoned Well



## DRILLING PROGRAM

G. L. ERWIN 'A' FEDERAL WELL No. 7

### **SURFACE DESCRIPTION:**

See Item 11 (other information) in the attached Surface Use and Operations Plan.

**FORMATION TOPS:** Estimated KB Elevation: 3193'

<u>Formation</u>	<u>Depth</u>	<u>Lithology</u>	<u>Fluid Content</u>
Rustler	975'	Anhy, Salt	----
Tansill	2270'	Anhy, Dolo	----
Yates	2500'	Sandstone, Anhy	----
Queen	3160'	Sandstone, Anhy	----
Blinebry	5150'	Dolomite, Anhy	Oil
Drinkard	6080'	Dolomite, Anhy	Oil
Abo	6325'	Dolo, Limestone	Oil
Devonian	7050'	Dolomite	Oil

The base of the salt section is the top of the Tansill at 2270'. No abnormal pressures or temperatures are anticipated to be encountered in this well. H2S is present in the Blinebry. H2S RADIUS OF EXPOSURE: 100ppm = 26', 500ppm = 12', based on 300ppm H2S and 380 MCF (see attached H2S Drilling Operations Plan. H2S equipment to be operational prior to drilling out Surface Casing Shoe.)

### **PRESSURE CONTROL EQUIPMENT:**

A 3000 psi Dual Ram type preventer with rotating head will be used. (See Exhibit C). We do not plan to have an annular preventer. We will be able to achieve full closure of the well with the double ram preventer. It will be installed after surface casing is set. BOP will be tested each time it is installed on a casing string and at least every 29 days, and operated at least once each 24-hour period during drilling.

A PVT system will not be installed. We will be drilling thru the reserve pit and will circulate the steel pits one hour each tour to check for gains and losses and will be noted on the driller's log, which is Texaco's policy.

We do not plan to run an automatic remote-controlled choke. We will have installed and tested two manual, H2S trimmed, chokes.



**CASING AND CEMENT PROGRAM:**

The casing and cementing programs are detailed on Form 3160-3. All casing will be new.

**Centralizer Program:**

Surface Casing - Centralize the bottom 3 joints and every 4th to surface.

Production Casing - Centralize every 3rd joint on bottom 2000'.

**MUD PROGRAM:**

<u>Depth</u>	<u>Type</u>	<u>Weight</u>	<u>Viscosity</u>
0'-1000'	Fresh Water	8.4	28
1000'-5000'	Brine	10.0	29
5000'-7150'	Brine/Starch	10.0	32-36

Bottom Hole Pressure at T.D. estimated to be 6.7 PPG EMW (918 psi).

**LOGGING, TESTING:**

GR-CNL-LDT, GR-DLL-MSFL, and GR-Sonic surveys will be run.

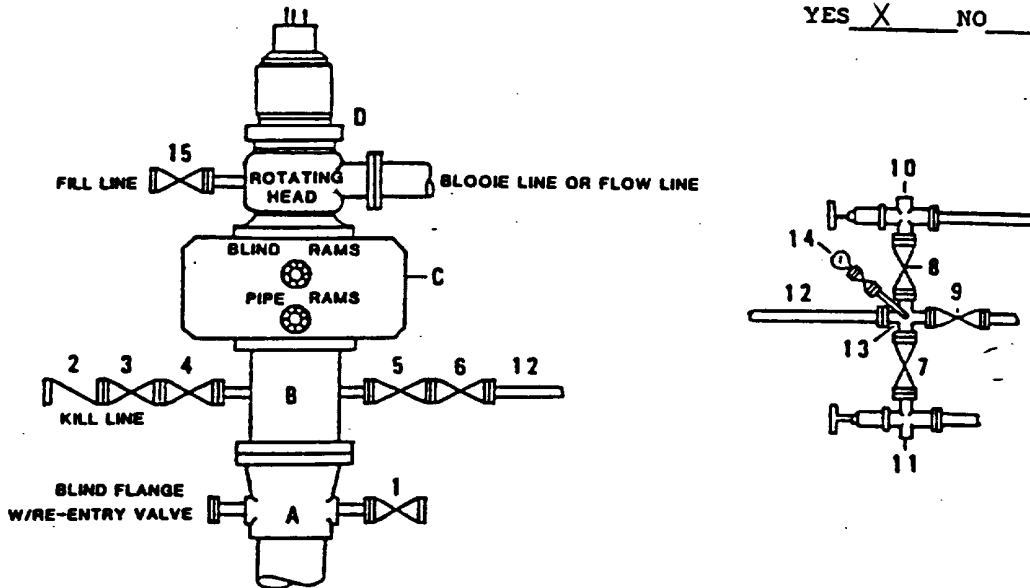
A two-man Mud Logging Unit will be used from 3300' to T.D.

No drill stem tests will be conducted.

No cores will be taken.

**DRILLING CONTROL  
CONDITION II-B 3000 WP  
FOR AIR DRILLING OR  
WHERE NITROGEN OR AIR BLOWS ARE EXPECTED**

H<sub>2</sub>S TRIM REQUIRED  
YES X NO     



**DRILLING CONTROL**

**MATERIAL LIST - CONDITION II - B**

- A        Texaco Wellhead
- B        3000# W.P. drilling spool with a 2" minimum flanged outlet for kill line and 3" minimum flanged outlet for choke line.
- C        3000# W.P. Dual ram type preventer, hydraulic operated with 1" steel, 3000# W.P. control lines (where sub-structure height is adequate, 2 - 3000# W.P. single ram type preventers may be utilized).
- D        Rotating Head with fill up outlet and extended Bloopie Line.
- 1,3,4, 7,8,    2" minimum 3000# W.P. flanged full opening steel gate valve, or Halliburton Lo Torc Plug valve.
- 2        2" minimum 3000# W.P. back pressure valve.
- 5,6,9    3" minimum 3000# W.P. flanged full opening steel gate valve, or Halliburton Lo Torc Plug valve.
- 12       3" minimum schedule 80, Grade "B", seamless line pipe.
- 13       2" minimum x 3" minimum 3000# W.P. flanged cross.
- 10,11    2" minimum 3000# W.P. adjustable choke bodies.
- 14       Cameron Mud Gauge or equivalent ( location optional in choke line).
- 15       2" minimum 3000# W.P. flanged or threaded full opening steel gate valve, or Halliburton Lo Torc Plug valve.



**TEXACO, INC.**  
MIDLAND DIVISION  
MIDLAND, TEXAS



SCALE	DATE	EST. NO.	DRG. NO.
DRAWN BY			
CHECKED BY			
APPROVED BY			

**EXHIBIT C**

9/16/96

