

DISTRICT I  
P. O. Box 1980, Hobbs, NM 88240

DISTRICT II  
P. O. Drawer DD, Artesia, NM 88210

DISTRICT III  
1000 Rio Brazos Rd., Aztec, NM 87410

DISTRICT IV  
P. O. Box 2088, Santa Fe, NM 87504-2088

State of New Mexico  
Energy, Minerals and Natural Resources Department

OIL CONSERVATION DIVISION

PO Box 2088  
Santa Fe, NM 87504-2088

Form C-102  
Revised February 10, 1994

Instructions on back

Submit to Appropriate District Office

State Lease-4 copies  
Fee Lease-3 copies

☐ AMENDED REPORT

WELL LOCATION AND ACREAGE DEDICATION PLAT

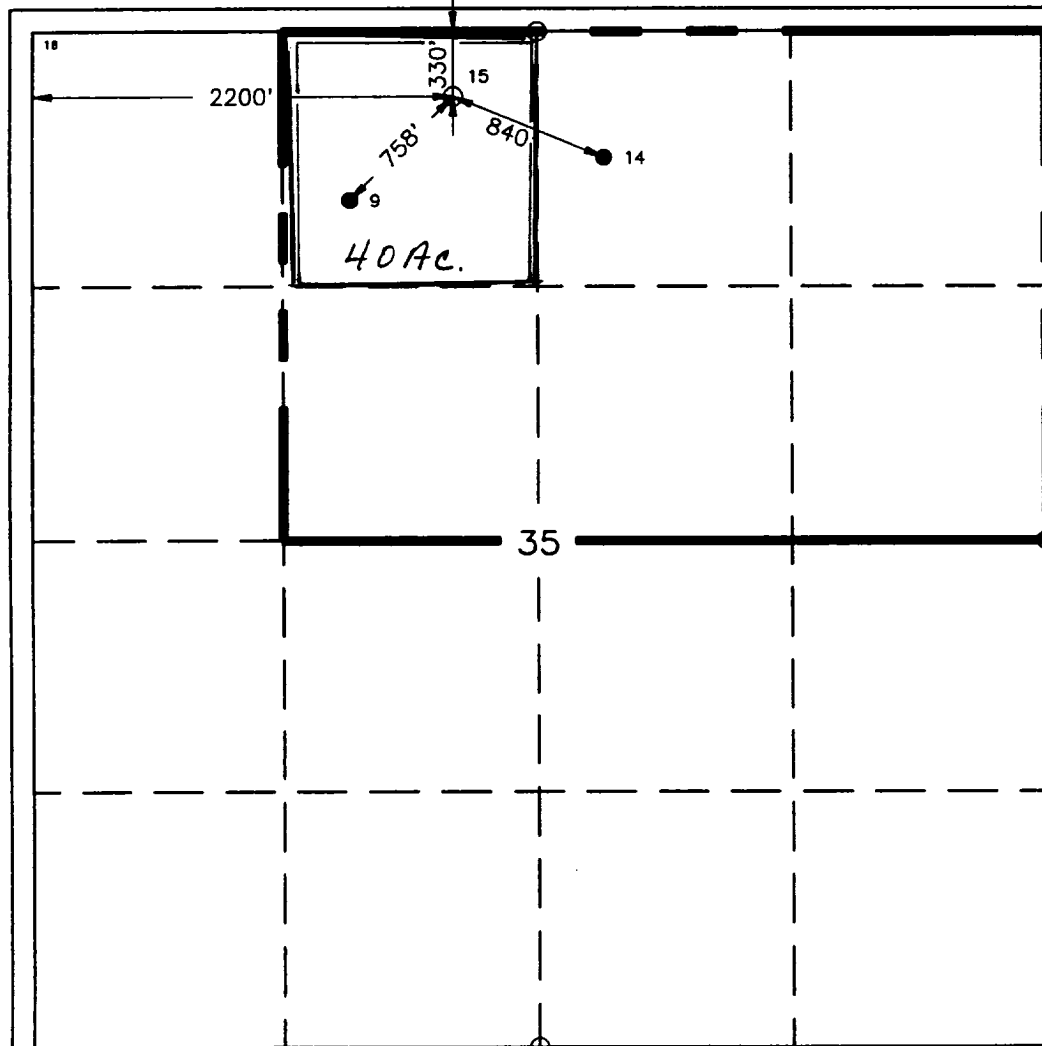
<sup>1</sup> API Number 30-025-33145		<sup>2</sup> Pool Code 34200/35280		<sup>3</sup> Pool Name Justis Blinebry; Justis Tubb/Drinkard	
<sup>4</sup> Property Code 10944		<sup>5</sup> Property Name C. C. Fristoe "B" Federal NCT-2			<sup>6</sup> Well Number 15
<sup>7</sup> GRID No. 22351		<sup>8</sup> Operator Name TEXACO EXPLORATION & PRODUCTION, INC.			<sup>9</sup> Elevation 3180'

<sup>10</sup> Surface Location									
UL or lot no. C	Section 35	Township 24-S	Range 37-E	Lot Idn	Feet from the 330'	North/South line North	Feet from the 2200'	East/West line West	<sup>7</sup> County Lea

<sup>11</sup> Bottom Hole Location If Different From Surface									
UL or lot no.	Section	Township	Range	Lot Idn	Feet from the	North/South line	Feet from the	East/West line	<sup>7</sup> County

<sup>12</sup> Dedicated Acres 40	<sup>13</sup> Joint or Infill	<sup>14</sup> Consolidation Code	<sup>15</sup> Order No.
-------------------------------------	-------------------------------	----------------------------------	-------------------------

NO ALLOWABLE WILL BE ASSIGNED TO THIS COMPLETION UNTIL ALL INTERESTS HAVE BEEN CONSOLIDATED  
OR A NON-STANDARD UNIT HAS BEEN APPROVED BY THE DIVISION.



<sup>16</sup> OPERATOR CERTIFICATION I hereby certify that the information contained herein is true and complete to the best of my knowledge and belief.	
Signature <i>C. Wade Howard</i>	
Printed Name C. Wade Howard	
Position Engineer's Assistant	
Company Texaco Expl. & Prod. Inc.	
Date August 30, 1995	
<sup>17</sup> SURVEYOR CERTIFICATION I hereby certify that the well location shown on this plat was plotted from field notes of actual surveys made by me or under my supervision, and that the same is true and correct to the best of my knowledge and belief.	
Date Surveyed August 10, 1995	
Signature & Seal of Professional Surveyor <i>John S. Piper</i>	
Certificate No. 7254 John S. Piper	
Sheet 8 of 8	

