

Form 3160-3
(December 1990)

SUBMIT IN TRIPLICATE

OPER. OGRID NO. 22351 **MISSION**

PROPERTY NO. 10929

UNITED STATES DEPARTMENT OF THE BUREAU OF LAND MANAGEMENT
POOL CODE 35280
EFF. DATE 12/18/95

API NO. 30-025-33234

ICO 88240 FORM APPROVED

Budget Bureau No. 1004-0136

Expires: December 31, 1991

APPLICATION FOR PERMIT TO DRILL OR DEEPEN

1a. Type of Work **DRILL** ☒ **DEEPEN** ☐
1b. Type of Well **SINGLE ZONE** ☒
OIL WELL ☒ **GAS WELL** ☐ **OTHER** ☐ **MULTIPLE ZONE** ☐

2. Name of Operator **TEXACO EXPLORATION & PRODUCTION INC.**

3. Address and Telephone No. **P.O. Box 3109, Midland Texas 79702 688-4606**

4. Location of Well (Report location clearly and in accordance with any State requirements.)
At Surface
Unit Letter **L** : **2310** Feet From The **SOUTH** Line and **330** Feet From The **WEST** Line
At proposed prod. zone
SAME

14. Distance in Miles and Direction from Nearest Town or Post Office*
5 MILES NE OF JAL, NM

15. Distance From Proposed* Location to Nearest Property or Lease Line, Ft. (also to nearest drig. unit line, if any) **330'**
16. No. of Acres in Lease **160**

18. Distance From Proposed Location* to Nearest Well, Drilling, Completed or Applied For, On This Lease, Ft. **742'**
19. Proposed Depth **7150'**

21. Elevations (Show whether DF, RT, GR, etc.)

GR-3180'

5. Lease Designation and Serial No.
LC-032874A

6. If Indian, Alottee or Tribe Name

7. If Unit or CA, Agreement Designation

8. Well Name and Number
G. L. ERWIN 'A' FEDERAL

9. API Well No.

10. Field and Pool, Exploratory Area
JUSTIS BLUNEY / JUSTIS TUBB DRINKARD

11. SEC., T., R., M., or BLK. and Survey or Area
Sec. **35**, Township **24S**, Range **37E**

12. County or Parish **LEA** 13. State **NM**

17. No. of Acres Assigned To This Well
40

20. Rotary or Cable Tools
ROTARY

22. Approx. Date Work Will Start*
12/15/95

23. PROPOSED CASING AND CEMENT PROGRAM

SIZE OF HOLE	GRADE, SIZE OF CASING	WEIGHT PER FOOT	SETTING DEPTH	QUANTITY OF CEMENT
*11	WC50, 8 5/8	24#	1000'	525 SACKS - <u>CIRCULATE</u>
7 7/8	WC50, L80, 5 1/2	15.5 & 17#	7150'	2000 SACKS - <u>CIRCULATE</u>

CEMENTING PROGRAM:

SURFACE CASING - 325 SACKS CLASS C W/ 4% GEL, 2% CACL2 (13.5 PPG, 1.74 CF/S, 9.11 GW/S). F/B 200 SACKS CLASS C W/ 2% CACL2 (14.8 PPG, 1.34 CF/S, 6.3 GW/S).

PRODUCTION CASING - 1500 SACKS 35/65 POZ CLASS H W/ 6% GEL, 5% SALT, 1/4# FLOCELE (12.4 PPG, 2.14 CF/S, 11.9 GW/S). F/B 500 SACKS 50/50 POZ CLASS H W/ 2% GEL, 5% SALT, 1/4# FLOCELE (14.2 PPG, 1.35 CF/S, 6.3 GW/S).

PARKER TRUST OPERATES A WELL IN THIS QUARTER QUARTER SECTION AND HAS BEEN FURNISHED A COPY OF THIS APPLICATION.

ESTIMATED DRILLING DAYS TO T.D.: 20 DAYS ESTIMATED COMPLETION DAYS: 15 DAYS

*VERBAL APPROVAL FROM JERRY SEXTON (NMOCD) 10/24/95 TO SET 8 5/8" SURFACE CASING IN AN 11" HOLE.

**APPROVAL SUBJECT TO
GENERAL REQUIREMENTS AND
SPECIAL STIPULATIONS
ATTACHED**

In Above Space Describe Proposed Program: If proposal is to deepen, give data on present productive zone and proposed new productive zone. If proposal is to drill or deepen directionally, give pertinent data on subsurface locations and measured true verticle depths. Give blowout preventer program, if any.

24. I hereby certify that the foregoing is true and correct

SIGNATURE C. Wade Howard TITLE Eng. Assistant DATE 11/1/95

TYPE OR PRINT NAME C. Wade Howard

(This space for Federal or State office use)

PERMIT NO. _____ APPROVAL DATE _____

Application approval does not warrant or certify that the applicant holds legal or equitable title to those rights in the subject lease which would entitle the applicant to conduct operations thereon.

APPROVED BY S. Gary Powers TITLE Acting Asst. Manager DATE DEC 1 1995

CONDITIONS OF APPROVAL, IF ANY:

Title 18 U.S.C. Section 1001, makes it a crime for any person knowingly and willfully to make to any department or agency of the United States any false, fictitious or fraudulent statements or representations as to any matter within its jurisdiction.

DISTRICT I
P. O. Box 1980, Hobbs, NM 88240

DISTRICT II
P. O. Drawer DD, Artesia, NM 88210

DISTRICT III
1000 Rio Brazos Rd., Aztec, NM 87410

DISTRICT IV
P. O. Box 2088, Santa Fe, NM 87504-2088

State of New Mexico
Energy, Minerals and Natural Resources Department

OIL CONSERVATION DIVISION
PO Box 2088
Santa Fe, NM 87504-2088

Form C-102
Revised February 10, 1994

Instructions on back

Submit to Appropriate District Office

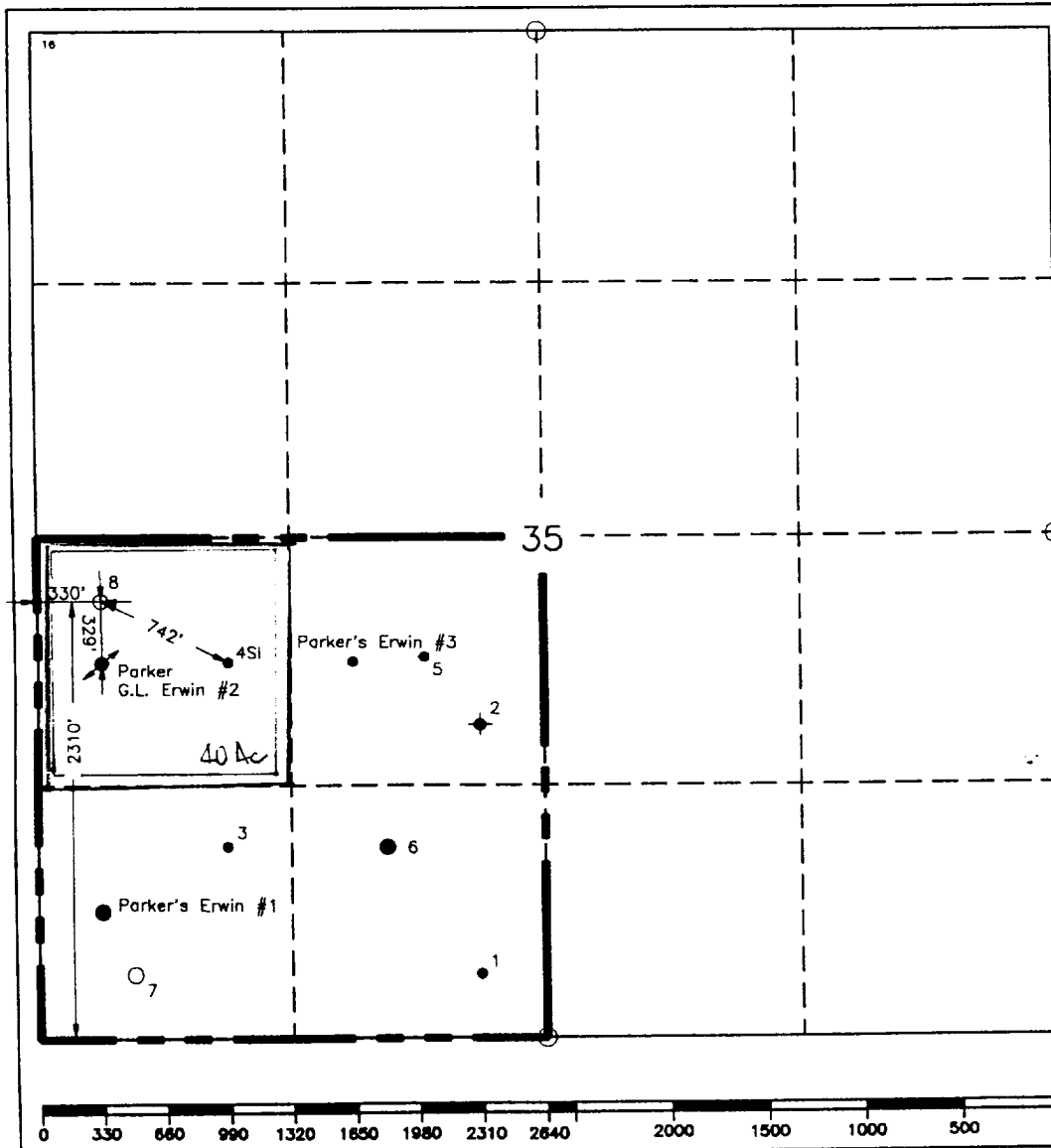
State Lease-4 copies
Fee Lease-3 copies

☐ AMENDED REPORT

WELL LOCATION AND ACREAGE DEDICATION PLAT

¹ API Number 30-025-33234		² Pool Code 34200/35280		³ Pool Name Justis Blinebry; Justis Tubb Drinkard					
⁴ Property Code 10929		⁵ Property Name G.L. Erwin "A" Federal			⁶ Well Number 8				
⁷ GRID No. 22351		⁸ Operator Name TEXACO EXPLORATION & PRODUCTION, INC.			⁹ Elevation 3189'				
¹⁰ Surface Location									
UL or lot no. L	Section 35	Township 24-S	Range 37-E	Lot Idn	Feet from the 2310'	North/South line South	Feet from the 330'	East/West line West	⁷ County Lea
¹¹ Bottom Hole Location If Different From Surface									
UL or lot no.	Section	Township	Range	Lot Idn	Feet from the	North/South line	Feet from the	East/West line	⁷ County
¹² Dedicated Acres 40		¹³ Joint or Infill		¹⁴ Consolidation Code		¹⁵ Order No.			

NO ALLOWABLE WILL BE ASSIGNED TO THIS COMPLETION UNTIL ALL INTERESTS HAVE BEEN CONSOLIDATED
OR A NON-STANDARD UNIT HAS BEEN APPROVED BY THE DIVISION.



¹⁶ OPERATOR CERTIFICATION I hereby certify that the information contained herein is true and complete to the best of my knowledge and belief.	
Signature <i>C. Wade Howard</i>	
Printed Name C. Wade Howard	
Position Engineer's Assistant	
Company Texaco Expl. & Prod. Inc.	
Date October 23, 1995	
¹⁷ SURVEYOR CERTIFICATION I hereby certify that the well location shown on this plat was plotted from field notes of actual surveys made by me or under my supervision, and that the same is true and correct to the best of my knowledge and belief.	
Date Surveyed October 9, 1995	
Signature & Seal of Professional Surveyor <i>John S. Piper</i>	
Certificate No. 7254 John S. Piper	
Sheet Sheet 8 of 8	

DRILLING PROGRAM

G. L. ERWIN 'A' FEDERAL WELL No. 8

SURFACE DESCRIPTION:

See Item 11 (other information) in the attached Surface Use and Operations Plan.

FORMATION TOPS: Estimated KB Elevation: 3199'

<u>Formation</u>	<u>Depth</u>	<u>Lithology</u>	<u>Fluid Content</u>
Rustler	975'	Anhy, Salt	----
Tansill	2270'	Anhy, Dolo	----
Yates	2500'	Sandstone, Anhy	----
Queen	3160'	Sandstone, Anhy	----
Blinebry	5150'	Dolomite, Anhy	Oil
Drinkard	6080'	Dolomite, Anhy	Oil
Abo	6325'	Dolo, Limestone	Oil
Devonian	7050'	Dolomite	Oil

The base of the salt section is the top of the Tansill at 2270'. No abnormal pressures or temperatures are anticipated to be encountered in this well. H₂S is present in the Blinebry. H₂S RADIUS OF EXPOSURE: 100ppm = 26', 500ppm = 12', based on 300ppm H₂S and 380 MCF (see attached H₂S Drilling Operations Plan. H₂S equipment to be operational prior to drilling out Surface Casing Shoe.)

PRESSURE CONTROL EQUIPMENT:

A 3000 psi Dual Ram type preventer with rotating head will be used. (See Exhibit C). We do not plan to have an annular preventer. We will be able to achieve full closure of the well with the double ram preventer. It will be installed after surface casing is set. BOP will be tested each time it is installed on a casing string and at least every 29 days, and operated at least once each 24-hour period during drilling.

A PVT system will not be installed. We will be drilling thru the reserve pit and will circulate the steel pits one hour each tour to check for gains and losses and will be noted on the driller's log, which is Texaco's policy.

We do not plan to run an automatic remote-controlled choke. We will have installed and tested two manual, H₂S trimmed, chokes.

CASING AND CEMENT PROGRAM:

The casing and cementing programs are detailed on Form 3160-3. All casing will be new.

Centralizer Program:

Surface Casing - Centralize the bottom 3 joints and every 4th to surface.

Production Casing - Centralize every 3rd joint on bottom 2000'.

MUD PROGRAM:

<u>Depth</u>	<u>Type</u>	<u>Weight</u>	<u>Viscosity</u>
0'-1000'	Fresh Water	8.4	28
1000'-5000'	Brine	10.0	29
5000'-7150'	Brine/Starch	10.0	32-36

Bottom Hole Pressure at T.D. estimated to be 6.7 PPG EMW (2491 psi).

LOGGING, TESTING:

GR-CNL-LDT, GR-DLL-MSFL, and GR-Sonic surveys will be run.

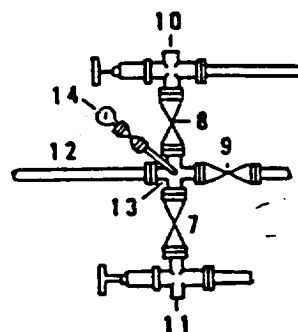
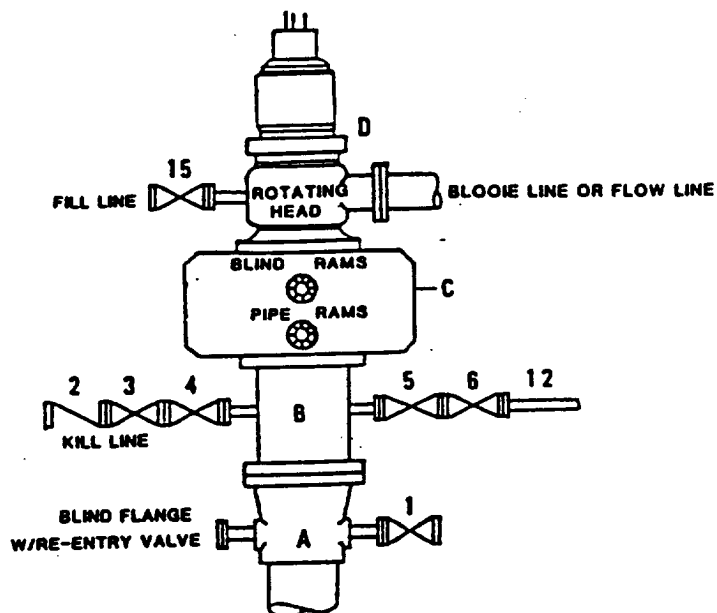
A two-man Mud Logging Unit will be used from 3300' to T.D.

No drill stem tests will be conducted.

No cores will be taken.

**DRILLING CONTROL
CONDITION II-B 3000 WP
FOR AIR DRILLING OR
WHERE NITROGEN OR AIR BLOWS ARE EXPECTED**

H₂S TRIM REQUIRED
YES X NO



DRILLING CONTROL

MATERIAL LIST - CONDITION II - B

- | | |
|----------------|---|
| A | Texaco Wellhead |
| B | 3000# W.P. drilling spool with a 2" minimum flanged outlet for kill line and 3" minimum flanged outlet for choke line. |
| C | 3000# W.P. Dual ram type preventer, hydraulic operated with 1" steel, 3000# W.P. control lines (where sub-structure height is adequate, 2 - 3000# W.P. single ram type preventers may be utilized). |
| D | Rotating Head with fill up outlet and extended Blooe Line. |
| 1,3,4,
7,8, | 2" minimum 3000# W.P. flanged full opening steel gate valve, or Halliburton Lo Torc Plug valve. |
| 2 | 2" minimum 3000# W.P. back pressure valve. |
| 5,6,9 | 3" minimum 3000# W.P. flanged full opening steel gate valve, or Halliburton Lo Torc Plug valve. |
| 12 | 3" minimum schedule 80, Grade "B", seamless line pipe. |
| 13 | 2" minimum x 3" minimum 3000# W.P. flanged cross. |
| 10,11 | 2" minimum 3000# W.P. adjustable choke bodies. |
| 14 | Cameron Mud Gauge or equivalent (location optional in choke line). |
| 15 | 2" minimum 3000# W.P. flanged or threaded full opening steel gate valve, or Halliburton Lo Torc Plug valve. |



TEXACO, INC.
MIDLAND DIVISION
MIDLAND, TEXAS



SCALE	DATE	EST. NO.	ORG. NO.
DRAWN BY			
CHECKED BY			
APPROVED BY			

EXHIBIT C

SURFACE USE AND OPERATIONS PLAN
FOR
TEXACO EXPLORATION AND PRODUCTION, INC.

G. L. ERWIN "A" FEDERAL No. 8
2310' FSL & 330' FWL SECTION 35,
TWP. 24 SOUTH, RANGE 37 EAST, N.M.P.M.,
LEA COUNTY, NEW MEXICO

LOCATED: 5.2 miles Northeasterly of Jal, New Mexico

FEDERAL LEASE NUMBER: LC 032874

LEASE ISSUED: Lease is in a producing status

ACRES IN LEASE: 160

RECORD LESSEE: TEXACO EXPLORATION AND PRODUCTION, Inc.

SURFACE OWNERSHIP: Joyce Willis
P. O. Box 307
Jal, New Mexico 88252

POOL: Justis Blinebry; Justis Tubb Drinkard

POOL RULES: Field Rules are for no wells to be located closer than 330' to any quarter-quarter section and to be 330' from the lease line.

EXHIBITS: A. Access Road and Facilities Map

B. Drilling Rig Layout Diagram

C. Well Location and Acreage Dedication Plat