

UNITED STATES
DEPARTMENT OF THE INTERIOR
BUREAU OF LAND MANAGEMENT

N.M. Oil Cons. Division
1625 N. French Dr.
Hobbs, NM 88240

FORM APPROVED

Budget Bureau No. 1004-0135

Expires: March 31, 1993

SUNDRY NOTICES AND REPORTS ON WELLS

Do not use this form for proposals to drill or to deepen or reentry to a different reservoir.

Use "APPLICATION FOR PERMIT --" for such proposals

SUBMIT IN TRIPLICATE

1. Type of Well: ☒ OIL WELL ☐ GAS WELL ☐ OTHER

2. Name of Operator
TEXACO EXPLORATION & PRODUCTION INC.

3. Address and Telephone No. 205 E. Bender, HOBBS, NM 88240 397-0405

4. Location of Well (Footage, Sec., T., R., M., or Survey Description)
Unit Letter D : 990 Feet From The NORTH Line and 990 Feet From The

WEST Line Section 35 Township 24-S Range 37-E

5. Lease Designation and Serial No.

NM-10934

6. If Indian, Alottee or Tribe Name

7. If Unit or CA, Agreement Designation

8. Well Name and Number

FRISTOE, C. C. -A- FED. NCT-1

12

9. API Well No.

30-025-33382

10. Field and Pool, Exploratory Area

JUSTIS BLINEBRY TUBB DRINKARD

11. County or Parish, State

LEA, NM

12. Check Appropriate Box(s) To Indicate Nature of Notice, Report, or Other Data

TYPE OF SUBMISSION

TYPE OF ACTION

☒ Notice of Intent
☐ Subsequent Report
☐ Final Abandonment Notice

☐ Abandonment
☐ Recompletion
☐ Plugging Back
☐ Casing Repair
☐ Altering Casing

☒ OTHER: ADD PAY LOWER BLINEBRY

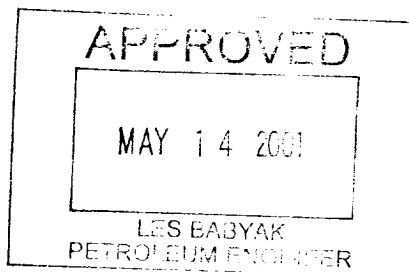
☐ Change of Plans
☐ New Construction
☐ Non-Routine Fracturing
☐ Water Shut-Off
☐ Conversion to Injection
☐ Dispose Water

(Note: Report results of multiple completion on Well Completion or Recompletion Report and Log Form.)

13. Describe Proposed or Completed Operations (Clearly state all pertinent details, and give pertinent dates, including estimated date of starting any proposed work. If well is directionally drilled, give subsurface locations and measured and true vertical depths for all markers and zones pertinent to this work.)

TEXACO INTENDS TO ADD ADD'L PAY TO THE LOWER BLINEBRY RESERVOIR. INTENDED PROCEDURE IS AS FOLLOWS:

- 1) MIRU PU. INSTL BOP. REL TAC. TIH W/CSG SCRAPER TO 6288. TIH W/PKR & RBP. RBP @ 6300. PKR @ 5800'.
- 2) DRINKARD: PUMP 500 GALS ACID 1500# SALT BLOCK PUMP 10# BRINE FOR DISPLACEMENT. FOLLOW W/1500 GALS ACID 1600# SALT BLOCK & 2000 GALS ACID. FLUSH TO BTM. SCALE SQUEEZE. PULL RBP TO 6000.
- 3) PERF 5655-5952. SET PKR @ 5525'.
- 4) LOWER BLINEBRY: PUMP 15% HCL. PUMP 3000 GALS 15% HCL W/125 BALL SEALERS.
- 5) REL PKR. RETR BALL CATCHER. RETR RBP & RESET @ 5525. SET PKR @ 4970'.
- 6) UPPER BLINEBRY: PUMP 500 GALS ACID. DUMP 1600# SALT BLOCK PUMP. PUMP 1000 GALS 15% AZCID. REL PKR. LATCH ONTO RBP @ 5525.
- 7) TIH W/TBG ONE OPEN ENDED JOINT W/PIN COLLAR SET SN @ 6257. TAC @ 5980. SPOT 5 GALS TH-3036 IN TBG AT SURF PRIOR TO RUNNING RDS.
- 8) TIH W/RDS & PMP.
- 9) PLACE ON PUMP & TEST.



14. I hereby certify that the foregoing is true and correct.

SIGNATURE *J. Denise Leake* TITLE Engineering Assistant

DATE 5/7/01

TYPE OR PRINT NAME J. Denise Leake

(This space for Federal or State office use)

APPROVED

CONDITIONS OF APPROVAL IF ANY: TITLE DATE

Title 18 U.S.C. Section 1001, makes it a crime for any person knowingly and willfully to make to any department or agency of the United States any false, fictitious or fraudulent statements or representations as to any matter within its jurisdiction.

RECEIVED
MAY 09 2001
BLM
ROSWELL, NM



DISTRICT I

P.O. Box 1980, Hobbs, NM 88241-1980

DISTRICT II

P.O. Box Drawer DD, Artesia, NM 88211-0719

DISTRICT III

100 Rio Brazos Rd., Aztec, NM 87410

DISTRICT IV

P.O. Box 2088, Santa Fe, NM 87504-2088

State of New Mexico

Energy, Minerals and Natural Resources Department

Form C-102

Revised February 10, 1999

Instructions on back

Submit to Appropriate District Office

State Lease - 4 Copies

Fee Lease - 3 Copies

AMENDED REPORT

OIL CONSERVATION DIVISION

P.O. Box 2088

Santa Fe, New Mexico 87504-2088

WELL LOCATION AND ACREAGE DEDICATION PLAT

1 API Number 30-025-33382	2 Pool Code 34220	3 Pool Name JUSTIS BLINEBRY TUBB DRINKARD
4 Property Code 10942	5 Property Name FRISTOE, C. C. -A- FED. NCT-1	6 Well No. 12
7 OGRID Number 022351	8 Operator Name TEXACO EXPLORATION & PRODUCTION INC.	9 Elevation 3186'GL

10 Surface Location

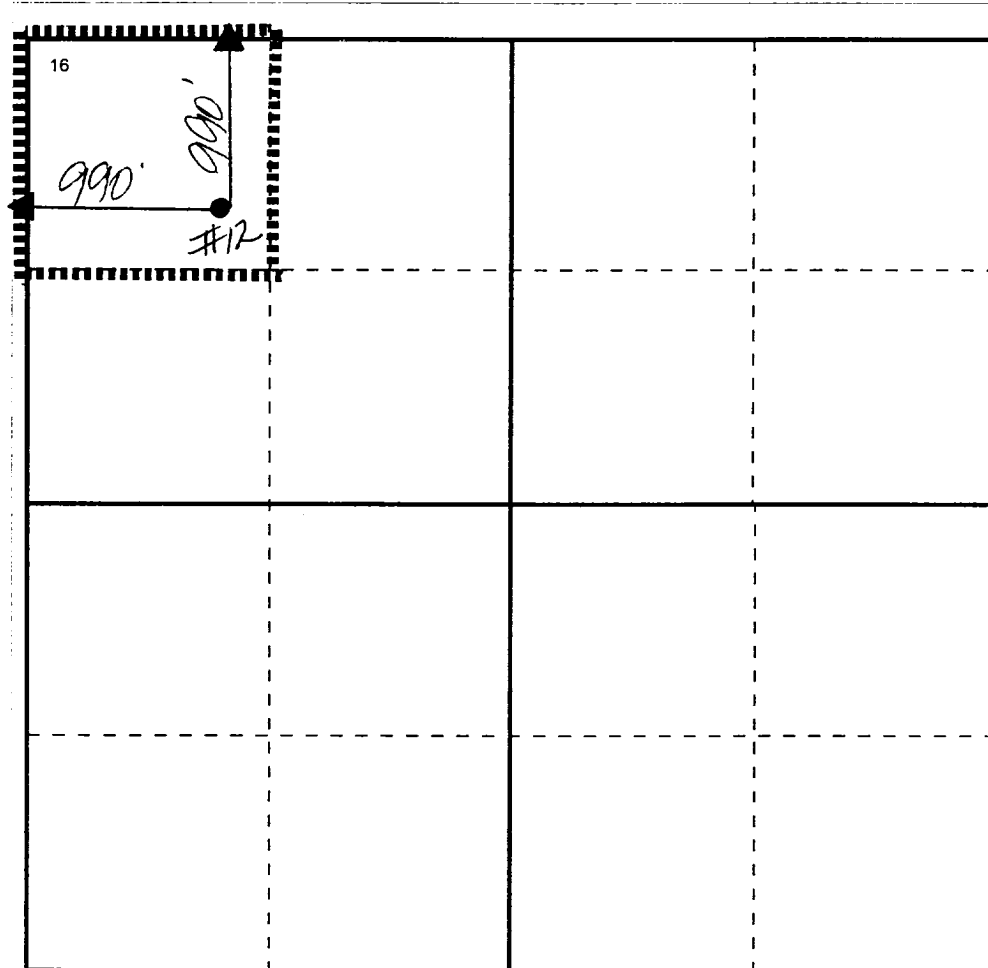
UI or lot no	Section	Township	Range	Lot.Idn	Feet From The	North/South Line	Feet From The	East/West Line	County
D	35	24-S	37-E		990	NORTH	990	WEST	LEA

11 Bottom Hole Location If Different From Surface

UI or lot no	Section	Township	Range	Lot.Idn	Feet From The	North/South Line	Feet From The	East/West Line	County
--------------	---------	----------	-------	---------	---------------	------------------	---------------	----------------	--------

12 Dedicated Acre 40	13 Joint or Infill No	14 Consolidation Code	15 Order No.
-------------------------	--------------------------	-----------------------	--------------

NO ALLOWABLE WILL BE ASSIGNED TO THIS COMPLETION UNTIL ALL INTERESTS HAVE BEEN CONSOLIDATED
OR A NON-STANDARD UNIT HAS BEEN APPROVED BY THE DIVISION



17 OPERATOR CERTIFICATION

I hereby certify that the information
contained herein is true and complete to the
best of my knowledge and belief

Signature

J. Denise Leake

Printed Name

J. Denise Leake

Position

Engineering Assistant

Date

5/7/01

18 SURVEYOR CERTIFICATION

I hereby certify that the well location shown
on this plat was plotted from field notes of
actual surveys made by me or under my
supervision, and that the same is true and
correct to the best of my knowledge and
belief.

Date Surveyed

Signature & Seal of
Professional Surveyor

Certificate No.

0 330 660 990 132 165 1980 2310 2640 2000 1500 1000 500 0

