

June 7, 2000

Texaco Exploration and Production
500 N Loraine
Midland, TX 79702
915-688-2982

New Mexico Oil Conservation Division
2040 South Pacheco
Santa Fe, NM 87505

Re: Application to form Project Area and request for Simultaneous Dedication for CC
Fristoe B2 #17

Attn: Mr. Mike Stogner

Dear Sir;

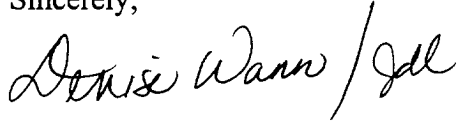
Texaco Exploration and Production Inc. respectfully requests approval to form a Project Area in the North Justis Tubb Drinkard. The Project Area will consist of 80 acres, as shown on the attached plat. This will accommodate the drilling of a horizontal lateral in Well No. 17. All of this acreage is within the CC Fristoe B Lease.

The CC Fristoe B 2 #17 will have a single horizontal lateral going to the north with an approximate bottomhole location of 917' FNL and 2256' FWL of Section 35, T24S, R37E in Lea County.

As shown on the plat, Texaco is also requesting simultaneous dedication in the North Justis Tubb Drinkard for wells #15 and #17, as acreage will be shared with these wells.

If you have any question concerning this matter please contact Cory Hoffman at (915) 688-4688, Denise Leake at 915-688-4752 or Denise Wann at (915) 688-2982. Thank you in advance for your attention to this matter.

Sincerely,

A handwritten signature in black ink that reads "Denise Wann / Jdl". The signature is written in a cursive, flowing style.

Denise Wann
Production Engineer
Hobbs Operating Unit

cc: NMOCD (Hobbs), Offset Operators

File
Attachments

DISTRICT I

P.O. Box 1980, Hobbs, NM 88241-1980

DISTRICT II

P.O. Box Drawer DD, Artesia, NM 88211-0719

DISTRICT III

1000 Rio Brazos Rd., Aztec, NM 87410

DISTRICT IV

P.O. Box 2088, Santa Fe, NM 87504-2088

State of New Mexico

Energy, Minerals and Natural Resources Department

OIL CONSERVATION DIVISION

P.O. Box 2088

Santa Fe, New Mexico 87504-2088

Form C-10

Revised February 10, 1999

Instructions on back

Submit to Appropriate District Office

State Lease - 4 Copies

Fee Lease - 3 Copies

☐ AMENDED REPORT

WELL LOCATION AND ACREAGE DEDICATION PLAT

¹ API Number 30-025-33145	² Pool Code 34200	³ Pool Name JUSTIS BLINEBRY
⁴ Property Code 010944	⁵ Property Name FRISTOE, C. C. -B- FED. NCT-2	
⁷ OGRID Number 022351	⁸ Operator Name TEXACO EXPLORATION & PRODUCTION INC.	⁶ Well No. 15
		⁹ Elevation

¹⁰ Surface Location

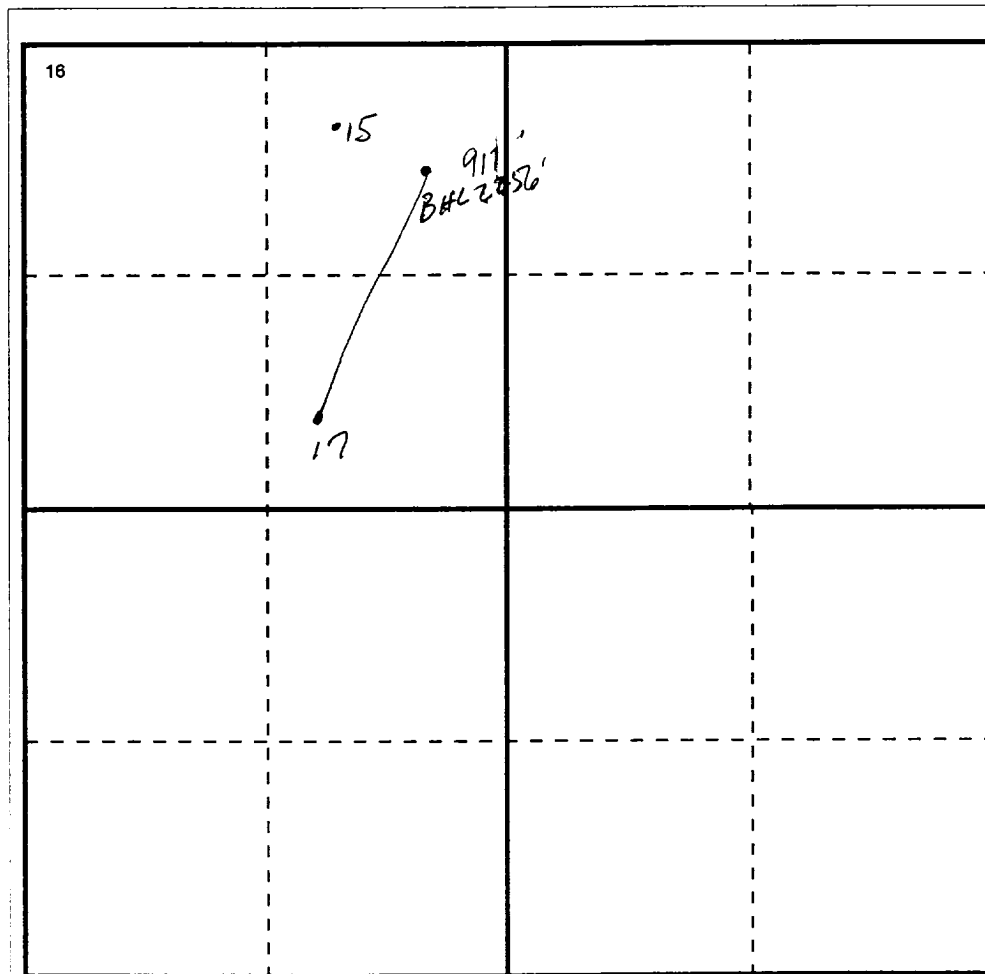
UI or lot no	Section	Township	Range	Lot.Idn	Feet From The	North/South Line	Feet From The	East/West Line	County
C	35	24-S	37-E		330'	NORTH	2200'	WEST	LEA

¹¹ Bottom Hole Location If Different From Surface

UI or lot no	Section	Township	Range	Lot.Idn	Feet From The	North/South Line	Feet From The	East/West Line	County

¹² Dedicated Acre 80	¹³ Joint or Infill No	¹⁴ Consolidation Code	¹⁵ Order No.
------------------------------------	-------------------------------------	----------------------------------	-------------------------

NO ALLOWABLE WILL BE ASSIGNED TO THIS COMPLETION UNTIL ALL INTERESTS HAVE BEEN CONSOLIDATED
OR A NON-STANDARD UNIT HAS BEEN APPROVED BY THE DIVISION

¹⁷ OPERATOR CERTIFICATION

I hereby certify that the information contained herein is true and complete to the best of my knowledge and belief

Signature

Printed Name

J. Denise Leake

Position

Engineering Assistant

Date

6/7/00

¹⁸ SURVEYOR CERTIFICATION

I hereby certify that the well location shown on this plat was plotted from field notes of actual surveys made by me or under my supervision, and that the same is true and correct to the best of my knowledge and belief.

Date Surveyed

Signature & Seal of
Professional Surveyor

Certificate No.

0 330 660 990 132 165 1980 2310 2640 2000 1500 1000 500 0

DISTRICT I

P.O. Box 1980, Hobbs, NM 88241-1980

DISTRICT II

P.O. Box Drawer DD, Artesia, NM 88211-0719

DISTRICT III

1000 Rio Brazos Rd., Aztec, NM 87410

DISTRICT IV

P.O. Box 2088, Santa Fe, NM 87504-2088

State of New Mexico

Energy, Minerals and Natural Resources Department

Form C-10

Revised February 10, 1999

Instructions on back

Submit to Appropriate District Office

State Lease - 4 Copie

Fee Lease - 3 Copie

☐ AMENDED REPORT

OIL CONSERVATION DIVISION

P.O. Box 2088

Santa Fe, New Mexico 87504-2088

WELL LOCATION AND ACREAGE DEDICATION PLAT

¹ API Number 30-025-33383	² Pool Code	³ Pool Name NORTH JUSTIS TUBB DRINKARD
⁴ Property Code 010944	⁵ Property Name FRISTOE, C. C. -B- FED. NCT-2	⁶ Well No. 17
⁷ OGRID Number 022351	⁸ Operator Name TEXACO EXPLORATION & PRODUCTION INC.	⁹ Elevation

¹⁰ Surface Location

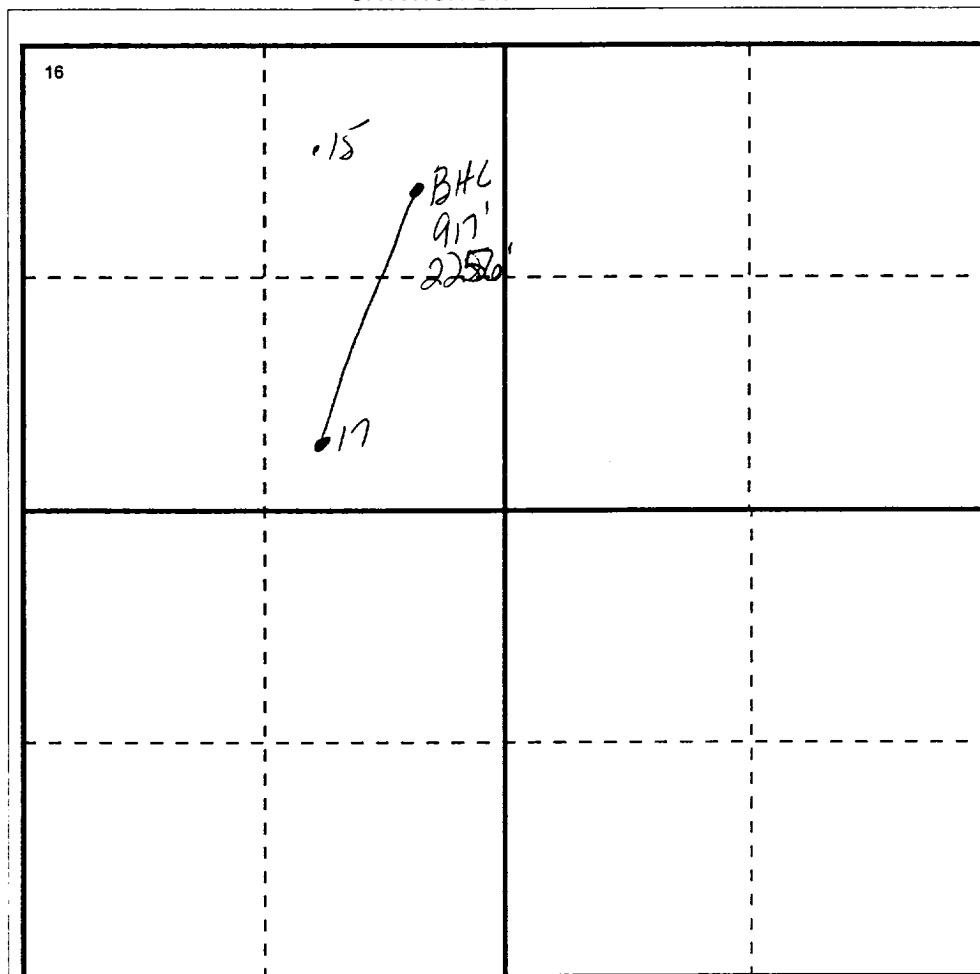
Ul or lot no F	Section 35	Township 24S	Range 37-E	Lot.Idn	Feet From The 2310'	North/South Line NORTH	Feet From The 1650'	East/West Line WEST	County LEA
-------------------	---------------	-----------------	---------------	---------	------------------------	---------------------------	------------------------	------------------------	---------------

¹¹ Bottom Hole Location If Different From Surface

Ul or lot no C	Section 35	Township 24S	Range 37E	Lot.Idn	Feet From The 917'	North/South Line NORTH	Feet From The 2256'	East/West Line WEST	County LEA
-------------------	---------------	-----------------	--------------	---------	-----------------------	---------------------------	------------------------	------------------------	---------------

¹² Dedicated Acre 80	¹³ Joint or Infill No	¹⁴ Consolidation Code	¹⁵ Order No.
------------------------------------	-------------------------------------	----------------------------------	-------------------------

NO ALLOWABLE WILL BE ASSIGNED TO THIS COMPLETION UNTIL ALL INTERESTS HAVE BEEN CONSOLIDATED
OR A NON-STANDARD UNIT HAS BEEN APPROVED BY THE DIVISION



¹⁷ OPERATOR CERTIFICATION I hereby certify that the information contained herein is true and complete to the best of my knowledge and belief
Signature <i>J. Denise Leake</i>
Printed Name J. Denise Leake
Positio Engineering Assistant
Date 6/7/00
¹⁸ SURVEYOR CERTIFICATION I hereby certify that the well location shown on this plat was plotted from field notes of actual surveys made by me or under my supervision, and that the same is true and correct to the best of my knowledge and belief.
Date Surveyed
Signature & Seal of Professional Surveyor
Certificate No.

0 330 660 990 132 165 1980 2310 2640 2000 1500 1000 500 0

DISTRICT I
P. O. Box 1980, Hobbs, NM 88240

DISTRICT II
P. O. Drawer DD, Artesia, NM 88210

DISTRICT III
1000 Rio Brazos Rd., Aztec, NM 87410

DISTRICT IV
P. O. Box 2088, Santa Fe, NM 87504-2088

State of New Mexico
Energy, Minerals and Natural Resources Department

OIL CONSERVATION DIVISION

PO Box 2088
Santa Fe, NM 87504-2088

Form C-102
Revised February 10, 1994

Instructions on back

Submit to Appropriate District Office

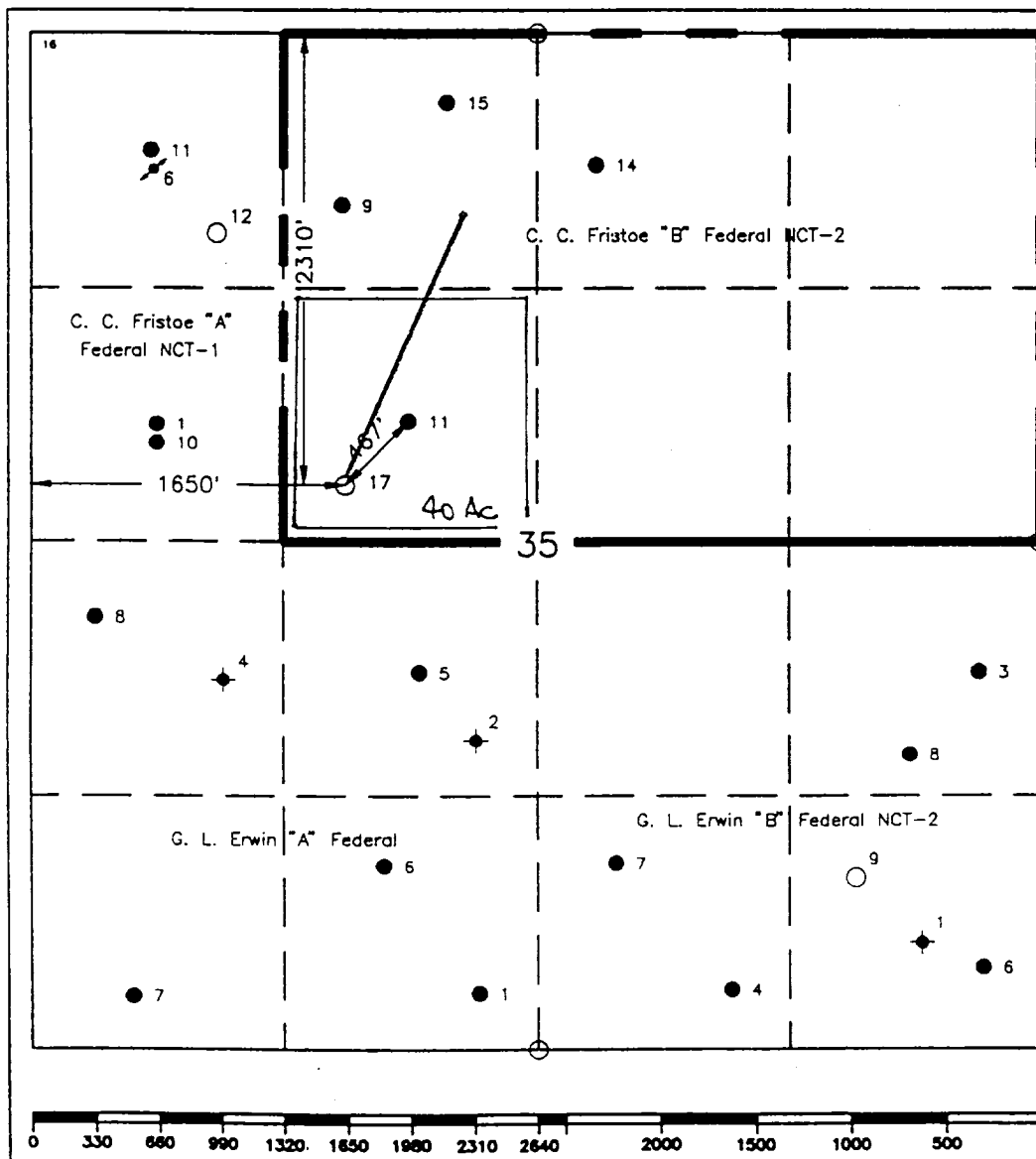
State Lease-4 copies
Fee Lease-3 copies

☐ AMENDED REPORT

WELL LOCATION AND ACREAGE DEDICATION PLAT

¹ API Number		² Pool Code		³ Pool Name Justis Blinebry & Justis Tubb Drinkard					
⁴ Property Code 10944		⁵ Property Name C. C. Fristoe "B" Federal NCT-2						⁶ Well Number 17	
⁷ OGRID No. 22351		⁸ Operator Name TEXACO EXPLORATION & PRODUCTION, INC.						⁹ Elevation 3181'	
¹⁰ Surface Location									
UL or lot no. F	Section 35	Township 24-S	Range 37-E	Lot Idn	Feet from the 2310'	North/South line North	Feet from the 1650'	East/West line West	County Lea
¹¹ Bottom Hole Location if Different From Surface									
UL or lot no.	Section	Township	Range	Lot Idn	Feet from the	North/South line	Feet from the	East/West line	County
¹² Dedicated Acres 40		¹³ Joint or Infill		¹⁴ Consolidation Code		¹⁵ Order No.			

NO ALLOWABLE WILL BE ASSIGNED TO THIS COMPLETION UNTIL ALL INTERESTS HAVE BEEN CONSOLIDATED
OR A NON-STANDARD UNIT HAS BEEN APPROVED BY THE DIVISION.



¹⁶ OPERATOR CERTIFICATION

I hereby certify that the information contained herein is true and complete to the best of my knowledge and belief.

Signature

Printed Name

Position

Company

Date

March 4, 1996

¹⁷ SURVEYOR CERTIFICATION

I hereby certify that the well location shown on this plat was plotted from field notes of actual surveys made by me or under my supervision, and that the same is true and correct to the best of my knowledge and belief.

Date Surveyed

February 5, 1996

Signature & Seal of Professional Surveyor

Certificate No.

7254 John S. Piper

Sheet 8 of 8

