

DISTRICT I

P.O. Box 1980, Hobbs, NM 88241-1980

DISTRICT II

P.O. Box Drawer DL, Artesia, NM 88211-0719

DISTRICT III

1000 Rio Brazos Rd., Aztec, NM 87410

DISTRICT IV

P.O. Box 2088, Santa Fe, NM 87504-2088

State of New Mexico

Energy, Minerals and Natural Resources Department

OIL CONSERVATION DIVISION

P.O. Box 2088

Santa Fe, New Mexico 87504-2088

Form C-102

Revised February 10, 1999

Instructions on back

Submit to Appropriate District Office

State Lease - 4 Copies

Fee Lease - 3 Copies

☐ AMENDED REPORT

WELL LOCATION AND ACREAGE DEDICATION PLAT

| | | |
|---|---|---|
| ¹ API Number 30-025-33383 | ² Pool Code 37240 | ³ Pool Name LANGLIE MATTIX 7 RV QN GRAYBURG |
| ⁴ Property Code | ⁵ Property Name C. C. FRISTOE B FEDERAL NCT-2 | ⁶ Well No. 17 |
| ⁷ OGRID Number 4323 | ⁸ Operator Name CHEVRON USA INC | ⁹ Elevation |

¹⁰ Surface Location

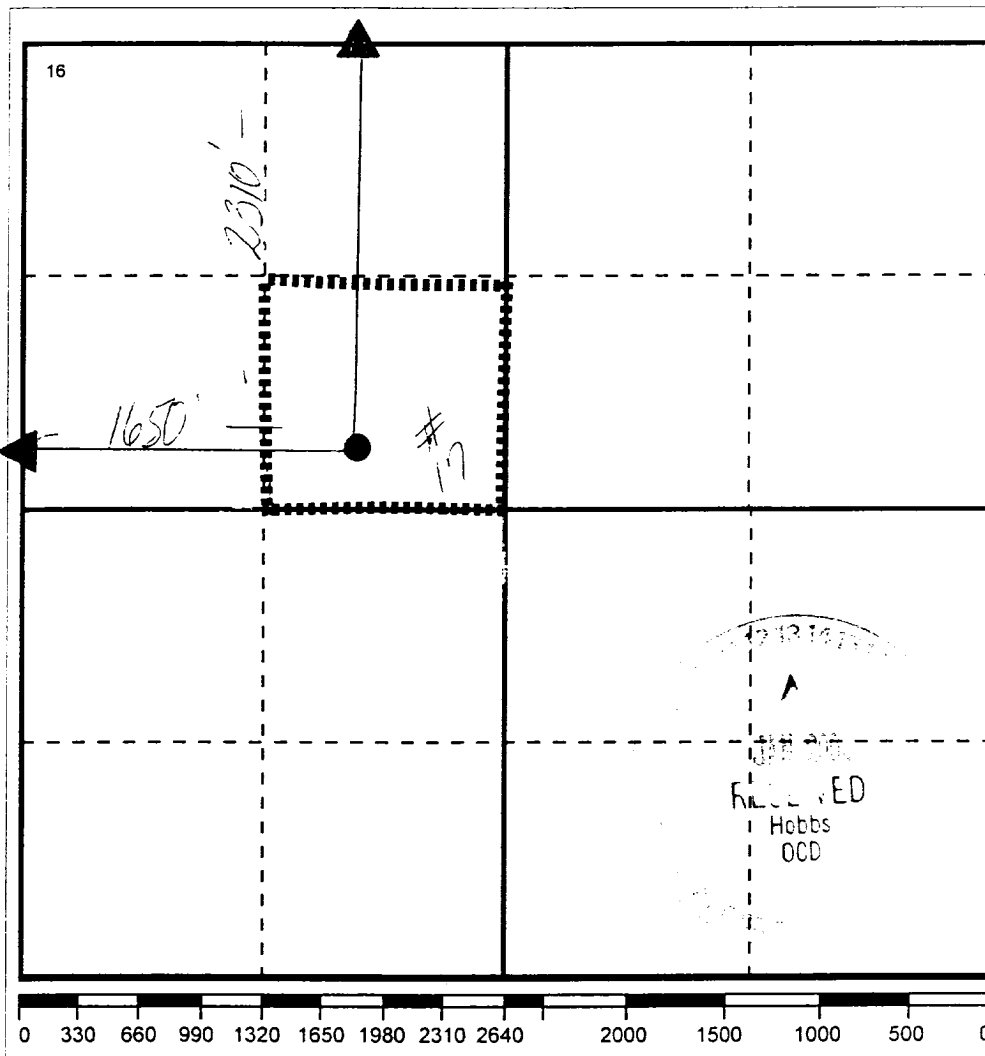
| Ul or lot no | Section | Township | Range | Lot.Idn | Feet From The | North/South Line | Feet From The | East/West Line | County |
|--------------|---------|----------|-------|---------|---------------|------------------|---------------|----------------|--------|
| F | 35 | 24-S | 37-E | | 2310 | NORTH | 1650 | WEST | LEA |

¹¹ Bottom Hole Location If Different From Surface

| Ul or lot no. | Section | Township | Range | Lot.Idn | Feet From The | North/South Line | Feet From The | East/West Line | County |
|---------------|---------|----------|-------|---------|---------------|------------------|---------------|----------------|--------|
| | | | | | | | | | |

| | | | |
|------------------------------------|-------------------------------------|----------------------------------|-------------------------|
| ¹² Dedicated Acre 40 | ¹³ Joint or Infill No | ¹⁴ Consolidation Code | ¹⁵ Order No. |
|------------------------------------|-------------------------------------|----------------------------------|-------------------------|

NO ALLOWABLE WILL BE ASSIGNED TO THIS COMPLETION UNTIL ALL INTERESTS HAVE BEEN CONSOLIDATED
OR A NON-STANDARD UNIT HAS BEEN APPROVED BY THE DIVISION

¹⁷ OPERATOR CERTIFICATION

I hereby certify that the information contained herein is true and complete to the best of my knowledge and belief

Signature

Denise Leake

Printed Name

Denise Leake

Position

Regulatory Specialist

Date

1/10/2003

¹⁸ SURVEYOR CERTIFICATION

I hereby certify that the well location shown on this plat was plotted from field notes of actual surveys made by me or under my supervision, and that the same is true and correct to the best of my knowledge and belief.

Date Surveyed

Signature & Seal of

Professional Surveyor

Certificate No.