

Form 3180-3  
(December 1980)

SUBMIT IN TRIPLICATE

UNION  
DEPARTMENT  
BUREAU OF

OPER. OGRID NO. 22351

PROPERTY NO. 10931

POOL CODE 34780

EFF. DATE 4/1/96

API NO. 58-225-33384

ONS. COMMISSION

1980

NEW MEXICO 88240

FORM APPROVED

Budget Bureau No. 1004-0138

Expires: December 31, 1991

APPLICATION FOR PERMIT TO DRILL OR DEEPEN

1a. Type of Work **DRILL** ☒ **DEEPEN** ☐  
1b. Type of Well **OIL WELL** ☒ **GAS WELL** ☐ **OTHER** ☐  
**SINGLE ZONE** ☒  
**MULTIPLE ZONE** ☐

2. Name of Operator  
**TEXACO EXPLORATION & PRODUCTION INC.**

3. Address and Telephone No.  
**P.O. Box 3109, Midland Texas 79702 688-4008**

4. Location of Well (Report location clearly and in accordance with any State requirements.)  
At Surface  
Unit Letter **P : 900 Feet From The South Line and 990 Feet From The East Line**  
At proposed prod. zone  
**SAME**

14. Distance in Miles and Direction from Nearest Town or Post Office  
**5 miles NE of JAL, NM**

15. Distance From Proposed Location to Nearest Property or Lease Line, FL (also to nearest drg. unit line, if any)  
**900'**

16. No. of Acres in Lease  
**160**

18. Distance From Proposed Location to Nearest Well, Drilling, Completed or Applied For, On This Lease, FL  
**484'**

19. Proposed Depth  
**6450'**

21. Elevations (Show whether DF, RT, GR, etc.)  
**GR - 3155'**

22. Approx. Date Work Will Start  
**4/1/96**

PROPOSED CASING AND CEMENT PROGRAM

SIZE OF HOLE	GRADE, SIZE OF CASING	WEIGHT PER FOOT	SETTING DEPTH	QUANTITY OF CEMENT
<b>11</b>	<b>WC50, 8 5/8"</b>	<b>24 #</b>	<b>1000'</b>	<b>525 SACKS - CIRCULATE</b>
<b>7 7/8</b>	<b>WC50, WC70, 5 1/2"</b>	<b>15.5 + 17 #</b>	<b>6450'</b>	<b>1400 SACKS - CIRCULATE</b>

CEMENT PROGRAM:

SURFACE CSG: 325 SACKS CLASS 'C' w/4% GEL, 270 CC (13.5 PPG, 1.74 CF/S, 9.1 GW/S) F/B 200 SACKS CLASS 'C' w/270 CC (14.8 PPG, 1.34 CF/S, 6.3 GW/S).

PRODUCTION CSG: 1st STG: 700 SACKS 50/50 Poz 'H' w/270 GEL, 570 SALT, 1/4 # FC (14.2 PPG, 1.35 CF/S, 6.3 GW/S)

DV TOOL @ 4000': 2nd STG: 600 SACKS 35/65 Poz 'H' w/670 GEL, 570 SALT, 1/4 # FC (12.8 PPG, 2.14 CF/S, 11.9 GW/S) F/B 100 SACKS CLASS H (15.6 PPG, 1.18 CF/S, 5.2 GW/S)

THERE ARE NO OTHER OPERATORS IN THIS 1/4 1/4 SECTION.

ESTIMATED DRILLING DAYS: 4 DAYS. ESTIMATED COMPLETION DAYS: 15 DAYS

\* VERBAL APPROVAL FROM JERRY SEXTON (NMOCB) 2/26/96 TO SET 8 5/8" SURFACE

APPROVAL SUBJECT TO  
GENERAL REQUIREMENTS AND  
SPECIAL STIPULATIONS.  
ATTACHED

In Above Space Describe Proposed Program: If proposal is to deepen, give data on present productive zone and proposed new productive zone. If proposal is to drill or deepen directionally, give pertinent data on subsurface locations and measured true vertical depths. Give blowout prevention program, if any.

24. I hereby certify that the foregoing is true and correct

SIGNATURE C. Wade Howard TITLE **Eng. Assistant**

TYPE OR PRINT NAME **C. Wade Howard**

DATE **3/4/96**

(This space for Federal or State office use)

PERMIT NO. \_\_\_\_\_ APPROVAL DATE \_\_\_\_\_

Application approval does not warrant or certify that the applicant holds legal or equitable title to those rights in the subject lease which would entitle the applicant to conduct operations thereon.

APPROVED BY **Timothy P. O'Brien**

TITLE Acting AREA MANAGER

DATE **APR 11 1996**

CONDITIONS OF APPROVAL, IF ANY:

Title 18 U.S.C. Section 1001, makes it a crime for any person knowingly and willfully to make to any department or agency of the United States any false, fictitious or fraudulent statements or representations as to any matter within its jurisdiction.

DISTRICT I  
P. O. Box 1980, Hobbs, NM 88240

DISTRICT II  
P. O. Drawer DD, Artesia, NM 88210

DISTRICT III  
1000 Rio Brazos Rd., Aztec, NM 87410

DISTRICT IV  
P. O. Box 2088, Santa Fe, NM 87504-2088

State of New Mexico  
Energy, Minerals and Natural Resources Department

OIL CONSERVATION DIVISION

PO Box 2088  
Santa Fe, NM 87504-2088

Form C-102  
Revised February 10, 1994

Instructions on back

Submit to Appropriate District Office

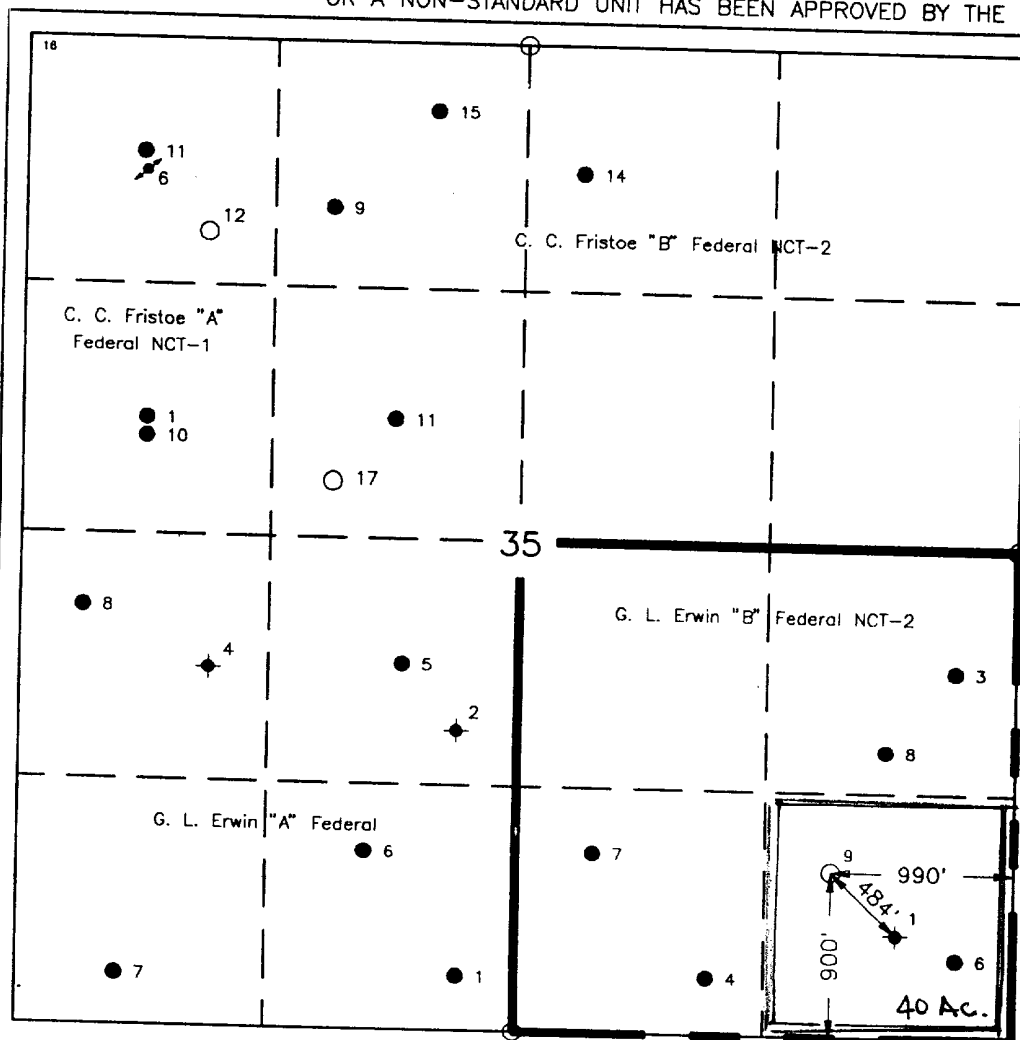
State Lease-4 copies  
Fee Lease-3 copies

WELL LOCATION AND ACREAGE DEDICATION PLAT

☐ AMENDED REPORT

<sup>1</sup> API Number 30-025-33384		<sup>2</sup> Pool Code 30202		<sup>3</sup> Pool Name Justis Blinebry & Justis Tubb Drinkard	
<sup>4</sup> Property Code 10931		<sup>5</sup> Property Name G. L. Erwin "B" Federal NCT-2			
<sup>6</sup> OGRID No. 22351		<sup>7</sup> Operator Name TEXACO EXPLORATION & PRODUCTION, INC.			
				<sup>8</sup> Well Number 9	
				<sup>9</sup> Elevation 3155'	
<sup>10</sup> Surface Location					
UL or lot no. P	Section 35	Township 24-S	Range 37-E	Lot Idn	Feet from the 900'
				North/South line South	Feet from the 990'
				East/West line East	County Lea
<sup>11</sup> Bottom Hole Location If Different From Surface					
UL or lot no.	Section	Township	Range	Lot Idn	Feet from the
				North/South line	Feet from the
				East/West line	County
<sup>12</sup> Dedicated Acres 40		<sup>13</sup> Joint or Infill		<sup>14</sup> Consolidation Code	
				<sup>15</sup> Order No.	

NO ALLOWABLE WILL BE ASSIGNED TO THIS COMPLETION UNTIL ALL INTERESTS HAVE BEEN CONSOLIDATED  
OR A NON-STANDARD UNIT HAS BEEN APPROVED BY THE DIVISION.



<sup>16</sup> OPERATOR CERTIFICATION	
I hereby certify that the information contained herein is true and complete to the best of my knowledge and belief.	
Signature	<i>C. Wade Howard</i>
Printed Name	C. Wade Howard
Position	Engineer's Assistant
Company	Texaco Expl. & Prod. Inc.
Date	March 4, 1996
<sup>17</sup> SURVEYOR CERTIFICATION	
I hereby certify that the well location shown on this plat was plotted from field notes of actual surveys made by me or under my supervision, and that the same is true and correct to the best of my knowledge and belief.	
Date Surveyed	February 5, 1996
Signature & Seal of Professional Surveyor	<i>John S. Piper</i>
Certificate No.	7254 John S. Piper
Sheet	8 of 8

○ = Staked Location    ● = Producing Well

**OPERATOR - LANDOWNER AGREEMENT**

**COMPANY:** TEXACO EXPLORATION AND PRODUCTION INC.

**PROPOSED WELL:** G. L. ERWIN "B" FEDERAL NST-2 No. 9

**FEDERAL LEASE NUMBER:** NM LC 057509

This is to advise that Texaco Exploration and Production Inc. has an agreement with:  
GEORGE WILLIS, P.O. BOX 307, JAL, NM 88252

the surface owner, concerning entry and surface restoration after completion of drilling operations at the above described well.

After abandonment of the well, all pits will be filled and levelled, and all equipment and trash will be removed from the well site. No other requirements were made concerning restoration of the well site.

3/4/96  
Date

C. Wade Howard  
C. W. Howard  
Engineer's Assistant  
Midland, Texas

## DRILLING PROGRAM

G. L. ERWIN 'B' FEDERAL NCT-2 WELL No. 9

### **SURFACE DESCRIPTION:**

See Item 11 (other information) in the attached Surface Use and Operations Plan.

**FORMATION TOPS:** Estimated KB Elevation: 3155'

<u>Formation</u>	<u>Depth</u>	<u>Lithology</u>	<u>Fluid Content</u>
Rustler	925'	Anhy, Salt	----
Tansill	2270'	Anhy, Dolo	----
Yates	2470'	Sandstone, Anhy	----
Queen	3115'	Sandstone, Anhy	----
Blinebry	5010'	Dolomite, Anhy	Oil
Tubb	5775'	Sandstone	Oil
Drinkard	5985'	Dolomite, Anhy	Oil
Abo	6205'	Dolo, Limestone	Oil

The base of the salt section is the top of the Tansill at 2270'. No abnormal pressures or temperatures are anticipated to be encountered in this well. H<sub>2</sub>S is present in the Blinebry. H<sub>2</sub>S RADIUS OF EXPOSURE: 100ppm = 26', 500ppm = 12', based on 300ppm H<sub>2</sub>S and 380 MCF (see attached H<sub>2</sub>S Drilling Operations Plan. H<sub>2</sub>S equipment to be operational prior to drilling out Surface Casing Shoe.)

### **PRESSURE CONTROL EQUIPMENT:**

A 3000 psi Dual Ram type preventer with rotating head will be used. (See Exhibit C). We do not plan to have an annular preventer. We will be able to achieve full closure of the well with the double ram preventer. It will be installed after surface casing is set. BOP will be tested each time it is installed on a casing string and at least every 29 days, and operated at least once each 24-hour period during drilling.

A PVT system will not be installed. We will be drilling thru the reserve pit and will circulate the steel pits one hour each tour to check for gains and losses and will be noted on the driller's log, which is Texaco's policy.

We do not plan to run an automatic remote-controlled choke. We will have installed and tested two manual, H<sub>2</sub>S trimmed, chokes.

**CASING AND CEMENT PROGRAM:**

The casing and cementing programs are detailed on Form 3160-3. All casing will be new.

**Centralizer Program:**

Surface Casing - Centralize the bottom 3 joints and every 4th to surface.

Production Casing - Centralize every 3rd joint on bottom 2000'.

**MUD PROGRAM:**

<u>Depth</u>	<u>Type</u>	<u>Weight</u>	<u>Viscosity</u>
0'-1000'	Fresh Water	8.4	28
1000'-4000'	Brine	10.0	29
4000'-6450'	Brine/Starch	10.0	32-36

Bottom Hole Pressure at T.D. estimated to be 6.7 PPG EMW (2247 psi).

**LOGGING, TESTING:**

GR-CNL-LDT, GR-DLL-MSFL, and GR-Sonic surveys will be run.

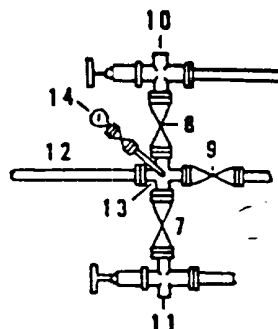
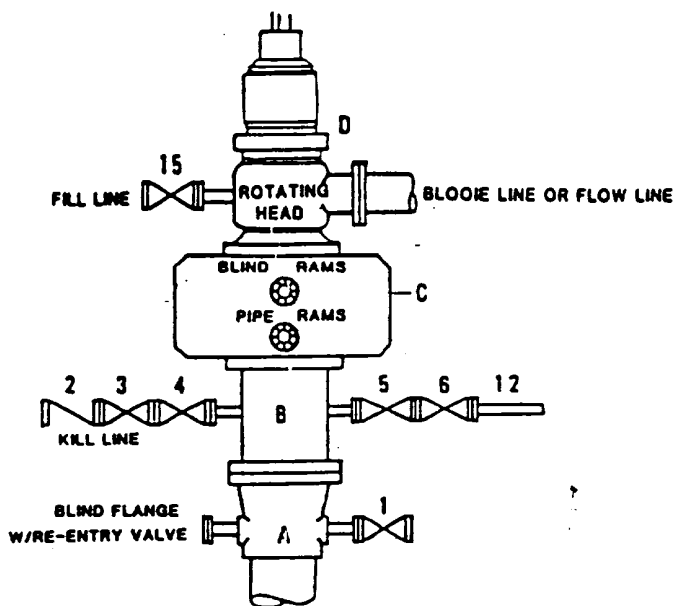
No Mud Logging Unit will be used.

No drill stem tests will be conducted.

No cores will be taken.

**DRILLING CONTROL**  
**CONDITION II-B 3000 WP**  
**FOR AIR DRILLING OR**  
**WHERE NITROGEN OR AIR BLOWS ARE EXPECTED**

H<sub>2</sub>S TRIM REQUIRED  
 YES   X   NO       



**DRILLING CONTROL**

**MATERIAL LIST - CONDITION II - B**

- |                |   |
|----------------|---|
| A              | Texaco Wellhead   |
| B              | 3000# W.P. drilling spool with a 2" minimum flanged outlet for kill line and 3" minimum flanged outlet for choke line.  |
| C              | 3000# W.P. Dual ram type preventer, hydraulic operated with 1" steel, 3000# W.P. control lines (where sub-structure height is adequate, 2 - 3000# W.P. single ram type preventers may be utilized). |
| D              | Rotating Head with fill up outlet and extended Blower Line.   |
| 1,3,4,<br>7,8, | 2" minimum 3000# W.P. flanged full opening steel gate valve, or Halliburton Lo Torc Plug valve.   |
| 2              | 2" minimum 3000# W.P. back pressure valve.  |
| 5,6,9          | 3" minimum 3000# W.P. flanged full opening steel gate valve, or Halliburton Lo Torc Plug valve.   |
| 12             | 3" minimum schedule 80, Grade "B", seamless line pipe.  |
| 13             | 2" minimum x 3" minimum 3000# W.P. flanged cross.   |
| 10,11          | 2" minimum 3000# W.P. adjustable choke bodies.  |
| 14             | Cameron Mud Gauge or equivalent ( location optional in choke line).   |
| 15             | 2" minimum 3000# W.P. flanged or threaded full opening steel gate valve, or Halliburton Lo Torc Plug valve.   |



TEXACO, INC.  
 MIDLAND DIVISION  
 MIDLAND, TEXAS



SCALE	DATE	EST NO	DRG NO
DRAWN BY			
CHECKED BY			
APPROVED BY			

EXHIBIT C