

**DISTRICT I**

P.O. Box 1980, Hobbs, NM 88241-1980

**DISTRICT II**

P.O. Box Drawer DD, Artesia, NM 88211-0719

**DISTRICT III**

1000 Rio Brazos Rd., Aztec, NM 87410

**DISTRICT IV**

P.O. Box 2088, Santa Fe, NM 87504-2088

## State of New Mexico

Energy, Minerals and Natural Resources Department

**OIL CONSERVATION DIVISION**

P.O. Box 2088

Santa Fe, New Mexico 87504-2088

Form C-101

Revised February 10, 1994

Instructions on back

Submit to Appropriate District Office

State Lease - 6 Copies

Fee Lease - 5 Copies

☐ AMENDED REPORT**APPLICATION FOR PERMIT TO DRILL, RE-ENTER, DEEPEN, PLUGBACK, OR ADD A ZONE**

<sup>1</sup> Operator Name and Address TEXACO EXPLORATION & PRODUCTION INC. P.O. Box 3109, Midland Texas 79702		<sup>2</sup> OGRID Number 022351
		<sup>3</sup> API Number 30-025-33401
<sup>4</sup> Property Code 10926	<sup>5</sup> Property Name WEST DOLLARHIDE DRINKARD UNIT	<sup>6</sup> Well No. 153

**<sup>7</sup> Surface Location**

UI or lot no.	Section	Township	Range	Lot.Idn	Feet From The	North/South Line	Feet From The	East/West Line	County
M	33	24-S	38-E		1150	SOUTH	800	WEST	LEA

**<sup>8</sup> Proposed Bottom Hole Location If Different From Surface**

UI or lot no.	Section	Township	Range	Lot.Idn	Feet From The	North/South Line	Feet From The	East/West Line	County
<sup>9</sup> Proposed Pool 1 DOLLARHIDE TUBB DRINKARD					<sup>10</sup> Proposed Pool 2				

<sup>11</sup> Work Type Code N	<sup>12</sup> Well Type Code O	<sup>13</sup> Rotary or C.T. ROTARY	<sup>14</sup> Lease Type Code S	<sup>15</sup> Ground Level Elevation 3177'
<sup>16</sup> Multiple No	<sup>17</sup> Proposed Depth 7200'	<sup>18</sup> Formation TUBB DRINKARD	<sup>19</sup> Contractor NABORS	<sup>20</sup> Spud Date 6/1/96

**<sup>21</sup> Proposed Casing and Cement Program**

SIZE OF HOLE	SIZE OF CASING	WEIGHT PER FOOT	SETTING DEPTH	SACKS OF CEMENT	EST. TOP
11	8 5/8	24#	1165'	525 SACKS	SURFACE
7 7/8	5 1/2	15.5 & 17#	7200'	2000 SACKS	SURFACE
Permit Expires 1 Year From Approval Date Unless Drilling Underway					

<sup>22</sup> Describe the proposed program. If this application is to DEEPEN or PLUG BACK give the data on the present productive zone and proposed new productive zone. Describe the blowout prevention program, if any. Use additional sheets if necessary.

**CEMENTING PROGRAM:**

SURFACE CASING - 325 SACKS CLASS C W/ 4% GEL, 2% CACL<sub>2</sub> (13.5 PPG, 1.74 CF/S, 9.11 GW/S). F/B 200 SACKS CLASS C W/ 1% CACL<sub>2</sub> (14.8 PPG, 1.32 CF/S, 6.3 GW/S).

PRODUCTION CASING - 1500 SACKS 35/65 POZ CLASS H W/ 6% GEL, 5% SALT, 1/4# FLOCELE (12.8 PPG, 1.94 CF/S, 10.5 GW/S). F/B 500 SACKS CLASS H (15.6 PPG, 1.18 CF/S, 5.2 GW/S).

ARCH PET. OPERATES A WELL IN THIS QUARTER QUARTER SECTION AND HAS BEEN FURNISHED A COPY OF THIS APPLICATION.

UNORTHODOX LOCATION: DISTRICT APPROVAL REQUESTED PER RULE 104.F.(1) FOR EFFICIENT PRODUCTION PATTERN.

<sup>23</sup> I hereby certify that the rules and regulations of the Oil Conservation Division have been complied with and that the information given above is true and complete to the best of my knowledge and belief.

Signature

*C. Wade Howard*

Printed Name

C. Wade Howard

Title Eng. Assistant

Date 4/25/96

Telephone 688-4606

**OIL CONSERVATION DIVISION**

Approved By:

*C. Wade Howard*

Title:

Approval Date APR 29 1996

Expiration Date:

Conditions of Approval:

Attached ☐

DISTRICT I  
P.O. Box 1980, Hobbs, NM 88240  
DISTRICT II  
P.O. Drawer DD, Artesia, NM 88210  
DISTRICT III  
1000 Rio Brazos Rd., Aztec, NM 87410  
DISTRICT IV  
P.O. Box 2089, Santa Fe, NM 87504-2089

State of New Mexico  
Energy, Minerals and Natural Resources Department

OIL CONSERVATION DIVISION  
P.O. Box 2088  
Santa Fe, New Mexico 87504-2088

Form C-102  
Revised February 10, 1994  
Instructions on back  
Submit to Appropriate District Office  
State Lease - 4 Copies  
Fee Lease - 3 Copies

☐ AMENDED REPORT

WELL LOCATION AND ACREAGE DEDICATION PLAT

API Number <b>30-025-33401</b>	Pool Code <b>18830</b>	Pool Name <b>DOLARHIDE TUBB DRINKARD</b>
Property Code <b>10926</b>	Property Name <b>WEST DOLLARHIDE DRINKARD UNIT</b>	Well Number <b>#153</b>
OGRID No. <b>22351</b>	Operator Name <b>TEXACO EXPLORATION &amp; PRODUCTION INC.</b>	Elevation <b>3177'</b>

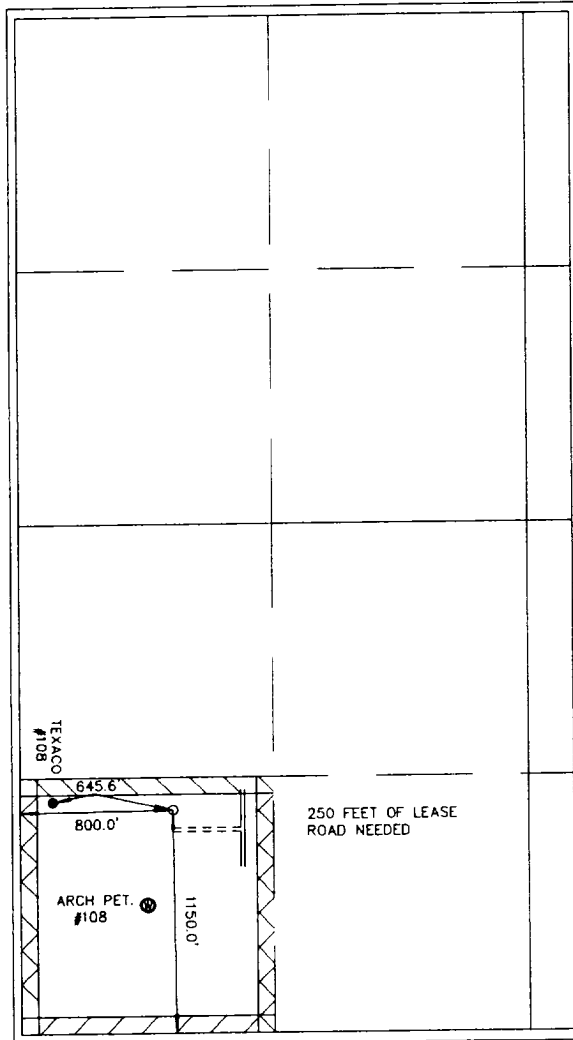
Surface Location

UL or lot no.	Section	Township	Range	Lot Idn	Feet from the	North/South line	Feet from the	East/West line	County
M	33	24-S	38-E		1150.0	SOUTH	800.0	WEST	LEA

Bottom Hole Location If Different From Surface

UL or lot no.	Section	Township	Range	Lot Idn	Feet from the	North/South line	Feet from the	East/West line	County
Dedicated Acres <b>40</b>	Joint or Infill	Consolidation Code	Order No.						

NO ALLOWABLE WILL BE ASSIGNED TO THIS COMPLETION UNTIL ALL INTERESTS HAVE BEEN CONSOLIDATED  
OR A NON-STANDARD UNIT HAS BEEN APPROVED BY THE DIVISION



OPERATOR CERTIFICATION

I hereby certify the the information  
contained herein is true and complete to the  
best of my knowledge and belief.

Signature

*C. Wade Howard*

Printed Name

C. WADE HOWARD

Position

ASSISTANT ENGINEERING TECHNICIAN

Company

TEXACO EXPLOR. & PROD. INC.

Date

04-18-96

SURVEYOR CERTIFICATION

I hereby certify that the well location shown  
on this plat was plotted from field notes of  
actual surveys made by me or under my  
supervision, and that the same is true and  
correct to the best of my knowledge and  
belief.

Date Surveyed

04-18-96

Signature & Seal of  
Professional Surveyor

*Richard B. Dumas*

Certificate No.

4882