

## DISTRICT I

P.O. Box 1980, Hobbs, NM 88241-1980

## DISTRICT II

P.O. Box Drawer DD, Artesia, NM 88211-0719

## DISTRICT III

1000 Rio Brazos Rd., Aztec, NM 87410

## DISTRICT IV

P.O. Box 2088, Santa Fe, NM 87504-2088

State of New Mexico

Energy, Minerals and Natural Resources Department

Form C-101

Revised February 10, 1999

Instructions on back

Submit to Appropriate District Office

State Lease - 6 Copies

Fee Lease - 5 Copies

☐ AMENDED REPORT

## OIL CONSERVATION DIVISION

P.O. Box 2088

Santa Fe, New Mexico 87504-2088

## APPLICATION FOR PERMIT TO DRILL, RE-ENTER, DEEPEN, PLUGBACK, OR ADD A ZONE

<sup>1</sup> Operator Name and Address TEXACO EXPLORATION & PRODUCTION INC. 15 SMITH ROAD, MIDLAND, TX 79705		<sup>2</sup> OGRID Number 022351
		<sup>3</sup> API Number 30-025-33403
<sup>4</sup> Property Code 10926	<sup>5</sup> Property Name WEST DOLLARHIDE DRINKARD UNIT	
		<sup>6</sup> Well No. 155

<sup>7</sup> Surface Location

UI or lot no.	Section	Township	Range	Lot.Idn	Feet From The	North/South Line	Feet From The	East/West Line	County
J	32	24-S	38-E		2000	SOUTH	2550	EAST	LEA

<sup>8</sup> Proposed Bottom Hole Location If Different From Surface

UI or lot no.	Section	Township	Range	Lot.Idn	Feet From The	North/South Line	Feet From The	East/West Line	County
L	33	24-S	38-E		1700	SOUTH	210	WEST	LEA

<sup>9</sup> Proposed Pool 1

DOLLARHIDE TUBB DRINKARD

<sup>10</sup> Proposed Pool 2

<sup>11</sup> Work Type Code P <i>Horizontal</i>	<sup>12</sup> Well Type Code O	<sup>13</sup> Rotary or C.T. ROTARY	<sup>14</sup> Lease Type Code S	<sup>15</sup> Ground Level Elevation 3192'
<sup>16</sup> Multiple No	<sup>17</sup> Proposed Depth 9178'	<sup>18</sup> Formation DRINKARD	<sup>19</sup> Contractor	<sup>20</sup> Spud Date 8/10/2002

<sup>21</sup> Proposed Casing and Cement Program

SIZE OF HOLE	SIZE OF CASING	WEIGHT PER FOOT	SETTING DEPTH	SACKS OF CEMENT	EST. TOP
11	8 5/8	24#	1190'	525 SACKS	SURFACE
7 7/8	5 1/2	15.5 & 17#	7250'	1820 SACKS	SURFACE

<sup>22</sup> Describe the proposed program. If this application is to DEEPEN or PLUG BACK give the data on the present productive zone and proposed new productive zone. Describe the blowout prevention program, if any. Use additional sheets if necessary.

TEXACO E&amp;P INTENDS TO DRILL A HORIZONTAL LATERAL IN THE SUBJECT WELL

KICK OFF POINT - 6328'

TOP OF WINDOW - 6323'

BOTTOM OF WINDOW - 6333'

Permit Expires 1 Year From Approval  
Date Unless Drilling Underway

*Horizontal*

RECEIVED  
Hobbs  
OCD

<sup>23</sup> I hereby certify that the rules and regulations of the Oil Conservation Division have been complied with and that the information given above is true and complete to the best of my knowledge and belief.

Signature *J. Denise Leake*

Printed Name J. Denise Leake

Title Regulatory Specialist

Date 5/22/2002

Telephone 915-687-7375

## OIL CONSERVATION DIVISION

Approved By:

Title:

Approval Date JUN 06 2002

Expiration Date:

Conditions of Approval:

Attached ☐

ORIGINAL SIGNED BY  
PAUL F. KAUTZ  
PETROLEUM ENGINEER

**DISTRICT I**

P.O. Box 1980, Hobbs, NM 88241-1980

**DISTRICT II**

P.O. Box Drawer DD, Artesia, NM 88211-0719

**DISTRICT III**

1000 Rio Brazos Rd., Aztec, NM 87410

**DISTRICT IV**

P.O. Box 2088, Santa Fe, NM 87504-2088

State of New Mexico  
Energy, Minerals and Natural Resources Department**OIL CONSERVATION DIVISION**

P.O. Box 2088

Santa Fe, New Mexico 87504-2088

Form C-102

Revised February 10, 1999

Instructions on back

Submit to Appropriate District Office

State Lease - 4 Copies

Fee Lease - 3 Copies

☐ AMENDED REPORT**WELL LOCATION AND ACREAGE DEDICATION PLAT**

<sup>1</sup> API Number 30-025-33403		<sup>2</sup> Pool Code 18830		<sup>3</sup> Pool Name DOLLARHIDE; TUBB-DRINKARD	
<sup>4</sup> Property Code 10926		<sup>5</sup> Property Name WEST DOLLARHIDE DRINKARD UNIT			<sup>6</sup> Well No. 155
<sup>7</sup> OGRID Number 022351		<sup>8</sup> Operator Name TEXACO EXPLORATION & PRODUCTION INC.			<sup>9</sup> Elevation 3192'

<sup>10</sup> Surface Location

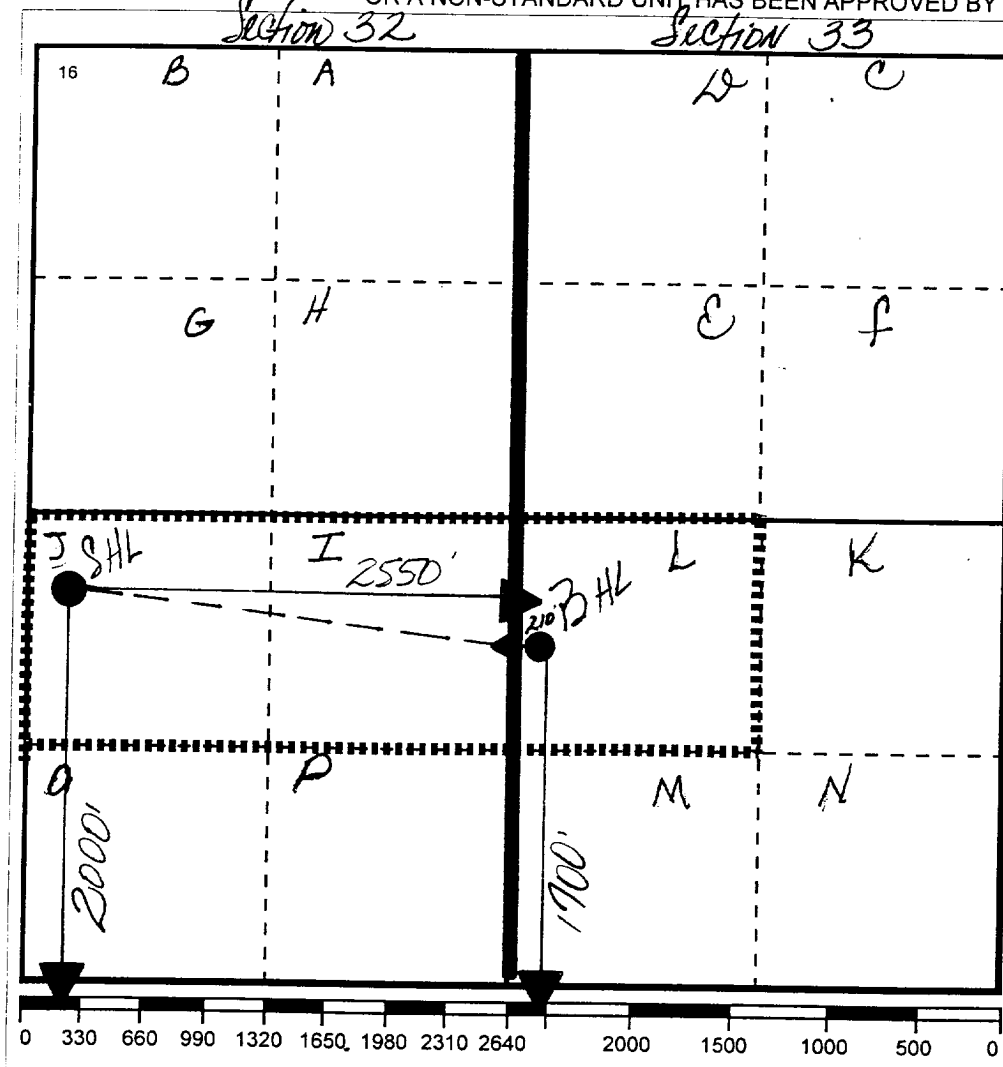
UI or lot no	Section	Township	Range	Lot.Idn	Feet From The	North/South Line	Feet From The	East/West Line	County
J	32	24-S	38-E		2000	SOUTH	2550	EAST	LEA

<sup>11</sup> Bottom Hole Location If Different From Surface

UI or lot no.	Section	Township	Range	Lot.Idn	Feet From The	North/South Line	Feet From The	East/West Line	County
L	33	24-S	38-E		1700	SOUTH	210	WEST	LEA

<sup>12</sup> Dedicated Acre 120	<sup>13</sup> Joint or Infill No	<sup>14</sup> Consolidation Code	<sup>15</sup> Order No.
-------------------------------------	-------------------------------------	----------------------------------	-------------------------

NO ALLOWABLE WILL BE ASSIGNED TO THIS COMPLETION UNTIL ALL INTERESTS HAVE BEEN CONSOLIDATED  
OR A NON-STANDARD UNIT HAS BEEN APPROVED BY THE DIVISION

<sup>17</sup> OPERATOR CERTIFICATION

I hereby certify that the information  
contained herein is true and complete to the  
best of my knowledge and belief

Signature

Printed Name

J. Denise Leake

Position

Regulatory Specialist

Date

5/22/2002

<sup>18</sup> SURVEYOR CERTIFICATION

I hereby certify that the well location shown  
on this plat was plotted from field notes of  
actual surveys made by me or under my  
supervision, and that the same is true and  
correct to the best of my knowledge and  
belief.

Date Surveyed

Signature &amp; Seal of

Professional Surveyor

Certificate No.