

DISTRICT I  
P. O. Box 1980, Hobbs, NM 88240

DISTRICT II  
P. O. Drawer DD, Artesia, NM 88210

DISTRICT III  
1000 Rio Brazos Rd., Aztec, NM 87410

DISTRICT IV  
P. O. Box 2088, Santa Fe, NM 87504-2088

State of New Mexico  
Energy, Minerals and Natural Resources Department

OIL CONSERVATION DIVISION

PO Box 2088  
Santa Fe, NM 87504-2088

Form C-102  
Revised February 10, 1994

Instructions on back

Submit to Appropriate District Office

State Lease-4 copies

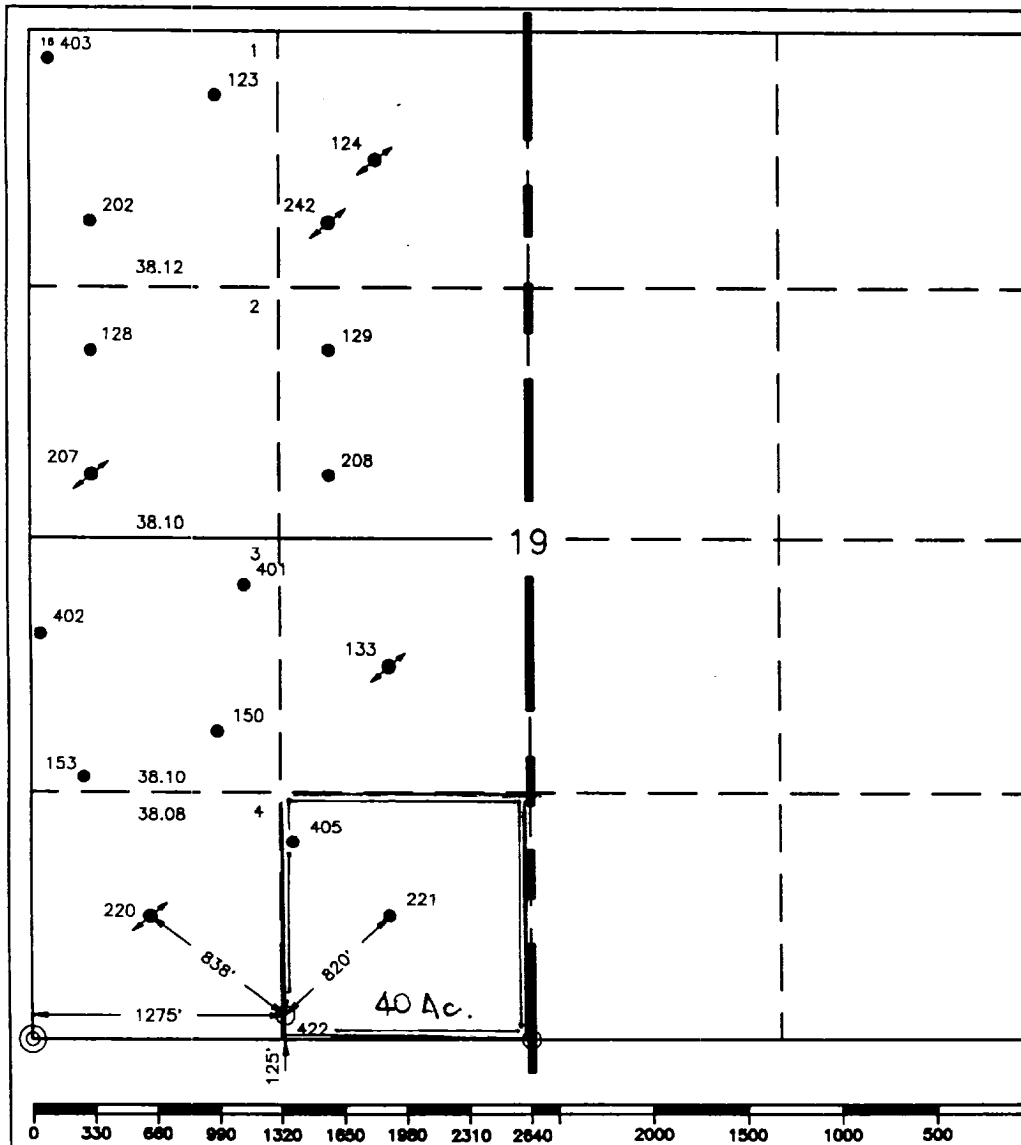
Fee Lease-3 copies

WELL LOCATION AND ACREAGE DEDICATION PLAT

☐ AMENDED REPORT

<sup>1</sup> API Number 31 12E 33492		<sup>2</sup> Pool Code 3582/5144		<sup>3</sup> Pool Name Jalmat/Langlie Mattix					
<sup>4</sup> Property Code 10917		<sup>5</sup> Property Name Cooper Jal Unit			<sup>6</sup> Well Number 422				
<sup>7</sup> OGRID No. 22351		<sup>8</sup> Operator Name TEXACO EXPLORATION & PRODUCTION, INC.			<sup>9</sup> Elevation 3276'				
<sup>10</sup> Surface Location									
UL or lot no. N	Section 19	Township 24-S	Range 37-E	Lot Idn	Feet from the 125'	North/South line South	Feet from the 1275'	East/West line West	County Lea
<sup>11</sup> Bottom Hole Location If Different From Surface									
UL or lot no.	Section	Township	Range	Lot Idn	Feet from the	North/South line	Feet from the	East/West line	County
<sup>12</sup> Dedicated Acres 40		<sup>13</sup> Joint or Infill		<sup>14</sup> Consolidation Code		<sup>15</sup> Order No.			

NO ALLOWABLE WILL BE ASSIGNED TO THIS COMPLETION UNTIL ALL INTERESTS HAVE BEEN CONSOLIDATED  
OR A NON-STANDARD UNIT HAS BEEN APPROVED BY THE DIVISION.



<sup>16</sup> OPERATOR CERTIFICATION	
I hereby certify that the information contained herein is true and complete to the best of my knowledge and belief.	
Signature C. Wade Howard	
Printed Name C. Wade Howard	
Position Engineer's Assistant	
Company Texaco Expl. & Prod. Inc.	
Date May 15, 1996	
<sup>17</sup> SURVEYOR CERTIFICATION	
I hereby certify that the well location shown on this plat was plotted from field notes of actual surveys made by me or under my supervision, and that the same is true and correct to the best of my knowledge and belief.	
Date Surveyed May 7, 1996	
Signature & Seal of Professional Surveyor 	
Certificate No. 7254 John S. Piper	
Sheet 8 of 8	