

DISTRICT I
P. O. Box 1980
Hobbs, NM 88241-1980

DISTRICT II
P. O. Drawer DD
Artesia, NM 88211-0719

DISTRICT III
1000 Rio Brazos Rd.
Aztec, NM 87410

DISTRICT IV
P. O. Box 2088
Santa Fe, NM 87507-2088

State of New Mexico
Energy, Minerals, and Natural Resources Department

Form C-102
Revised 02-10-94

Instructions on back

Submit to the Appropriate
District Office
State Lease - 4 copies
Fee Lease - 3 copies

OIL CONSERVATION DIVISION
P. O. Box 2088
Santa Fe, New Mexico 87504-2088

☐ AMENDED REPORT

WELL LOCATION AND ACREAGE DEDICATION PLAT

¹ API Number 30-025-33507		² Pool Code 34200	³ Pool Name Justis Blinebry
⁴ Property Code 18949	⁵ Property Name EX HALE STATE		⁶ Well Number 6
⁷ OGRID No. 154303	⁸ Operator Name PRIMAL ENERGY CORPORATION		⁹ Elevation 3169'

¹⁰ SURFACE LOCATION

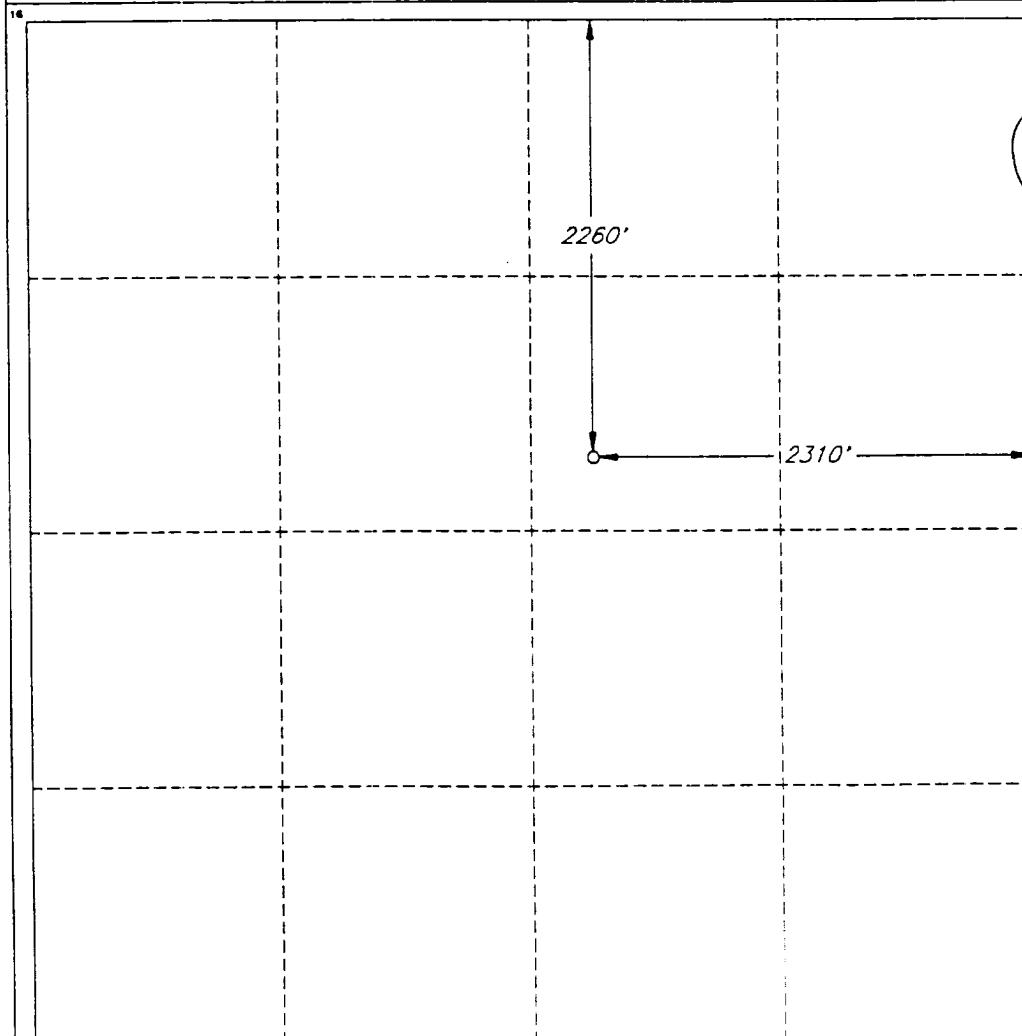
UL or lot no.	Section	Township	Range	Lot Ida	Feet from the	North/South line	Feet from the	East/West line	County
G	2	25 SOUTH	37 EAST, N.M.P.M.		2260'	NORTH	2310'	EAST	LEA

"BOTTOM HOLE LOCATION IF DIFFERENT FROM SURFACE

UL or lot no.	Section	Township	Range	Lot Ida	Feet from the	North/South line	Feet from the	East/West line	County

¹² Dedicated Acres 40	¹³ Joint or Infill	¹⁴ Consolidation Code	¹⁵ Order No.
--	-------------------------------	----------------------------------	-------------------------

NO ALLOWABLE WELL BE ASSIGNED TO THIS COMPLETION UNTIL ALL INTERESTS HAVE BEEN CONSOLIDATED OR A NON-STANDARD UNIT HAS BEEN APPROVED BY THE DIVISION



OPERATOR CERTIFICATION

I hereby certify that the information contained herein is true and complete to the best of my knowledge and belief.

Signature

Printed Name

John Abernethy
Title
Manager, Oper. & Eng.

Date
July 3, 1996

SURVEYOR CERTIFICATION

I hereby certify that the well location shown on this plat was plotted from field notes of actual surveys made by me or under my supervision, and that the same is true and correct to the best of my belief.

Date of Survey
JUNE 27 1996

Signature of Professional Surveyor

V. LYNN BEZNER
NO. 7920

Certification
V. L. BEZNER R.S. #7920

JOB #46136 / 20 NW / V.H.B.