

DISTRICT I  
P. O. Box 1980  
Hobbs, NM 88241-1980

DISTRICT II  
P. O. Drawer DD  
Artesia, NM 88211-0719

DISTRICT III  
1000 Rio Brazos Rd.  
Aztec, NM 87410

DISTRICT IV  
P. O. Box 2088  
Santa Fe, NM 87507-2088

State of New Mexico  
Geology, Minerals, and Natural Resources Department

Form C-10  
Revised 02-10-96

Instructions on back

Submit to the Appropriate  
District Office  
State Lease - 4 copies  
Fee Lease - 3 copies

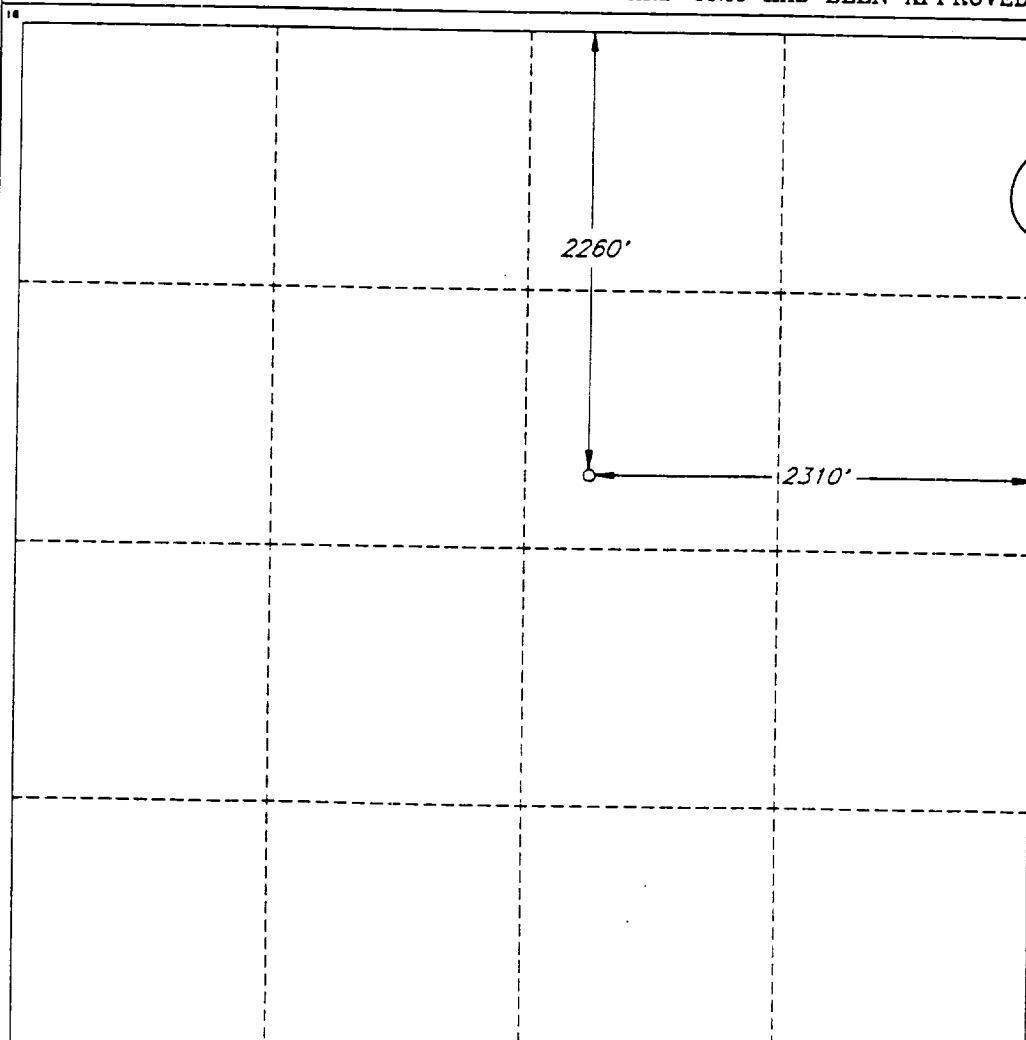
**OIL CONSERVATION DIVISION**  
P. O. Box 2088  
Santa Fe, New Mexico 87504-2088

☐ AMENDED REPORT

**WELL LOCATION AND ACREAGE DEDICATION PLAT**

1 API Number <b>30-025-33507</b>		2 Pool Code <b>35280</b>		3 Pool Name <b>Justis Tubb Drinkard</b>					
4 Property Code <b>18949</b>		5 Property Name <b>HALE STATE</b>						6 Well Number <b>6</b>	
7 GRID No. <b>154303</b>		8 Operator Name <b>PRIMAL ENERGY CORPORATION</b>						9 Elevation <b>3169'</b>	
10 SURFACE LOCATION									
UL or lot no. <b>G</b>	Section <b>2</b>	Township <b>25 SOUTH</b>	Range <b>37 EAST, N.M.P.M.</b>	Lot Ida	Feet from the <b>2260'</b>	North/South line <b>NORTH</b>	Feet from the <b>2310'</b>	East/West line <b>EAST</b>	County <b>LEA</b>
11 BOTTOM HOLE LOCATION IF DIFFERENT FROM SURFACE									
UL or lot no.	Section	Township	Range	Lot Ida	Feet from the	North/South line	Feet from the	East/West line	County
12 Dedicated Acres <b>40</b>		13 Joint or Infill		14 Consolidation Code		15 Order No.			

NO ALLOWABLE WELL BE ASSIGNED TO THIS COMPLETION UNTIL ALL INTERESTS HAVE BEEN CONSOLIDATED OR A NON-STANDARD UNIT HAS BEEN APPROVED BY THE DIVISION



**OPERATOR CERTIFICATION**

I hereby certify that the information contained herein is true and complete to the best of my knowledge and belief.

Signature

Printed Name

**John Abernethy**

Title

**Manager, Oper. & Eng.**

Date

**July 3, 1996**

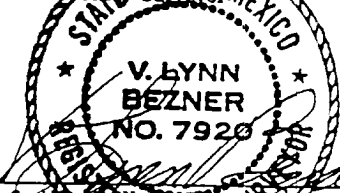
**SURVEYOR CERTIFICATION**

I hereby certify that the well location shown on this plat was plotted from field notes of actual surveys made by me or under my supervision, and that the same is true and correct to the best of my belief.

Date of Survey

**JUNE 27, 1996**

Signature and Seal of  
Professional Surveyor



Certified by  
**V. L. BEZNER** R.S. #7920