

DISTRICT I
P. O. Box 1980
Hobbs, NM 88241-1980

State of New Mexico
Energy, Minerals, and Natural Resources Department

Form C-102
Revised 02-10-94
Instructions on back

DISTRICT II
P. O. Drawer DD
Artesia, NM 88211-0719

DISTRICT III
1000 Rio Brazos Rd.
Aztec, NM 87410

DISTRICT IV
P. O. Box 2088
Santa Fe, NM 87507-2088

OIL CONSERVATION DIVISION
P. O. Box 2088
Santa Fe, New Mexico 87504-2088

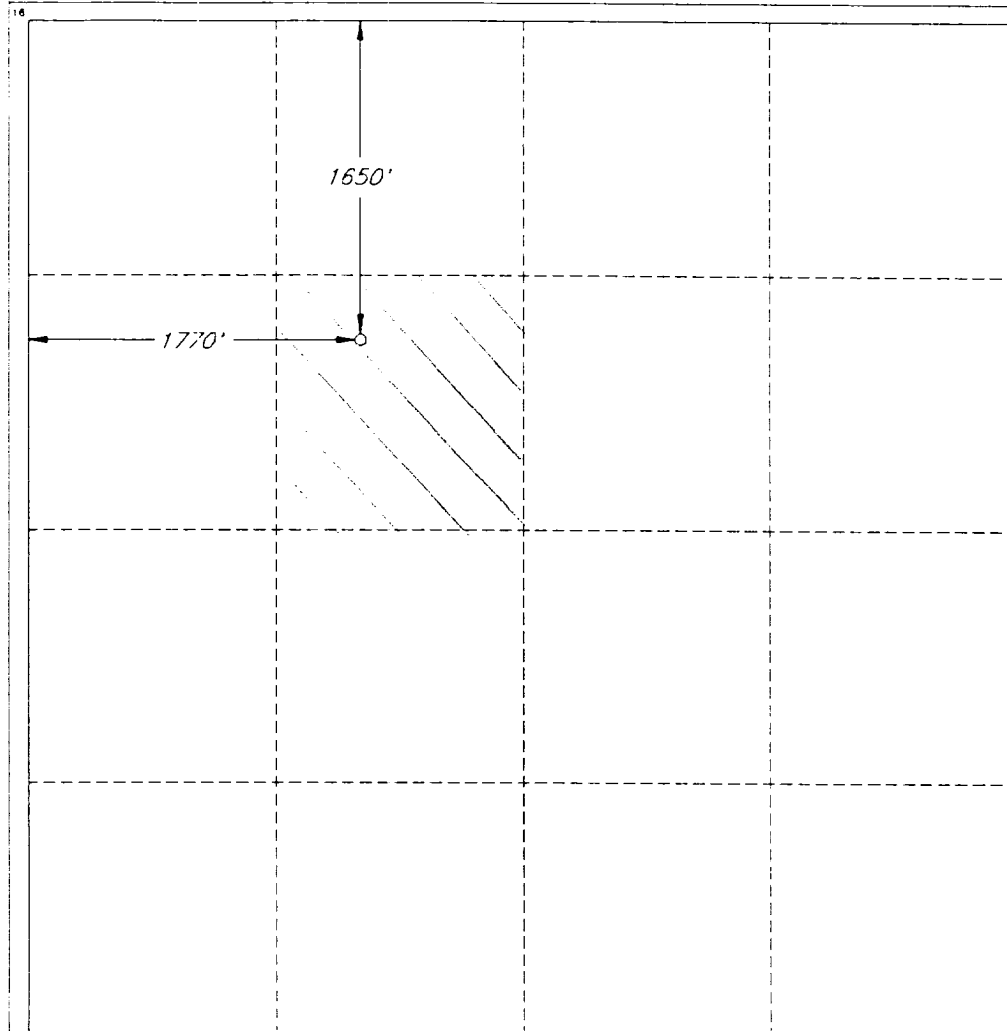
Submit to the Appropriate
District Office
State Lease - 4 copies
Fee Lease - 3 copies

☒ AMENDED REPORT

WELL LOCATION AND ACREAGE DEDICATION PLAT

1 API Number		2 Pool Code 26500		3 Pool Name East Fowler (Ellenburger)					
4 Property Code		5 Property Name GREENBACK STATE						6 Well Number 2	
7 OGRID No. 7377		8 Operator Name ENRON OIL & GAS COMPANY						9 Elevation 3215'	
10 SURFACE LOCATION									
UL or lot no. F	Section 17	Township 24 SOUTH	Range 38 EAST, N.M.P.M.	Lot Ida	Feet from the 1650'	North/South line NORTH	Feet from the 1770'	East/West line WEST	County LEA
11 BOTTOM HOLE LOCATION IF DIFFERENT FROM SURFACE									
UL or lot no.	Section	Township	Range	Lot Ida	Feet from the	North/South line	Feet from the	East/West line	County
12 Dedicated Acres 40		13 Joint or Infill		14 Consolidation Code		15 Order No.			

NO ALLOWABLE WELL BE ASSIGNED TO THIS COMPLETION UNTIL ALL INTERESTS HAVE BEEN
CONSOLIDATED OR A NON-STANDARD UNIT HAS BEEN APPROVED BY THE DIVISION



OPERATOR CERTIFICATION

I hereby certify that the information
contained herein is true and complete
to the best of my knowledge and belief.

Signature
Betty Gildon
Printed Name
Betty Gildon
Title
Regulatory Analyst
Date
9/27/96

SURVEYOR CERTIFICATION

I hereby certify that the well
location shown on this plat was
plotted from field notes of actual
surveys made by me or under
my supervision, and that the
same is true and correct to the
best of my belief.

Date of Survey
SEPTEMBER 27, 1996

Signature and Seal of
Professional Surveyor

Certified
V. LYNN BEZNER
#7920
JOB #47088 / 20-01 / V.H.B.