

DISTRICT I  
P. O. Box 1980, Hobbs, NM 88240

DISTRICT II  
P. O. Drawer DD, Artesia, NM 88210

DISTRICT III  
1000 Rio Brazos Rd., Aztec, NM 87410

DISTRICT IV  
P. O. Box 2088, Santa Fe, NM 87504-2088

State of New Mexico  
Energy, Minerals and Natural Resources Department

OIL CONSERVATION DIVISION

P.O. Box 2088  
Santa Fe, NM 87504-2088

Form C-102  
Revised February 10, 1994

Instructions on back

Submit to Appropriate District Office

State Lease-4 copies  
Fee Lease-3 copies

☐ AMENDED REPORT

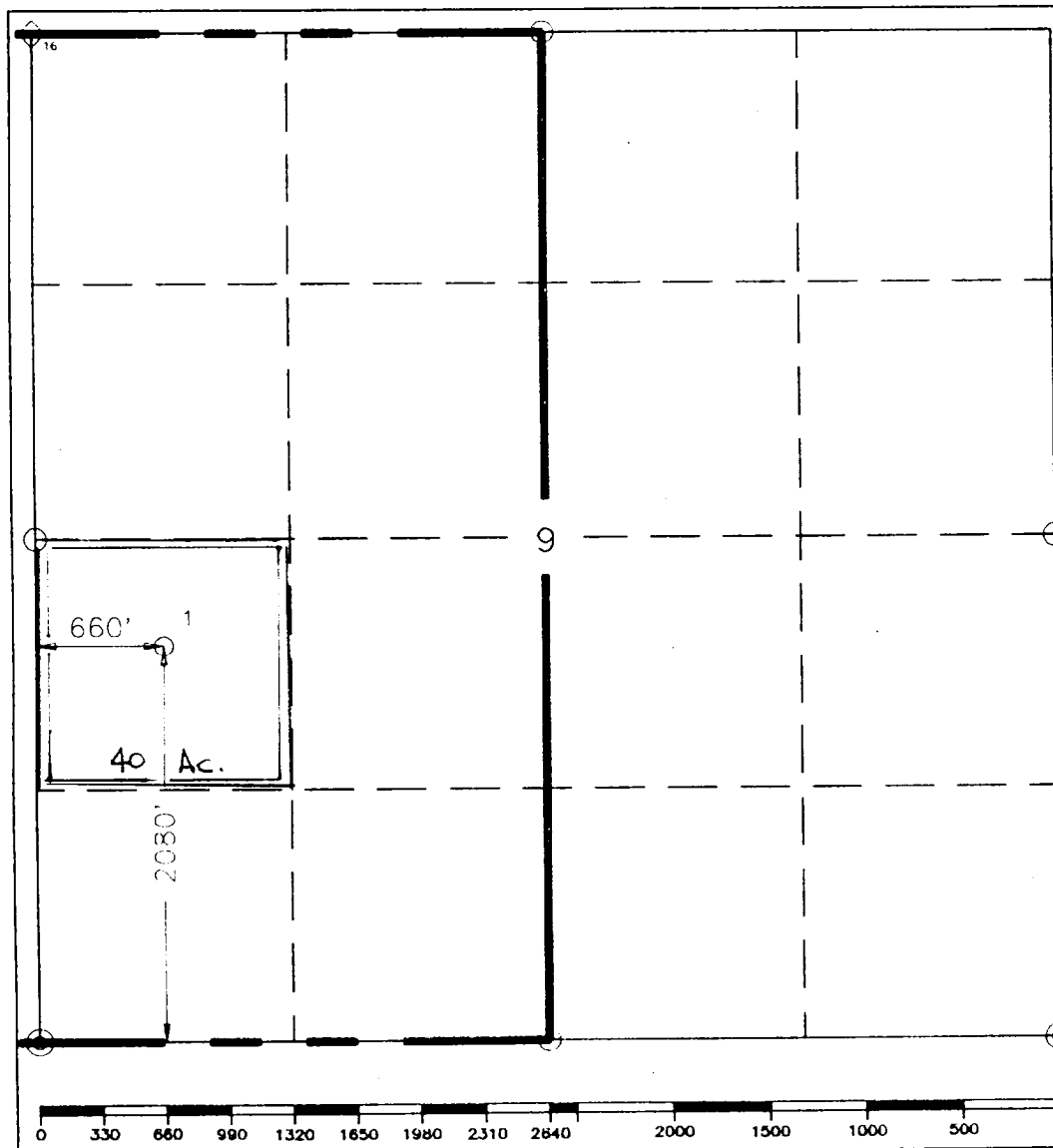
WELL LOCATION AND ACREAGE DEDICATION PLAT

|   |   |                             |   |
|---|---|-----------------------------|---|
| <sup>1</sup> API Number<br>30-025-33705 |   | <sup>2</sup> Pool Code<br>✓ | <sup>3</sup> Pool Name<br>Wildcat, Delaware/ Bone Springs |
| <sup>4</sup> Property Code<br>20023     | <sup>5</sup> Property Name<br>Cotton Draw 9L Federal                |                             | <sup>6</sup> Well Number<br>1                             |
| <sup>7</sup> GRID No.<br>22351          | <sup>8</sup> Operator Name<br>TEXACO EXPLORATION & PRODUCTION, INC. |                             | <sup>9</sup> Elevation<br>3431'                           |

| <sup>10</sup> Surface Location |              |                  |               |         |                        |                           |                       |                        |                            |
|--------------------------------|--------------|------------------|---------------|---------|------------------------|---------------------------|-----------------------|------------------------|----------------------------|
| UL or lot no.<br>L             | Section<br>9 | Township<br>25-S | Range<br>32-E | Lot Idn | Feet from the<br>2080' | North/South line<br>South | Feet from the<br>660' | East/West line<br>West | <sup>7</sup> County<br>Lea |

| <sup>11</sup> Bottom Hole Location If Different From Surface |         |                               |       |                                  |               |                         |               |                |                     |
|--|---------|-------------------------------|-------|----------------------------------|---------------|-------------------------|---------------|----------------|---------------------|
| UL or lot no.  | Section | Township                      | Range | Lot Idn                          | Feet from the | North/South line        | Feet from the | East/West line | <sup>7</sup> County |
| <sup>12</sup> Dedicated Acres<br>40                          |         | <sup>13</sup> Joint or Infill |       | <sup>14</sup> Consolidation Code |               | <sup>15</sup> Order No. |               |                |                     |

NO ALLOWABLE WILL BE ASSIGNED TO THIS COMPLETION UNTIL ALL INTERESTS HAVE BEEN CONSOLIDATED  
OR A NON-STANDARD UNIT HAS BEEN APPROVED BY THE DIVISION.



|   |                                |
|---|--------------------------------|
| <sup>16</sup> OPERATOR CERTIFICATION<br>I hereby certify that the information contained herein is true and complete to the best of my knowledge and belief.   |                                |
| Signature<br><i>C. Wade Howard</i>  | Printed Name<br>C. Wade Howard |
| Position<br>Engineer's Assistant  |                                |
| Company<br>Texaco Expl. & Prod. Inc.  |                                |
| Date<br>October 23, 1996  |                                |
| <sup>17</sup> SURVEYOR CERTIFICATION<br>I hereby certify that the well location shown on this plat was plotted from field notes of actual surveys made by me or under my supervision, and that the same is true and correct to the best of my knowledge and belief. |                                |
| Date Surveyed<br>October 16, 1996   |                                |
| Signature & Seal of Professional Surveyor<br><i>John S. Piper</i>   |                                |
| Certificate No.<br>7254 John S. Piper   |                                |
| Sheet   |                                |