

## DISTRICT I

P.O. Box 1980, Hobbs, NM 88241-1980

## DISTRICT II

P.O. Box Drawer DC, Artesia, NM 88211-0719

## DISTRICT III

1000 Rio Brazos Rd., Aztec, NM 87410

## DISTRICT IV

P.O. Box 2088, Santa Fe, NM 87504-2088

## State of New Mexico

Energy, Minerals and Natural Resources Department

## OIL CONSERVATION DIVISION

P.O. Box 2088

Santa Fe, New Mexico 87504-2088

Form C-101

Revised February 10, 1994

Instructions on back

Submit to Appropriate District Office

State Lease - 6 Copies

Fee Lease - 5 Copies

☐ AMENDED REPORT

## APPLICATION FOR PERMIT TO DRILL, RE-ENTER, DEEPEN, PLUGBACK, OR ADD A ZONE:

<sup>1</sup> Operator Name and Address TEXACO EXPLORATION & PRODUCTION INC. P.O. Box 3109, Midland Texas 79702		<sup>2</sup> OGRID Number 022351
		<sup>3</sup> API Number 38-025-33725
<sup>4</sup> Property Code 11105	<sup>5</sup> Property Name STATE 'L'	<sup>6</sup> Well No. 6

<sup>7</sup> Surface Location

UI or lot no.	Section	Township	Range	Lot.Idn	Feet From The	North/South Line	Feet From The	East/West Line	County
E	2	25-S	37-E		2310	NORTH	450	WEST	

<sup>8</sup> Proposed Bottom Hole Location If Different From Surface

UI or lot no.	Section	Township	Range	Lot.Idn	Feet From The	North/South Line	Feet From The	East/West Line	County
<sup>9</sup> Proposed Pool 1 JUSTIS BLINEBRY					<sup>10</sup> Proposed Pool 2 JUSTIS TUBB DRINKARD				

<sup>11</sup> Work Type Code N	<sup>12</sup> Well Type Code O	<sup>13</sup> Rotary or C.T. ROTARY	<sup>14</sup> Lease Type Code S	<sup>15</sup> Ground Level Elevation 3171'
<sup>16</sup> Multiple No	<sup>17</sup> Proposed Depth 6650'	<sup>18</sup> Formation BLINEBRY/TUBB DRKD	<sup>19</sup> Contractor NABORS	<sup>20</sup> Spud Date 1/10/97

<sup>21</sup> Proposed Casing and Cement Program

SIZE OF HOLE	SIZE OF CASING	WEIGHT PER FOOT	SETTING DEPTH	SACKS OF CEMENT	EST. TOP
11	8 5/8	24#	1000'	525 SACKS	SURFACE
7 7/8	5 1/2	15.5 & 17#	6650'	1500 SACKS	SURFACE

<sup>22</sup> Describe the proposed program. If this application is to DEEPEN or PLUG BACK give the data on the present productive zone and proposed new productive zone.  
Describe the blowout prevention program, if any. Use additional sheets if necessary.

## CEMENTING PROGRAM:

SURFACE CASING - 325 SACKS CLASS C W/ 4% GEL, 2% CACL2 (13.5 PPG, 1.74 CF/S, 9.11 GW/S). F/B 200 SACKS CLASS C W 2% CACL2 (14.8 PPG, 1.34 CF/S, 6.3 GW/S).

PRODUCTION CASING - 1ST STG: 800 SACKS 50/50 POZ CLASS H W/ 2% GEL, 5% SALT, 1/4# FLOCELE (14.2 PPG, 1.35 CF/S, 6.3 GW/S).  
DV TOOL @ 4000' - 2ND STG: 600 SACKS 35/65 POZ CLASS H W/ 6% GEL, 5% SALT, 1/4# FLOCELE (12.8 PPG, 1.94 CF/S, 10.4 GW/S). F/B 100 SACKS CLASS H (15.6 PPG, 1.18 CF/S, 5.2 GW/S).

BETWELL OPERATES A WELL IN THIS QUARTER QUARTER SECTION AND HAS BEEN FURNISHED A COPY OF THIS APPLICATION.

<sup>23</sup> I hereby certify that the rules and regulations of the Oil Conservation Division have been complied with and that the information given above is true and complete to the best of my knowledge and belief.

Signature

C. Wade Howard

Printed Name

C. Wade Howard

Title Eng. Assistant

Date 12/12/96

Telephone 688-4606

## OIL CONSERVATION DIVISION

Approved By:

Title:

Approval Date:

Expiration Date:

Conditions of Approval:

Attached ☐

DISTRICT I  
P. O. Box 1980, Hobbs, NM 88240

DISTRICT II  
P. O. Drawer DD, Artesia, NM 88210

DISTRICT III  
1000 Rio Brazos Rd., Aztec, NM 87410

DISTRICT IV  
P. O. Box 2088, Santa Fe, NM 87504-2088

State of New Mexico  
Energy, Minerals and Natural Resources Department

OIL CONSERVATION DIVISION

P.O. Box 2088  
Santa Fe, NM 87504-2088

Form C-102  
Revised February 10, 1994

Instructions on back

Submit to Appropriate District Office

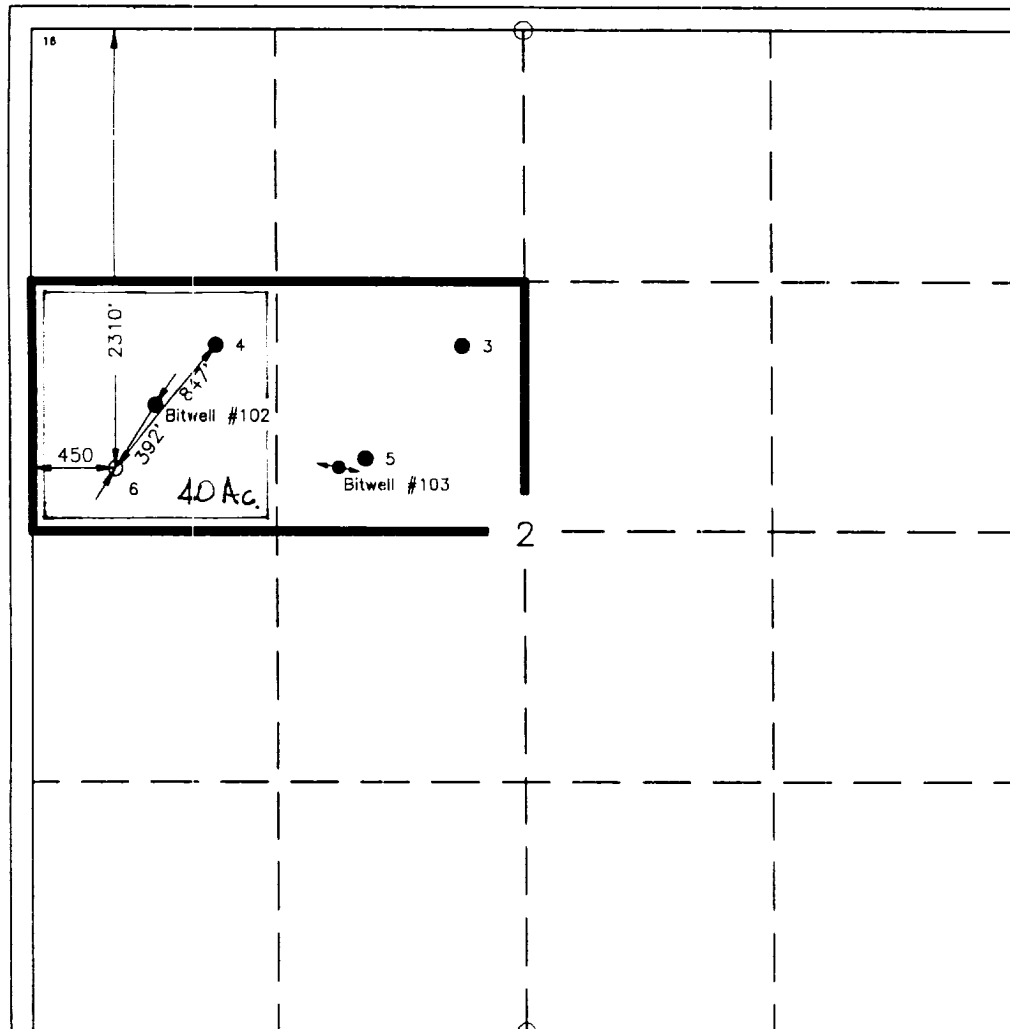
State Lease-4 copies  
Fee Lease-3 copies

☐ AMENDED REPORT

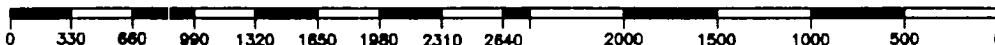
WELL LOCATION AND ACREAGE DEDICATION PLAT

<sup>1</sup> API Number 30-025-33725		<sup>2</sup> Pool Code 34200/35280		<sup>3</sup> Pool Name Justis Blinebry, Justis Tubb Drinkard					
<sup>4</sup> Property Code 11105		<sup>5</sup> Property Name State "L"			<sup>6</sup> Well Number 6				
<sup>7</sup> GRID No. 22351		<sup>8</sup> Operator Name TEXACO EXPLORATION & PRODUCTION, INC.			<sup>9</sup> Elevation 3171'				
<sup>10</sup> Surface Location									
UL or lot no. E	Section 2	Township 25-S	Range 37-E	Lot Idn	Feet from the 2310'	North/South line North	Feet from the 450'	East/West line West	<sup>7</sup> County Lea
<sup>11</sup> Bottom Hole Location If Different From Surface									
UL or lot no.	Section	Township	Range	Lot Idn	Feet from the	North/South line	Feet from the	East/West line	<sup>7</sup> County
<sup>12</sup> Dedicated Acres 40		<sup>13</sup> Joint or Infill		<sup>14</sup> Consolidation Code		<sup>15</sup> Order No.			

NO ALLOWABLE WILL BE ASSIGNED TO THIS COMPLETION UNTIL ALL INTERESTS HAVE BEEN CONSOLIDATED  
OR A NON-STANDARD UNIT HAS BEEN APPROVED BY THE DIVISION.

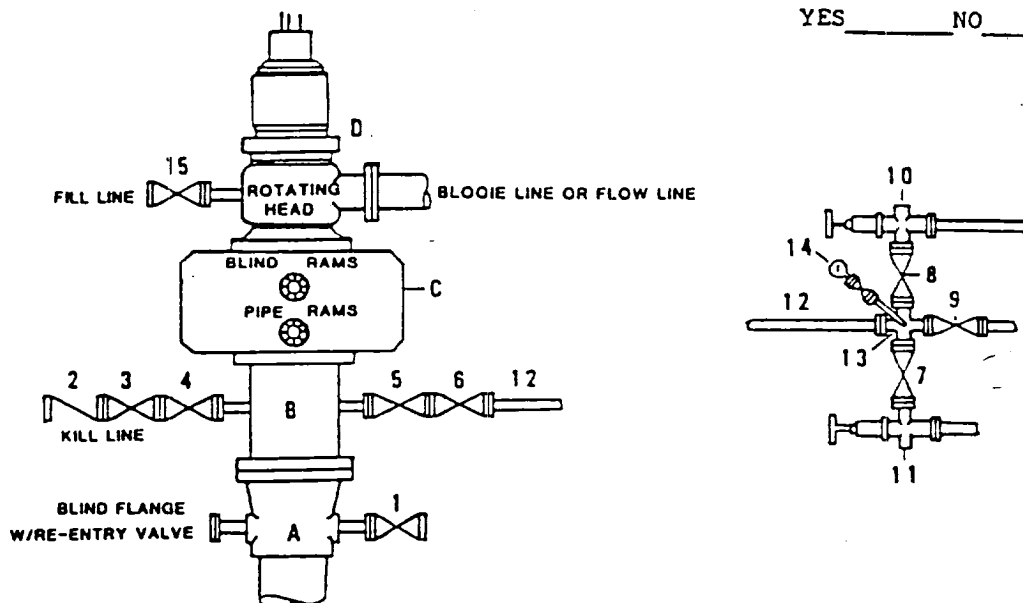


<sup>10</sup> OPERATOR CERTIFICATION	
I hereby certify that the information contained herein is true and complete to the best of my knowledge and belief.	
Signature C. Wade Howard	
Printed Name C. Wade Howard	
Position Engineer's Assistant	
Company Texaco Expl. & Prod. Inc.	
Date December 11, 1996	
<sup>18</sup> SURVEYOR CERTIFICATION	
I hereby certify that the well location shown on this plat was plotted from field notes of actual surveys made by me or under my supervision, and that the same is true and correct to the best of my knowledge and belief.	
Date Surveyed December 9, 1996	
Signature & Seal of Professional Surveyor John S. Piper	
Certificate No. 7254 John S. Piper	
Sheet	



**DRILLING CONTROL**  
**CONDITION II-B 3000 WP**  
**FOR AIR DRILLING OR**  
**WHERE NITROGEN OR AIR BLOWS ARE EXPECTED**

H<sub>2</sub>S TRIM REQUIRED  
 YES \_\_\_\_\_ NO \_\_\_\_\_



DRILLING CONTROL

MATERIAL LIST - CONDITION II - B

- |                |   |
|----------------|---|
| A              | Texaco Wellhead   |
| B              | 3000# W.P. drilling spool with a 2" minimum flanged outlet for kill line and 3" minimum flanged outlet for choke line.  |
| C              | 3000# W.P. Dual ram type preventer, hydraulic operated with 1" steel, 3000# W.P. control lines (where sub-structure height is adequate, 2 - 3000# W.P. single ram type preventers may be utilized). |
| D              | Rotating Head with fill up outlet and extended Bloop Line.  |
| 1,3,4,<br>7,8, | 2" minimum 3000# W.P. flanged full opening steel gate valve, or Halliburton Lo Torc Plug valve.   |
| 2              | 2" minimum 3000# W.P. back pressure valve.  |
| 5,6,9          | 3" minimum 3000# W.P. flanged full opening steel gate valve, or Halliburton Lo Torc Plug valve.   |
| 12             | 1" minimum schedule 80, Grade "B", seamless line pipe.  |
| 13             | 2" minimum x 3" minimum 3000# W.P. flanged cross.   |
| 10,11          | 2" minimum 3000# W.P. adjustable choke bodies.  |
| 14             | Cameron Mud Gauge or equivalent ( location optional in choke line).   |
| 15             | 2" minimum 3000# W.P. flanged or threaded full opening steel gate valve, or Halliburton Lo Torc Plug valve.   |



TEXACO, INC.  
 MIDLAND DIVISION  
 MIDLAND, TEXAS



SCALE	DATE	EST NO	DRG NO
DRAWN BY			
CHECKED BY			
APPROVED BY			

EXHIBIT C