

Form 3160-3  
(December 1990)

SUBMIT IN TRIPLICATE

DEPARTMENT  
BUREAU OF

OPEN. UGRIID NO. 22351  
PROPERTY NO. 10944  
POOL CODE 35280  
EFF. DATE 1/28/97  
APP. NO. 30-025-33804

FORM APPROVED  
Budget Bureau No. 1004-0136  
Expires: December 31, 1991

APPLICATION FOR PERMIT TO DRILL OR DEEPEN

1a. Type of Work <b>DRILL</b> <input checked="" type="checkbox"/> <b>DEEPEN</b> <input type="checkbox"/>	1b. Type of Well OIL WELL <input checked="" type="checkbox"/> GAS WELL <input type="checkbox"/> OTHER <input type="checkbox"/>	SINGLE ZONE <input checked="" type="checkbox"/> MULTIPLE ZONE <input type="checkbox"/>
2. Name of Operator TEXACO EXPLORATION & PRODUCTION INC.		
3. Address and Telephone No. P.O. Box 3109, Midland Texas 79702 688-4606		
4. Location of Well (Report location clearly and in accordance with any State requirements. *) At Surface Unit Letter G : 1450 Feet From The NORTH Line and 2575 Feet From The EAST Line At proposed prod. zone SAME		
14. Distance In Miles and Direction from Nearest Town or Post Office* 6 MILES NE OF JAL, NM		
15. Distance From Proposed* Location to Nearest Property or Lease Line, Ft. (also to nearest drlg. unit line, if any) 1190'	16. No. of Acres in Lease 400	17. No. of Acres Assigned To This Well 40
18. Distance From Proposed Location* to Nearest Well, Drilling, Completed or Applied For, On This Lease, Ft. 796'	19. Proposed Depth 6500'	20. Rotary or Cable Tools ROTARY
21. Elevations (Show whether DF, RT, GR, etc.) GR-3178'		22. Approx. Date Work Will Start* 1/20/97

23 PROPOSED CASING AND CEMENT PROGRAM				
SIZE OF HOLE	GRADE, SIZE OF CASING	WEIGHT PER FOOT	SETTING DEPTH	QUANTITY OF CEMENT
*11	WC50, 8 5/8	24#	1000'	525 SACKS - CIRCULATE
7 7/8	WC50, WC70, 5 1/2	15.5 & 17#	6500'	1400 SACKS - CIRCULATE

CEMENTING PROGRAM:

SURFACE CASING - 325 SACKS CLASS C W/ 4% GEL, 2% CACL2 (13.5 PPG, 1.74 CF/S, 9.11 GW/S). F/B 200 SACKS CLASS C W/ 2% CACL2 (14.8 PPG, 1.34 CF/S, 6.3 GW/S).

PRODUCTION CASING - 1ST STG: 700 SACKS 50/50 POZ CLASS H W/ 2% GEL, 5% SALT, 1/4# FLOCELE (14.2 PPG, 1.35 CF/S, 6.3 GW/S). DV TOOL @ 4000' - 2ND STG: 600 SACKS 35/65 POZ CLASS H W/ 6% GEL, 5% SALT, 1/4# FLOCELE (12.8 PPG, 1.94 CF/S, 10.4 GW/S). F/B 100 SACKS CLASS H (15.6 PPG, 1.18 CF/S, 5.2 GW/S).

DURATION OF OPERATION: 14 DAYS TO DRILL & 15 DAYS TO COMPLETE.

THERE ARE NO OTHER OPERATORS IN THIS QUARTER QUARTER SECTION.

\*VERBAL APPROVAL FROM OCD HOBBS TO SET 8 5/8 SURFACE CASING IN 11" HOLE FOR WELLS IN THIS UNORTHODOX LOCATION: APPLICATION HAS BEEN FILED. (COPY ATTACHED)

**SUBJECT TO  
LIKE APPROVAL  
BY STATE**  
**APPROVAL SUBJECT TO  
GENERAL REQUIREMENTS AND  
SPECIAL STIPULATIONS  
ATTACHED**

In Above Space Describe Proposed Program: If proposal is to deepen, give data on present productive zone and proposed new productive zone. If proposal is to drill or deepen directionally, give pertinent data on subsurface locations and measured true verticle depths. Give blowout preventer program, if any.

24. I hereby certify that the foregoing is true and correct

SIGNATURE C. Wade Howard TITLE Eng. Assistant DATE 12/18/96  
TYPE OR PRINT NAME C. Wade Howard

(This space for Federal or State office use)

PERMIT NO. \_\_\_\_\_ APPROVAL DATE \_\_\_\_\_  
Application approval does not warrant or certify that the applicant holds legal or equitable title to those rights in the subject lease which would entitle the applicant to conduct operations thereon.  
APPROVED BY (ORIG. SGD.) TONY L. FERGUSON DATE 1-21-97  
CONDITIONS OF APPROVAL, IF ANY:

Title 18 U.S.C. Section 1001, makes it a crime for any person knowingly and willfully to make to any department or agency of the United States any false, fictitious or fraudulent statements or representations as to any matter within its jurisdiction.

DISTRICT I  
P. O. Box 1980, Hobbs, NM 88240

DISTRICT II  
P. O. Drawer DD, Artesia, NM 88210

DISTRICT III  
1000 Rio Brazos Rd., Aztec, NM 87410

DISTRICT IV  
P. O. Box 2088, Santa Fe, NM 87504-2088

State of New Mexico  
Energy, Minerals and Natural Resources Department

OIL CONSERVATION DIVISION

PO Box 2088  
Santa Fe, NM 87504-2088

Form C-102  
Revised February 10, 1994

Instructions on back

Submit to Appropriate District Office

State Lease-4 copies  
Fee Lease-3 copies

☐ AMENDED REPORT

WELL LOCATION AND ACREAGE DEDICATION PLAT

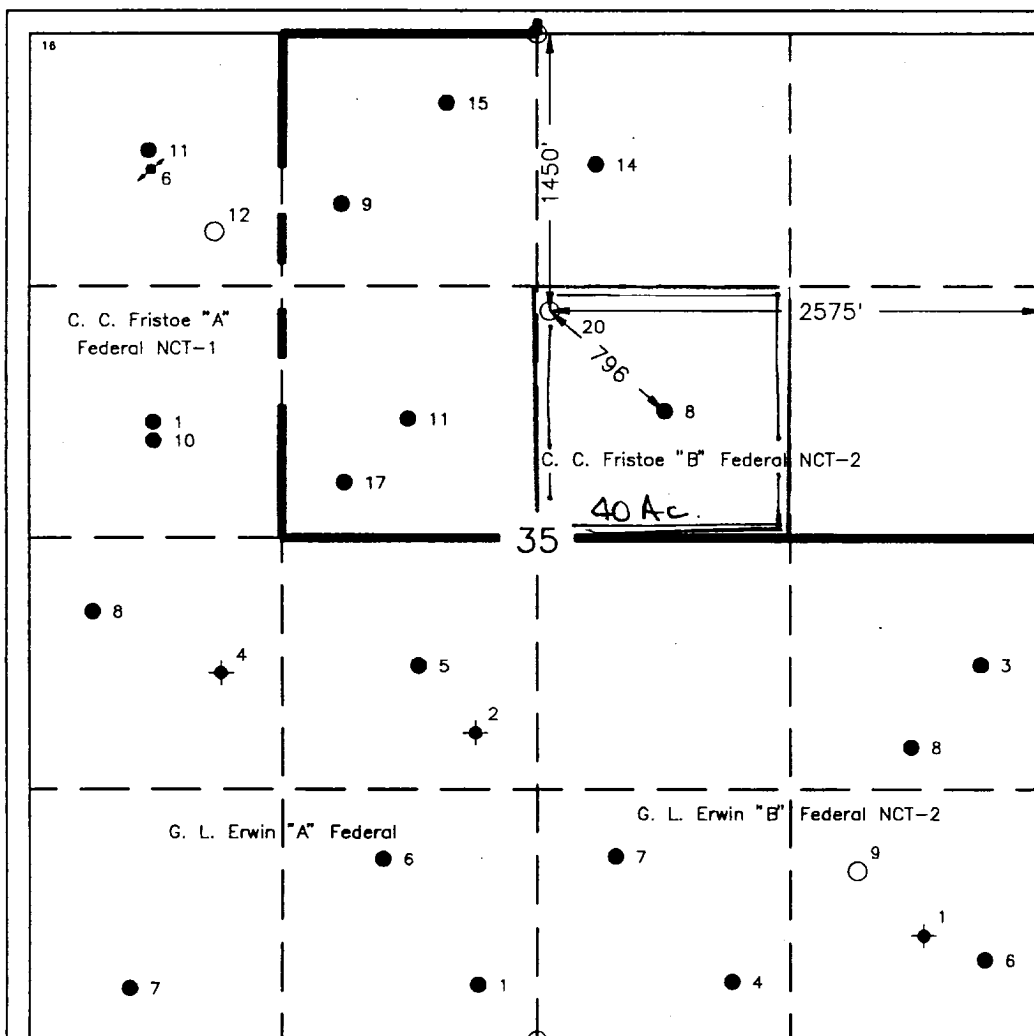
<sup>1</sup> API Number <b>30-025-33804</b>		<sup>2</sup> Pool Code <b>34200/35280</b>		<sup>3</sup> Pool Name <b>Justis Blinebry &amp; Justis Tubb Drinkard</b>	
<sup>4</sup> Property Code <b>10944</b>		<sup>5</sup> Property Name <b>C. C. Fristoe "B" Federal NCT-2</b>			<sup>6</sup> Well Number <b>20</b>
<sup>7</sup> GRID No. <b>22351</b>		<sup>8</sup> Operator Name <b>TEXACO EXPLORATION &amp; PRODUCTION, INC.</b>			<sup>9</sup> Elevation <b>3178'</b>

<sup>10</sup> Surface Location									
UL or lot no. <b>G</b>	Section <b>35</b>	Township <b>24-S</b>	Range <b>37-E</b>	Lot Idn	Feet from the <b>1450'</b>	North/South line <b>North</b>	Feet from the <b>2575'</b>	East/West line <b>East</b>	<sup>7</sup> County <b>Lea</b>

<sup>11</sup> Bottom Hole Location If Different From Surface									
UL or lot no.	Section	Township	Range	Lot Idn	Feet from the	North/South line	Feet from the	East/West line	<sup>7</sup> County

<sup>12</sup> Dedicated Acres <b>40</b>	<sup>13</sup> Joint or Infill	<sup>14</sup> Consolidation Code	<sup>15</sup> Order No. <b>NSL-3760</b>
--	-------------------------------	----------------------------------	--

NO ALLOWABLE WILL BE ASSIGNED TO THIS COMPLETION UNTIL ALL INTERESTS HAVE BEEN CONSOLIDATED  
OR A NON-STANDARD UNIT HAS BEEN APPROVED BY THE DIVISION.



<sup>16</sup>OPERATOR CERTIFICATION

I hereby certify that the information contained herein is true and complete to the best of my knowledge and belief.

Signature

Printed Name

**C. Wade Howard**

Position

**Engineer's Assistant**

Company

**Texaco Expl. & Prod. Inc.**

Date

**December 17, 1996**

<sup>17</sup>SURVEYOR CERTIFICATION

I hereby certify that the well location shown on this plat was plotted from field notes of actual surveys made by me or under my supervision, and that the same is true and correct to the best of my knowledge and belief.

Date Surveyed

**December 11, 1996**

Signature & Seal of  
Professional Surveyor

Certificate No.

**7254 John S. Piper**

## DRILLING PROGRAM

C. C. FRISTOE 'B' FEDERAL NCT-2 WELL No. 20

### **SURFACE DESCRIPTION:**

See Item 11 (other information) in the attached Surface Use and Operations Plan.

**FORMATION TOPS:** Estimated KB Elevation: 3192'

<u>Formation</u>	<u>Depth</u>	<u>Lithology</u>	<u>Fluid Content</u>
Rustler	925'	Anhy, Salt	----
Tansill	2270'	Anhy, Dolo	----
Yates	2450'	Sandstone, Anhy	----
Queen	3115'	Sandstone, Anhy	----
Blinebry	5135'	Dolomite, Anhy	Oil
Tubb	5840'	Sandstone	Oil
Drinkard	6035'	Dolomite, Anhy	Oil
Abo	6270'	Dolo, Limestone	Oil

The base of the salt section is the top of the Tansill at 2270'. No abnormal pressures or temperatures are anticipated to be encountered in this well. H2S is present in the Blinebry. H2S RADIUS OF EXPOSURE: 100ppm = 26', 500ppm = 12', based on 300ppm H2S and 380 MCF (see attached H2S Drilling Operations Plan. H2S equipment to be operational prior to drilling out Surface Casing Shoe.)

Duration of Operation: 14 Days to Drill & 15 Days to Complete

### **PRESSURE CONTROL EQUIPMENT:**

A 3000 psi Dual Ram type preventer with rotating head will be used. (See Exhibit C). We do not plan to have an annular preventer. We will be able to achieve full closure of the well with the double ram preventer. It will be installed after surface casing is set. BOP will be tested each time it is installed on a casing string and at least every 29 days, and operated at least once each 24-hour period during drilling.

A PVT system will not be installed. We will be drilling thru the reserve pit and will circulate the steel pits one hour each tour to check for gains and losses and will be noted on the driller's log, which is Texaco's policy.

We do not plan to run an automatic remote-controlled choke. We will have installed and tested two manual, H2S trimmed, chokes.

**CASING AND CEMENT PROGRAM:**

The casing and cementing programs are detailed on Form 3160-3. All casing will be new.

**Centralizer Program:**

Surface Casing - Centralize the bottom 3 joints and every 4th to surface.

Production Casing - Centralize every 3rd joint on bottom 2000'.

**MUD PROGRAM:**

<u>Depth</u>	<u>Type</u>	<u>Weight</u>	<u>Viscosity</u>
0'-1000'	Fresh Water	8.4	28
1000'-4000'	Brine	10.0	29
4000'-6500'	Brine/Starch	10.0	32-36

Bottom Hole Pressure at T.D. estimated to be 6.7 PPG EMW (2264 psi).

**LOGGING, TESTING:**

GR-CNL-LDT, GR-DLL-MSFL, and GR-Sonic surveys will be run.

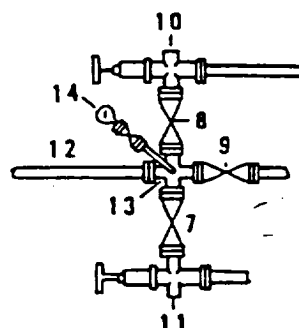
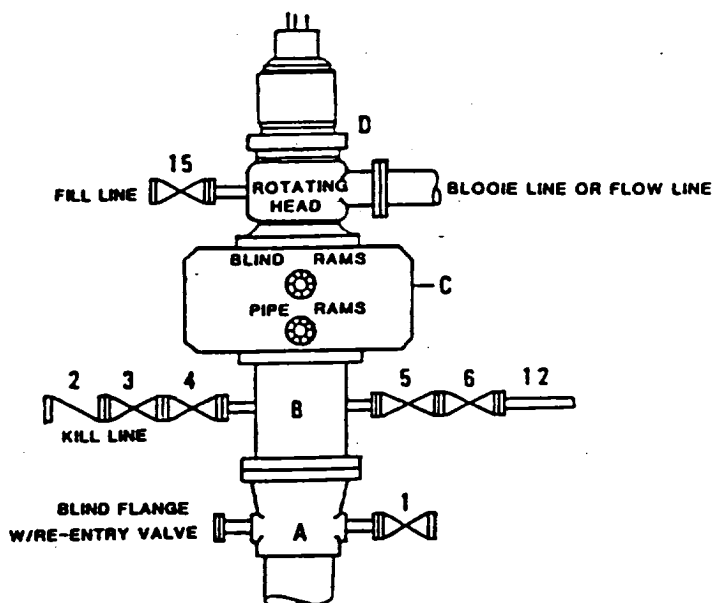
No Mud Logging Unit will be used.

No drill stem tests will be conducted.

No cores will be taken.

**DRILLING CONTROL  
CONDITION II-B 3000 WP  
FOR AIR DRILLING OR  
WHERE NITROGEN OR AIR BLOWS ARE EXPECTED**

H<sub>2</sub>S TRIM REQUIRED  
YES \_\_\_\_\_ NO \_\_\_\_\_



**DRILLING CONTROL**

**MATERIAL LIST - CONDITION II - B**

- |                |   |
|----------------|---|
| A              | Texaco Wellhead   |
| B              | 3000# W.P. drilling spool with a 2" minimum flanged outlet for kill line and 3" minimum flanged outlet for choke line.  |
| C              | 3000# W.P. Dual ram type preventer, hydraulic operated with 1" steel, 3000# W.P. control lines (where sub-structure height is adequate, 2 - 3000# W.P. single ram type preventers may be utilized). |
| D              | Rotating Head with fill up outlet and extended Blooie Line.   |
| 1,3,4,<br>7,8, | 2" minimum 3000# W.P. flanged full opening steel gate valve, or Halliburton Lo Torc Plug valve.   |
| 2              | 2" minimum 3000# W.P. back pressure valve.  |
| 5,6,9          | 3" minimum 3000# W.P. flanged full opening steel gate valve, or Halliburton Lo Torc Plug valve.   |
| 12             | 3" minimum schedule 80, Grade "B", seamless line pipe.  |
| 13             | 2" minimum x 3" minimum 3000# W.P. flanged cross.   |
| 10,11          | 2" minimum 3000# W.P. adjustable choke bodies.  |
| 14             | Cameron Mud Gauge or equivalent ( location optional in choke line).   |
| 15             | 2" minimum 3000# W.P. flanged or threaded full opening steel gate valve, or Halliburton Lo Torc Plug valve.   |



TEXACO, INC.  
MIDLAND DIVISION  
MIDLAND, TEXAS



SCALE	DATE	EST NO	DRG NO
DRAWN BY			
CHECKED BY			
APPROVED BY			

EXHIBIT C

**OPERATOR - LANDOWNER AGREEMENT**

**COMPANY:** TEXACO EXPLORATION AND PRODUCTION INC.

**PROPOSED WELL:** C. C. FRISTOE 'B' FEDERAL NCT-2 No. 20

**FEDERAL LEASE NUMBER:** NM-14 218

This is to advise that Texaco Exploration and Production Inc. has an agreement with:  
EL PASO NATURAL GAS Co. P.O. Box 1492, EL PASO, TX 79978 (915) 541-3689

the surface owner, concerning entry and surface restoration after completion of drilling operations at the above described well.

After abandonment of the well, all pits will be filled and levelled, and all equipment and trash will be removed from the well site. No other requirements were made concerning restoration of the well site.

12/18/96  
Date

C. Wade Howard  
C. W. Howard  
Engineer's Assistant  
Midland, Texas



Texaco Exploration  
and Production Inc

500 North Loraine  
Midland TX 79701

P O Box 3109  
Midland TX 79702

December 18, 1996

GOV - STATE AND LOCAL GOVERNMENTS

Unorthodox Location

C. C. Fristoe "B" Federal NCT-2 Well No. 20

Justis Blinbry and Justis Tubb Drinkard Fields

Lea County, New Mexico

State of New Mexico

Energy and Minerals Department

Oil Conservation Division

2040 South Pacheco

Santa Fe, New Mexico 87505

Attention: Mr. Michael E. Stogner

Gentlemen:

An Exception to Rule 104 F. (2) by administrative approval, is requested for the captioned well. This well is located 1450' FNL & 2575' FEL, Unit Letter "G", of Section 35, T-24-S, R-37-E.

This well must be drilled in this location due to geological conditions. As seen on the attached map, this location is approximately equidistance to the offsetting 40 Acre producers. The proposed location will encounter laterally discontinuous reservoirs that can not be depleted from existing wellbores. If secondary recovery operations are needed in the future, the proposed location will allow the implementation of standard patterns.

There are no "affected offset operators" to this location. Attached is Form C-102 for this well.

Yours very truly,

C. W. Howard

Engineer Assistant

CWH:CES Attachments cc: BLM, Roswell, NM