

DISTRICT I

P.O. Box 1000, Hobbs, NM 88241-1000

State of New Mexico

Energy, Minerals and Natural Resources Department

Form C-102

Revised February 10, 1994

Submit to Appropriate District Office

State Lease - 4 Copies

Fee Lease - 3 Copies

DISTRICT II

P.O. Drawer DD, Artesia, NM 88211-0719

DISTRICT III

1000 Rio Brazos Rd., Aztec, NM 87410

OIL CONSERVATION DIVISION

P.O. Box 2088

Santa Fe, New Mexico 87504-2088

DISTRICT IV

P.O. Box 2088, Santa Fe, NM 87504-2088

☐ AMENDED REPORT

WELL LOCATION AND ACREAGE DEDICATION PLAT

API Number 30-025-33882	Pool Code 37240/33820	Pool Name LANGLIE MATTIX /JALMAT OIL AND JALMAT GAS
Property Code 014899	Property Name C. D. WOOLWORTH	Well Number 11
OGRID No. 000962	Operator Name ARCH PETROLEUM, INC.	Elevation 3258

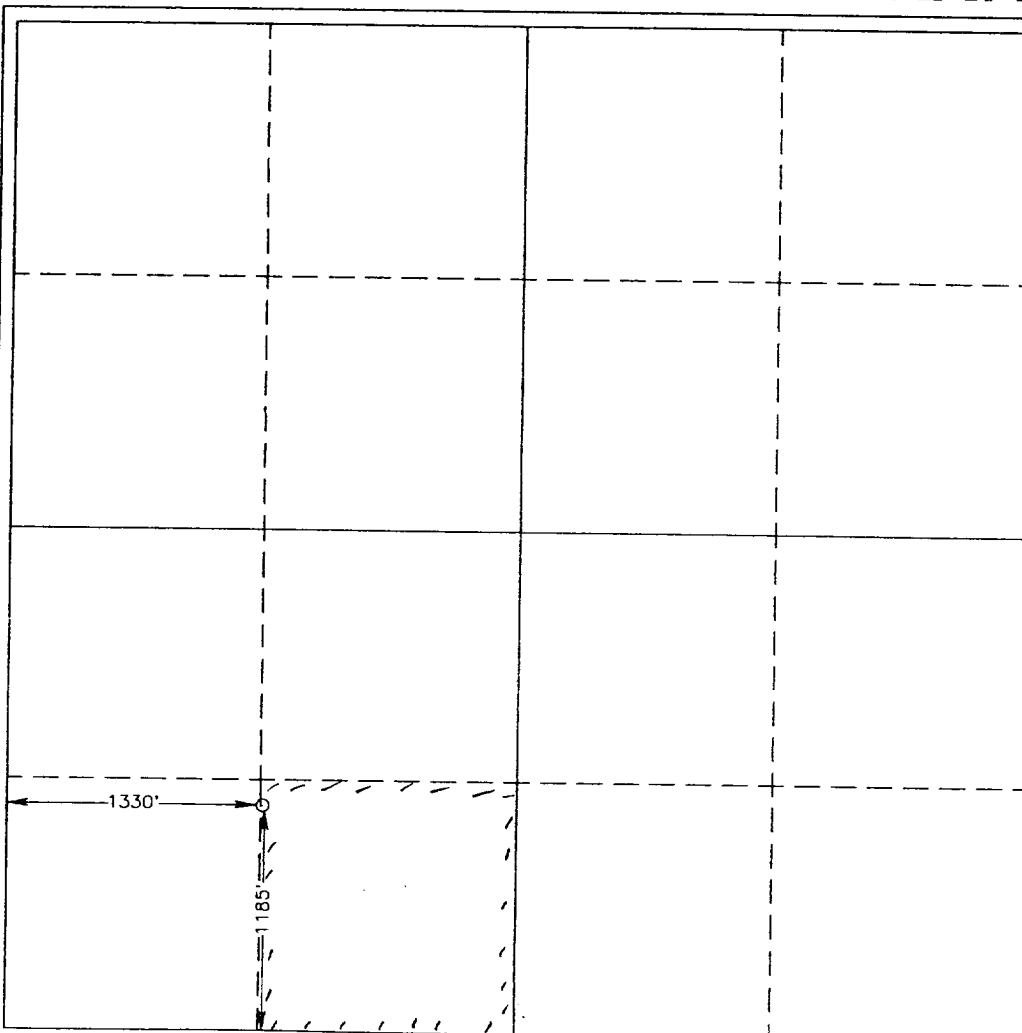
Surface Location

UL or lot No. N	Section 30	Township 24 S	Range 37 E	Lot Idn	Feet from the 1185	North/South line SOUTH	Feet from the 1330	East/West line WEST	County LEA
--------------------	---------------	------------------	---------------	---------	-----------------------	---------------------------	-----------------------	------------------------	---------------

Bottom Hole Location If Different From Surface

UL or lot No.	Section	Township	Range	Lot Idn	Feet from the	North/South line	Feet from the	East/West line	County
Dedicated Acres 40	Joint or Infill	Consolidation Code	Order No. N/SL-3773						

NO ALLOWABLE WILL BE ASSIGNED TO THIS COMPLETION UNTIL ALL INTERESTS HAVE BEEN CONSOLIDATED
OR A NON-STANDARD UNIT HAS BEEN APPROVED BY THE DIVISION



OPERATOR CERTIFICATION

I hereby certify the the information
contained herein is true and complete to the
best of my knowledge and belief.

Bobbie Brooks
Signature

BOBBIE BROOKS
Printed Name

PRODUCTION ANALYST
Title

1-20-97
Date

SURVEYOR CERTIFICATION

I hereby certify that the well location shown
on this plat was plotted from field notes of
actual surveys made by me or under my
supervision, and that the same is true and
correct to the best of my belief.

JANUARY 15, 1997

Date Surveyed. JLP

Signature & Seal of
Professional Surveyor

Ronald J. Eidson
Professional Surveyor
W.O. Num. 97-11-0071
Certificate No. JOHN W. WEST, 676
RONALD J. EIDSON, 3239
GARY G. EIDSON, 12641

