

Form 3160-3  
(December 1990)

SUBMIT IN TRIPLICATE

OPER. OGRID NO. 22351  
PROPERTY NO. 10943  
UNIT 38240  
DEPARTMENT 35280  
BUREAU OF LAND MANAGEMENT  
EFFECT. DATE 6/6/97  
API NO. 30-025-34009

FORM APPROVED  
Budget Bureau No. 1004-0136  
Expires: December 31, 1991

APPLICATION FOR PERMIT TO DRILL OR DEEPEN

1a. Type of Work <b>DRILL</b> <input checked="" type="checkbox"/> <b>DEEPEN</b> <input type="checkbox"/>		1b. Type of Well <b>SINGLE ZONE</b> <input checked="" type="checkbox"/> <b>MULTIPLE ZONE</b> <input type="checkbox"/>	
OIL WELL <input checked="" type="checkbox"/> GAS WELL <input type="checkbox"/> OTHER <input type="checkbox"/>			
2. Name of Operator <b>TEXACO EXPLORATION &amp; PRODUCTION INC.</b>			
3. Address and Telephone No. <b>P.O. Box 3109, Midland Texas 79702 688-4606</b>			
4. Location of Well (Report location clearly and in accordance with any State requirements. *) At Surface Unit Letter <b>M</b> : <b>900</b> Feet From The <b>SOUTH</b> Line and <b>900</b> Feet From The <b>WEST</b> Line At proposed prod. zone <b>SAME</b>			
14. Distance in Miles and Direction from Nearest Town or Post Office* <b>5.9 MILES NE OF JAL, NM</b>		15. Distance From Proposed* Location to Nearest Property or Lease Line, Ft. (also to nearest drig. unit line, if any) <b>900'</b>	
16. No. of Acres in Lease <b>40</b>		17. No. of Acres Assigned To This Well <b>40</b>	
18. Distance From Proposed Location* to Nearest Well, Drilling, Completed or Applied For, On This Lease, Ft. <b>337'</b>		19. Proposed Depth <b>6550'</b>	
20. Rotary or Cable Tools <b>ROTARY</b>		21. Approx. Date Work Will Start* <b>6/20/97</b>	
22. Elevations (Show whether DF, RT, GR, etc.) <b>GR-3169'</b>			

23. PROPOSED CASING AND CEMENT PROGRAM

SIZE OF HOLE	GRADE, SIZE OF CASING	WEIGHT PER FOOT	SETTING DEPTH	QUANTITY OF CEMENT
*11	WC50, 8 5/8	24#	925'	525 SACKS - CIRCULATE <b>WITNESS</b>
7 7/8	L80/K55, 4 1/2	11.6#	6550'	1400 SACKS - TOC @ 1600' <b>WITNESS</b>

CEMENTING PROGRAM:

SURFACE CASING: 325 SACKS CLASS C w/ 4% GEL, 2% CC (13.5 PPG, 1.74 CF/S, 9.1 GW/S). F/B 200 SACKS CLASS C w/ 2% CC (14.8 PPG, 1.34 CF/S, 6.3 GW/S).

PRODUCTION CASING: 700 SACKS 35/65 POZ H w/ 6% GEL, 5% SALT, 1/4# FC (12.4 PPG, 2.14 CF/S, 11.9 GW/S). F/B 700 SACKS 50/50 POZ H w/ 2% GEL, 5% SALT, 1/4# FC (14.2 PPG, 1.35 CF/S, 6.3 GW/S).

\*VERBAL APPROVAL FOR OCD IN HOBBS TO SET 8 5/8 SURFACE CASING IN AN 11" HOLE FOR WELLS IN THIS SECTION.

12 DAYS TO DRILL, 10 DAYS TO COMPLETE.  
THERE ARE NO OTHER OPERATORS IN THIS QUARTER QUARTER SECTION.

In Above Space Describe Proposed Program: If proposal is to deepen, give data on present productive zone and proposed new productive zone. If proposal is to drill or deepen directionally, give pertinent data on subsurface locations and measured true verticle depths. Give blowout preventer program, if any.

24. I hereby certify that the foregoing is true and correct.

SIGNATURE C. Wade Howard TITLE Eng. Assistant DATE 5/8/97  
TYPE OR PRINT NAME C. Wade Howard

(This space for Federal or State office use)

PERMIT NO. \_\_\_\_\_ APPROVAL DATE \_\_\_\_\_

Application approval does not warrant or certify that the applicant holds legal or equitable title to those rights in the subject lease which would entitle the applicant to conduct operations thereon.

APPROVED BY (ORIG. SGD.) JAMES G. PETTENGILL TITLE ADM. MINERALS DATE 6/4/97

CONDITIONS OF APPROVAL, IF ANY:

Title 18 U.S.C. Section 1001, makes it a crime for any person knowingly and willfully to make to any department or agency of the United States any false, fictitious or fraudulent statements or representations as to any matter within its jurisdiction.

DISTRICT I  
P. O. Box 1980, Hobbs, NM 88240

DISTRICT II  
P. O. Drawer DD, Artesia, NM 88210

DISTRICT III  
1000 Rio Brazos Rd., Aztec, NM 87410

DISTRICT IV  
P. O. Box 2088, Santa Fe, NM 87504-2088

State of New Mexico  
Energy, Minerals and Natural Resources Department

OIL CONSERVATION DIVISION  
PO Box 2088  
Santa Fe, NM 87504-2088

Form C-102  
Revised February 10, 1994

Instructions on back

Submit to Appropriate District Office

State Lease-4 copies  
Fee Lease-3 copies

☐ AMENDED REPORT

WELL LOCATION AND ACREAGE DEDICATION PLAT

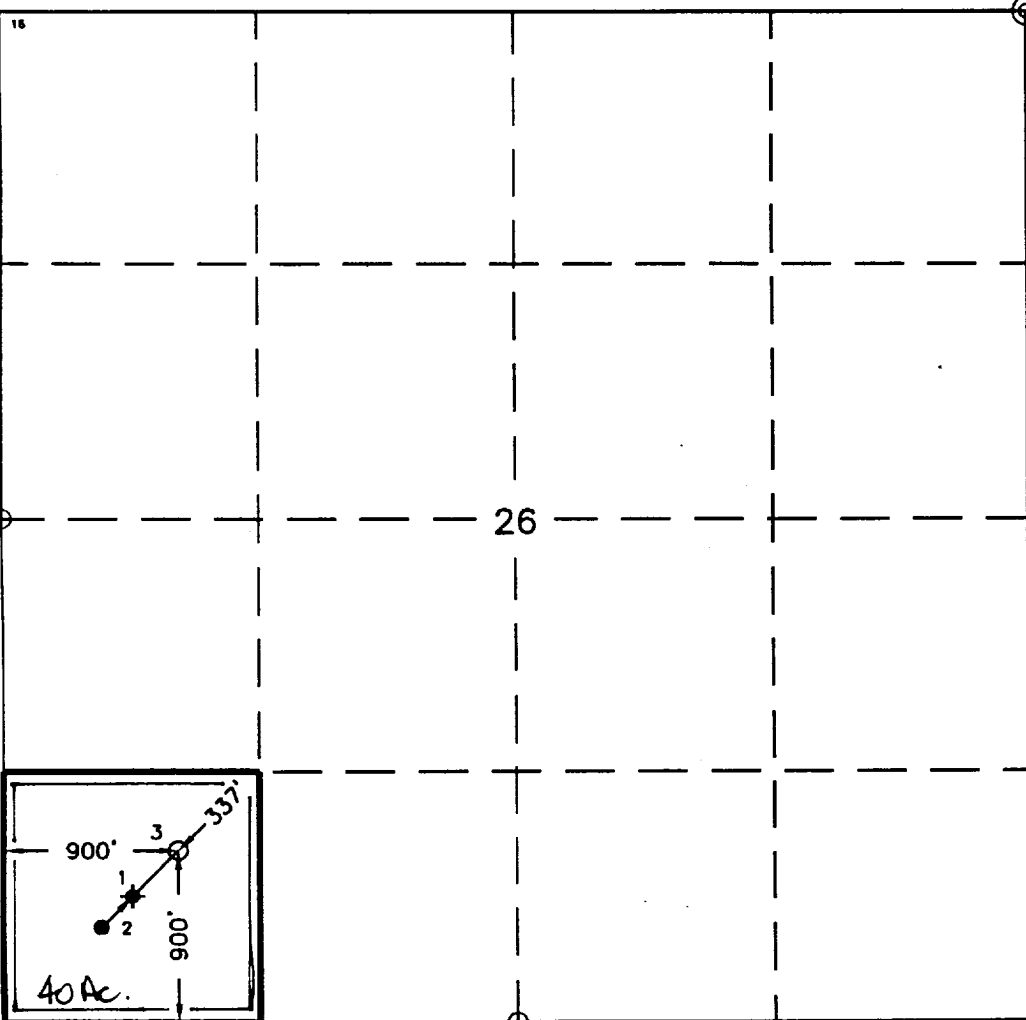
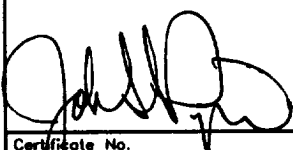
<sup>1</sup> API Number <b>30-025-34009</b>		<sup>2</sup> Pool Code <b>34009 35280</b>		<sup>3</sup> Pool Name <b>Justis Blinbry; Justis Tubb Drinkard</b>	
<sup>4</sup> Property Code <b>10943</b>		<sup>5</sup> Property Name <b>C. C. Frisoe "B" Federal NCT-1</b>			<sup>6</sup> Well Number <b>3</b>
<sup>7</sup> OGRID No. <b>22351</b>		<sup>8</sup> Operator Name <b>TEXACO EXPLORATION &amp; PRODUCTION, INC.</b>			<sup>9</sup> Elevation <b>3196'</b>

<sup>10</sup> Surface Location									
UL or lot no. <b>M</b>	Section <b>26</b>	Township <b>24-S</b>	Range <b>37-E</b>	Lot Idn	Feet from the <b>900'</b>	North/South line <b>South</b>	Feet from the <b>900'</b>	East/West line <b>West</b>	<sup>7</sup> County <b>Lea</b>

<sup>11</sup> Bottom Hole Location If Different From Surface									
UL or lot no.	Section	Township	Range	Lot Idn	Feet from the	North/South line	Feet from the	East/West line	<sup>7</sup> County

<sup>12</sup> Dedicated Acres <b>40</b>	<sup>13</sup> Joint or Infill	<sup>14</sup> Consolidation Code	<sup>15</sup> Order No.
--	-------------------------------	----------------------------------	-------------------------

NO ALLOWABLE WILL BE ASSIGNED TO THIS COMPLETION UNTIL ALL INTERESTS HAVE BEEN CONSOLIDATED  
OR A NON-STANDARD UNIT HAS BEEN APPROVED BY THE DIVISION.

	<b><sup>16</sup>OPERATOR CERTIFICATION</b> I hereby certify that the information contained herein is true and complete to the best of my knowledge and belief.
	Signature <i>C. Wade Howard</i>
	Printed Name <b>C. Wade Howard</b>
	Position <b>Engineer's Assistant</b>
	Company <b>Texaco Expl. &amp; Prod. Inc.</b>
	Date <b>May 13, 1997</b>
	<b><sup>17</sup>SURVEYOR CERTIFICATION</b> I hereby certify that the well location shown on this plat was plotted from field notes of actual surveys made by me or under my supervision, and that the same is true and correct to the best of my knowledge and belief.
	Date Surveyed <b>April 23, 1997</b>
	Signature & Seal of Professional Surveyor 
	Certificate No. <b>7254 John S. Piper</b>

Sheet 8 of 8

## DRILLING PROGRAM

C. C. FRISTOE 'B' FEDERAL NCT-1 WELL No. 3

### **SURFACE DESCRIPTION:**

See Item 11 (other information) in the attached Surface Use and Operations Plan.

**FORMATION TOPS:** Estimated KB Elevation: 3210'

<u>Formation</u>	<u>Depth</u>	<u>Lithology</u>	<u>Fluid Content</u>
Rustler	925'	Anhy, Salt	----
Tansill	2270'	Anhy, Dolo	----
Yates	2385'	Sandstone, Anhy	----
Queen	3090'	Sandstone, Anhy	----
Blinebry	5175'	Dolomite, Anhy	Oil
Tubb	5875'	Sandstone	Oil
Drinkard	6075'	Dolomite, Anhy	Oil
Abo	6375'	Dolo, Limestone	Oil

The base of the salt section is the top of the Tansill at 2270'. No abnormal pressures or temperatures are anticipated to be encountered in this well. H<sub>2</sub>S is present in the Blinebry. H<sub>2</sub>S RADIUS OF EXPOSURE: 100ppm = 26', 500ppm = 12', based on 300ppm H<sub>2</sub>S and 380 MCF (see attached H<sub>2</sub>S Drilling Operations Plan. H<sub>2</sub>S equipment to be operational prior to drilling out Surface Casing Shoe.)

Duration of Operation: 12 Days to Drill & 10 Days to Complete

### **PRESSURE CONTROL EQUIPMENT:**

A 3000 psi Dual Ram type preventer with rotating head will be used. (See Exhibit C). We do not plan to have an annular preventer. We will be able to achieve full closure of the well with the double ram preventer. It will be installed after surface casing is set. BOP will be tested each time it is installed on a casing string and at least every 29 days, and operated at least once each 24-hour period during drilling.

A PVT system will not be installed. We will be drilling thru the reserve pit and will circulate the steel pits one hour each tour to check for gains and losses and will be noted on the driller's log, which is Texaco's policy.

We do not plan to run an automatic remote-controlled choke. We will have installed and tested two manual, H<sub>2</sub>S trimmed, chokes.

### CASING AND CEMENT PROGRAM:

The cementing program is detailed on Form 3160-3. All casing will be new.

#### Casing Program:

Surface Casing - 8 5/8", 24#, WC50, STC set at 925'.

Production Casing - 0' to 2000': 4 1/2", 11.6#, L-80, LTC  
2000' to 6550': 4 1/2", 11.6#, K-55, LTC.

#### Centralizer Program:

Surface Casing - Centralize the bottom 3 joints and every 4th to surface.

Production Casing - Centralize every 3rd joint on bottom 2000'.

### MUD PROGRAM:

<u>Depth</u>	<u>Type</u>	<u>Weight</u>	<u>Viscosity</u>
0'-925'	Fresh Water	8.4	28
925'-4000'	Brine	10.0	29
4000'-6550'	Brine/Starch	10.0	32-36

Bottom Hole Pressure at T.D. estimated to be 6.7 PPG EMW (2282 psi).

### LOGGING, TESTING:

GR-CNL-LDT, GR-DLL-MSFL, and GR-Sonic surveys will be run.

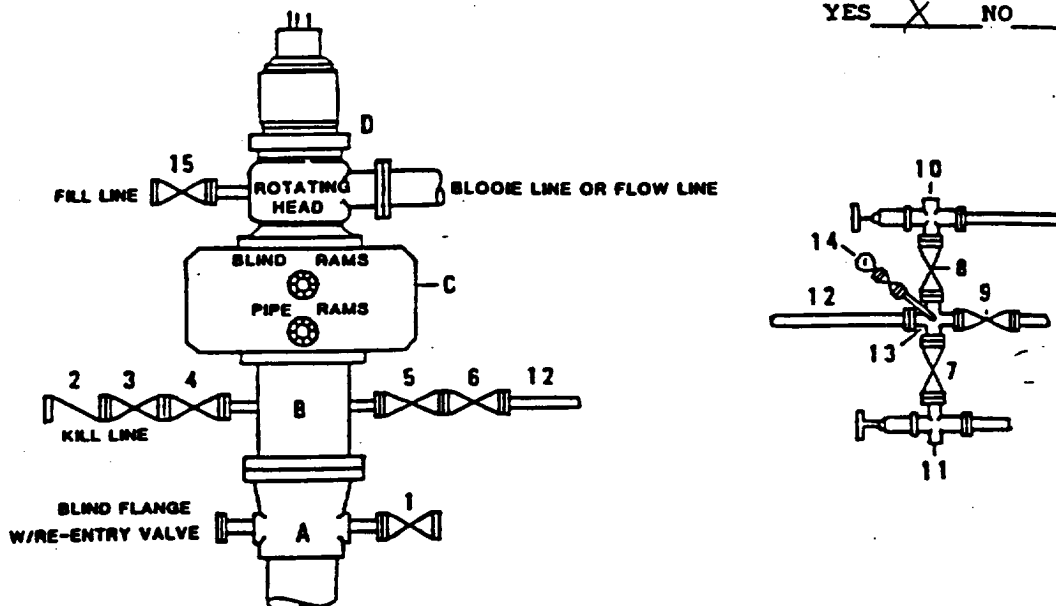
No Mud Logging Unit will be used.

No drill stem tests will be conducted.

No cores will be taken.

**DRILLING CONTROL  
CONDITION II-B 3000 WP  
FOR AIR DRILLING OR  
WHERE NITROGEN OR AIR BLOWS ARE EXPECTED**

H<sub>2</sub>S TRIM REQUIRED  
YES ☒ NO ☐



DRILLING CONTROL

MATERIAL LIST - CONDITION II - B

- A      Texaco Wellhead
- B      3000# W.P. drilling spool with a 2" minimum flanged outlet for kill line and 3" minimum flanged outlet for choke line.
- C      3000# W.P. Dual ram type preventer, hydraulic operated with 1" steel, 3000# W.P. control lines (where sub-structure height is adequate, 2 - 3000# W.P. single ram type preventers may be utilized).
- D      Rotating Head with fill up outlet and extended Bloop Line.
- 1,3,4, 7,8,      2" minimum 3000# W.P. flanged full opening steel gate valve, or Halliburton Lo Torc Plug valve.
- 2      2" minimum 3000# W.P. back pressure valve.
- 5,6,9      3" minimum 3000# W.P. flanged full opening steel gate valve, or Halliburton Lo Torc Plug valve.
- 12      3" minimum schedule 80, Grade "B", seamless line pipe.
- 13      2" minimum x 3" minimum 3000# W.P. flanged cross.
- 10,11      2" minimum 3000# W.P. adjustable choke bodies.
- 14      Cameron Mud Gauge or equivalent ( location optional in choke line).
- 15      2" minimum 3000# W.P. flanged or threaded full opening steel gate valve, or Halliburton Lo Torc Plug valve.



TEXACO, INC.  
MIDLAND DIVISION  
MIDLAND, TEXAS



SCALE	DATE	EST NO	DRG NO
DRAWN BY			
CHECKED BY			
APPROVED BY			

EXHIBIT C

**OPERATOR - LANDOWNER AGREEMENT**

**COMPANY:** TEXACO EXPLORATION AND PRODUCTION INC.

**PROPOSED WELL:** C. C. FRISTOE "B" FEDERAL NCT-1 No. 3

**FEDERAL LEASE NUMBER:** NM 14218

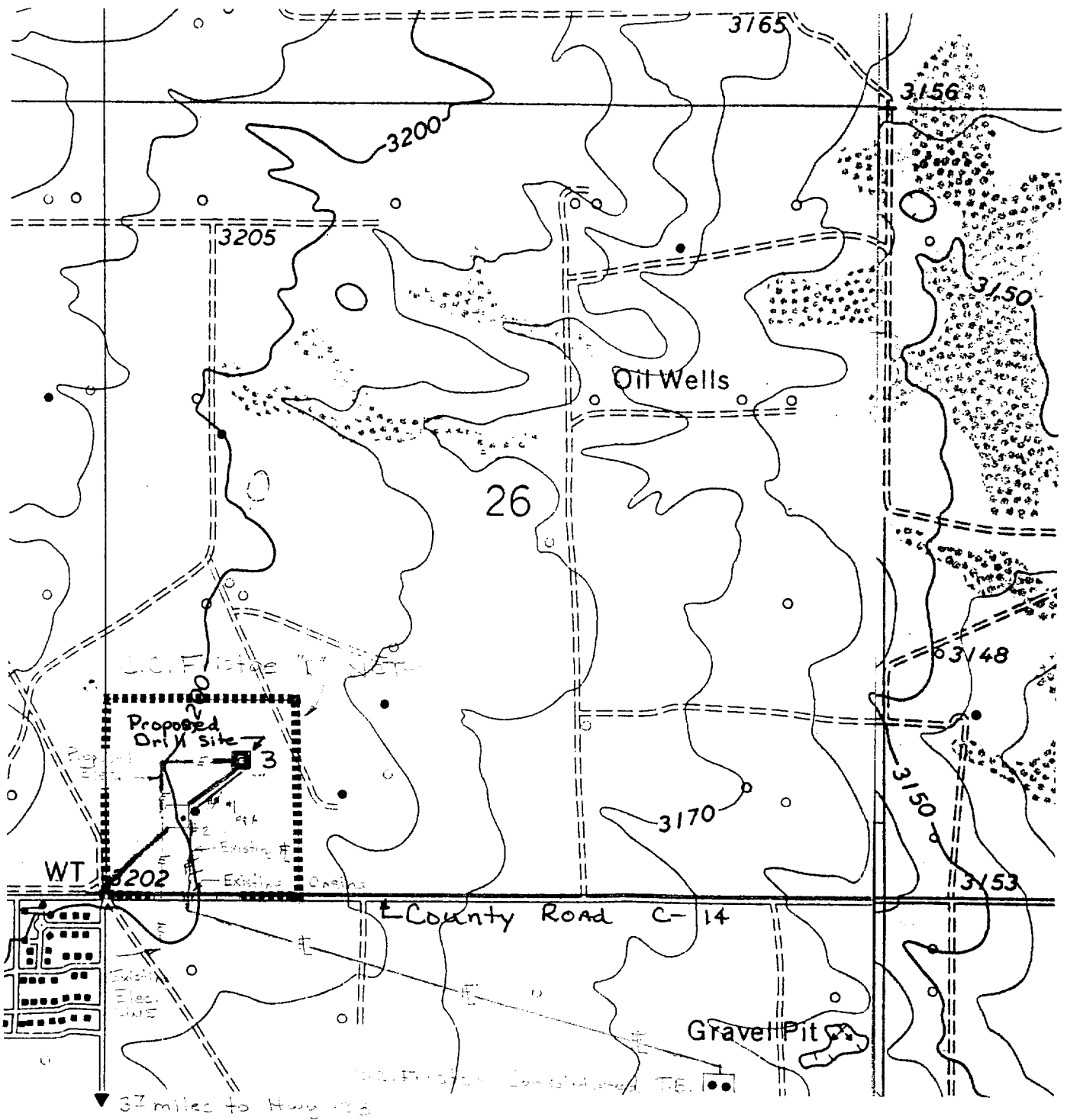
This is to advise that Texaco Exploration and Production Inc. has an agreement with:  
REBECCA JENN DODD, HCR 68, Box 188, JAL, NM 88252

the surface owner, concerning entry and surface restoration after completion of drilling operations at the above described well.

After abandonment of the well, all pits will be filled and levelled, and all equipment and trash will be removed from the well site. No other requirements were made concerning restoration of the well site.

5/8/97  
Date

C. Wade Howard  
C. W. Howard  
Engineer's Assistant  
Midland, Texas



### LEGEND OF SYMBOLS

- = Access Road (Yellow)
- = Resource Road Federal Land (Pink)
- = Resource Road on Lease (Brown)
- = Proposed Resource Road (Red)
- = Proposed Electric Line (Orange)
- = Proposed Production Flowline (Green)
- = Staked Well Location
- = Producing Well Location
- = Water Well
- = Found 1" Iron Pipe With Brass Cap
- ⊙ = Found 2" Iron Pipe With Brass Cap
- = Unit or Lease Boundary

### EXHIBIT "A" ACCESS ROAD AND FACILITIES MAP

### TEXACO EXPLORATION AND PRODUCTION

C. C. Fristoe "B" Federal NCT-1 No. 3  
900' FSL & 900' FWL Section 26,  
T-24-S, R-37-E, NMPM, Lea County, NM

Drawn by: Oscar Flores

Scale: 1" = 1000 Feet

Date: April 25, 1997

C. Wade Howard

Checked by: J. S. Piper

Sheet 6 of 8

ELF  
16/18/01  
ABOVE DATE DOES NOT  
INDICATE WHEN  
CONFIDENTIAL LOGS  
WILL BE RELEASED

15/12/17