

DISTRICT I
P.O. Box 1980, Hobbs, NM 88241-1980
DISTRICT II
P.O. Box Drawer DD, Artesia, NM 88211-0719
DISTRICT III
1000 Rio Brazos Rd., Aztec, NM 87410
DISTRICT IV
P.O. Box 2088, Santa Fe, NM 87504-2088

State of New Mexico
Energy, Minerals and Natural Resources Department

Form C-102

Revised February 10, 199

Instructions on back

Submit to Appropriate District Office

State Lease - 4 Copy

Fee Lease - 3 Copy

AMENDED REPORT

OIL CONSERVATION DIVISION

P.O. Box 2088
Santa Fe, New Mexico 87504-2088

WELL LOCATION AND ACREAGE DEDICATION PLAT

1 API Number 30-025-34053	2 Pool Code 35280	3 Pool Name JUSTIS TUBB DRINKARD
4 Property Code 010943	5 Property Name C. C. FRISTOE 'A' FEDERAL NCT-1	6 Well No. 13
7 OGRID Number 022351	8 Operator Name TEXACO EXPLORATION & PRODUCTION INC.	9 Elevation GL 3190', BK-3203'

10 Surface Location

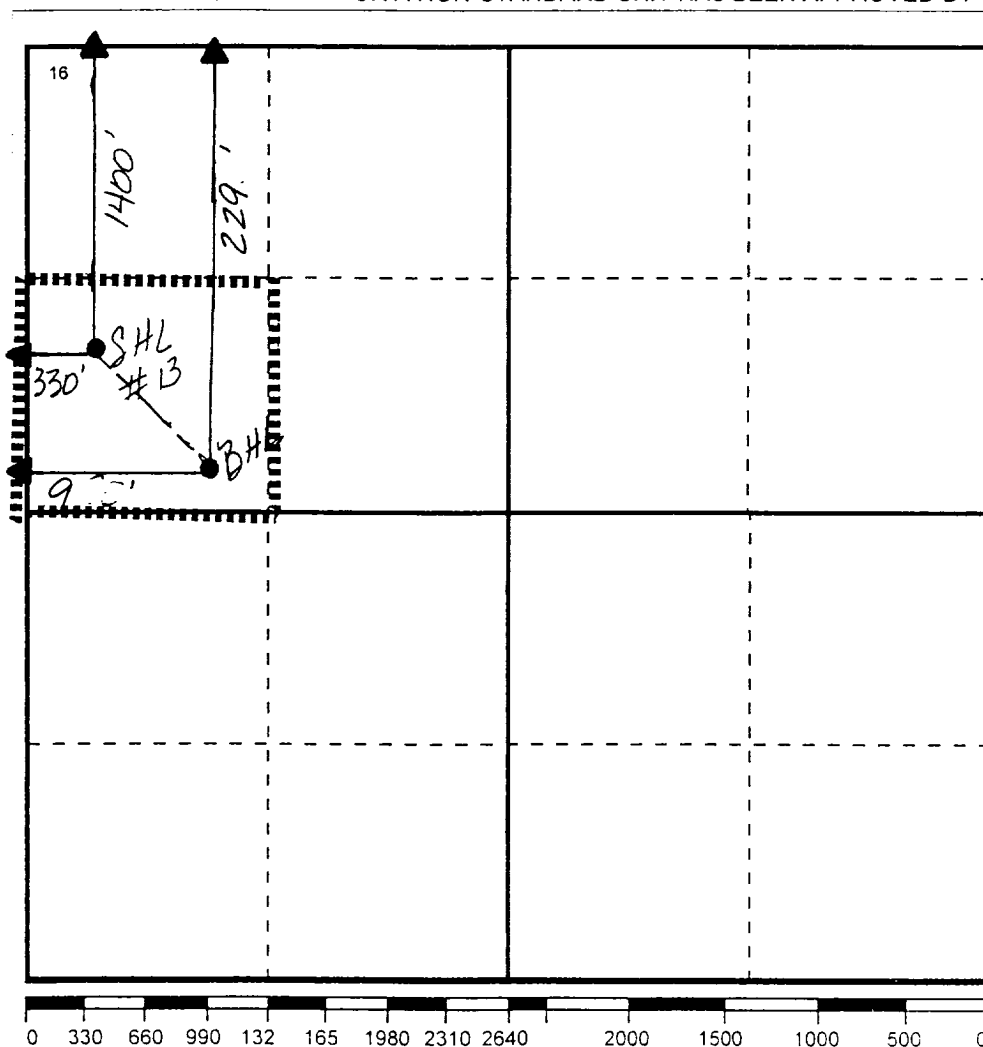
UI or lot no E	Section 35	Township 24-S	Range 37-E	Lot.Idn	Feet From The 1400	North/South Line NORTH	Feet From The 330	East/West Line WEST	County LEA
-------------------	---------------	------------------	---------------	---------	-----------------------	---------------------------	----------------------	------------------------	---------------

11 Bottom Hole Location If Different From Surface

UI or lot no E	Section 35	Township 24S	Range 37E	Lot.Idn	Feet From The 2293'	North/South Line NORTH	Feet From The 965'	East/West Line WEST	County LEA
-------------------	---------------	-----------------	--------------	---------	------------------------	---------------------------	-----------------------	------------------------	---------------

12 Dedicated Acre 40	13 Joint or Infill No	14 Consolidation Code	15 Order No.
-------------------------	--------------------------	-----------------------	--------------

NO ALLOWABLE WILL BE ASSIGNED TO THIS COMPLETION UNTIL ALL INTERESTS HAVE BEEN CONSOLIDATED
OR A NON-STANDARD UNIT HAS BEEN APPROVED BY THE DIVISION



17 OPERATOR CERTIFICATION

I hereby certify that the information
contained herein is true and complete to the
best of my knowledge and belief

Signature

J. Denise Leake

Printed Name

J. Denise Leake

Position

Engineering Assistant

Date

1-26 '01

18 SURVEYOR CERTIFICATION

I hereby certify that the well location shown
on this plat was plotted from field notes of
actual surveys made by me or under my
supervision, and that the same is true and
correct to the best of my knowledge and
belief.

Date Surveyed

Signature & Seal of

Professional Surveyor

Certificate No.