

SUBMIT IN TRIPLICATE

UNIT
DEPARTMENT
BUREAU OF LAND

OPER. OGRID NO. 22351
PROPERTY NO. 10944
POOL CODE 35280
EFF. DATE 7/3/97
API NO. 30-025-34054

MISSION

NO 88240

FORM APPROVED

Budget Bureau No. 1004-0136
Expires: December 31, 1991

5. Lease Designation and Serial No.
NM 14218

6. If Indian, Alottee or Tribe Name

7. If Unit or CA, Agreement Designation

8. Well Name and Number
C. C. FRISTOE 'B' FEDERAL NCT-2

22
9. API Well No.

10. Field and Pool, Exploratory Area
JUSTIS BLINEBRY / JUSTIS TUBB DRINKARD

11. SEC., T., R., M., or BLK. and Survey or Area
Sec. 26, Township 24-S, Range 37-E

12. County or Parish
LEA

13. State
NM

17. No. of Acres Assigned To This Well
40

20. Rotary or Cable Tools
ROTARY

22. Approx. Date Work Will Start
6/20/97

APPLICATION FOR PERMIT TO DRILL OR DEEPEN

1a. Type of Work **DRILL** ☒ **DEEPEN** ☐
1b. Type of Well **OIL** ☒ **GAS** ☐ **OTHER** ☐
SINGLE ZONE ☒
MULTIPLE ZONE ☐

2. Name of Operator
TEXACO EXPLORATION & PRODUCTION INC.

3. Address and Telephone No.
P.O. Box 3109, Midland Texas 79702 688-4606

4. Location of Well (Report location clearly and in accordance with any State requirements.)*
At Surface
Unit Letter J : 1575 Feet From The SOUTH Line and 2200 Feet From The EAST Line
At proposed prod. zone
SAME

14. Distance in Miles and Direction from Nearest Town or Post Office*
6.15 MILES NE OF JAL, NM

15. Distance From Proposed* Location to Nearest Property or Lease Line, Ft. (also to nearest drlg. unit line, if any) 440'

18. Distance From Proposed Location* to Nearest Well, Drilling, Completed or Applied For, On This Lease, Ft. 806'

21. Elevations (Show whether DF, RT, GR, etc.)
GR-3180'

23. PROPOSED CASING AND CEMENT PROGRAM				
SIZE OF HOLE	GRADE, SIZE OF CASING	WEIGHT PER FOOT	SETTING DEPTH	QUANTITY OF CEMENT
*11	WC50. 8 5/8	24#	925'	525 SACKS - CIRCUMFERENCE
7 7/8	L80/K55, 4 1/2	11.6#	6400'	1400 SACKS - TOC @ 1800'

CEMENTING PROGRAM:

SURFACE CASING: 325 SACKS CLASS C w/ 4% GEL, 2% CC (13.5 PPG, 1.74 CF/S, 9.1 GW/S). F/B 200 SACKS CLASS C w/ 2% CC (14.8 PPG, 1.34 CF/S, 6.3 GW/S).

PRODUCTION CASING: 700 SACKS 35/65 POZ H w/ 6% GEL, 5% SALT, 1/4# FC (12.4 PPG, 2.14 CF/S, 11.9 GW/S). F/B 700 SACKS 50/50 POZ H w/ 2% GEL, 5% SALT, 1/4# FC (14.2 PPG, 1.35 CF/S, 6.3 GW/S).

*VERBAL APPROVAL FOR OCD IN HOBBS TO SET 8 5/8 SURFACE CASING IN AN 11" HOLE FOR WELLS IN THIS LEASE.

12 DAYS TO DRILL, 10 DAYS TO COMPLETE.

THERE ARE NO OTHER OPERATORS IN THIS QUARTER QUARTER SECTION.

UNORTHODOX LOCATION: APPLICATION HAS BEEN FILED. (COPY ATTACHED.)

**SUBJECT TO
LIKE APPROVAL
BY STATE
FOR UNORTHODOX
LOCATION**

**APPROVAL SUBJECT TO
GENERAL REQUIREMENTS AND
SPECIAL STIPULATIONS
ATTACHED**

In Above Space Describe Proposed Program: If proposal is to deepen, give data on present productive zone and proposed new productive zone. If proposal is to drill or deepen directionally, give pertinent data on subsurface locations and measured true verticle depths. Give blowout preventer program, if any.

24. I hereby certify that the foregoing is true and correct

SIGNATURE C. Wade Howard TITLE Eng. Assistant DATE 5/6/97

TYPE OR PRINT NAME C. Wade Howard

(This space for Federal or State office use)

PERMIT NO. _____ APPROVAL DATE _____

Application approval does not warrant or certify that the applicant holds legal or equitable title to those rights in the subject lease which would entitle the applicant to conduct operations thereon.

APPROVED BY (ORIG. SGD.) JAMES G. PETTENGILL TITLE Acting ADM, MINERALS DATE 6-4-97

CONDITIONS OF APPROVAL, IF ANY:

Title 18 U.S.C. Section 1001, makes it a crime for any person knowingly and willfully to make to any department or agency of the United States any false, fictitious or fraudulent statements or representations as to any matter within its jurisdiction.

DISTRICT I
P. O. Box 1980, Hobbs, NM 88240

DISTRICT II
P. O. Drawer DD, Artesia, NM 88210

DISTRICT III
1000 Rio Brazos Rd., Aztec, NM 87410

DISTRICT IV
P. O. Box 2088, Santa Fe, NM 87504-2088

State of New Mexico
Energy, Minerals and Natural Resources Department

OIL CONSERVATION DIVISION

PO Box 2088
Santa Fe, NM 87504-2088

Form C-102
Revised February 10, 1994

Instructions on back

Submit to Appropriate District Office

State Lease-4 copies
Fee Lease-3 copies

☐ AMENDED REPORT

WELL LOCATION AND ACREAGE DEDICATION PLAT

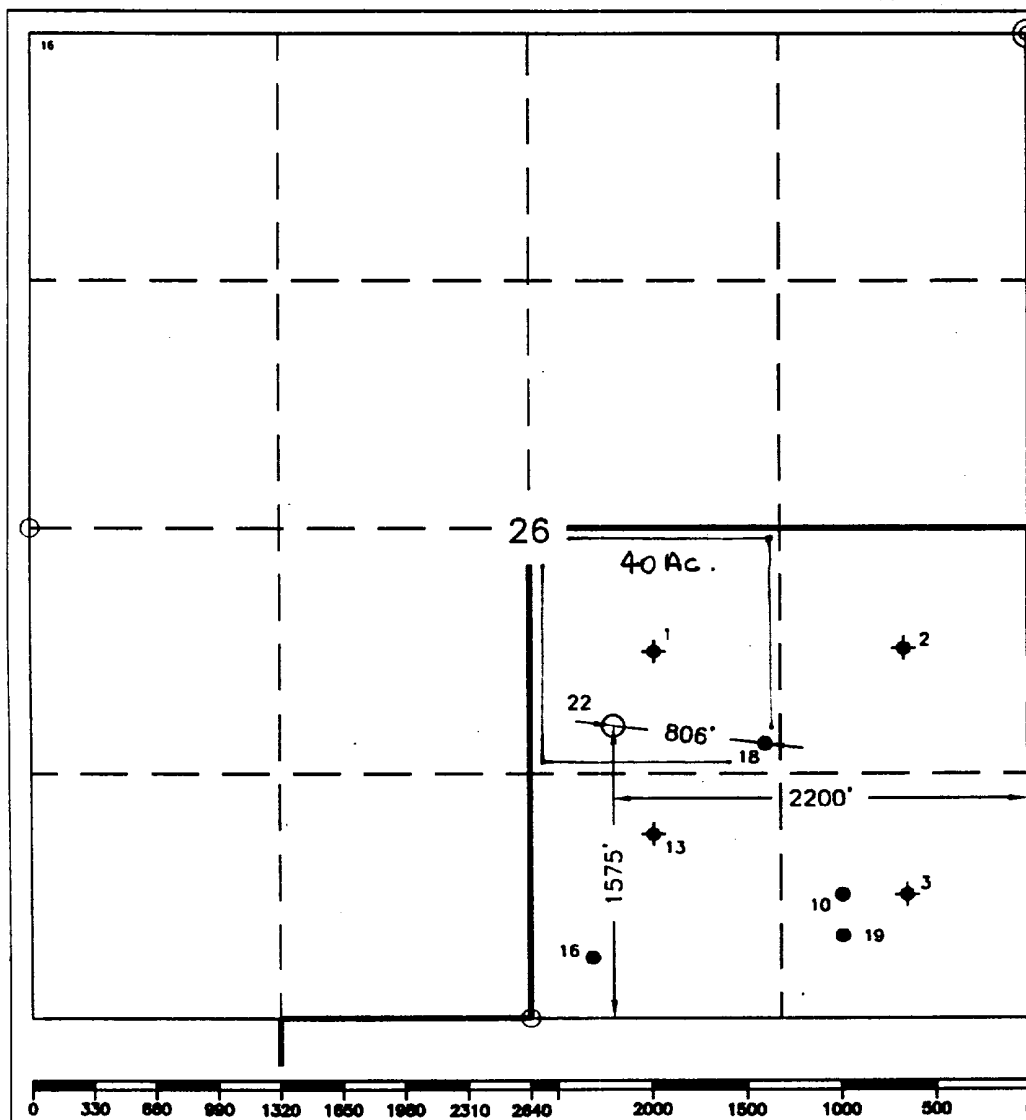
¹ API Number 30-025-34DS4		² Pool Code 35280		³ Pool Name 34200 Justis Blinebry; Justis Tubb Drinkard	
⁴ Property Code 10944		⁵ Property Name C. C. Fristoe "B" Federal NCT-2			⁶ Well Number 22
⁷ OGRID No. 22351		⁸ Operator Name TEXACO EXPLORATION & PRODUCTION, INC.			⁹ Elevation 3180'

¹⁰ Surface Location									
UL or lot no. J	Section 26	Township 24-S	Range 37-E	Lot Idn	Feet from the 1575'	North/South line South	Feet from the 2200'	East/West line East	⁷ County Lea

¹¹ Bottom Hole Location If Different From Surface									
UL or lot no.	Section	Township	Range	Lot Idn	Feet from the	North/South line	Feet from the	East/West line	⁷ County

¹² Dedicated Acres 40	¹³ Joint or Infill	¹⁴ Consolidation Code	¹⁵ Order No.
--	-------------------------------	----------------------------------	-------------------------

NO ALLOWABLE WILL BE ASSIGNED TO THIS COMPLETION UNTIL ALL INTERESTS HAVE BEEN CONSOLIDATED
OR A NON-STANDARD UNIT HAS BEEN APPROVED BY THE DIVISION.



¹⁶ OPERATOR CERTIFICATION I hereby certify that the information contained herein is true and complete to the best of my knowledge and belief.	
Signature <i>C. Wade Howard</i>	Printed Name C. Wade Howard
Position Engineer's Assistant	
Company Texaco Expl. & Prod. Inc.	
Date May 5, 1997	
¹⁷ SURVEYOR CERTIFICATION I hereby certify that the well location shown on this plat was plotted from field notes of actual surveys made by me or under my supervision, and that the same is true and correct to the best of my knowledge and belief.	
Date Surveyed April 24, 1997	
Signature & Seal of Professional Surveyor <i>John S. Piper</i>	
Certificate No. 7254 John S. Piper	
Sheet 8 of 8	

DRILLING PROGRAM

C. C. FRISTOE 'B' FEDERAL NCT-2 WELL No. 22

SURFACE DESCRIPTION:

See Item 11 (other information) in the attached Surface Use and Operations Plan.

FORMATION TOPS: Estimated KB Elevation: 3194'

<u>Formation</u>	<u>Depth</u>	<u>Lithology</u>	<u>Fluid Content</u>
Rustler	925'	Anhy, Salt	----
Tansill	2270'	Anhy, Dolo	----
Yates	2385'	Sandstone, Anhy	----
Queen	3090'	Sandstone, Anhy	----
Blinebry	5115'	Dolomite, Anhy	Oil
Tubb	5800'	Sandstone	Oil
Drinkard	6010'	Dolomite, Anhy	Oil
Abo	6250'	Dolo, Limestone	Oil

The base of the salt section is the top of the Tansill at 2270'. No abnormal pressures or temperatures are anticipated to be encountered in this well. H₂S is present in the Blinebry. H₂S RADIUS OF EXPOSURE: 100ppm = 26', 500ppm = 12', based on 300ppm H₂S and 380 MCF (see attached H₂S Drilling Operations Plan. H₂S equipment to be operational prior to drilling out Surface Casing Shoe.)

Duration of Operation: 12 Days to Drill & 10 Days to Complete

PRESSURE CONTROL EQUIPMENT:

A 3000 psi Dual Ram type preventer with rotating head will be used. (See Exhibit C). We do not plan to have an annular preventer. We will be able to achieve full closure of the well with the double ram preventer. It will be installed after surface casing is set. BOP will be tested each time it is installed on a casing string and at least every 29 days, and operated at least once each 24-hour period during drilling.

A PVT system will not be installed. We will be drilling thru the reserve pit and will circulate the steel pits one hour each tour to check for gains and losses and will be noted on the driller's log, which is Texaco's policy.

We do not plan to run an automatic remote-controlled choke. We will have installed and tested two manual, H₂S trimmed, chokes.

CASING AND CEMENT PROGRAM:

The cementing program is detailed on Form 3160-3. All casing will be new.

Casing Program:

Surface Casing - 8 5/8", 24#, WC50, STC set at 925'.

Production Casing - 0' to 2000': 4 1/2", 11.6#, L-80, LTC
2000' to 6400': 4 1/2", 11.6#, K-55, LTC.

Centralizer Program:

Surface Casing - Centralize the bottom 3 joints and every 4th to surface.

Production Casing - Centralize every 3rd joint on bottom 2000'.

MUD PROGRAM:

<u>Depth</u>	<u>Type</u>	<u>Weight</u>	<u>Viscosity</u>
0'-925'	Fresh Water	8.4	28
925'-4000'	Brine	10.0	29
4000'-6400'	Brine/Starch	10.0	32-36

Bottom Hole Pressure at T.D. estimated to be 6.7 PPG EMW (2230 psi).

LOGGING, TESTING:

GR-CNL-LDT, GR-DLL-MSFL, and GR-Sonic surveys will be run.

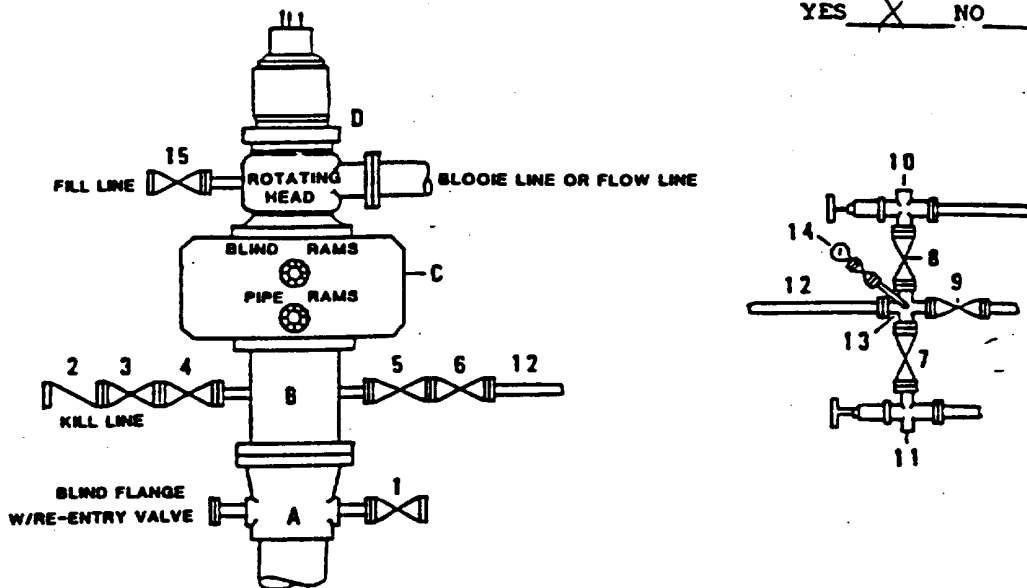
No Mud Logging Unit will be used.

No drill stem tests will be conducted.

No cores will be taken.

**DRILLING CONTROL
CONDITION II-B 3000 WP
FOR AIR DRILLING OR
WHERE NITROGEN OR AIR BLOWS ARE EXPECTED**

H₂S TRIM REQUIRED
YES ☒ NO ☐



DRILLING CONTROL

MATERIAL LIST - CONDITION II - B

- A Texaco Wellhead
- B 3000# W.P. drilling spool with a 2" minimum flanged outlet for kill line and 3" minimum flanged outlet for choke line.
- C 3000# W.P. Dual ram type preventer, hydraulic operated with 1" steel, 3000# W.P. control lines (where sub-structure height is adequate, 2 - 3000# W.P. single ram type preventers may be utilized).
- D Rotating Head with fill up outlet and extended Slooie Line.
- 1,3,4, 7,8, 2" minimum 3000# W.P. flanged full opening steel gate valve, or Halliburton Lo Torc Plug valve.
- 2 2" minimum 3000# W.P. back pressure valve.
- 5,6,9 3" minimum 3000# W.P. flanged full opening steel gate valve, or Halliburton Lo Torc Plug valve.
- 12 3" minimum schedule 80, Grade "B", seamless line pipe.
- 13 2" minimum x 3" minimum 3000# W.P. flanged cross.
- 10,11 2" minimum 3000# W.P. adjustable choke bodies.
- 14 Cameron Mud Gauge or equivalent (location optional in choke line).
- 15 2" minimum 3000# W.P. flanged or threaded full opening steel gate valve, or Halliburton Lo Torc Plug valve.

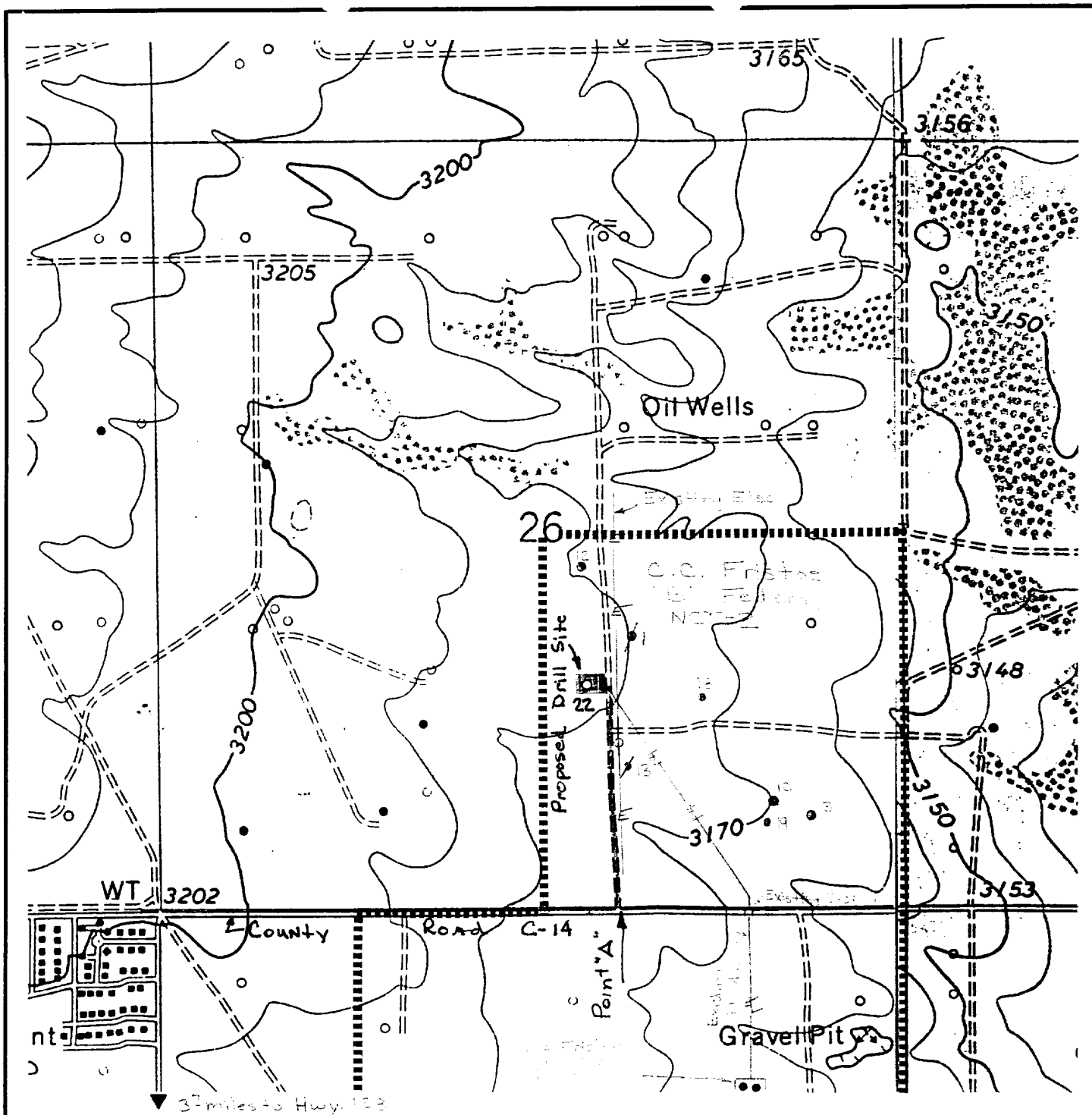


TEXACO, INC.
MIDLAND DIVISION
MIDLAND, TEXAS



SCALE	DATE	EST NO	DRG NO
DRAWN BY			
CHECKED BY			
APPROVED BY			

EXHIBIT C



LEGEND OF SYMBOLS

- = Access Road (Yellow)
- = Resource Road Federal Land (Pink)
- = Resource Road on Lease (Brown)
- = Proposed Resource Road (Red)
- E-E- = Proposed Electric Line (Orange)
- FL-FL- = Proposed Production Flowline (Green)
- = Staked Well Location
- = Producing Well Location
- ◇ = Water Well
- = Found 1" Iron Pipe With Brass Cap
- ⊙ = Found 2" Iron Pipe With Brass Cap
- ■ ■ = Unit or Lease Boundary

EXHIBIT "A" ACCESS ROAD AND FACILITIES MAP

TEXACO EXPLORATION AND PRODUCTION

C. C. Fristoe "B" Federal NCT-2 No. 22
1575' FSL & 2200' FEL Section 26,
T-24-S, R-37-E, NMPM, Lea County, NM

Drawn by: Oscar Flores

Scale: 1" = 1000 Feet

Date: April 25, 1997

C. Wade Howard

Checked by: J. S. Piper

Sheet 6 of 8

ELF
12/27/82
ABOVE DATE DOES NOT
INDICATE WHEN
CONFIDENTIAL LOGS
WILL BE RELEASED